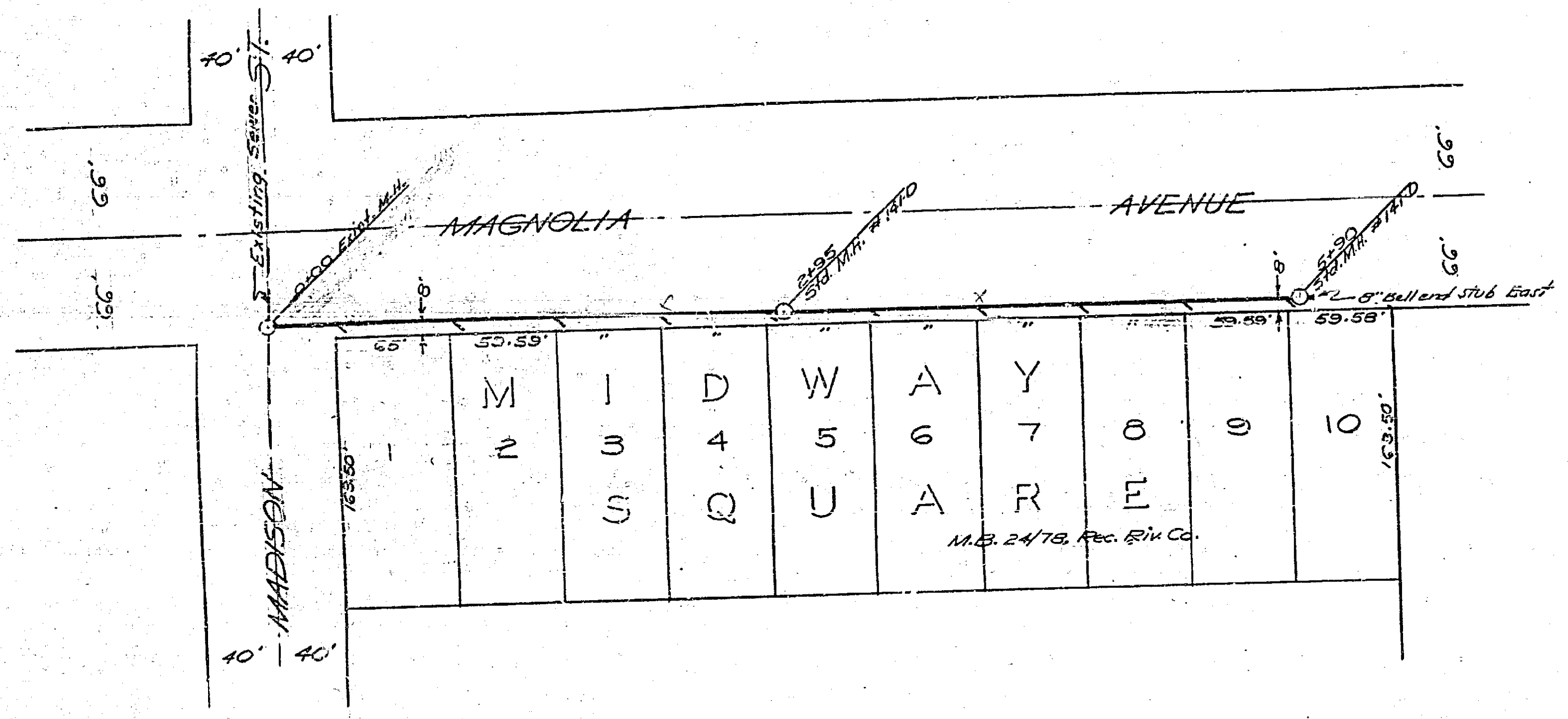


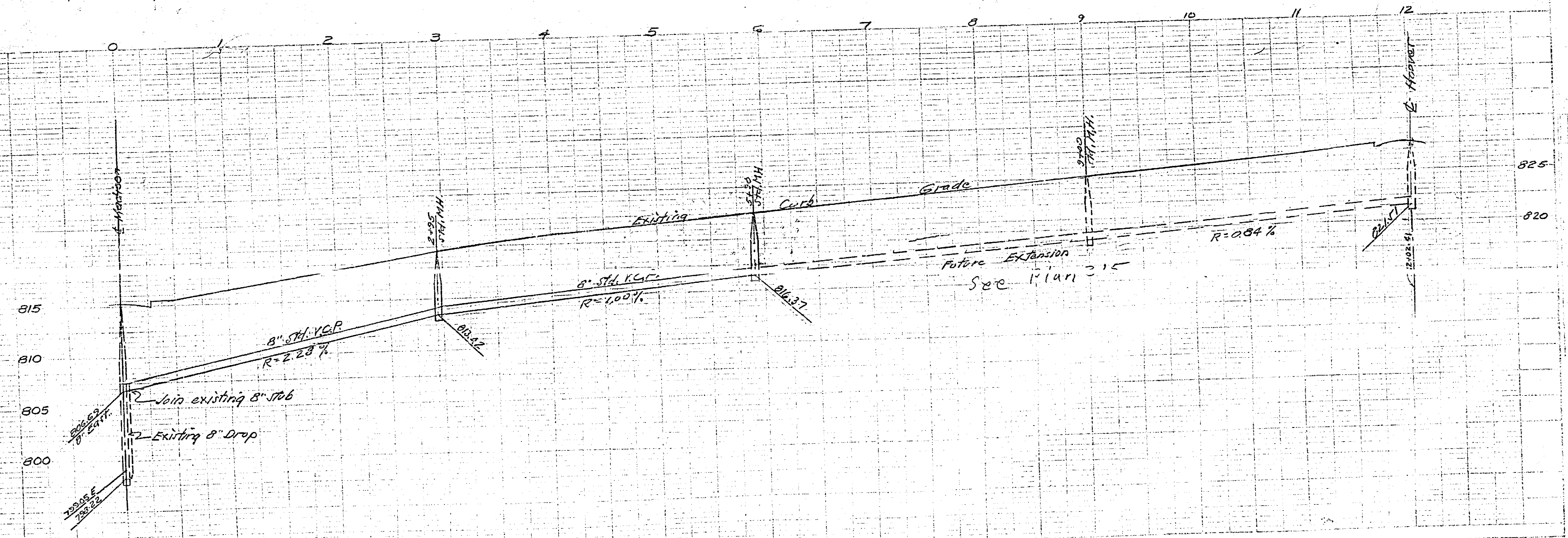
PLAN AND PROFILE
 NO. 500
 FOR THE CONSTRUCTION OF SANITARY
 SEWER IN
MAGNOLIA AVENUE
 FROM MADISON ST. TO 530' E'LY
 RIVERSIDE, CALIFORNIA



SCALES: HORIZ. 1" = 50'
 VERT. 1" = 5'

APPROVED: *M.H. Irvine*
 M.H. IRVINE, REG. C.E. # 5011
 CITY ENGINEER

F.B. 397-66



500