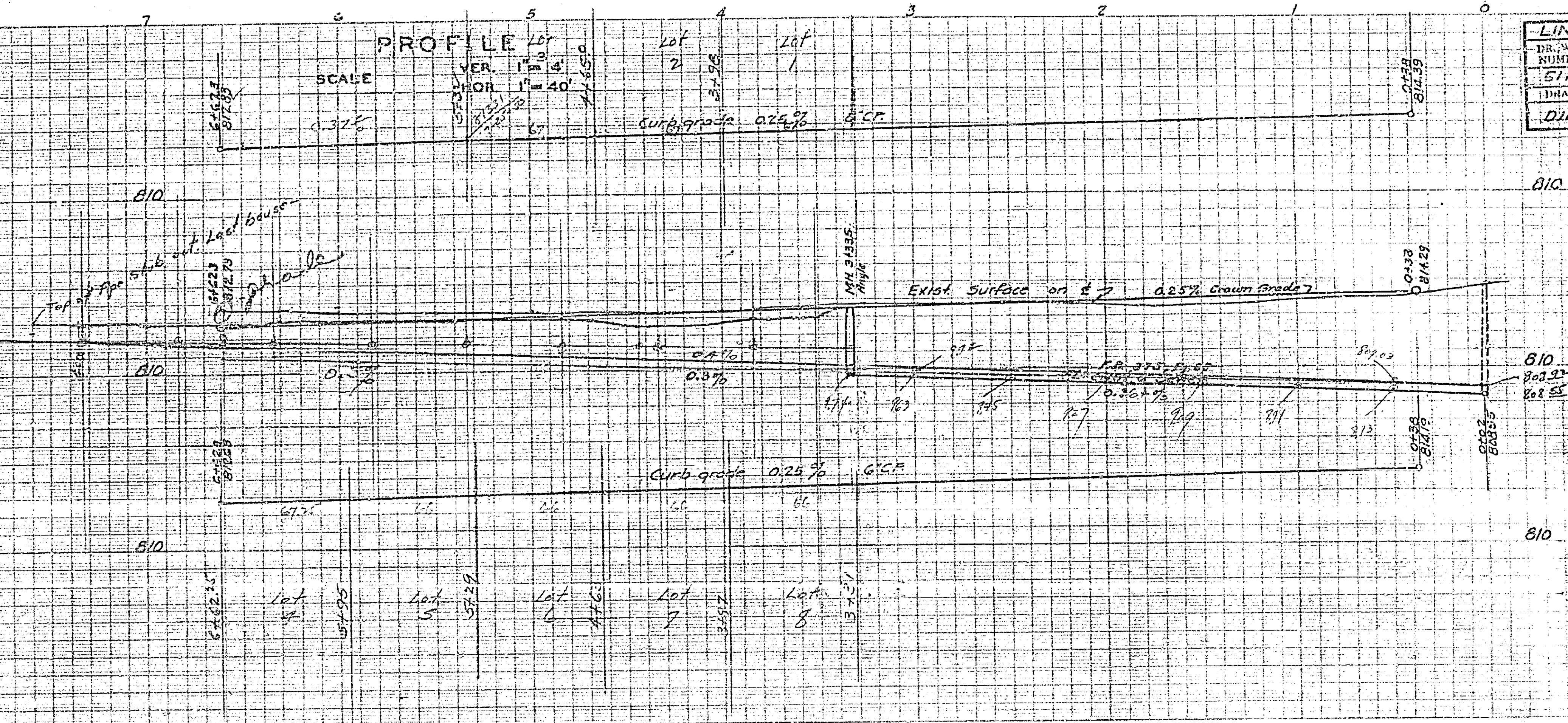


LINWOOD PL.-PALM AVE. WLY			
DR. W. NO.	SHEET NUMBER	TOTAL SHEETS	FIELD BOOK
511	1	1	336-39
DRAWN BY		CHECKED BY	APPROVED BY
D.M.			

PROFILE

SCALE 1" = 40'
 VER. 1" = 4'
 HOR. 1" = 40'

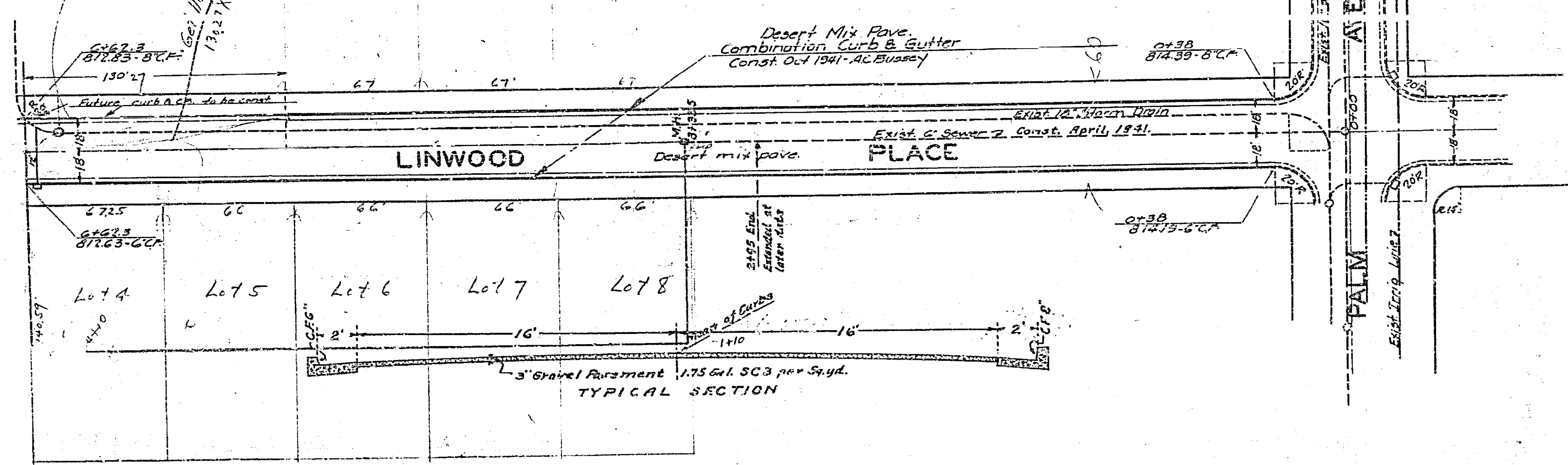
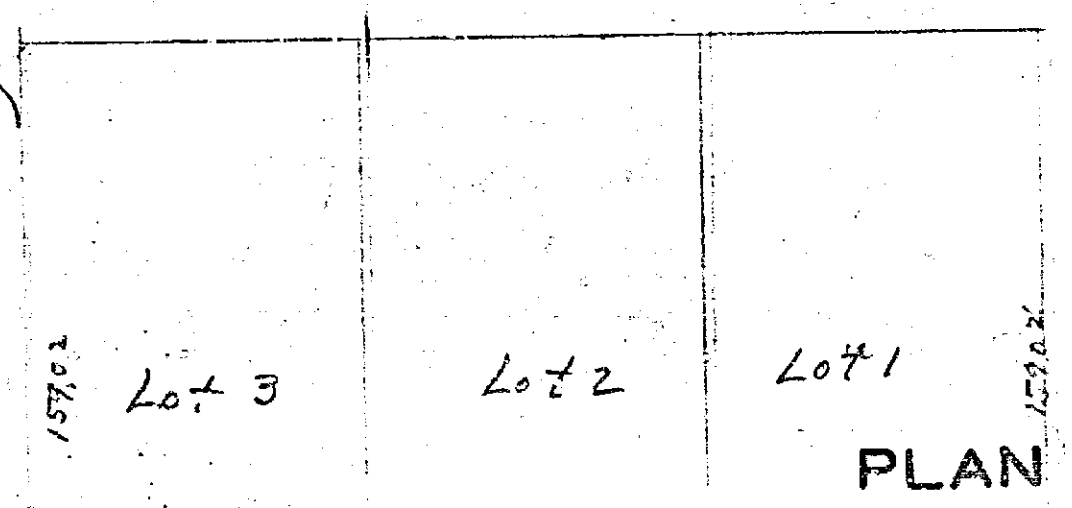


PLAN AND PROFILE
 OF THE PROPOSED IMPROVEMENT ON
LINWOOD PLACE
 WESTERLY FROM PALM AVE.

ENGINEERING DEPT. RIVERSIDE CALIF. 1941.
 CITY (U.S.G.S.) DATUM PLANE
 FIELD BOOK 368 PAGES 39-

APPROVED *E. M. ...*
 CITY ENGINEER.
 REG. ENG. 1312.

*See # 511-18 for C. & G.
 Gen. Used N 1/2 of B
 172.27 x 30' (Shady Acres N-2)*



APPROVED BY THE MAYOR
 AND CITY ENGINEER
 THIS PLAN OF ... 1941.

CITY OF RIVERSIDE, CALIF.

511