


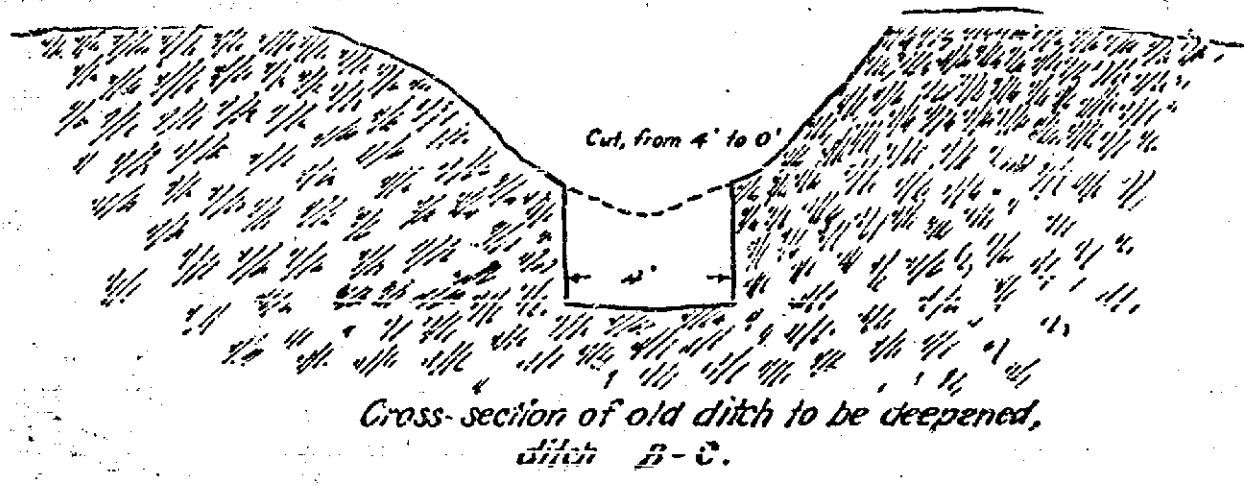
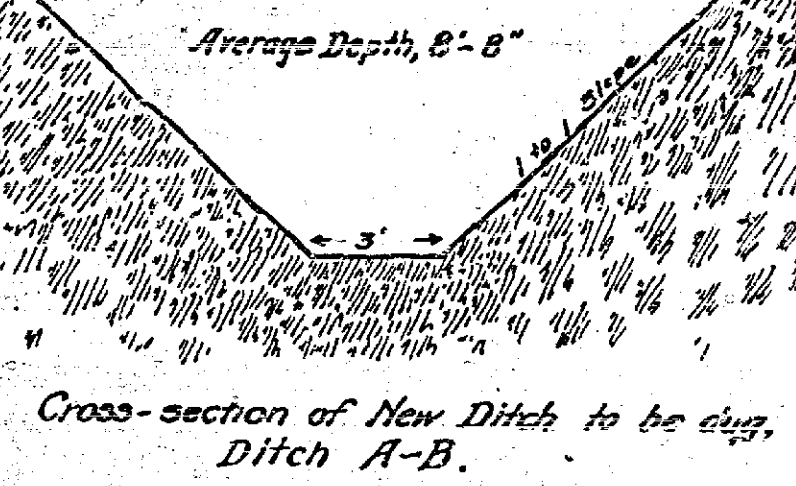
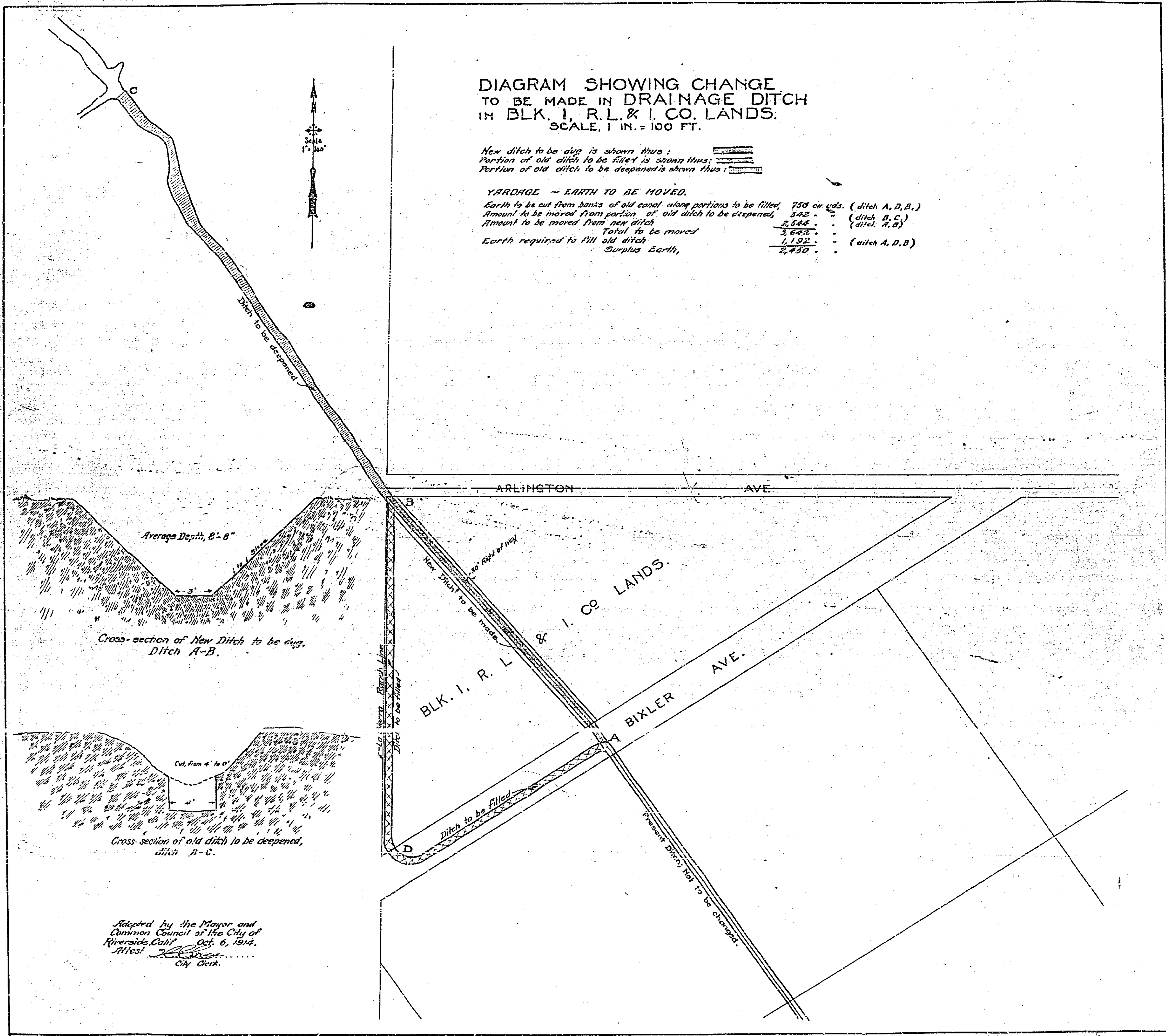


### DIAGRAM SHOWING CHANGE TO BE MADE IN DRAINAGE DITCH IN BLK. 1, R. L. & I. CO. LANDS. SCALE, 1 IN. = 100 FT.

New ditch to be dug is shown thus:   
Portion of old ditch to be filled is shown thus:   
Portion of old ditch to be deepened is shown thus: 

**YARDAGE - EARTH TO BE MOVED.**

Earth to be cut from banks of old canal along portions to be filled,	750 cu yds.	(ditch A, D, B.)
Amount to be moved from portion of old ditch to be deepened,	542 "	(ditch B, C.)
Amount to be moved from new ditch	3,544 "	(ditch A, B)
<b>Total to be moved</b>	<b>4,836 "</b>	
Earth required to fill old ditch	1,192 "	(ditch A, D, B)
<b>Surplus Earth,</b>	<b>3,644 "</b>	



Adopted by the Mayor and  
Common Council of the City of  
Riverside, Calif. Oct. 6, 1914.  
Attest: \_\_\_\_\_  
City Clerk.

522 A