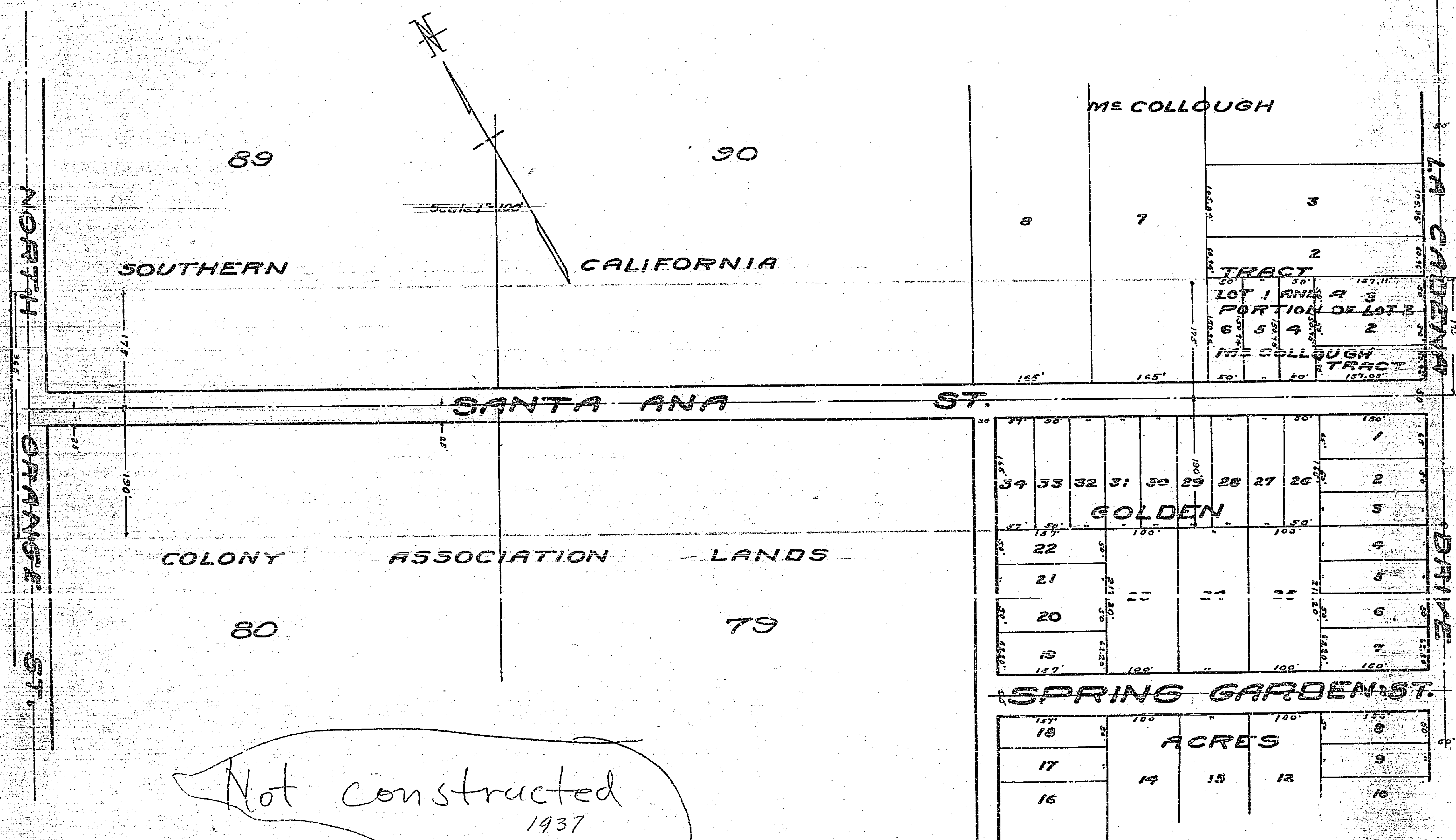


MAP OF PROPOSED OPENING AND WIDENING OF
SANTA ANA STREET
 BETWEEN LA CADENA DRIVE & NORTH ORANGE STREET
 A. P. CAMPBELL CITY ENGINEER 1927.



Not constructed
 1937

34	33	32	31	30	29	28	27	26	1
22	21	20	19	18	17	16	15	14	13
ACRES									
13	12	11	10	9	8	7	6	5	4

525

108