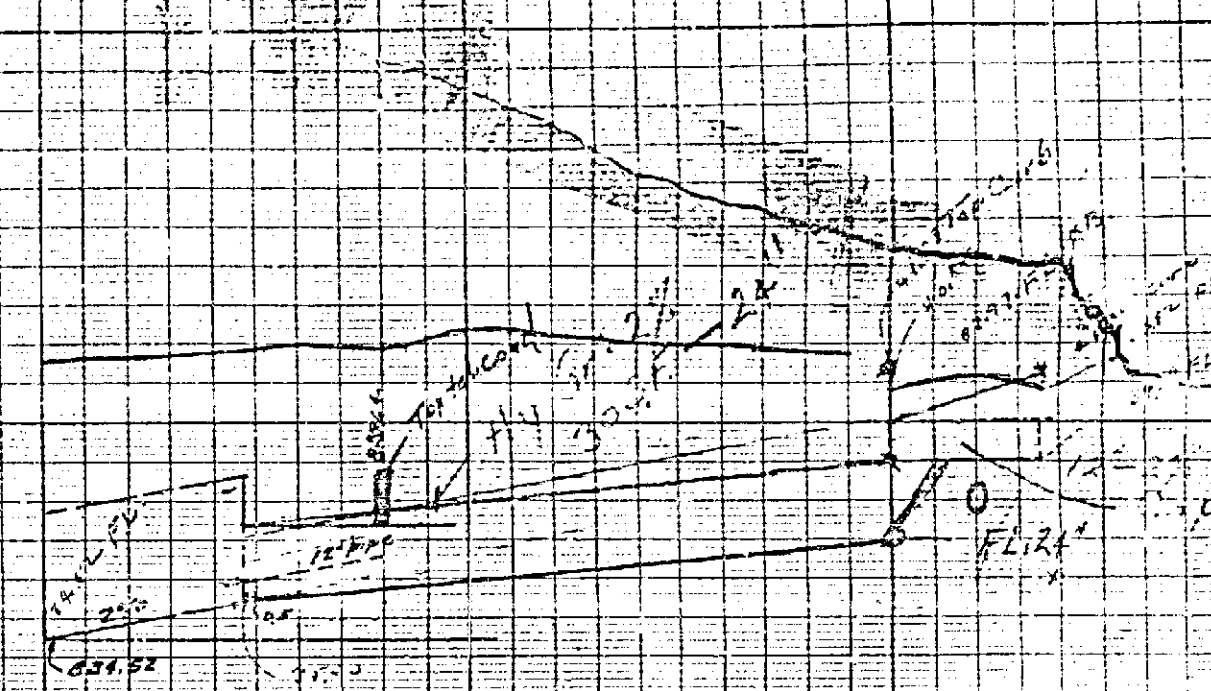
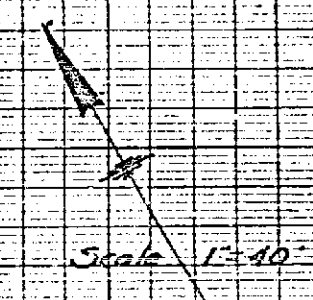


WYOMING ST. & SPRUCE INT.			
DATE	BY	CHECKED BY	APPROVED BY
1/10/51	J. H. ...	J. H. ...	J. H. ...
1/10/51	J. H. ...	J. H. ...	J. H. ...
1/10/51	J. H. ...	J. H. ...	J. H. ...



See
529 - A020
for Extension
to Fairmount Blvd



1/10/51 4' 20' 0.00
38' 6\"/>

1/10/51
1/10/51
1/10/51

Drainage Area
12' 0\"/>

SPRUCE ST
12' 0\"/>

135' 18\"/>

8' x 5'-0\"/>

530