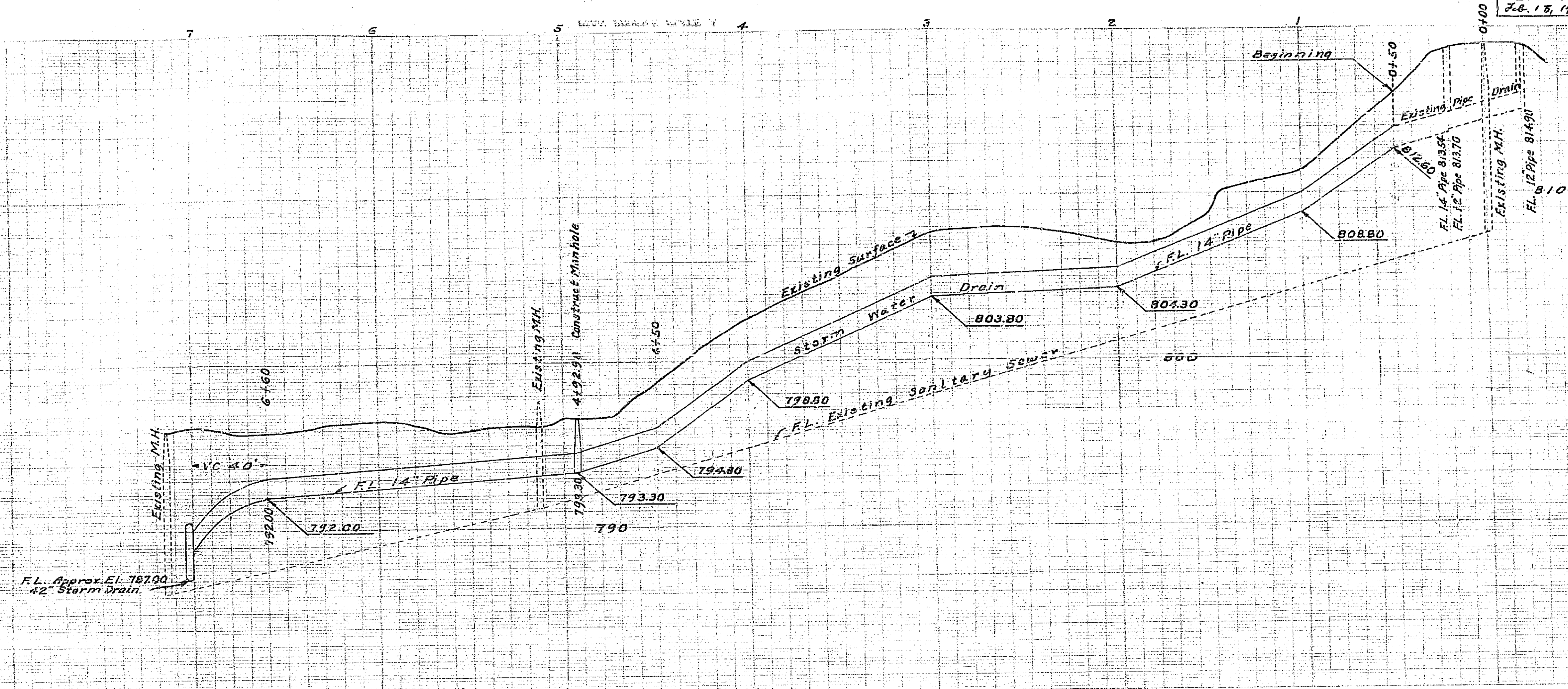


Drawing Number	Sheet Number	Total Sheets	Field Book
53	1	347	347
Drawn O. E. W. Feb. 18, 1939.	Approved M	Checked ANR	

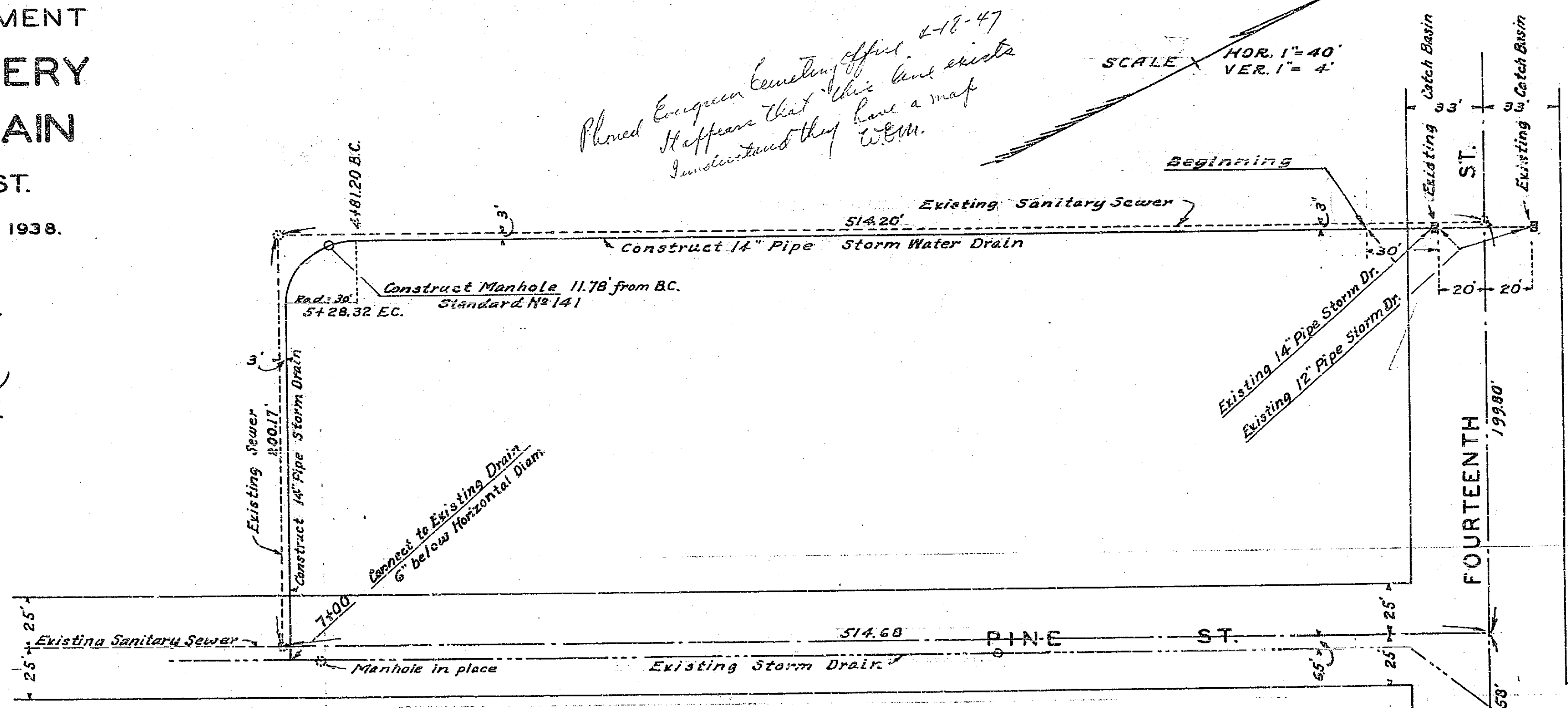


**PLAN AND PROFILE
OF THE PROPOSED IMPROVEMENT
EVERGREEN CEMETERY
STORM WATER DRAIN**
FOURTEENTH ST. - PINE ST.
ENGINEER DEPT. RIVERSIDE CALIF. 1938.
CITY (U.S.G.S.) DATUM PLANE
FIELD BOOK 347 PAGES 52 - 54

*Phoned Evergreen Cemetery office 2-18-47
It appears that this line exists
I understand they will.*

SCALE HOR. 1" = 40'
VER. 1" = 4'

APPROVED *[Signature]*
CITY ENGINEER.



APPROVED AND ADOPTED BY THE MAYOR
AND COUNCIL OF THE CITY OF RIVERSIDE
THIS DAY OF 1939.

CITY CLERK, CITY OF RIVERSIDE.

53-1