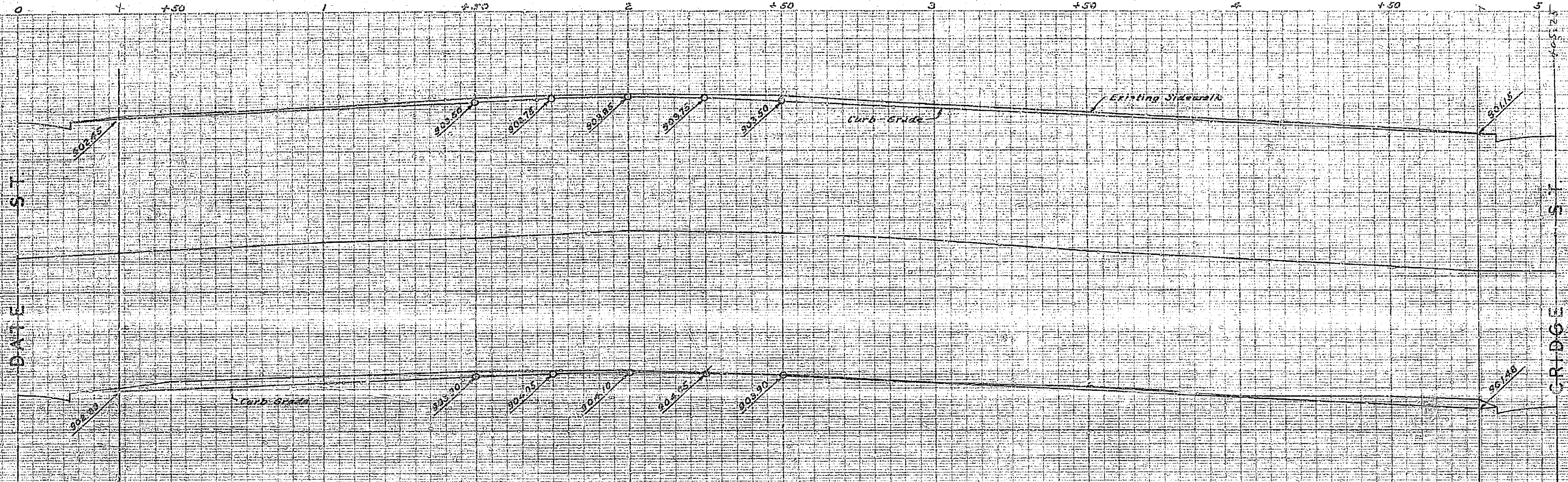


543



PLAN AND PROFILE
OF THE PROPOSED IMPROVEMENT ON
GROVE AVENUE
BETWEEN DATE ST. & CRIDGE ST.

ENGINEER DEPT. RIVERSIDE CALIF. 1936
CITY (U.S.G.S.) DATUM PLANE
FIELD BOOK 321 PAGES 35-41

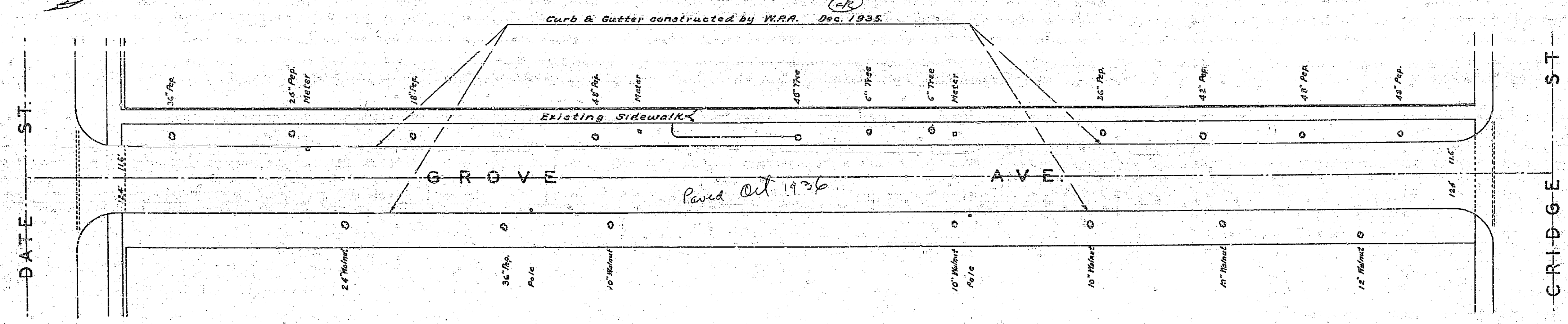
Constructed by Street Dept. ^{at 1936} 1937

APPROVED _____
CITY ENGINEER.

APPROVED AND ADOPTED BY THE MAYOR
AND COUNCIL OF THE CITY OF RIVERSIDE
THIS ____ DAY OF ____ 1936.

CITY CLERK, CITY OF RIVERSIDE.

SCALE
HOR. 1" = 20'
VER. 1" = 5'



543

543