

Ref No 260

DESIGNED FOR COOPER'S 'E-60' LOADING.

MUSHROOM SYSTEM
(TRADE MARK)
CONCRETE CONSTRUCTION

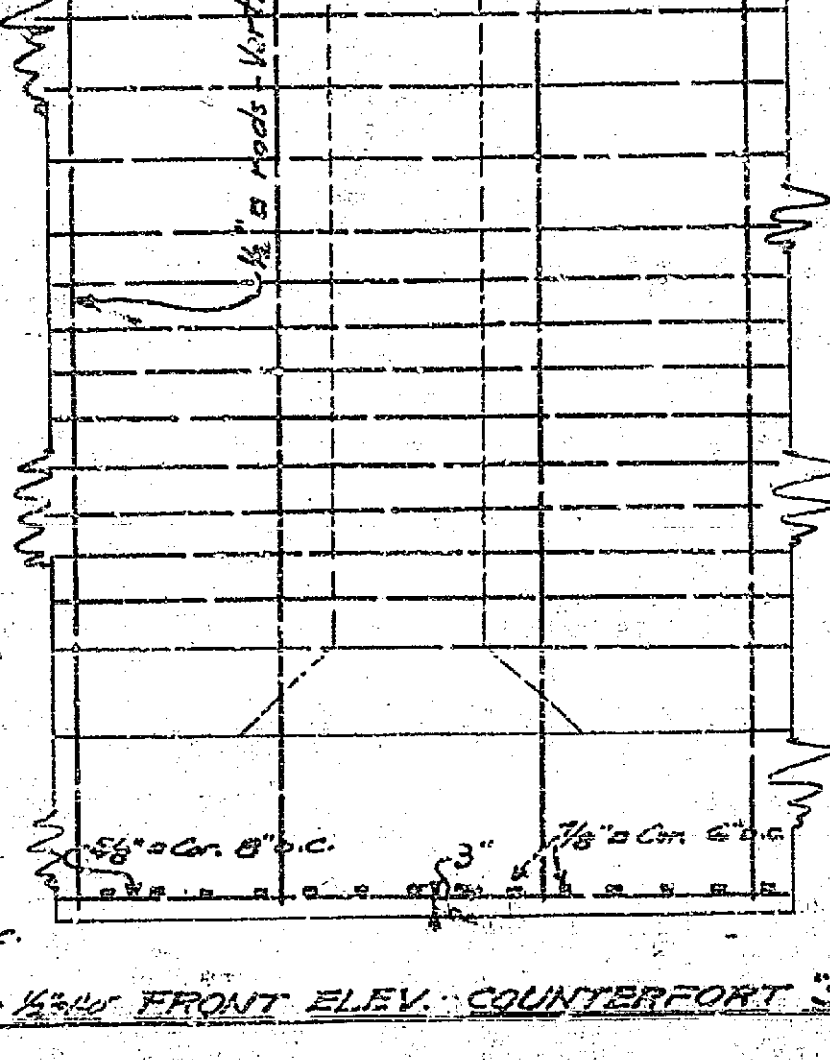
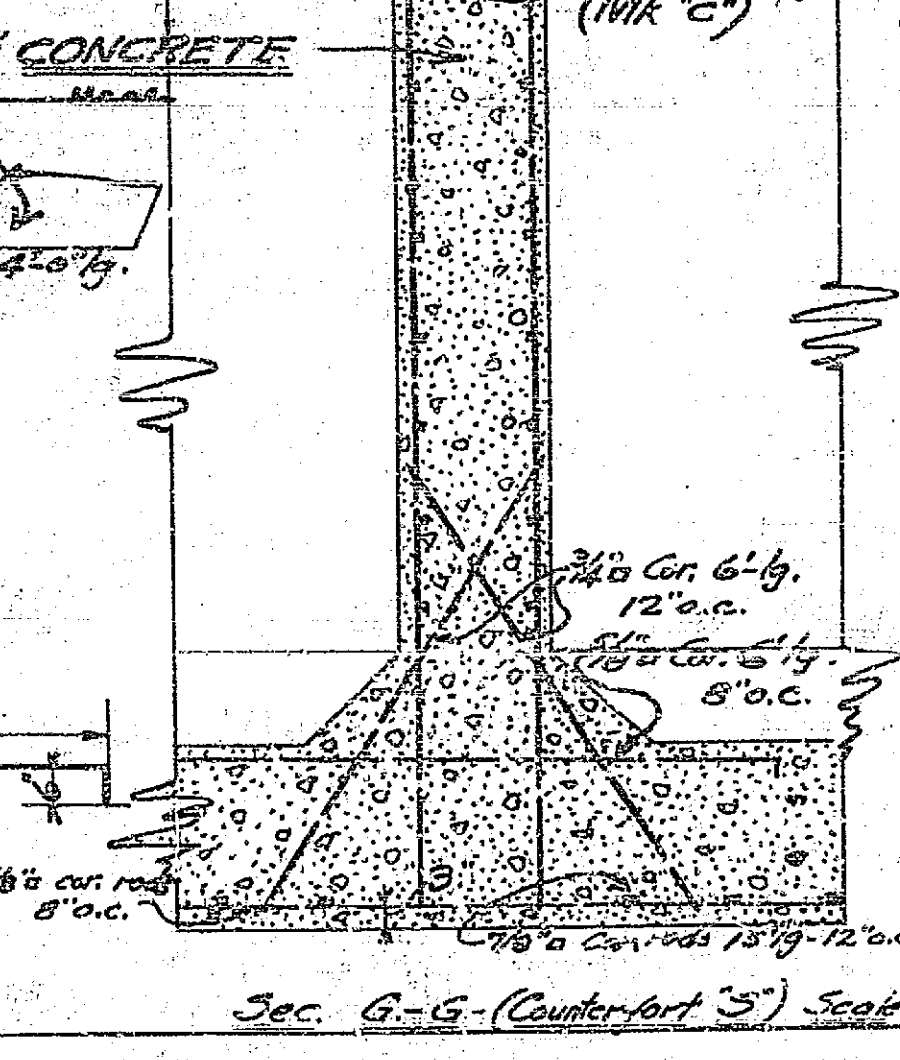
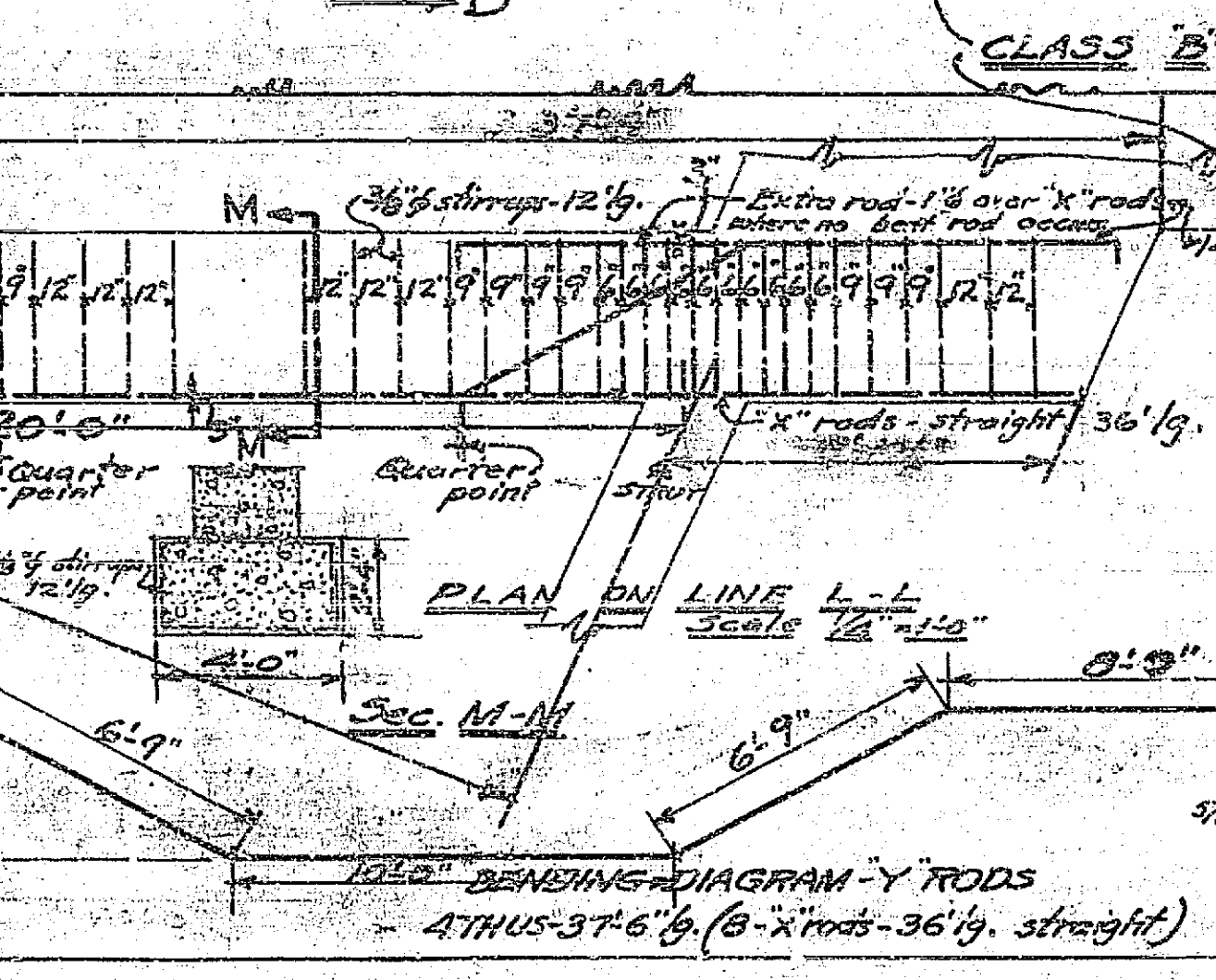
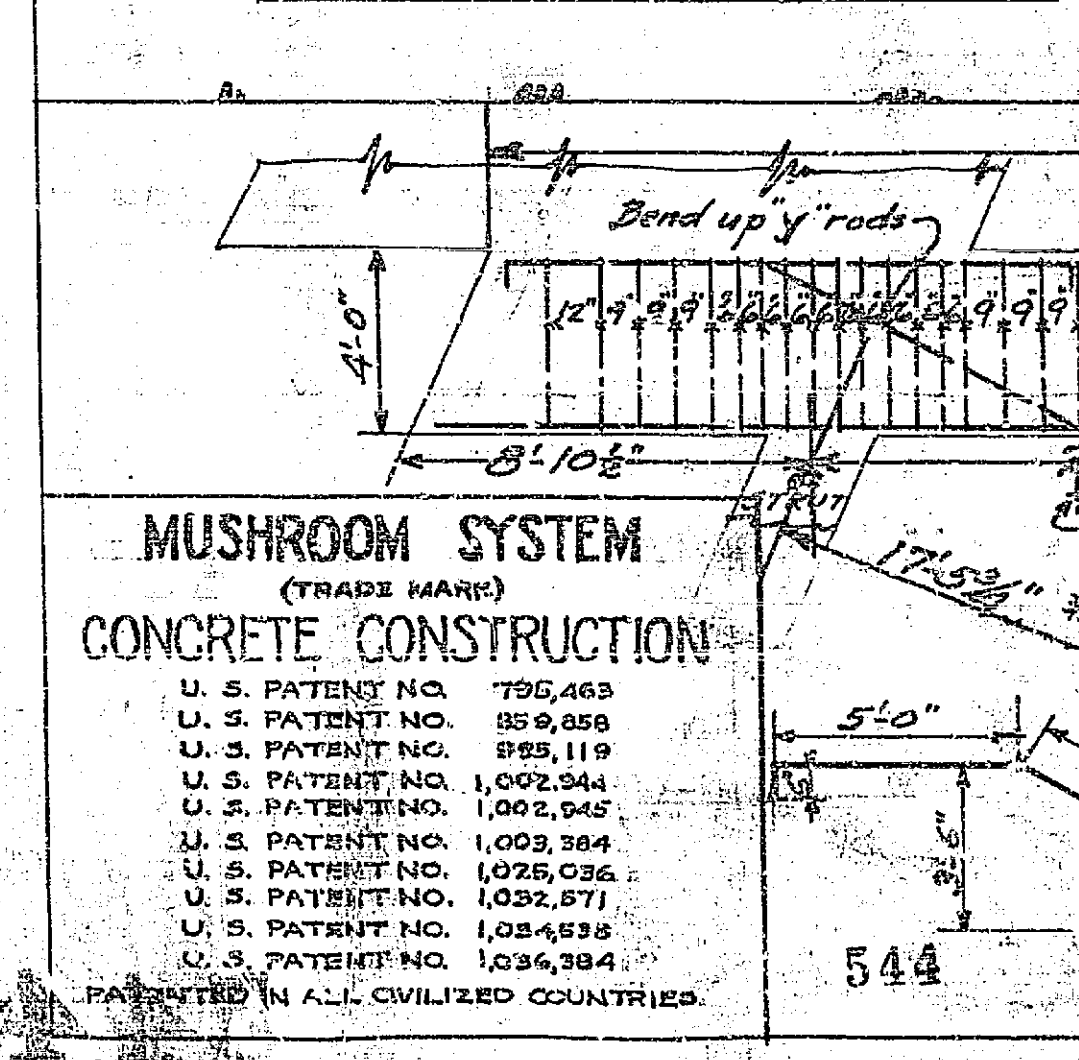
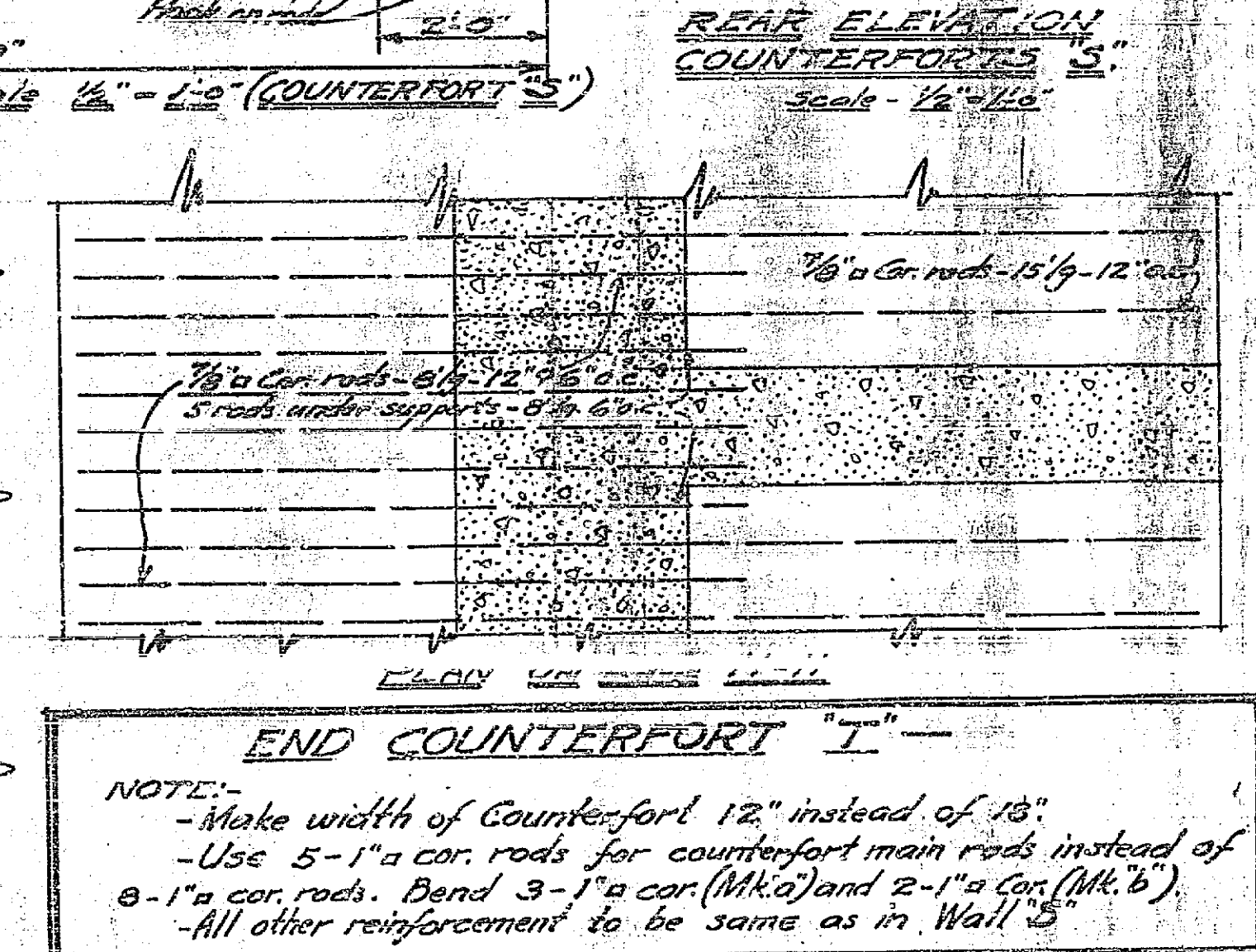
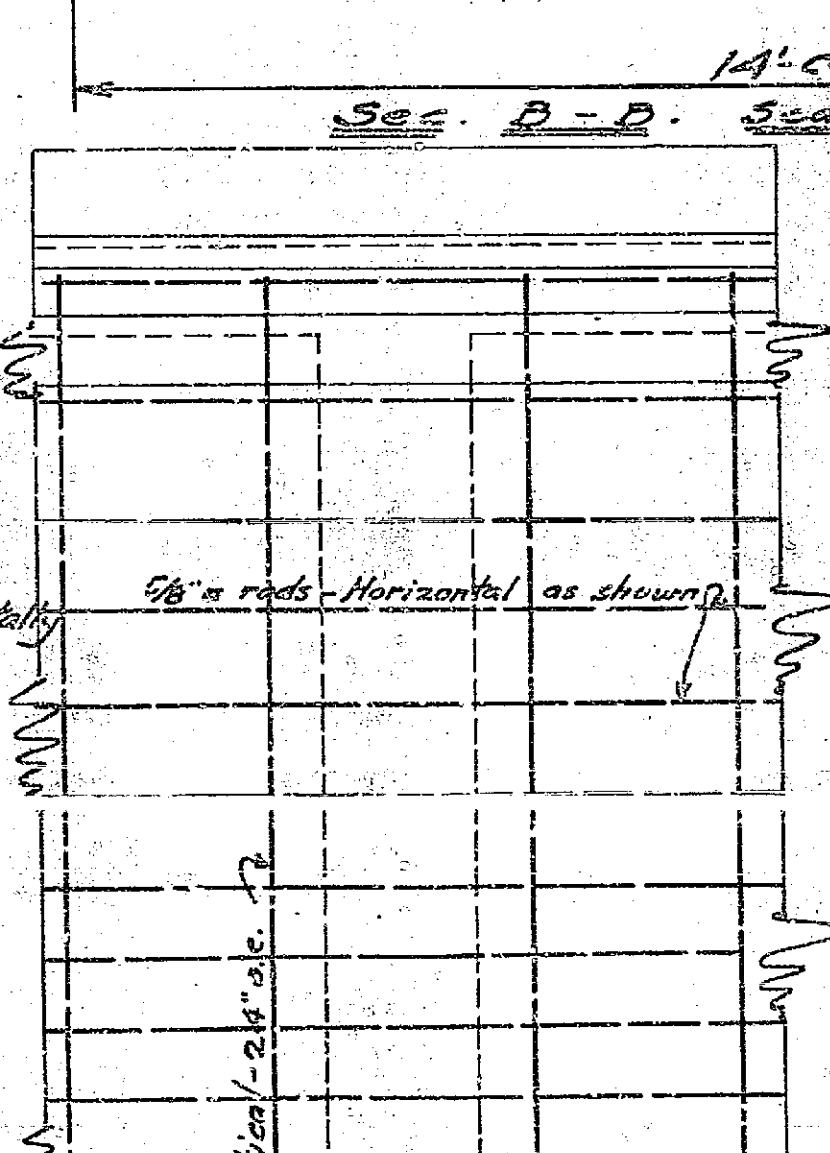
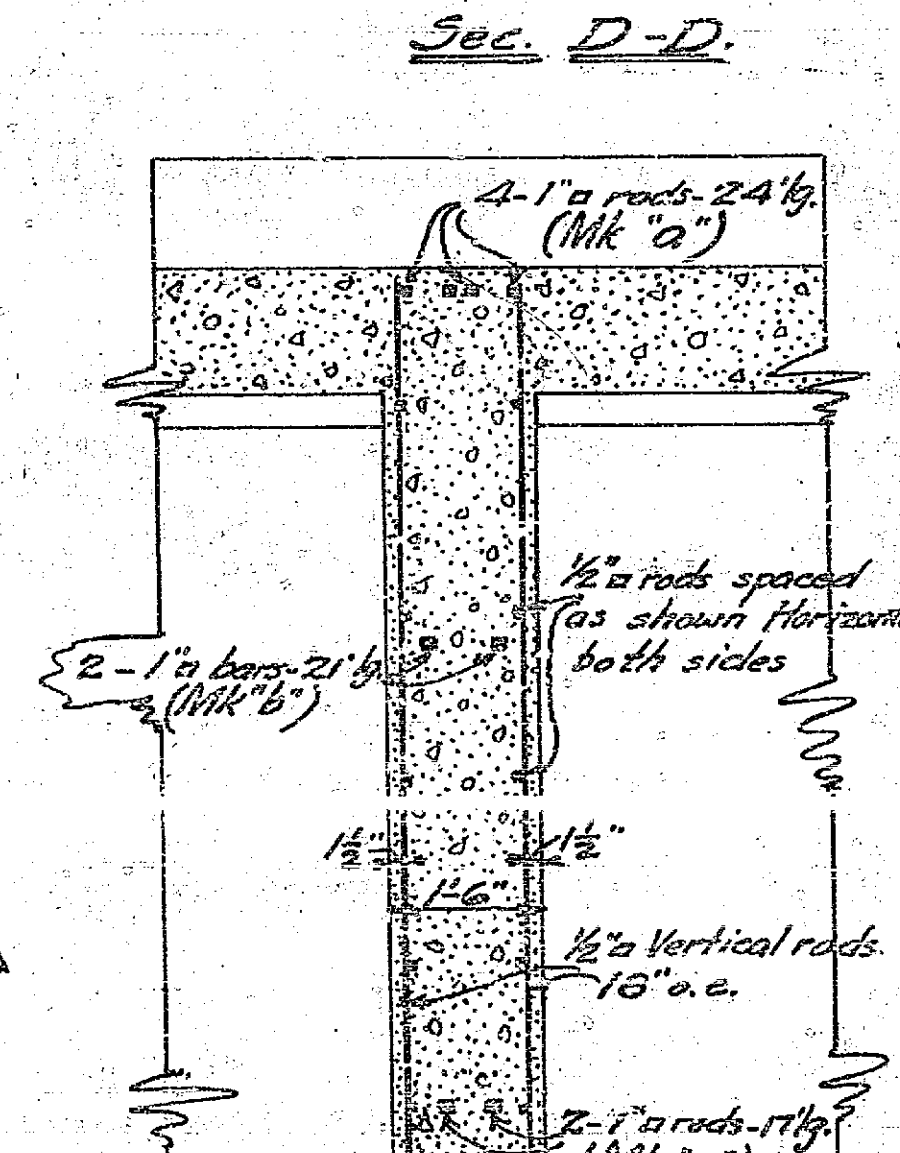
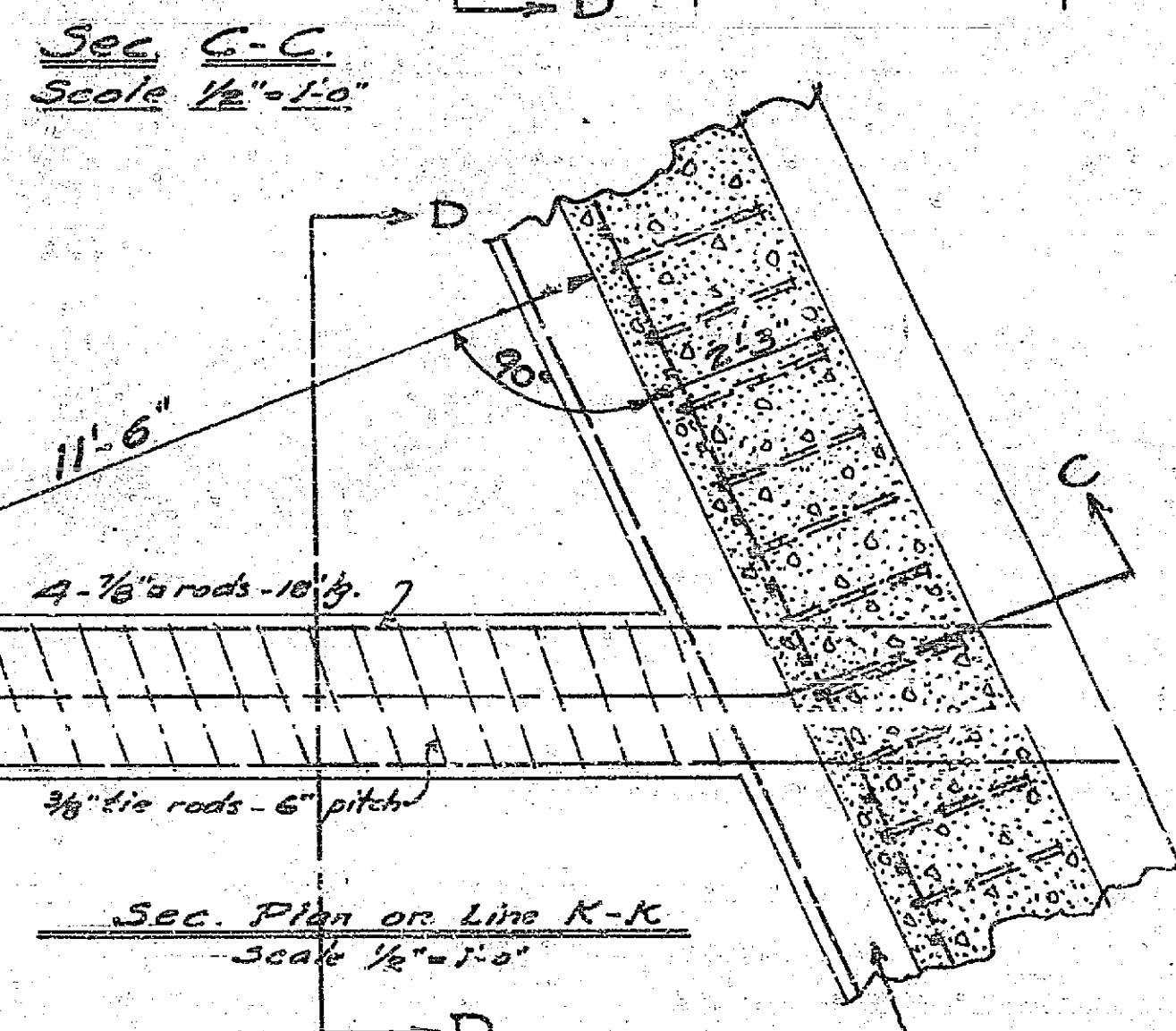
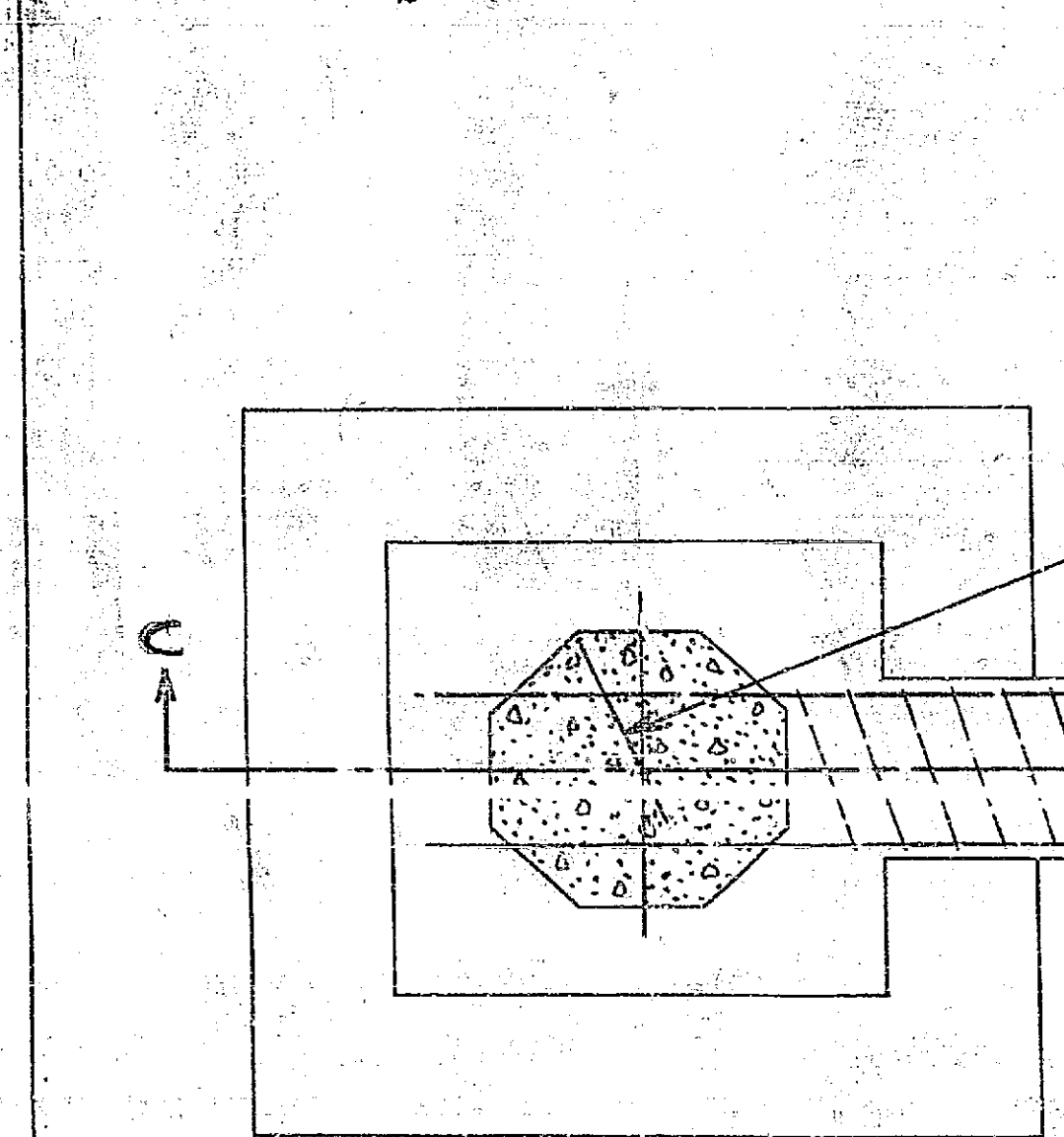
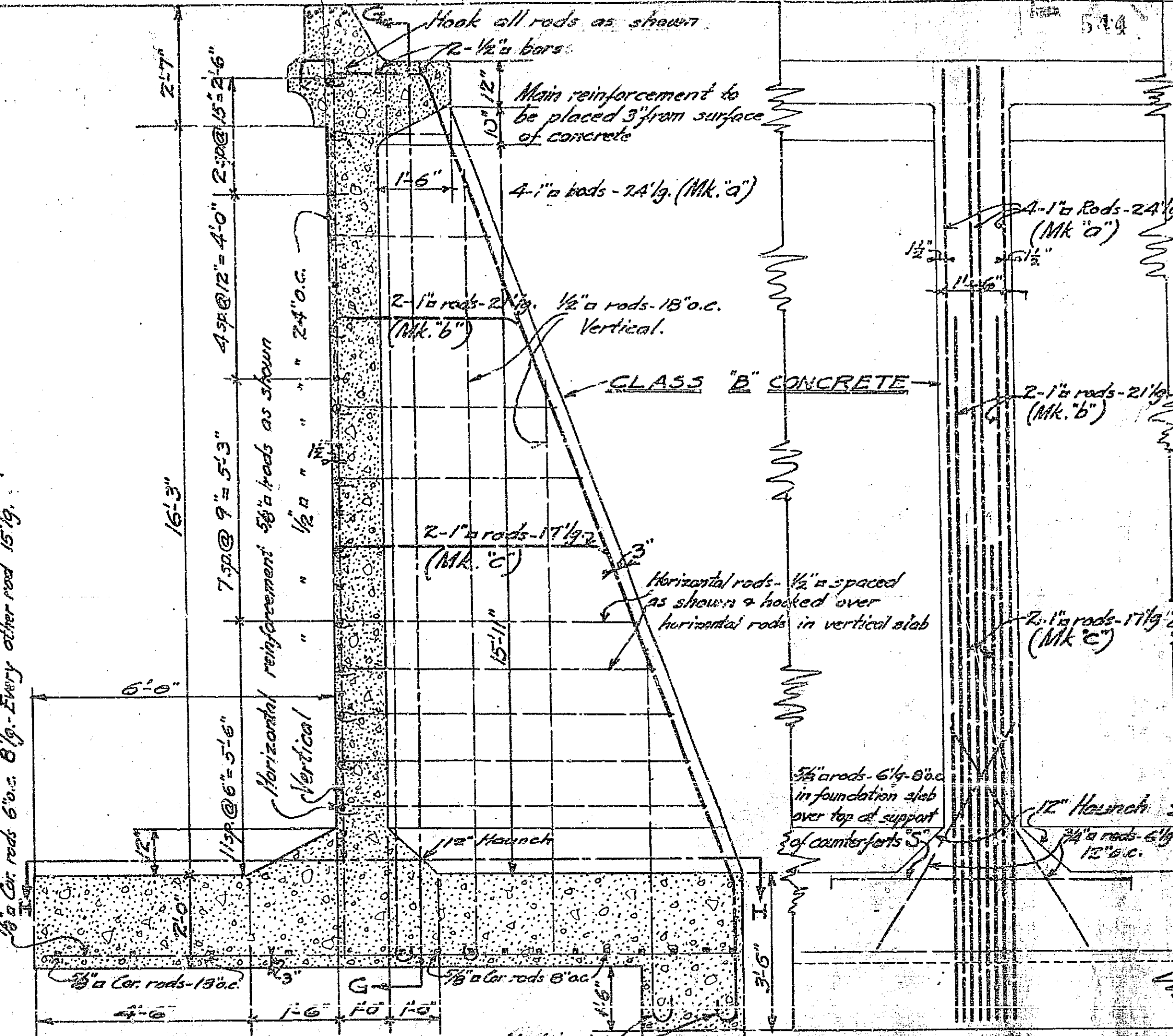
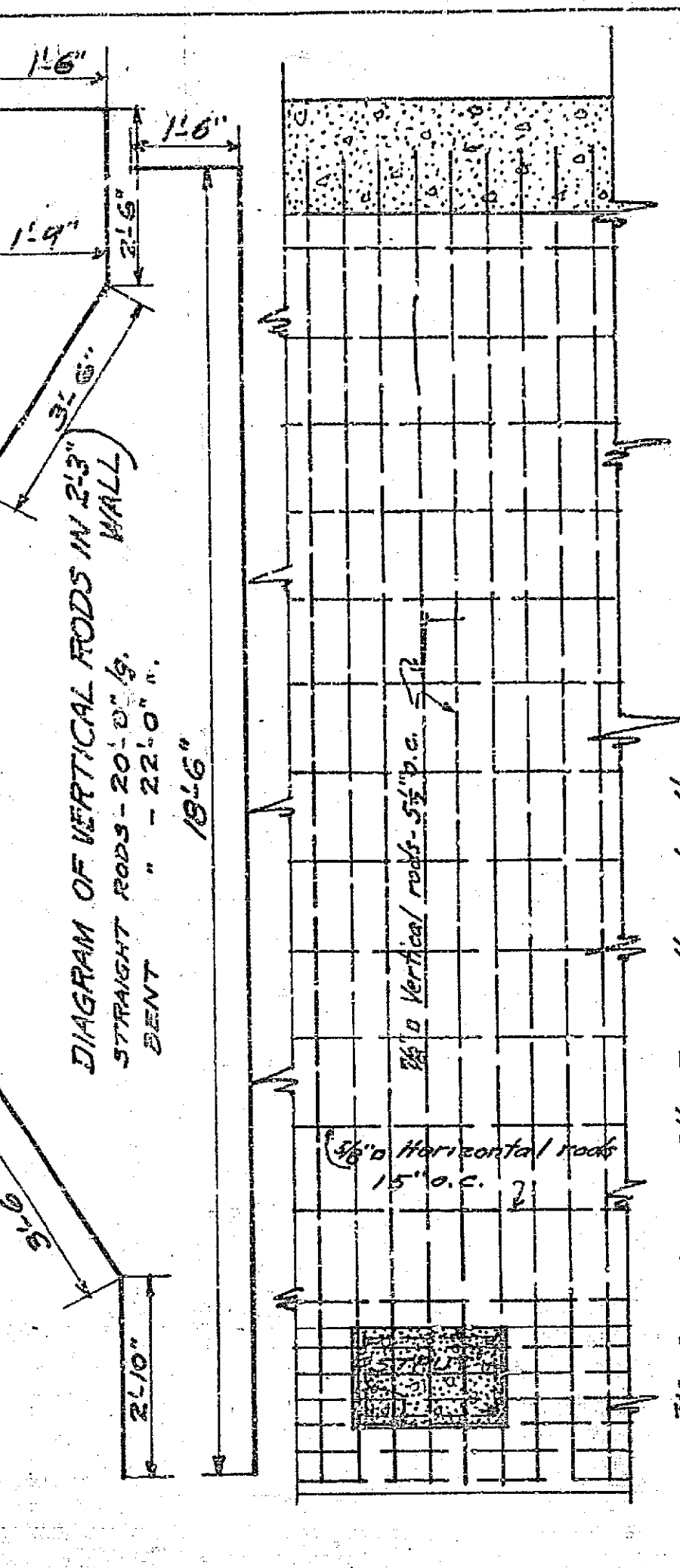
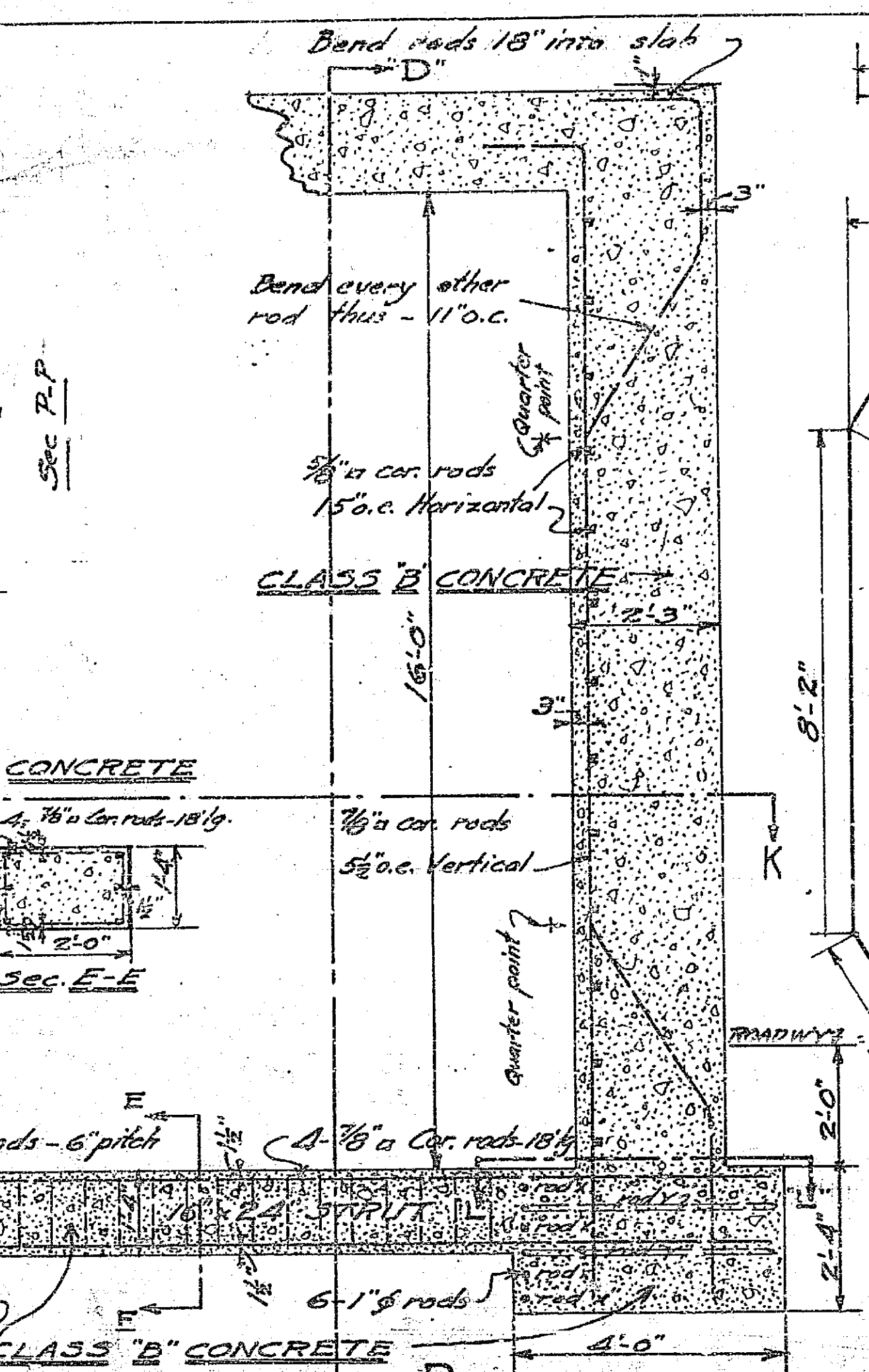
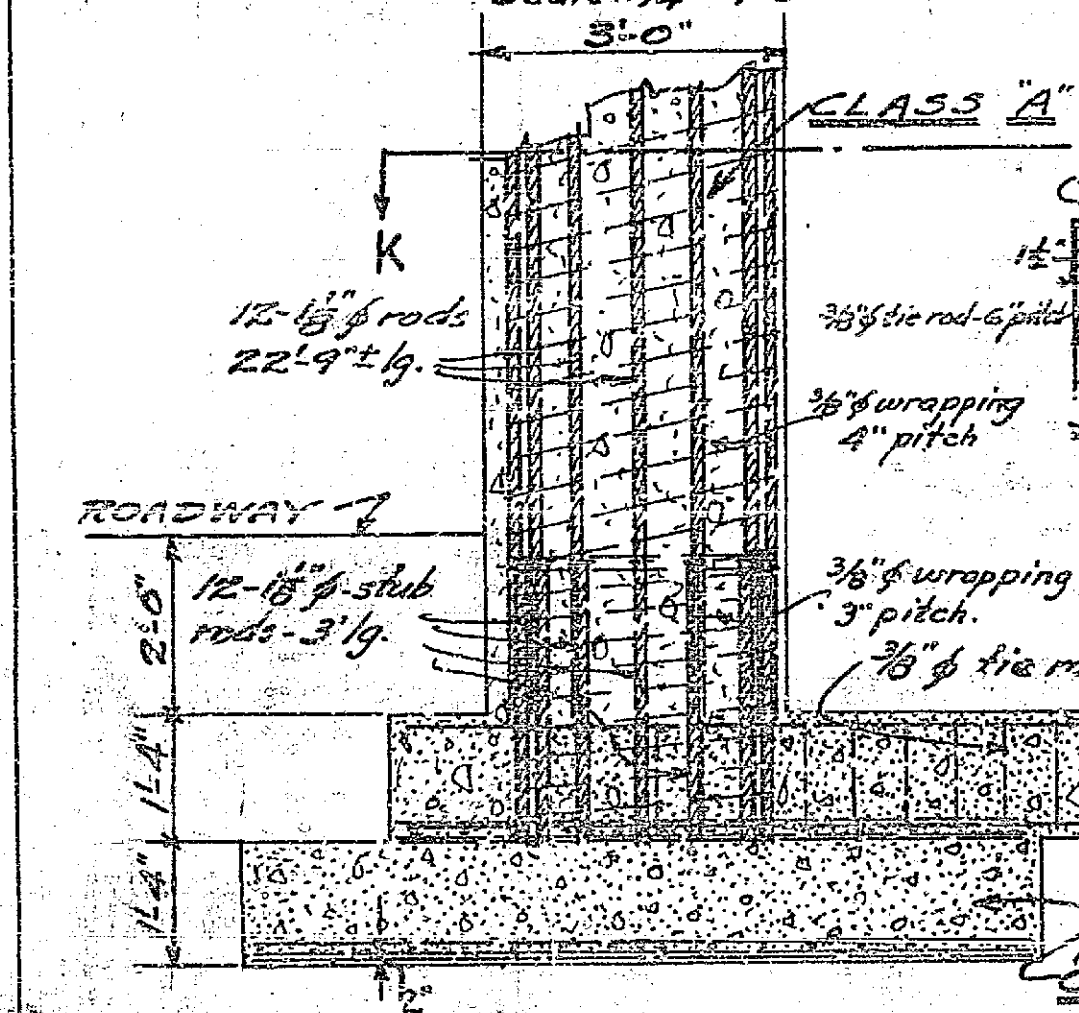
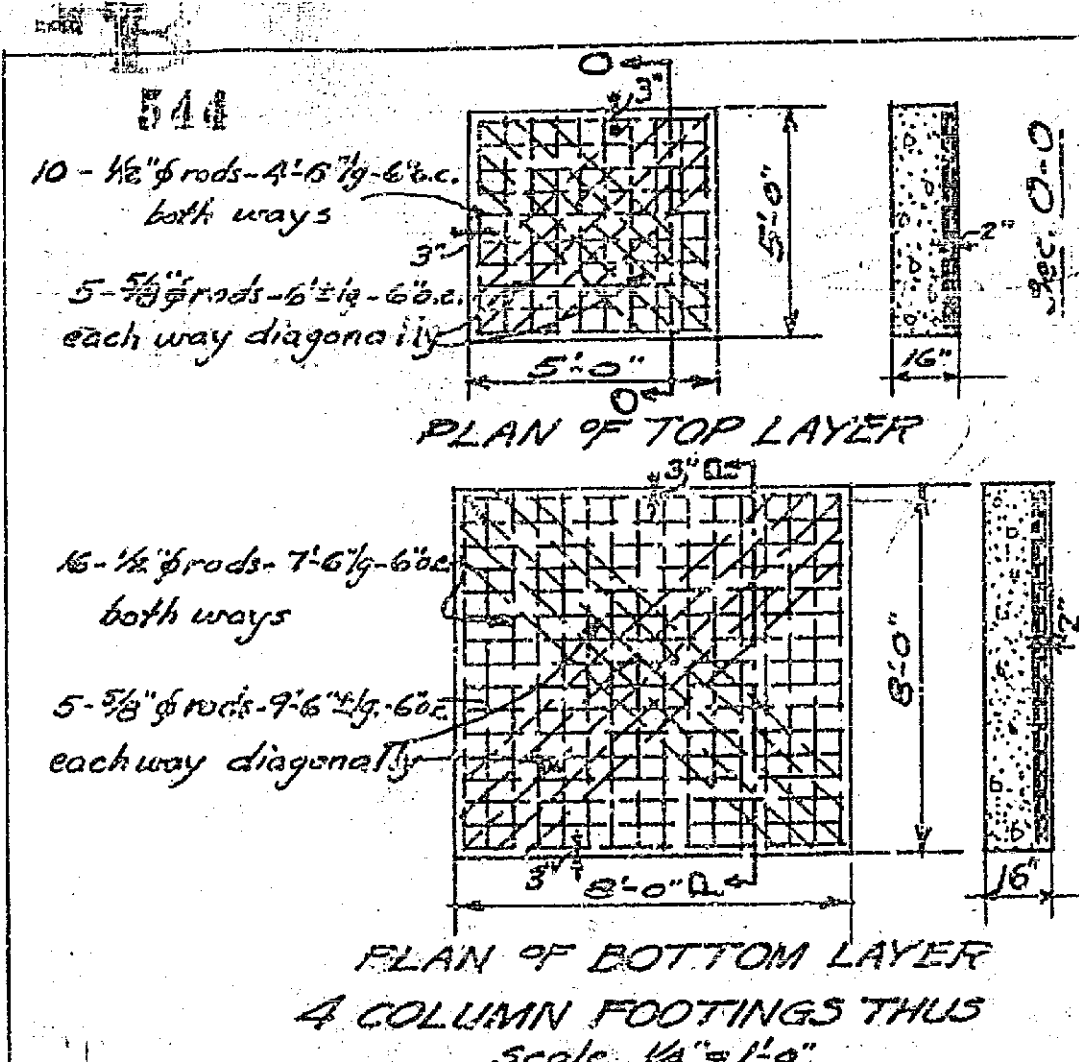
U. S. PATENT NO. 755,483
U. S. PATENT NO. 853,050
U. S. PATENT NO. 265,119
U. S. PATENT NO. 1,002,944
U. S. PATENT NO. 1,002,945
U. S. PATENT NO. 1,009,364
U. S. PATENT NO. 1,023,056
U. S. PATENT NO. 1,032,571
U. S. PATENT NO. 1,034,638
U. S. PATENT NO. 1,036,364

PATENTED IN ALL CIVILIZED COUNTRIES.

544

544B 544

CONCRETE BRIDGE OVER NORTH MAIN STREET CITY OF RIVERSIDE-CALIFORNIA. TO CARRY DOUBLE TRACK OF CRESCENT CITY RAILWAY.		JOB (12) SHEET (1)
EDW. T. FLAHERTY - ENGINEER 529-60 W. HELLMAN BLDG. - LOS ANGELES		DRAWN BY 173
APPROVED 	APPROVED 	CHECKED BY
APPROVED 	APPROVED 	DATE 10/4/18



END COUNTERFORT "I"

NOTE:-
 - Make width of Counterfort 12" instead of 13".
 - Use 5-1" cor. rods for counterfort main rods instead of 8-1" cor. rods. Bend 3-1" cor. (Mk. a) and 2-1" cor. (Mk. b).
 - All other reinforcement to be same as in Wall "S".

GENERAL NOTES.

- All reinforcing steel to be medium open hearth and to be corrugated bars.
 - Tie together all rods with #16 wire.
 - CLASS "A" CONCRETE TO BE A 1:2:3 3/4 MIXTURE
 - CLASS "B" " " " " 1:2:5 " "
 - Dimensions to govern only.

MUSHROOM SYSTEM
 (TRADE MARK)
CONCRETE CONSTRUCTION

U. S. PATENT NO. 795,463
 U. S. PATENT NO. 859,858
 U. S. PATENT NO. 925,119
 U. S. PATENT NO. 1,002,244
 U. S. PATENT NO. 1,002,545
 U. S. PATENT NO. 1,003,384
 U. S. PATENT NO. 1,025,036
 U. S. PATENT NO. 1,052,871
 U. S. PATENT NO. 1,084,838
 U. S. PATENT NO. 1,036,384

PATENTED IN ALL CIVILIZED COUNTRIES.

CONCRETE BRIDGE
 OVER NORTH MAIN STREET
 CITY OF RIVERSIDE - CALIFORNIA
 TO CARRY DOUBLE TRACK OF
 PRESENT CITY RAILWAY

EDW. T. FLAHERTY - ENGINEER
 559-60 J. W. HELLMAN BLDG. - LOS ANGELES.

APPROVED: [Signature] MAYOR
 APPROVED: [Signature] CHIEF ENGINEER
 CITY ENGINEER

JOB 12
 SHEET 2
 DRAWN BY P. J. S.
 CHECKED BY [Signature]
 DATE 10/4/13

