

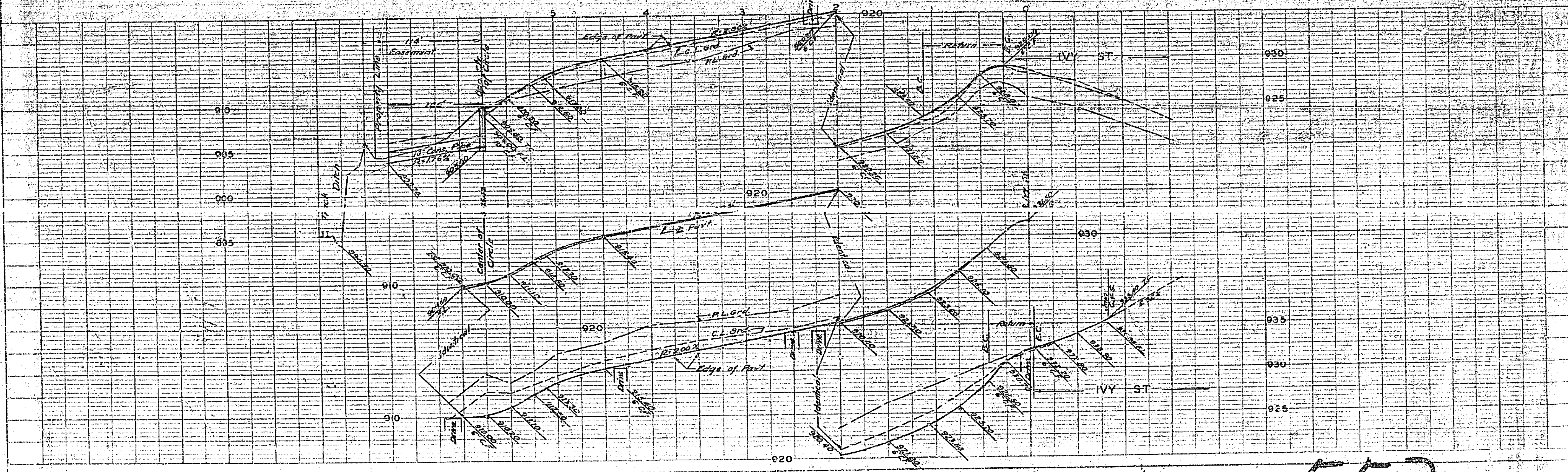
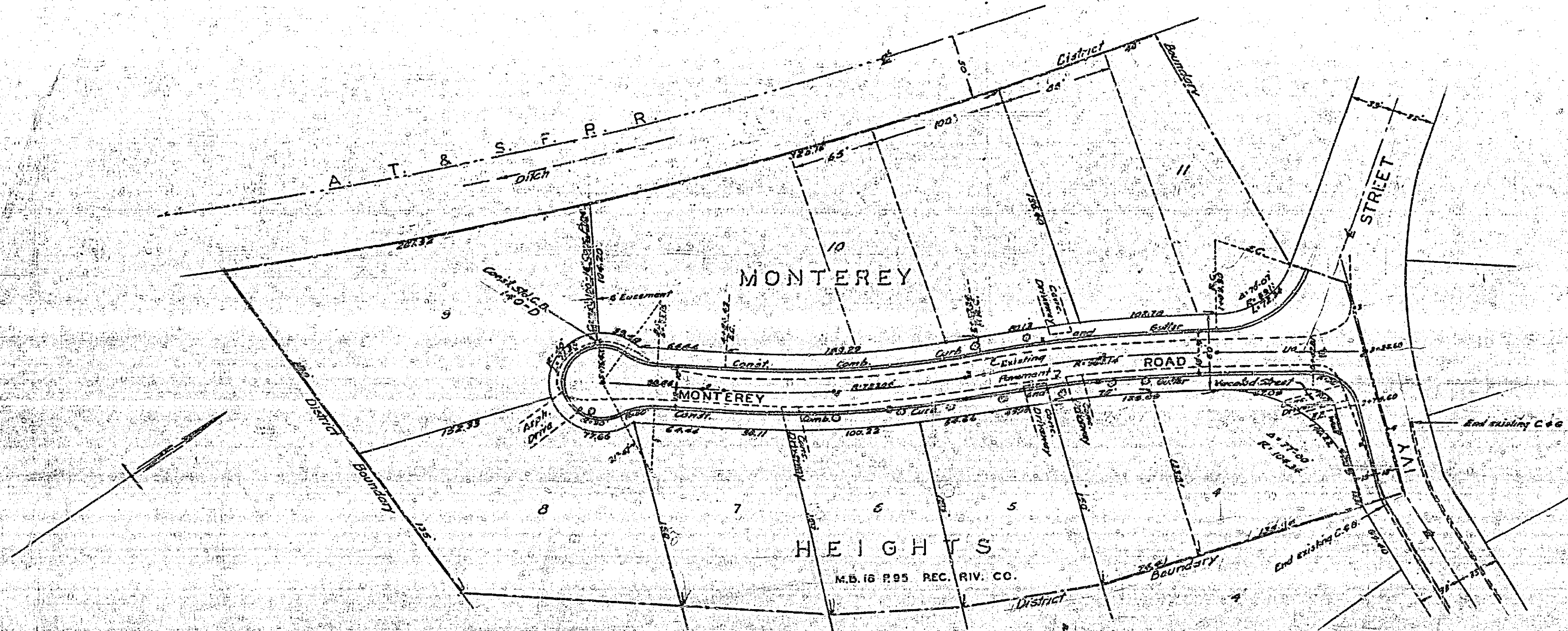
PLAN NO. 552
 FOR THE IMPROVEMENT OF
MONTEREY ROAD
 CITY OF RIVERSIDE CALIFORNIA

SCALE: HOR. 1/4" = 50 FT.
 VERT. 1/4" = 5 FT.

FB. 513-P.15

APPROVED: *M. H. Swain*
 MUNICIPAL ENGINEER - REG. C.E. NO. 3011
 CITY ENGINEER

THESE PLANS APPROVED AND ADOPTED BY THE
 MAYOR AND COUNCIL OF THE CITY OF RIVERSIDE,
 STATE OF CALIFORNIA, ON THIS 22ND DAY OF *July*, 1952.
D. H. Wash
 CITY CLERK



| | |
|----------|--|
| DATE | |
| BY | |
| FOR | |
| REVISION | |
| NO. 1 | |
| NO. 2 | |
| NO. 3 | |
| NO. 4 | |
| NO. 5 | |
| NO. 6 | |
| NO. 7 | |
| NO. 8 | |
| NO. 9 | |
| NO. 10 | |

| | |
|----------|--|
| DATE | |
| BY | |
| FOR | |
| REVISION | |
| NO. 1 | |
| NO. 2 | |
| NO. 3 | |
| NO. 4 | |
| NO. 5 | |
| NO. 6 | |
| NO. 7 | |
| NO. 8 | |
| NO. 9 | |
| NO. 10 | |

PLATE 1 - PLAN - PROFILE OF MONTEREY ROAD
 MONTEREY ROAD, RIVERSIDE, CALIFORNIA
 P. & E. CO., INC. 548-41

552