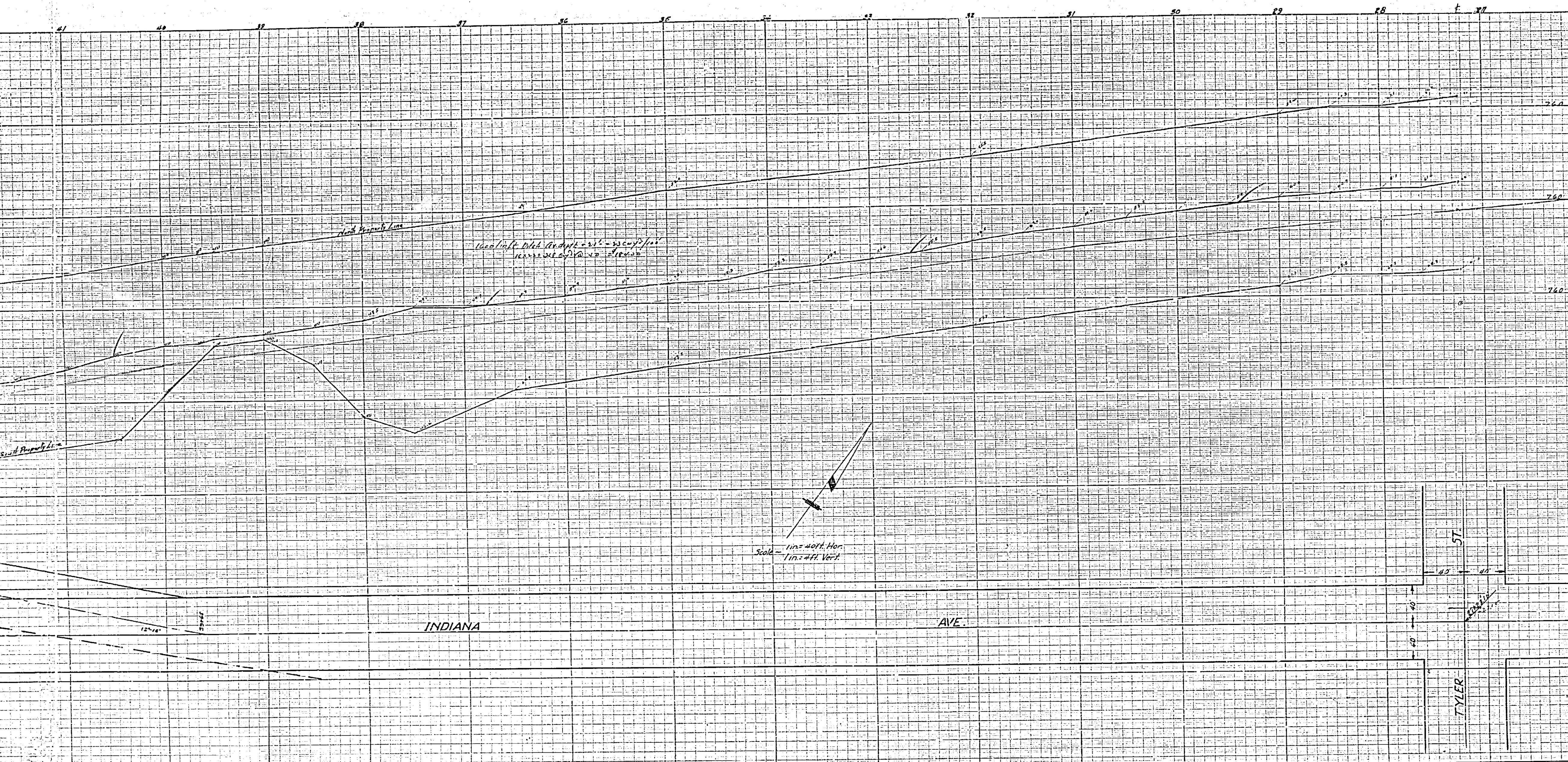


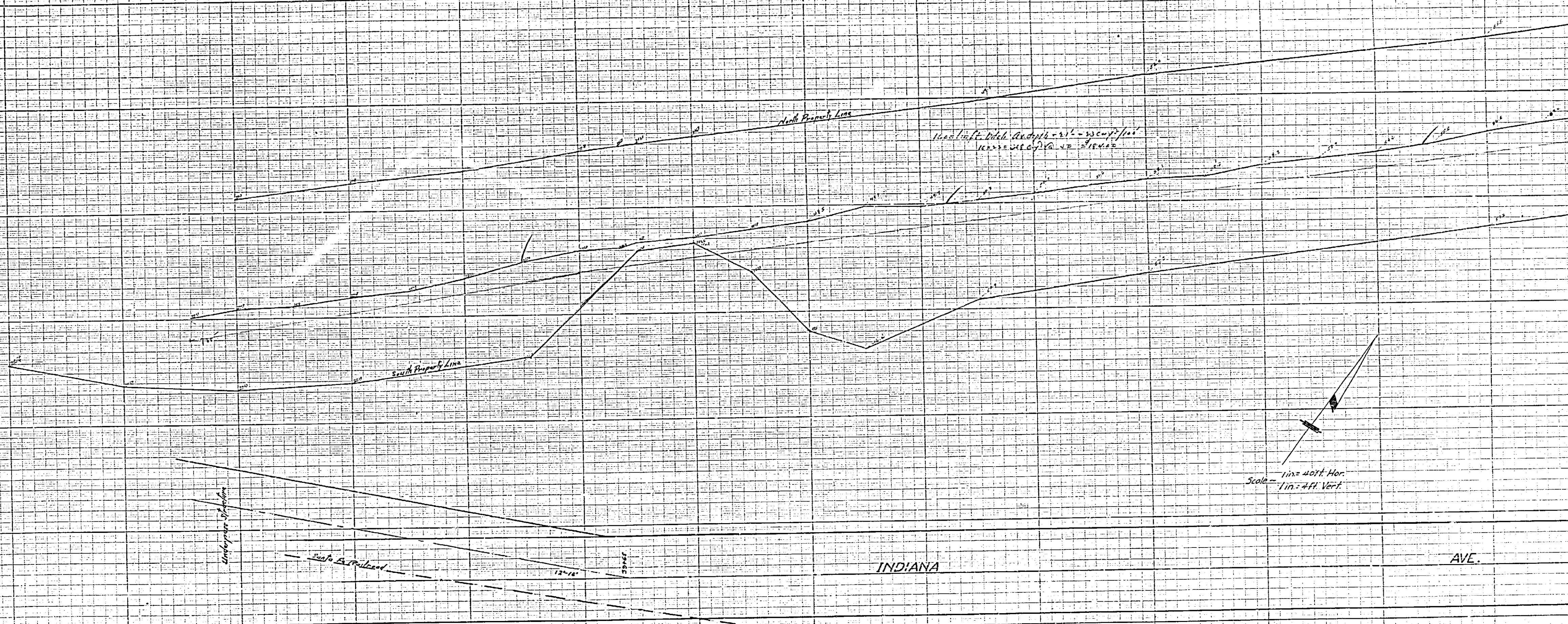
PROFILE
 INDIANA AVENUE
 BETWEEN
 TYLER AND POLK ST.
 ENGINEERING DEPT. - CITY OF RIVERSIDE
 FEB. 27, 1933



FRAME 1 OF 2

55-A

45 44 43 42 41 40 39 38 37 36 35 34 33 32



FRAME 2 OF 2

11/11/11