

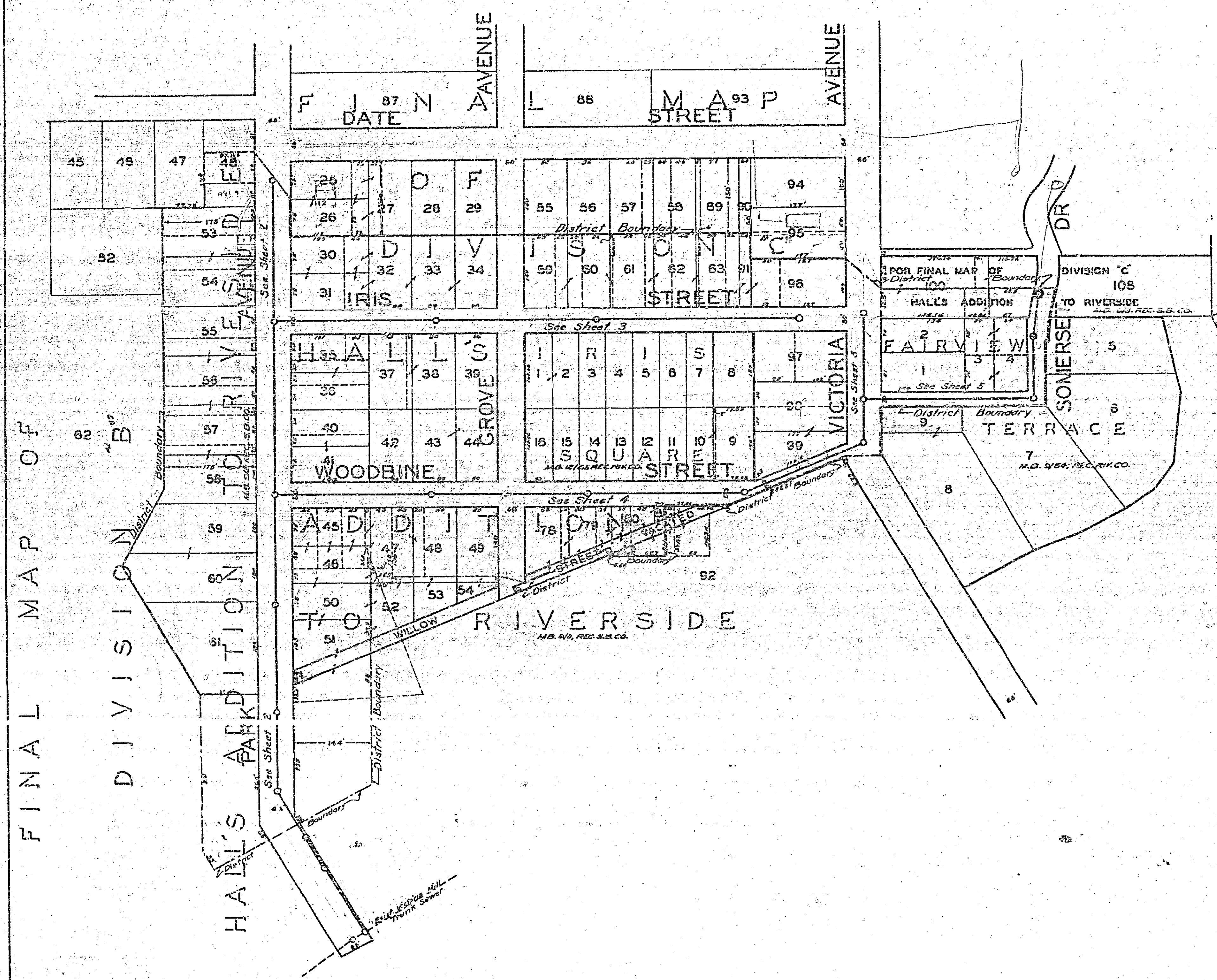
PLANS AND PROFILES
NO. 560
OF
PARK-IRIS
SANITARY SEWER DISTRICT
RIVERSIDE, CALIFORNIA

District Boundary shown thus ———
FIELD BOOK: 469 PAGE 45

APPROVED *M. H. Irvine*
M. H. IRVINE, REG. C.E. NO. 2011
CITY ENGINEER

THESE PLANS APPROVED AND ADOPTED
BY THE MAYOR AND COUNCIL OF THE CITY
OF RIVERSIDE STATE OF CALIFORNIA ON
THIS _____ DAY OF _____ 1950
CITY CLERK

SCALE: 1" = 100'



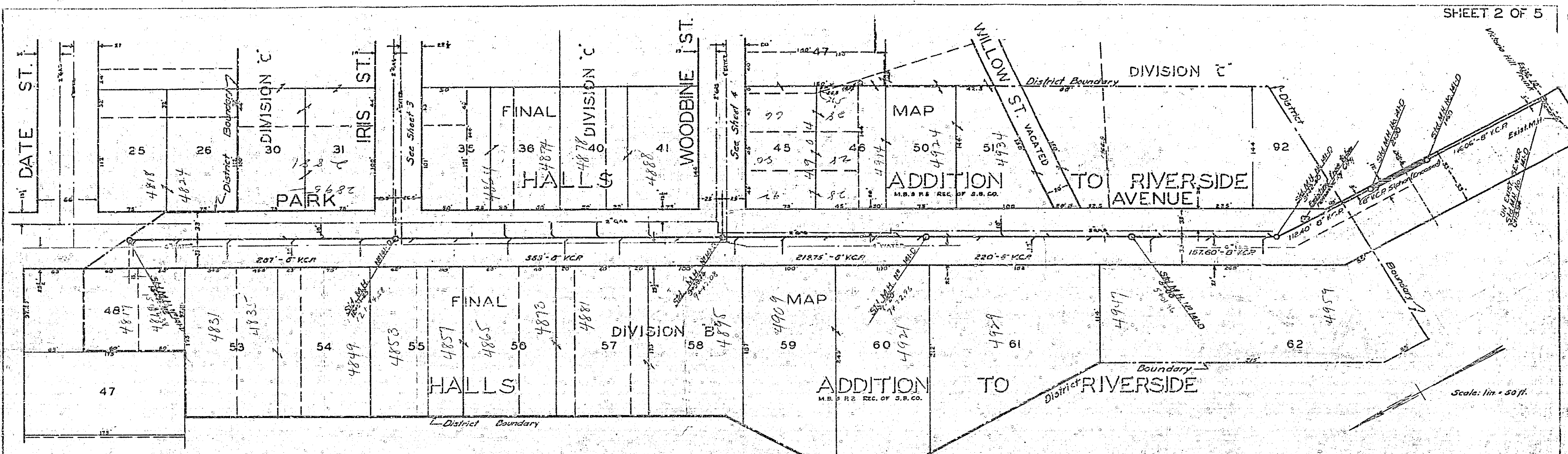
FINAL MAP OF

DIVISION B

HALL'S ADDITION

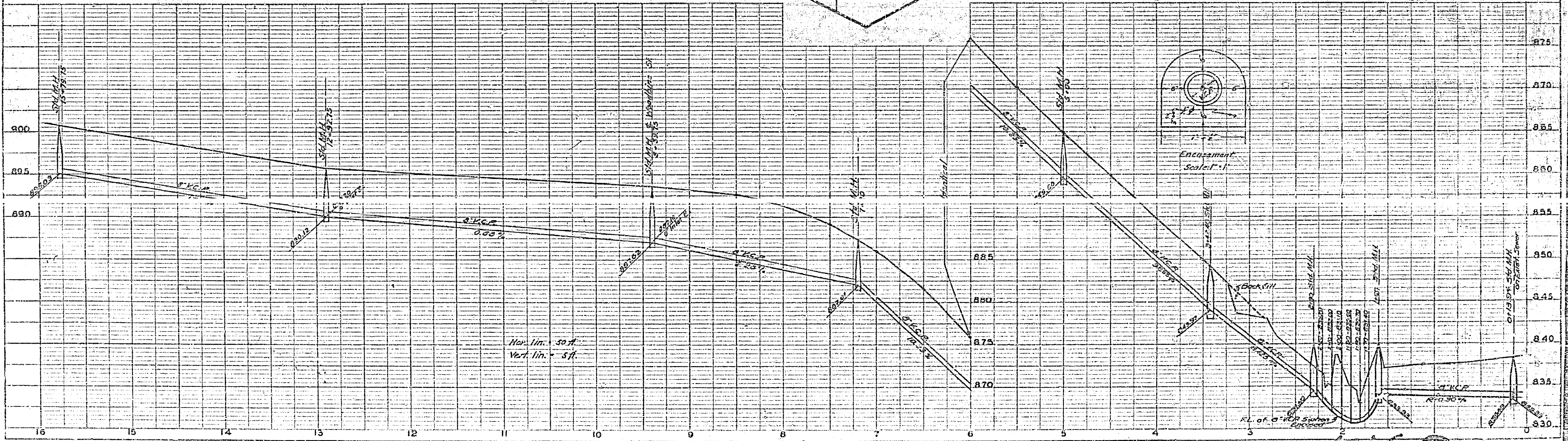
TO RIVERSIDE

560



PLAN	DATE
BY	
CHECKED	
DATE	
SCALE	
BY	
DATE	

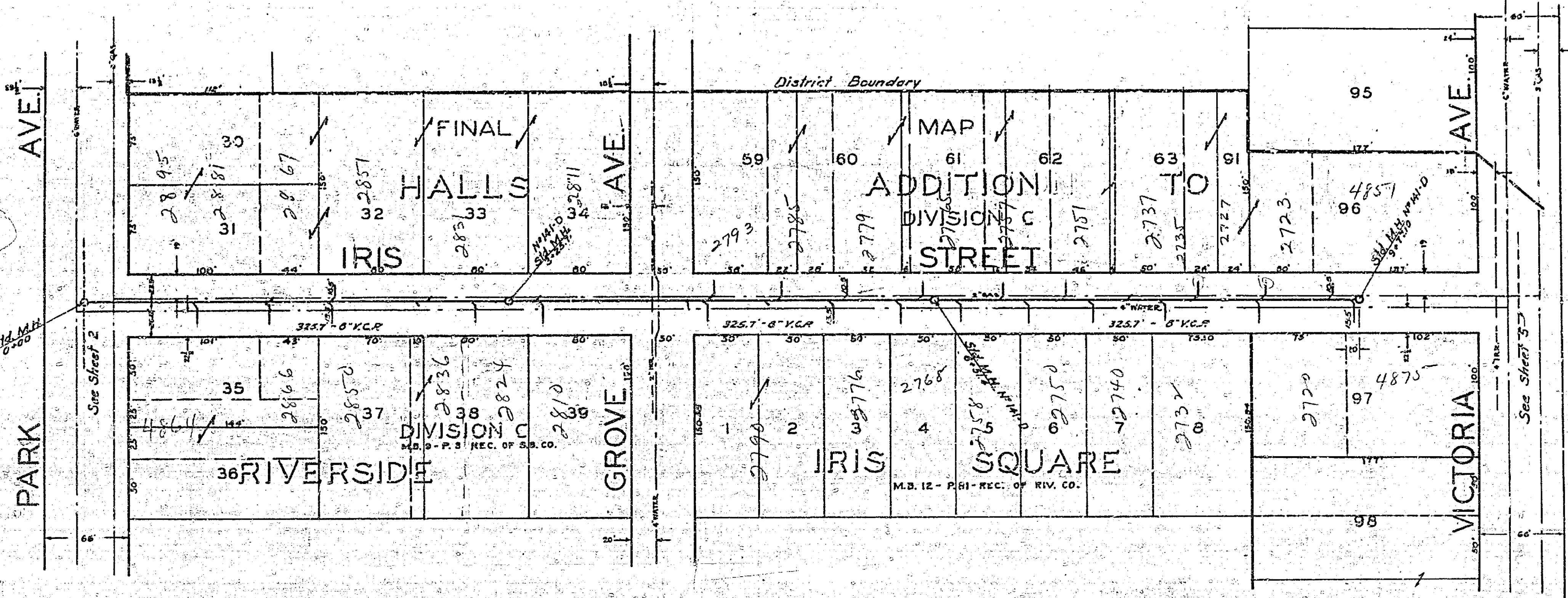
PROFILE	DATE
BY	
CHECKED	
DATE	
SCALE	
BY	
DATE	



Scale: 1 in. = 50 ft.

4849

PLAN	REVISED	DATE
NOTED	CHANGED	
BY	NO. OF REV.	



PROFILE	REVISED	DATE
NOTED	CHANGED	
BY	NO. OF REV.	

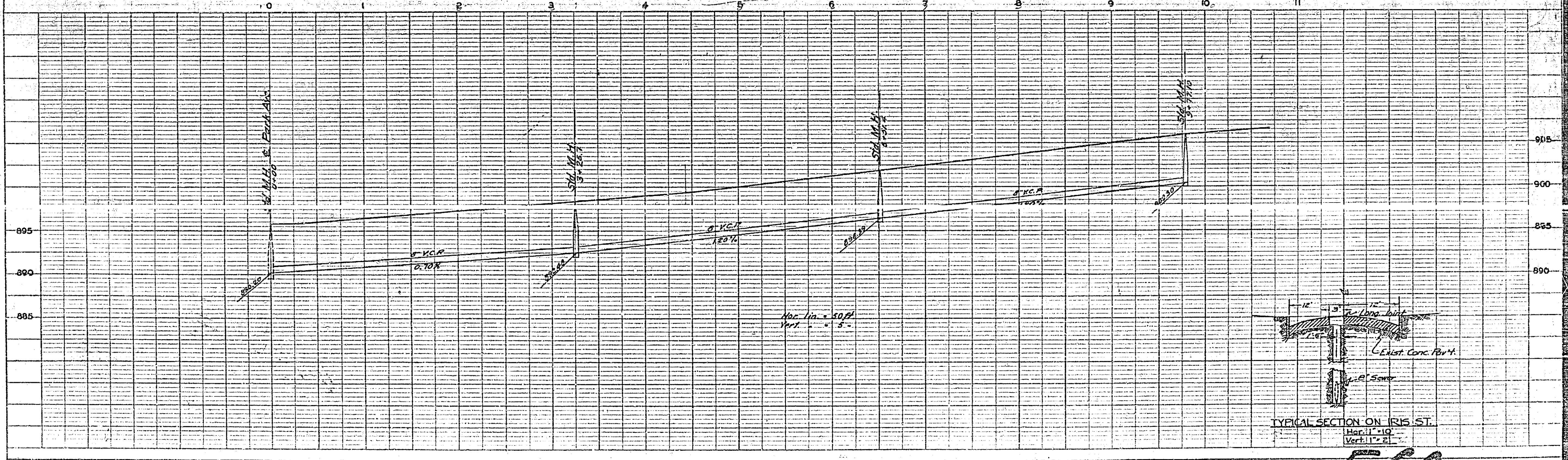
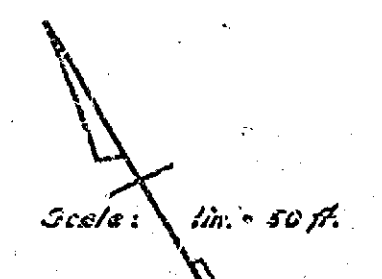


PLATE 1 - PLAN - PROFILE OF P. & R. C. STATIONING

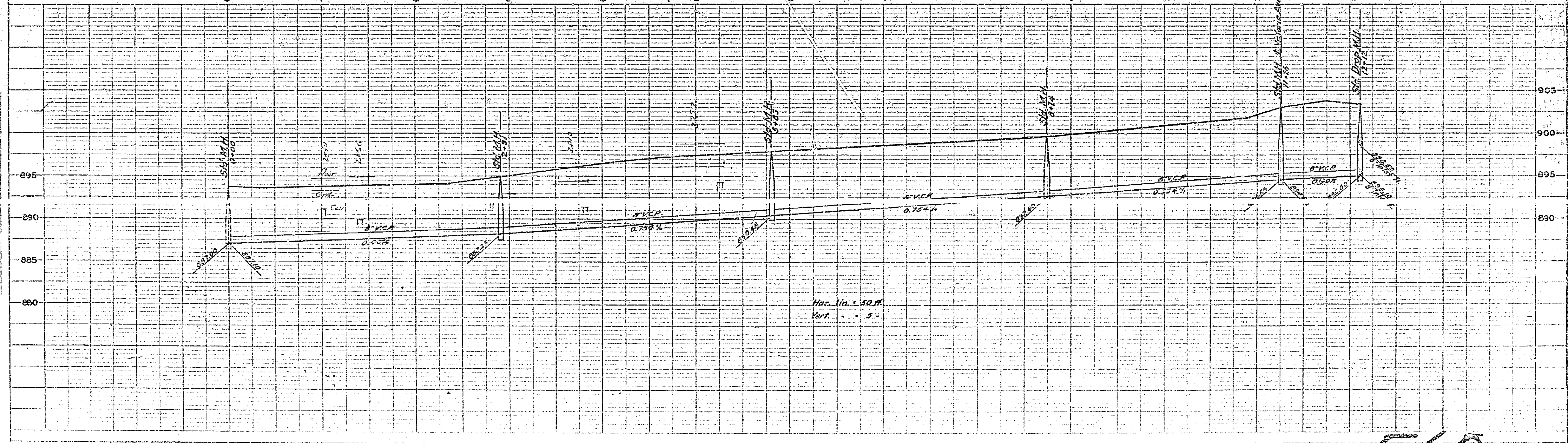
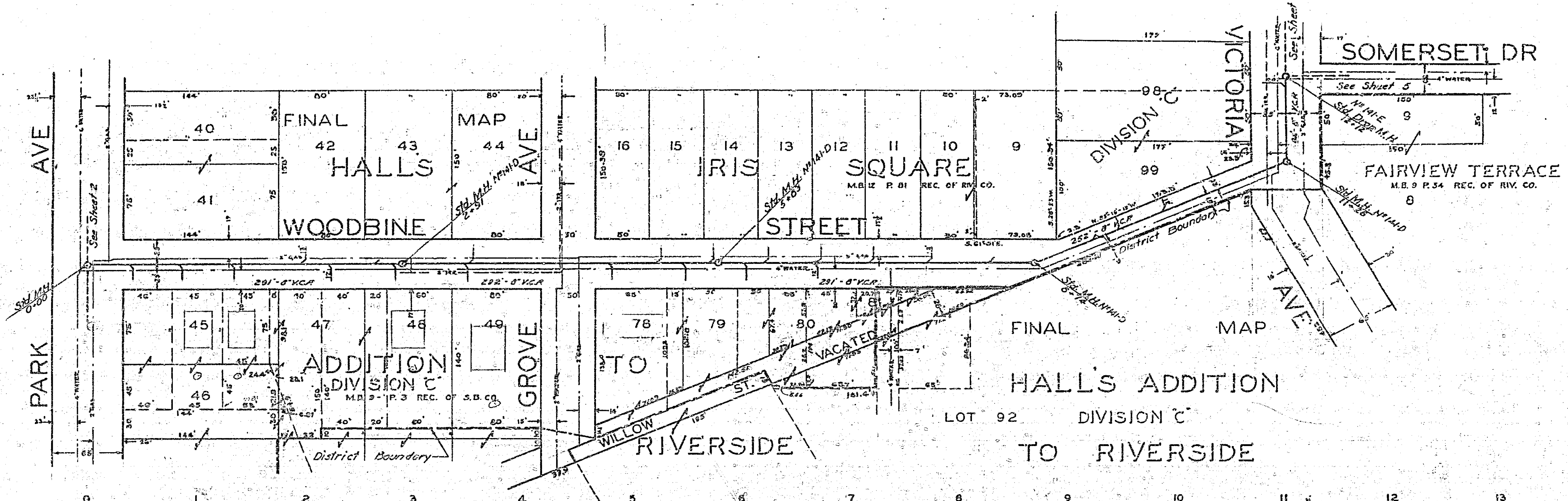
560



Scale: 1 in. = 50 ft.

PLAN	DATE	BY
NOTE		
REVISION		
NO.		

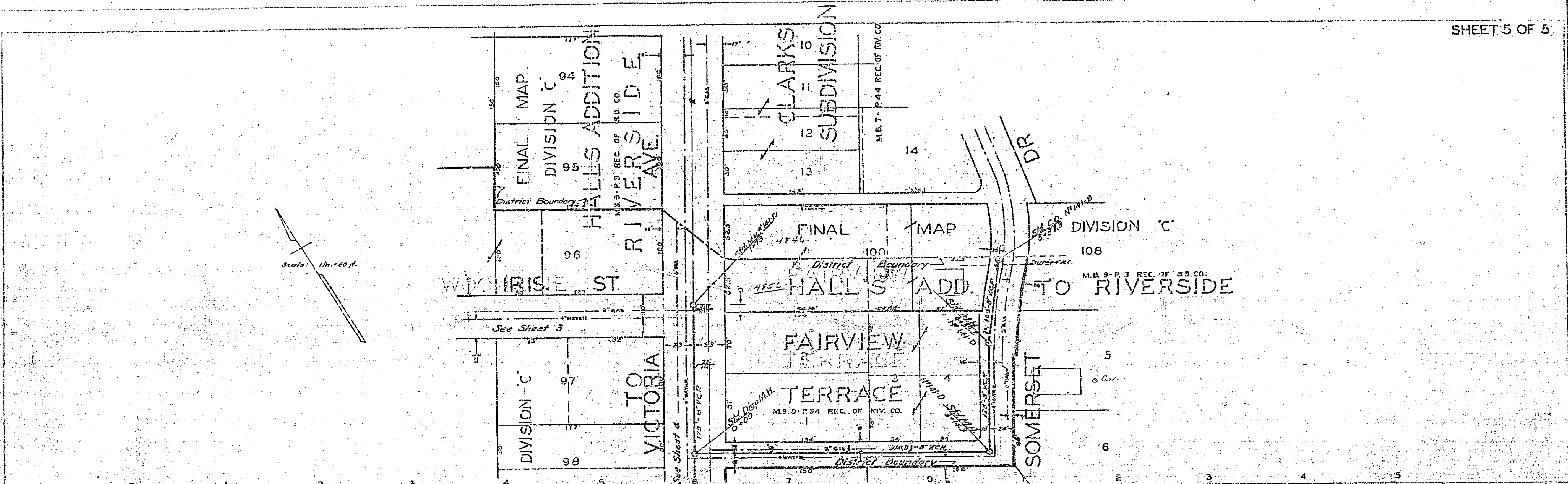
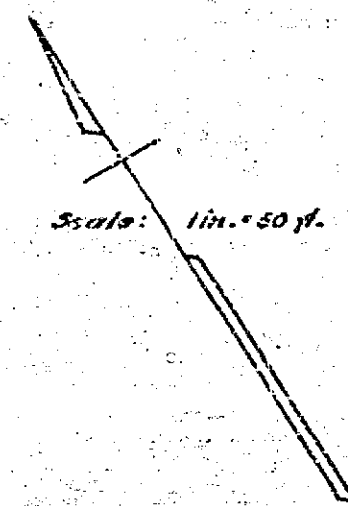
PROFILE	DATE	BY
NOTE		
REVISION		
NO.		



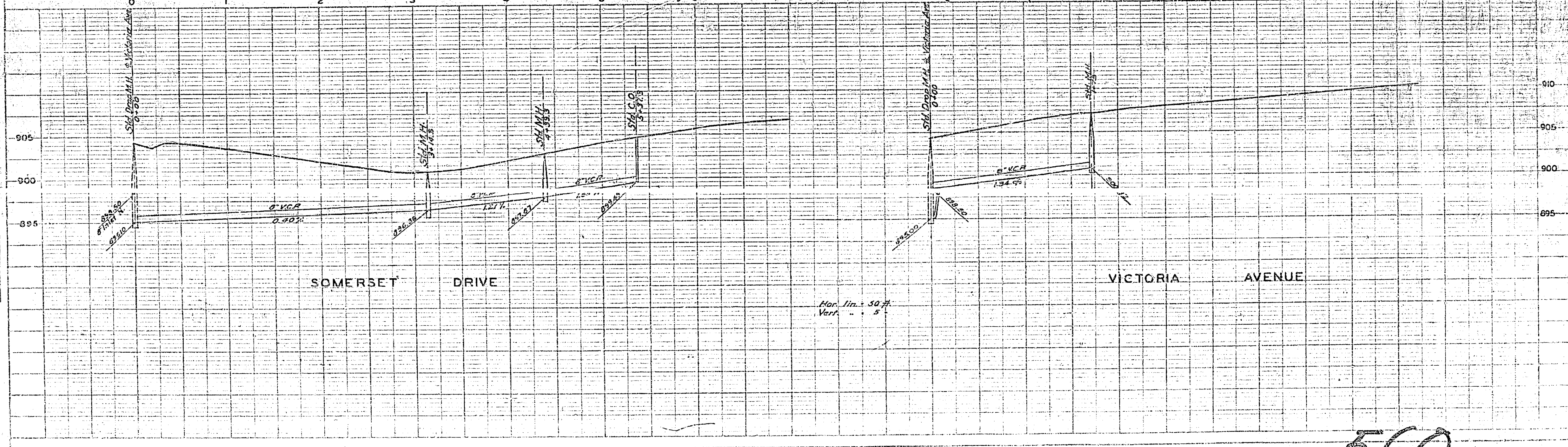
Hor. lin. = 50 ft.
Vert. " = 5'

560

PLAN	DATE	BY
REVISION		
NO.	DATE	BY
1		
2		
3		
4		
5		



PROFILE	DATE	BY
REVISION		
NO.	DATE	BY
1		
2		
3		
4		
5		



Hor. 1 in. = 50 ft.
Vert. 1 in. = 5'

560

NOTE: 1. PLAN PROFILE SHOWN ON SHEET 4 OF 5. 2. SEE SHEET 3 FOR DETAILS OF SOMERSET DRIVE.