

DRAWING NUMBER 561	SHEET NUMBER 1	FIELD BOOKS
DRAWN BY	CHECKED BY	APPROVED BY

STOTTS STREET
GARFIELD AVE. TO MAGNOLIA AVE.
ENGINEERING DEPT. RIVERSIDE CALIF. NOV. 1945.

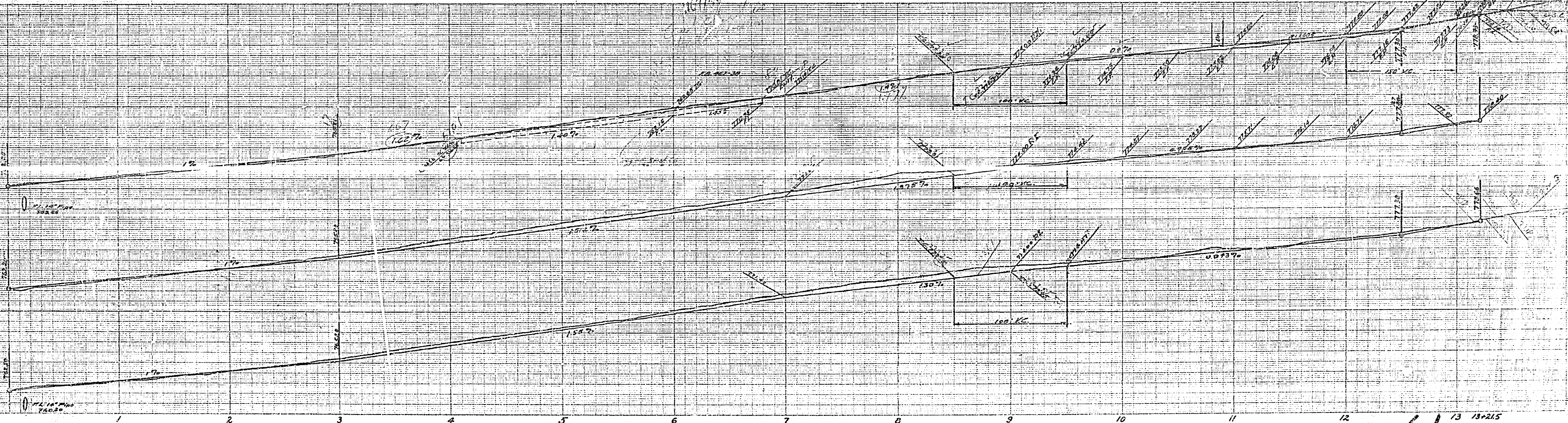
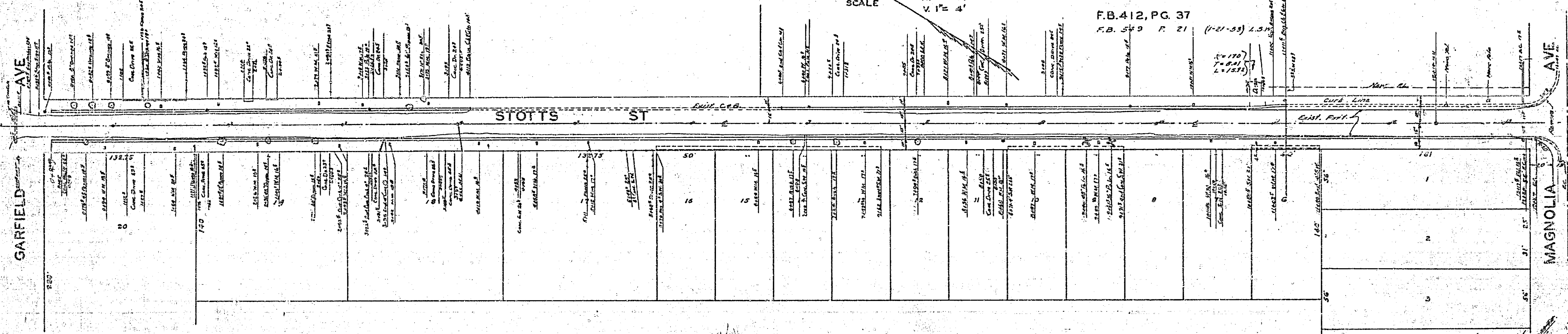
CITY (U.S.G.S.) DATUM PLANE

APPROVED: *[Signature]*
CITY ENGINEER REG. NO. 8134

SCALE
H. 1" = 40'
V. 1" = 4'

F.B. 412, PG. 37
F.B. 549 P. 21

(1-21-53) L.S.M.
1" = 100'
1" = 100'



561 100