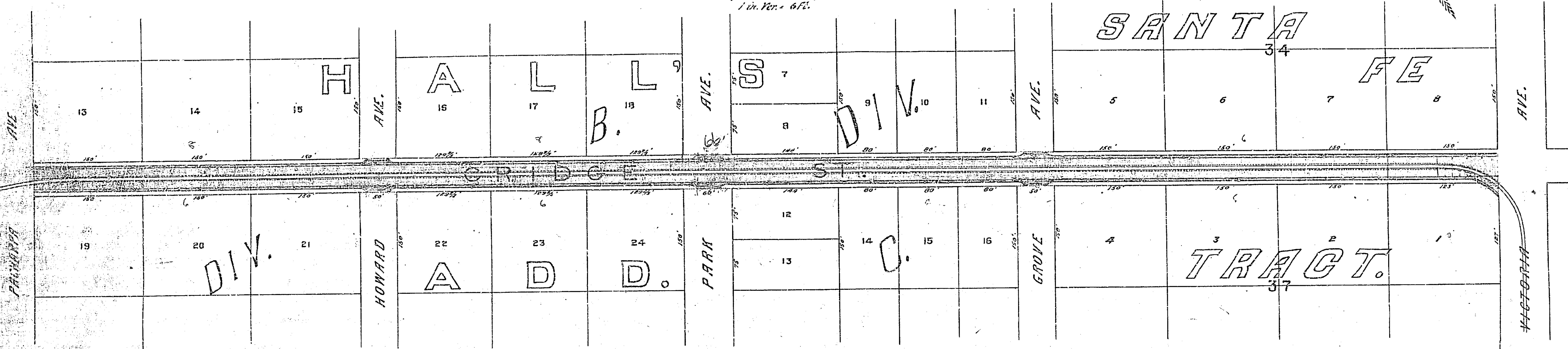
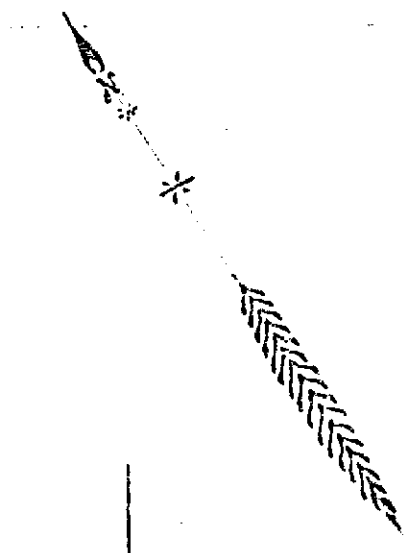


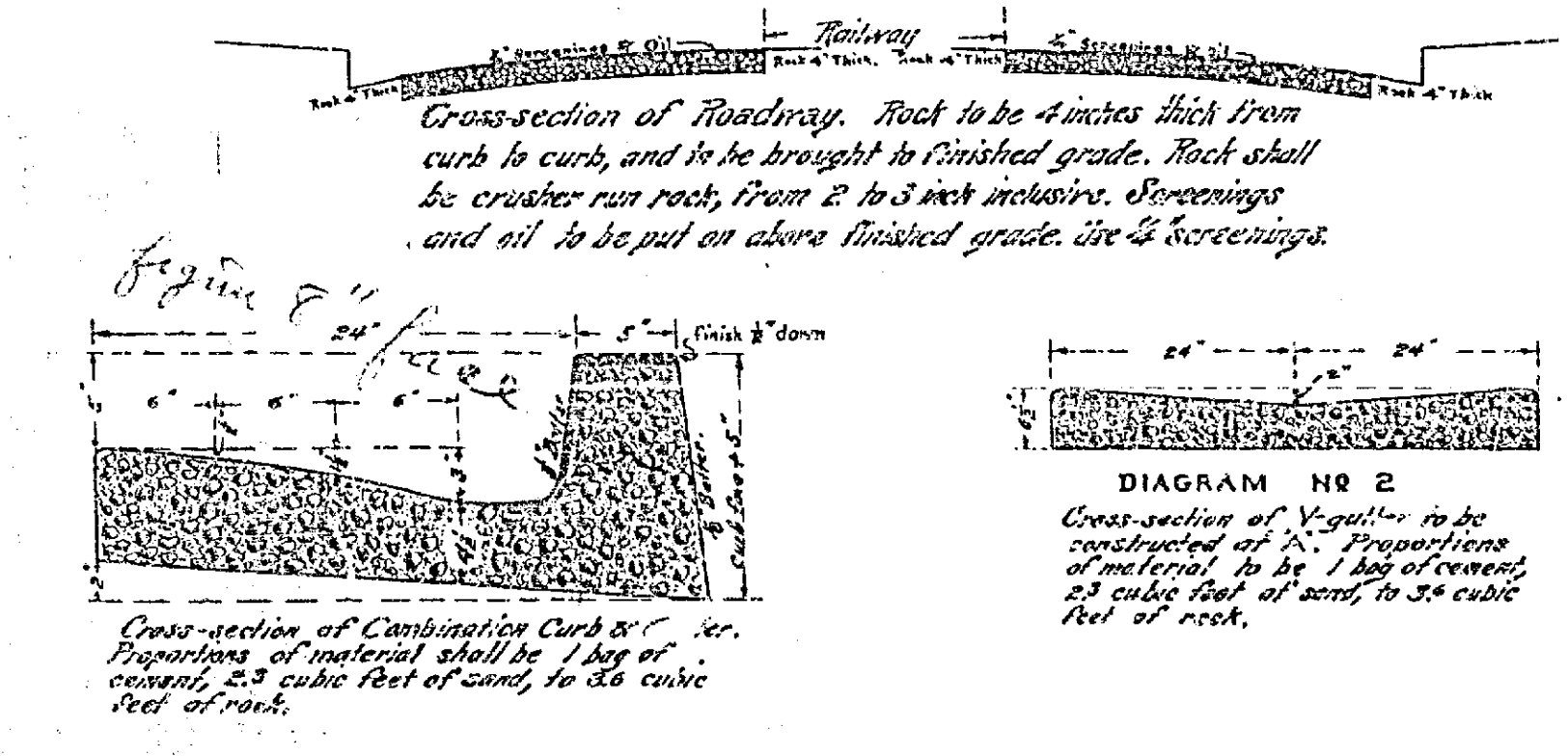
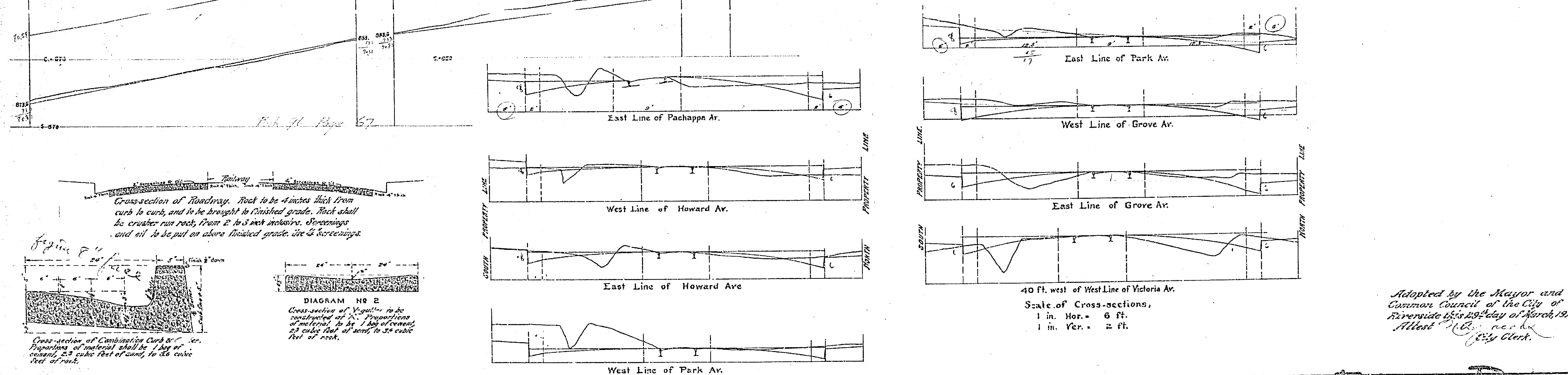
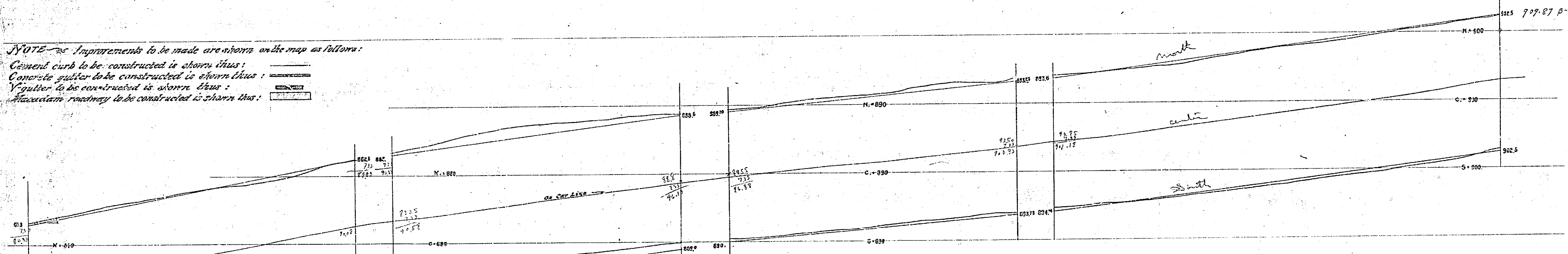
MAP SHOWING IMPROVEMENTS TO BE MADE ON CRIDGE ST.

Scale of Map, 1 inch = 60 ft.
Profile, 1 in. hor. = 60 ft.,
1 in. ver. = 6 ft.



NOTE—Improvements to be made are shown on the map as follows:

- Cement curb to be constructed is shown thus:
- Concrete gutter to be constructed is shown thus:
- Gutter to be constructed is shown thus:
- Macadam roadway to be constructed is shown thus:



Scale of Cross-sections,
1 in. Hor. = 6 ft.
1 in. Ver. = 2 ft.

Adopted by the Mayor and
Common Council of the City of
Riverside this 29th day of March, 1910.
Alfred W. Beebe
City Clerk.

570B