

APPROVED	DATE
REVISION	BY
REVISION	BY
REVISION	BY

PLAN & PROFILE OF SEWER

TO BE CONSTRUCTED IN

PALM COURT

ENGINEERING DEPT. RIVERSIDE CALIF. DEC. 1945.

CITY (U.S.G.S) DATUM PLANE

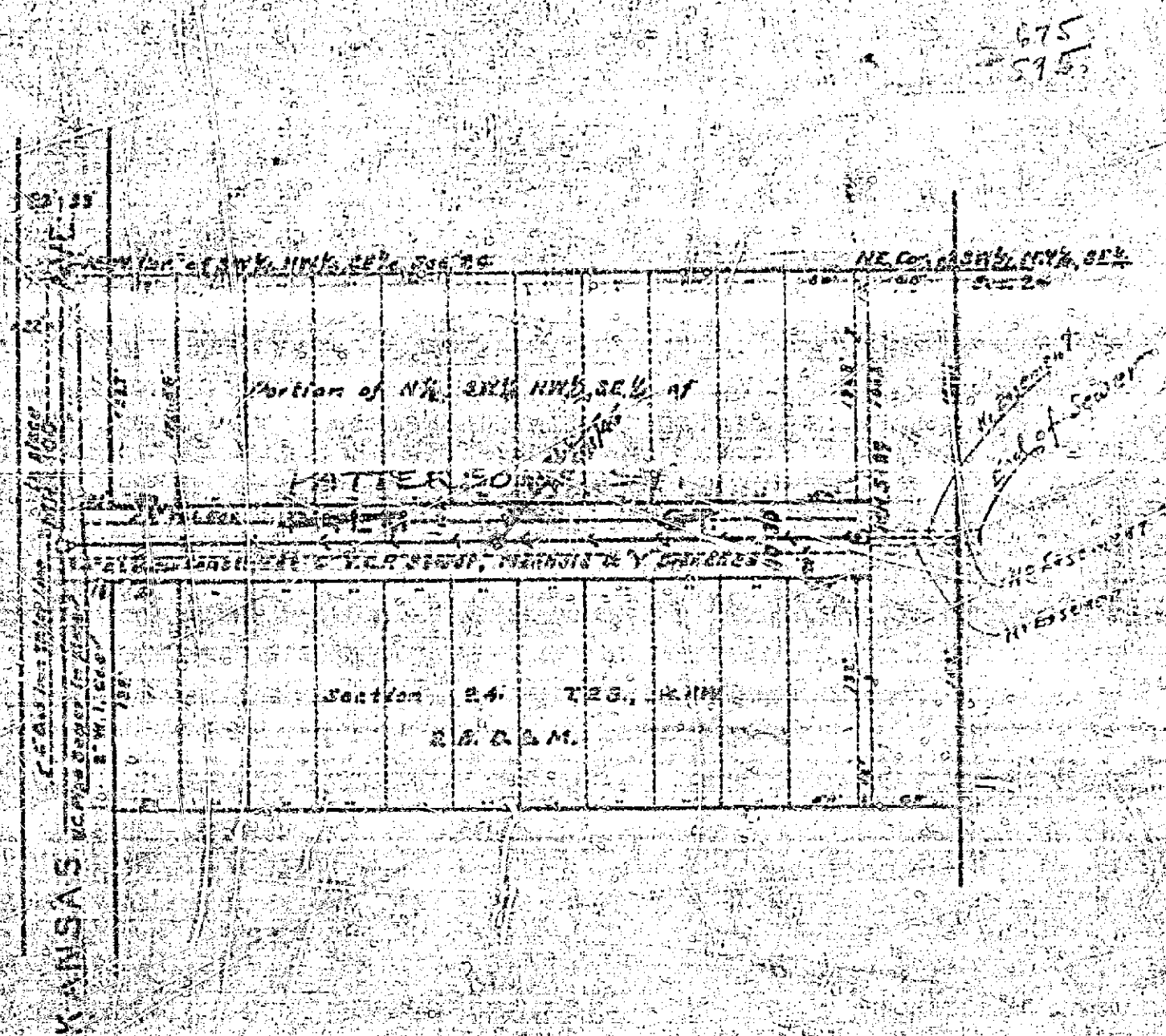
F.B. 408 PG. 63

APPROVED *[Signature]*
REG. ENG. 1312 CITY ENGINEER.

APPROVED AND ADOPTED BY THE MAYOR
AND COUNCIL OF THE CITY OF RIVERSIDE
THIS 8TH DAY OF JANUARY, 1946.

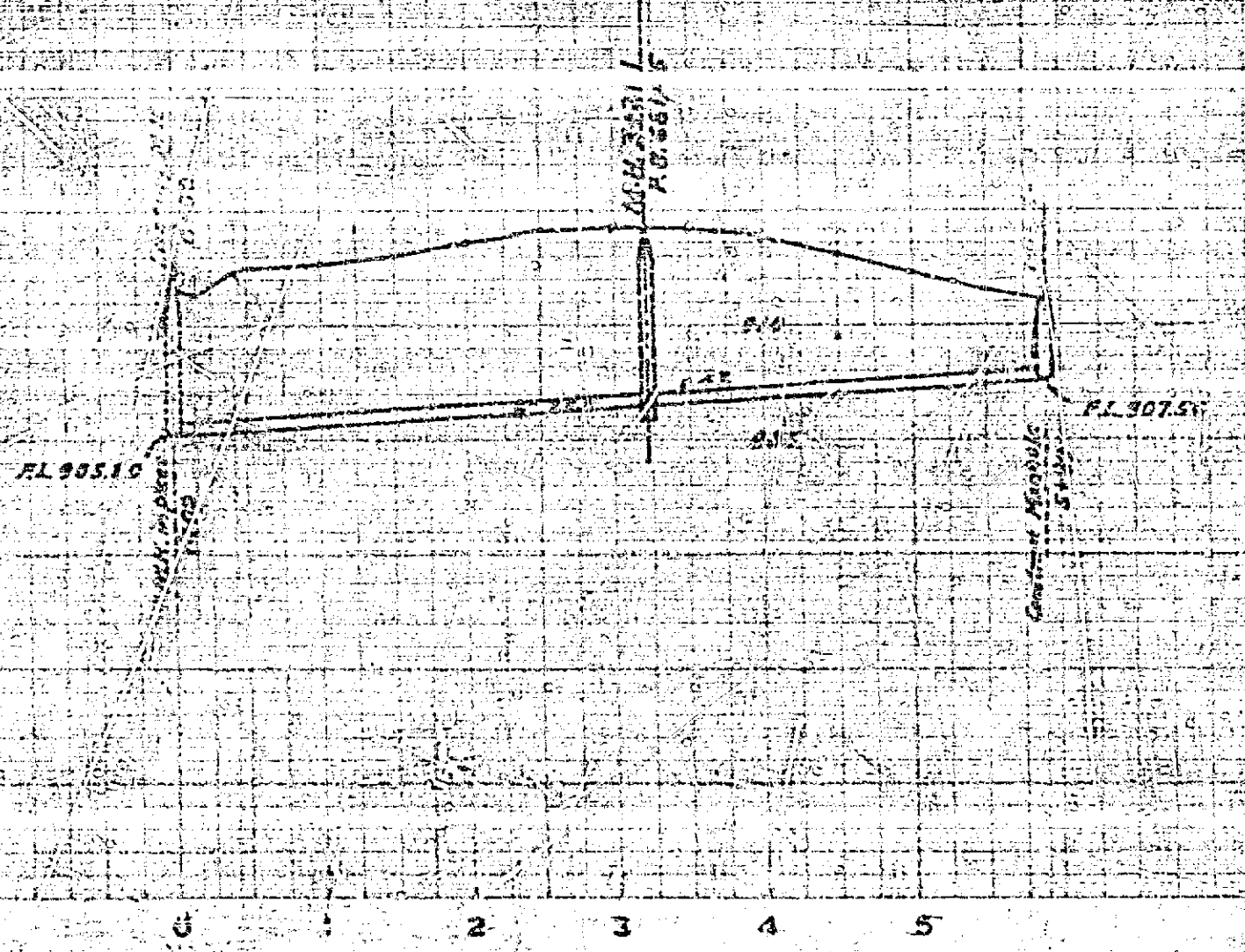
[Signature]
CITY CLERK, CITY OF RIVERSIDE.

SCALE H 1" = 100'
V 1" = 6'



LEGEND
 District to be assessed, bounded by approved line thus: _____
 Sewer to be constructed shown thus: _____
 Constructed sewer shown thus: _____
 Manholes to be constructed shown thus: (Standard No. 121) O
 Y-branches to be constructed shown thus: _____

PROFILE



571 120