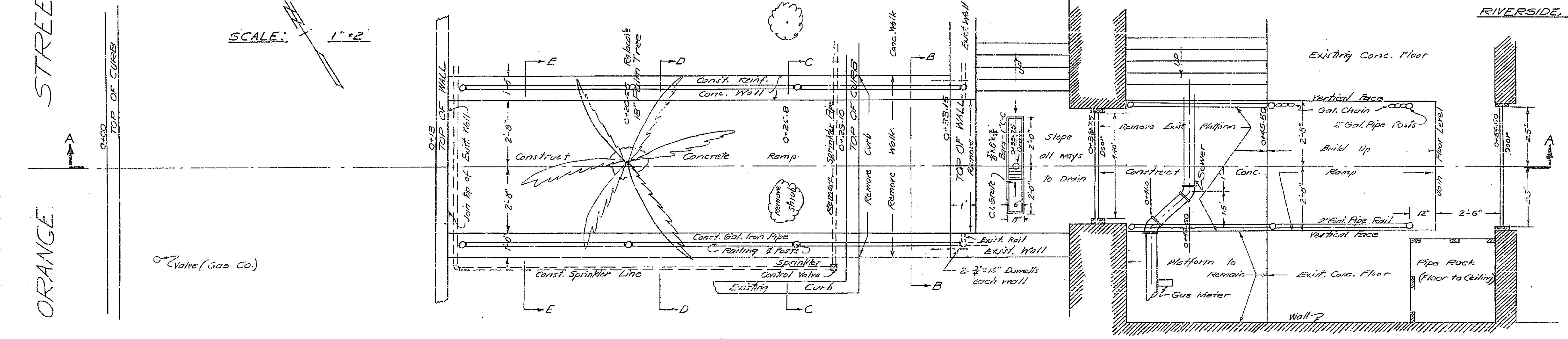


581-H  
 PLAN SHOWING  
 ENTRANCE TO BASEMENT  
 POLICE STATION  
 RIVERSIDE, CALIFORNIA

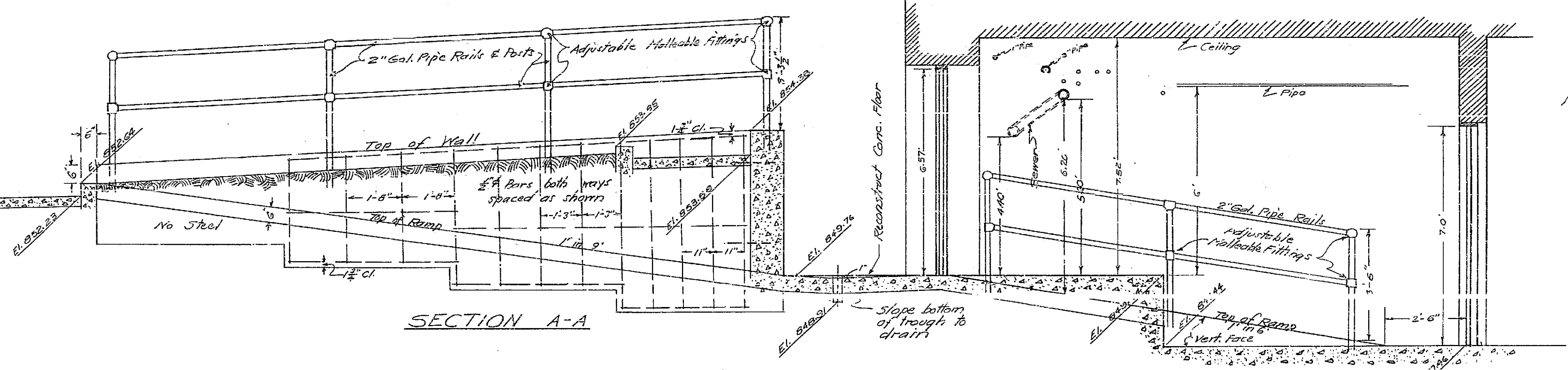
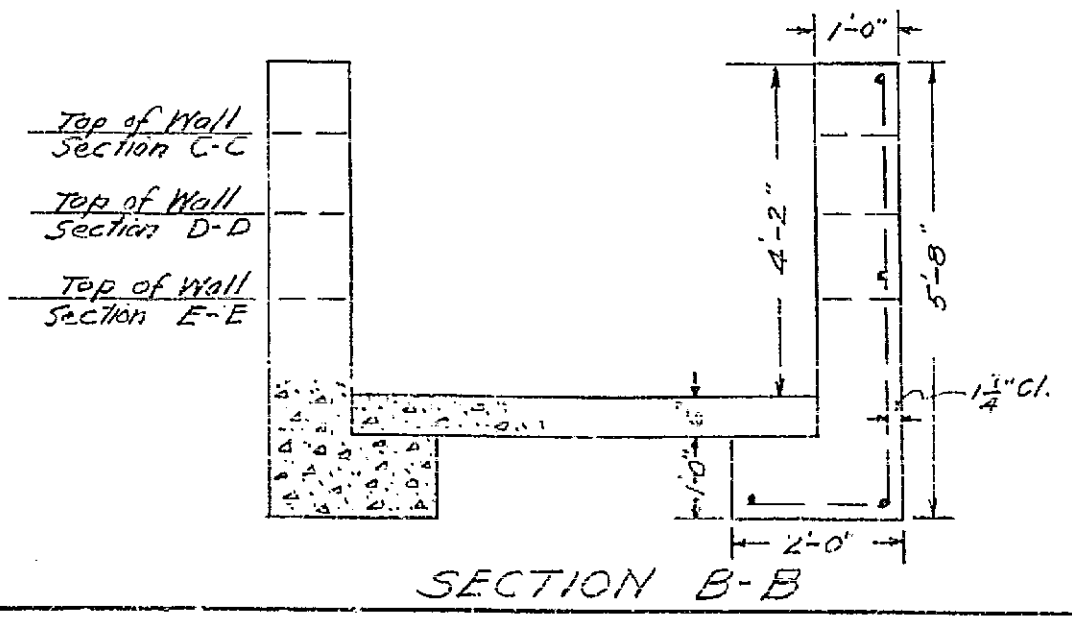
STREET  
 ORANGE

SCALE: 1" = 2'



Valve (Gas Co.)

NOTE: All concrete to be Class 'A'



SECTION A-A

SECTION B-B

551H  
 E.B. A/G2