
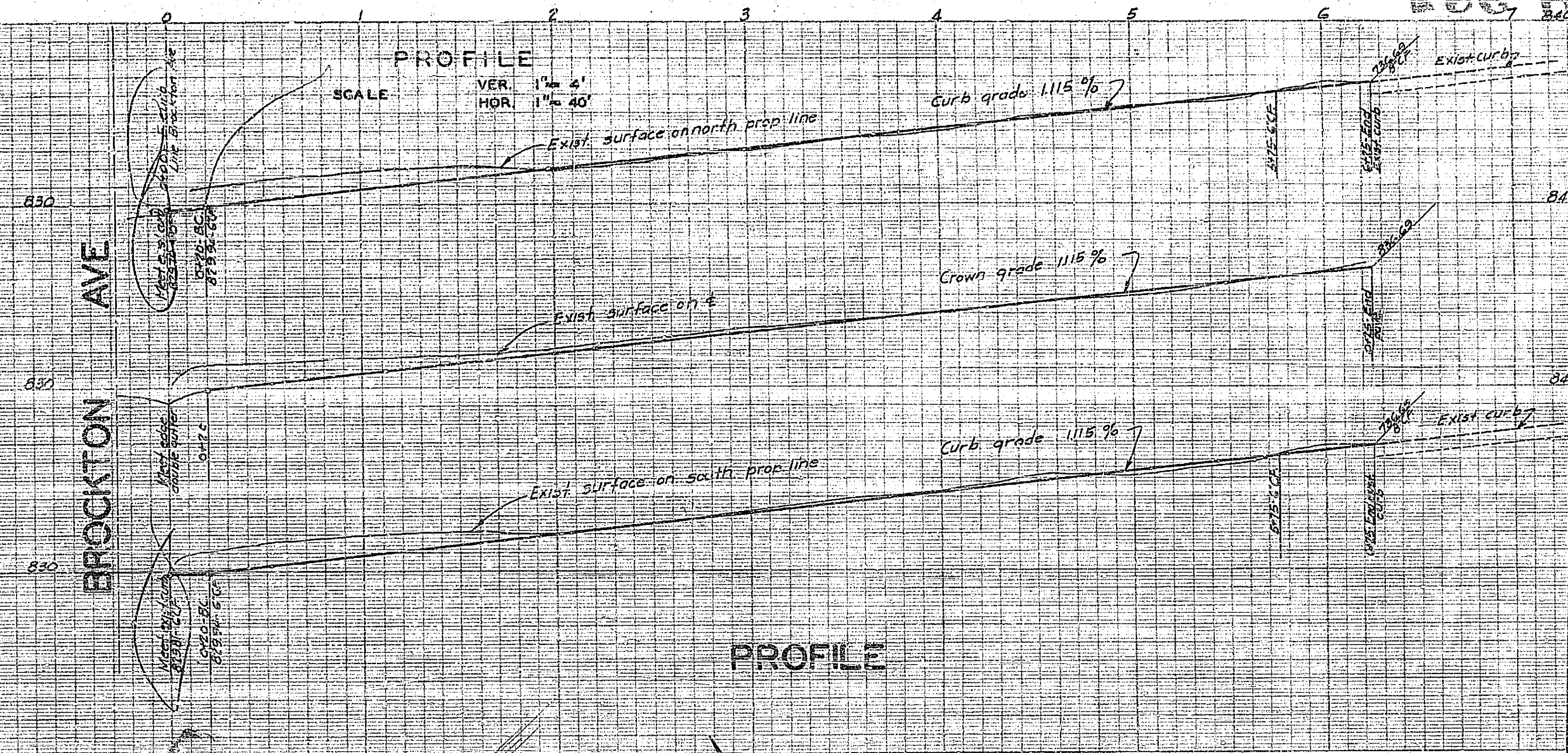


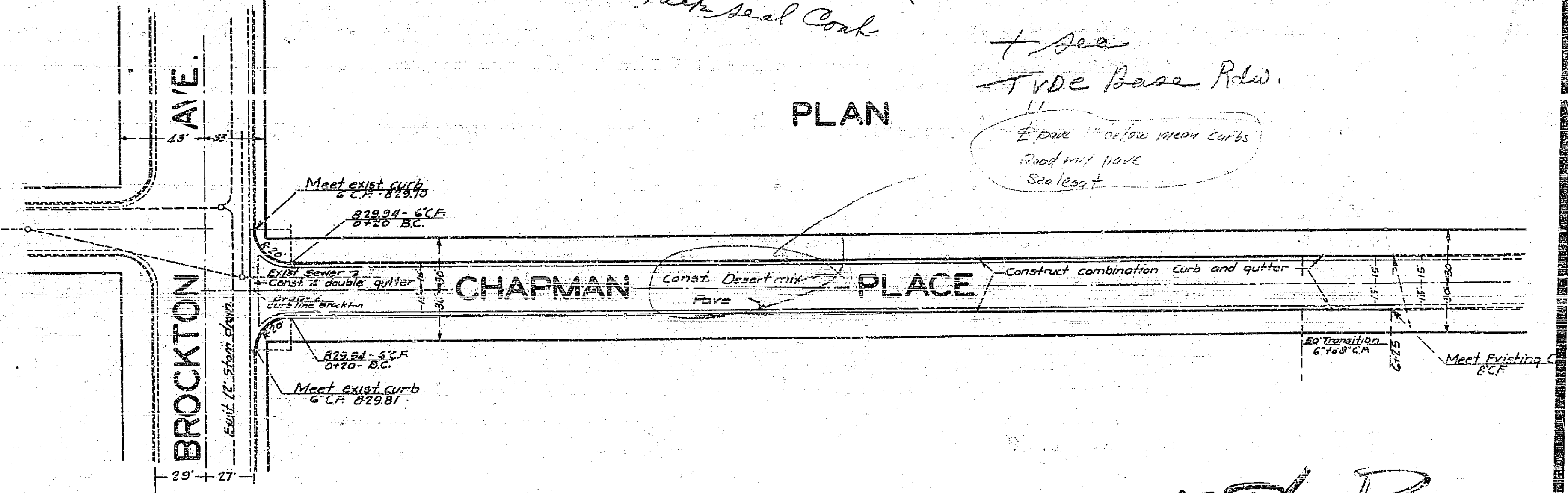
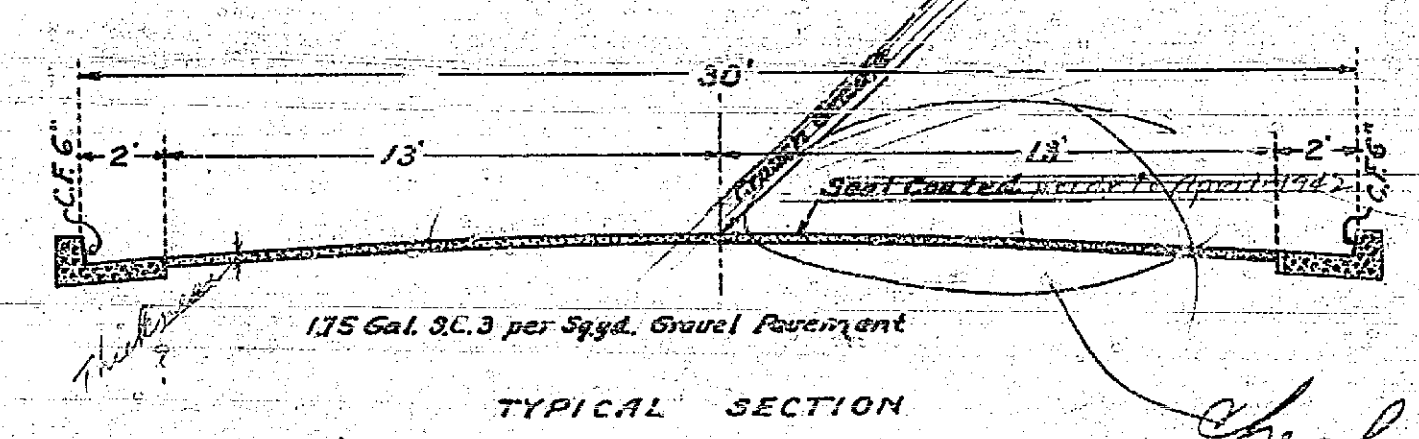
280-B

CHAPMAN PLACE BROCKTON AVE. TO EXISTING IMPROVEMENT			
DRAWING NUMBER	SHEET NUMBER	TOTAL SHEETS	FIELD BOOK
586-B	1	1	301-1908
DRAWN BY	CHECKED BY	APPROVED BY	
D.J.M.	Oct. 1941	 RE. 1312	



PLAN AND PROFILE
 OF THE PROPOSED IMPROVEMENT IN
CHAPMAN PLACE
 EASTERLY FROM BROCKTON AVE.

ENGINEERING DEPT. RIVERSIDE, CALIF. 1941.
 CITY (U.S.G.S.) DATUM PLANE
 FIELD BOOK 381 PAGES 51-53



Approved *Lauffel* City Engineer
 RE. 1312

Note: Const. as shown by A.C. Bussey
 Oct. 1941

+ see
 Tide Base Plan.
 11
 Expose 1" below mean curbs
 Road mit pave
 Seal coat.

Check seal coat

1-088

586 B-05