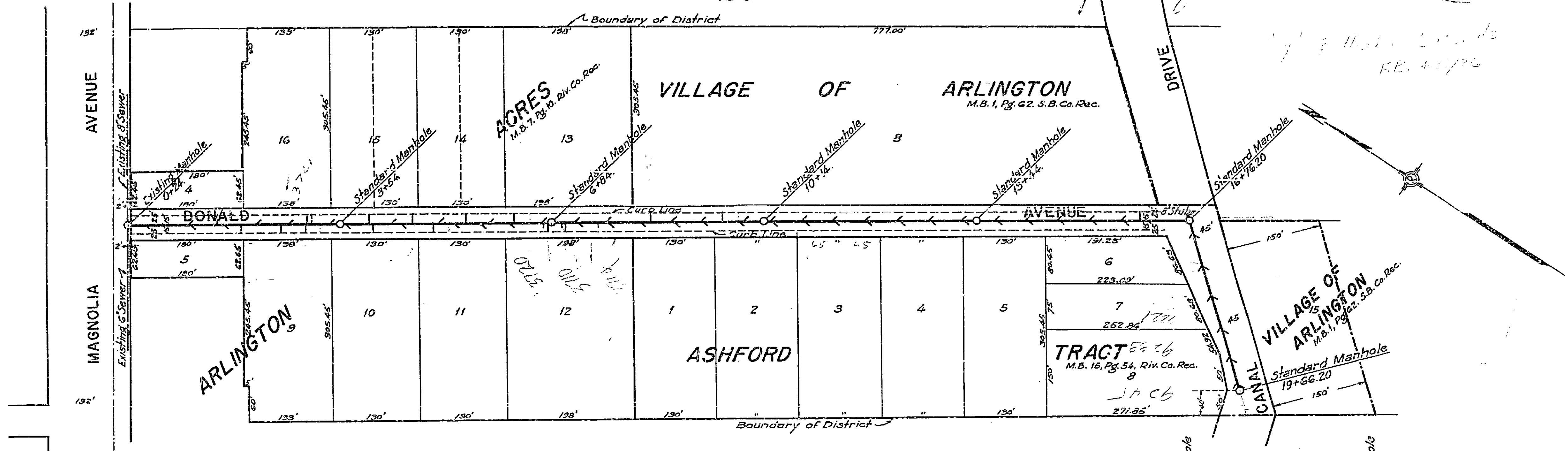


See Attachment Diagram for unit stations

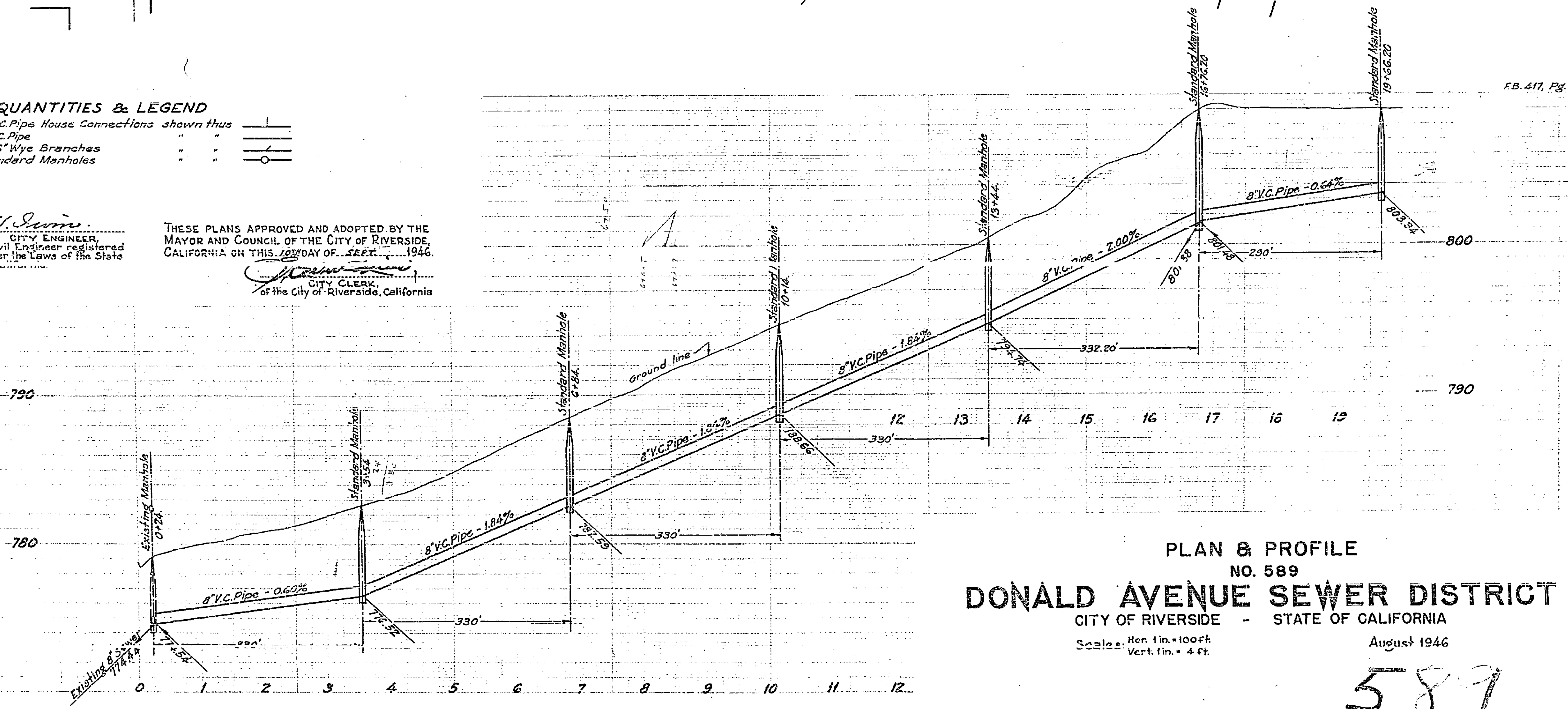


QUANTITIES & LEGEND

225 lin. ft. - 6" V.C. Pipe House Connections shown thus	
1852 " " - 8" V.C. Pipe	
73 - 8" x 6" Wye Branches	
6 - Standard Manholes	

APPROVED: *M. H. Swinn*
 CITY ENGINEER,
 a Civil Engineer registered
 under the Laws of the State
 of California.

THESE PLANS APPROVED AND ADOPTED BY THE
 MAYOR AND COUNCIL OF THE CITY OF RIVERSIDE,
 CALIFORNIA ON THIS 10TH DAY OF SEPT 1946.
M. H. Swinn
 CITY CLERK,
 of the City of Riverside, California



PLAN & PROFILE
 NO. 589
DONALD AVENUE SEWER DISTRICT
 CITY OF RIVERSIDE - STATE OF CALIFORNIA
 Scales: Hor. 1 in. = 100 ft.
 Vert. 1 in. = 4 ft.
 August 1946

589