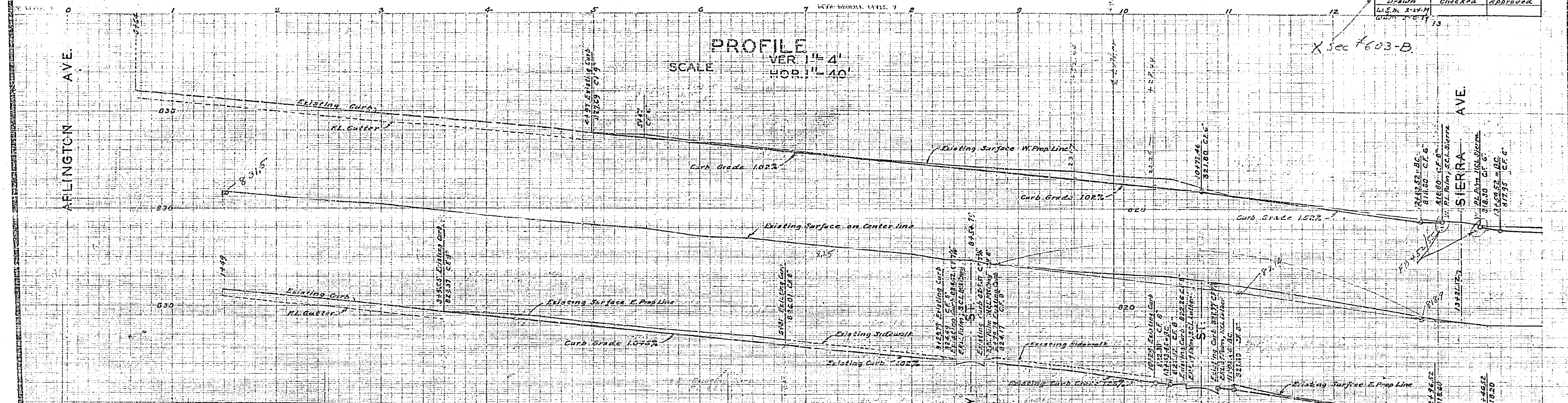


PALM AVENUE MAGNOLIA AV. TO CENTRAL AV.			
Drawing Number	Sheet Number	Total Sheets	Field Book
G03	1	2	327
Drawn	Checked	Approved	
W.E.H. 2-24-M			



PLANS AND PROFILES
OF THE PROPOSED IMPROVEMENT OF

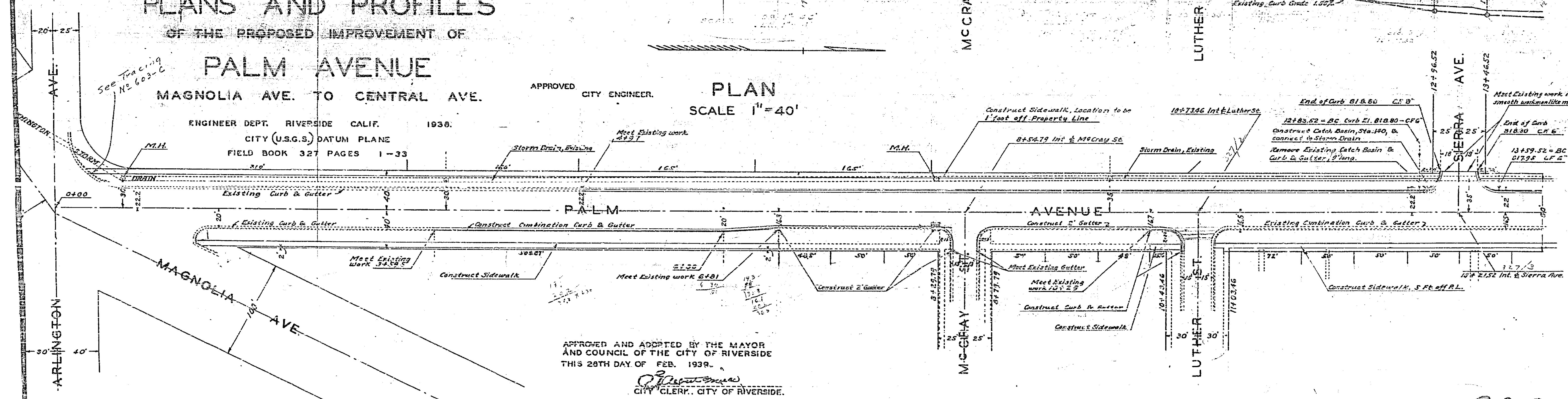
PALM AVENUE

MAGNOLIA AVE. TO CENTRAL AVE.

PLAN
SCALE 1" = 40'

APPROVED CITY ENGINEER.

ENGINEER DEPT. RIVERSIDE CALIF. 1938.
CITY (U.S.G.S.) DATUM PLANE
FIELD BOOK 327 PAGES 1-33

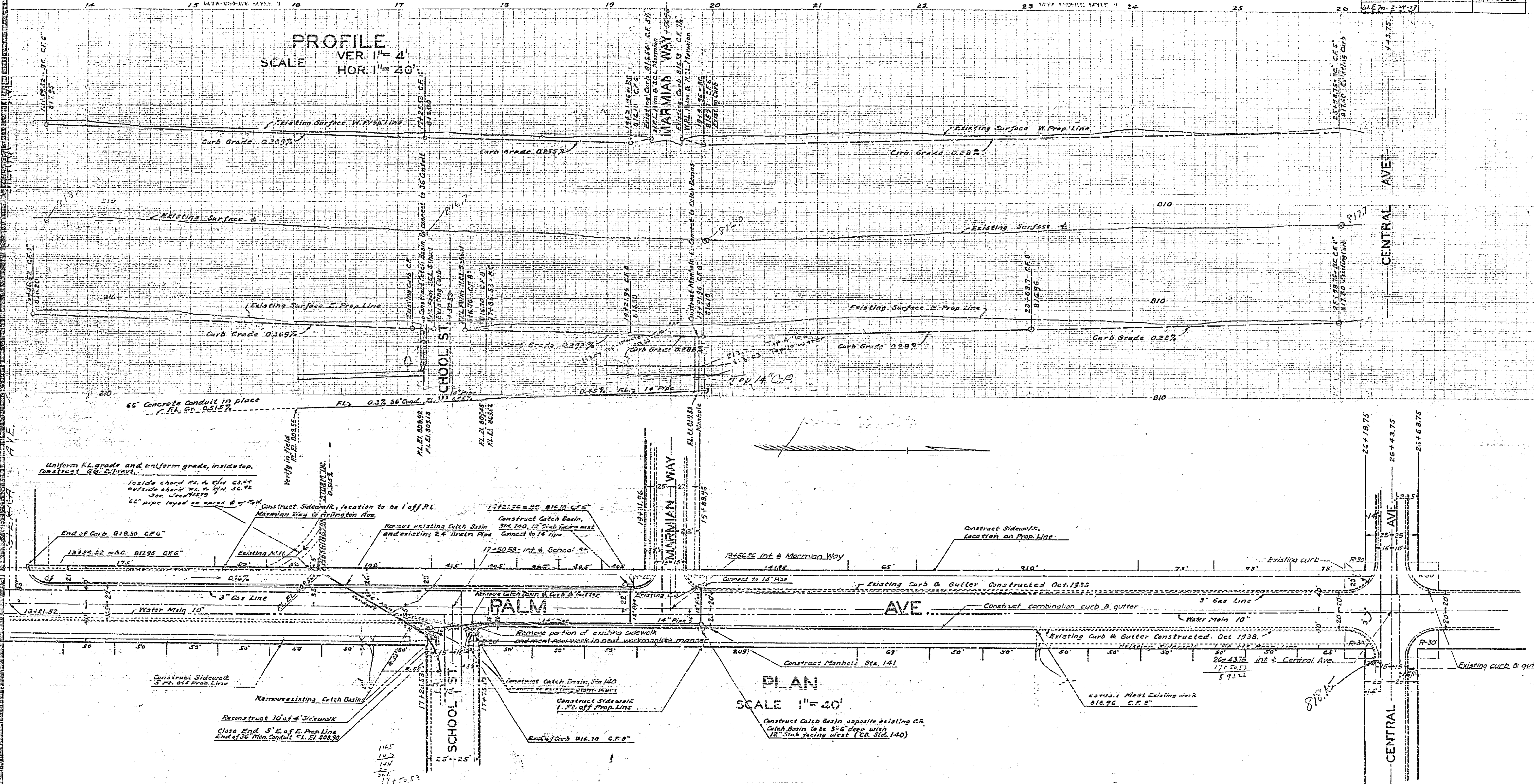


APPROVED AND ADOPTED BY THE MAYOR
AND COUNCIL OF THE CITY OF RIVERSIDE
THIS 28TH DAY OF FEB. 1938.

[Signature]
CITY CLERK, CITY OF RIVERSIDE.

603

MAGNOLIA AV TO CENTRAL AV			
Drawing Number	Sheet Number	Total Sheets	Field Book
603	2	2	327
Drawn	Checked	Approved	



603