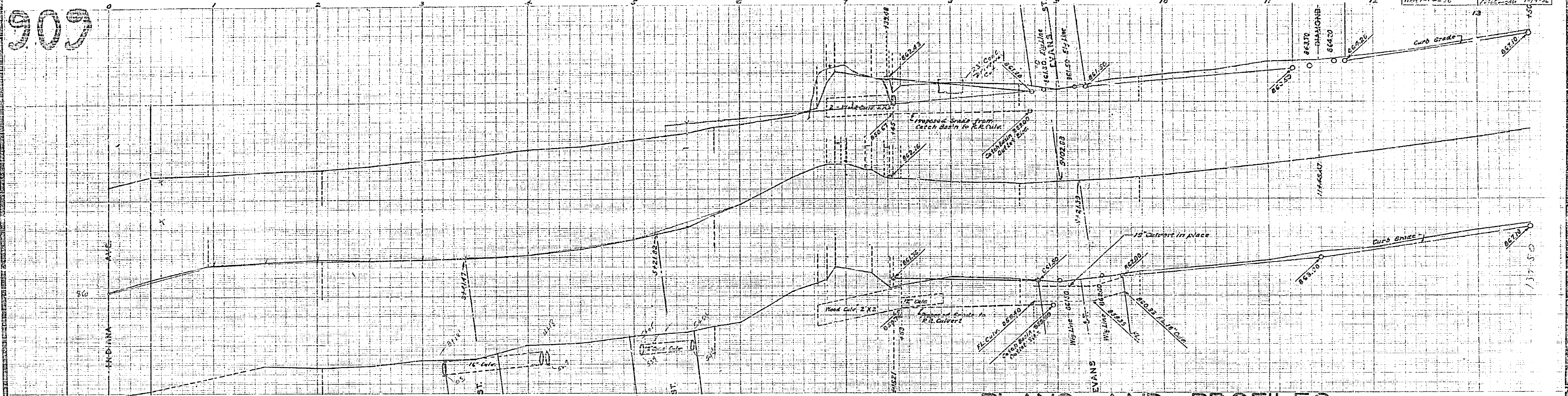


909

SANTA FE R.R. TO LINCOLN AVENUE	
Drawing No. 666	Sheet No. 1
Checked	Checked
WPA 1-1-36	WPA 1-1-36



PLANS AND PROFILES

OF THE PROPOSED IMPROVEMENT OF

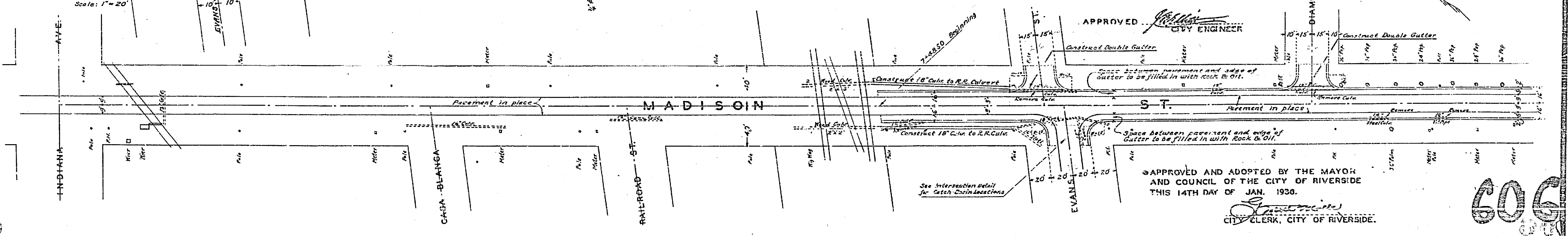
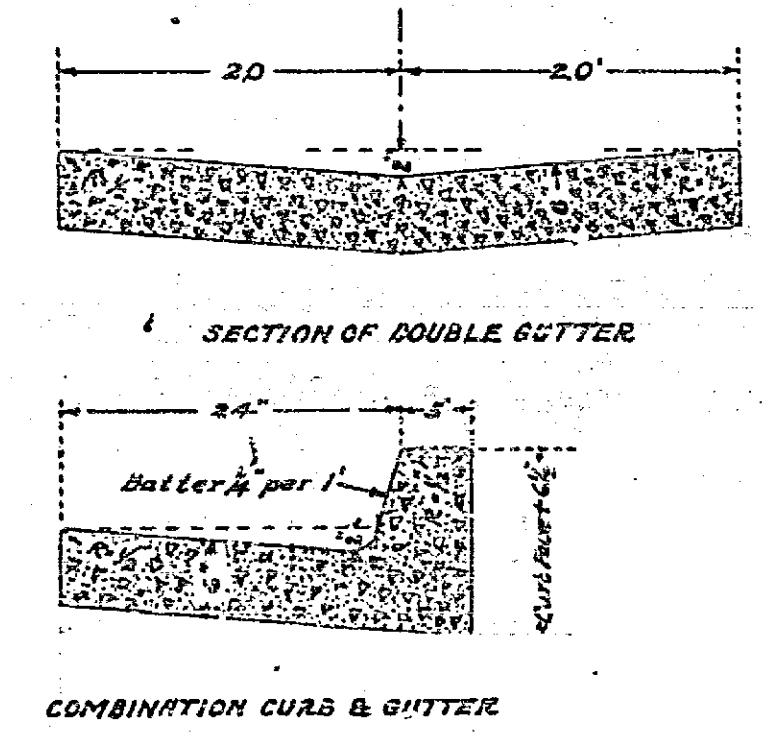
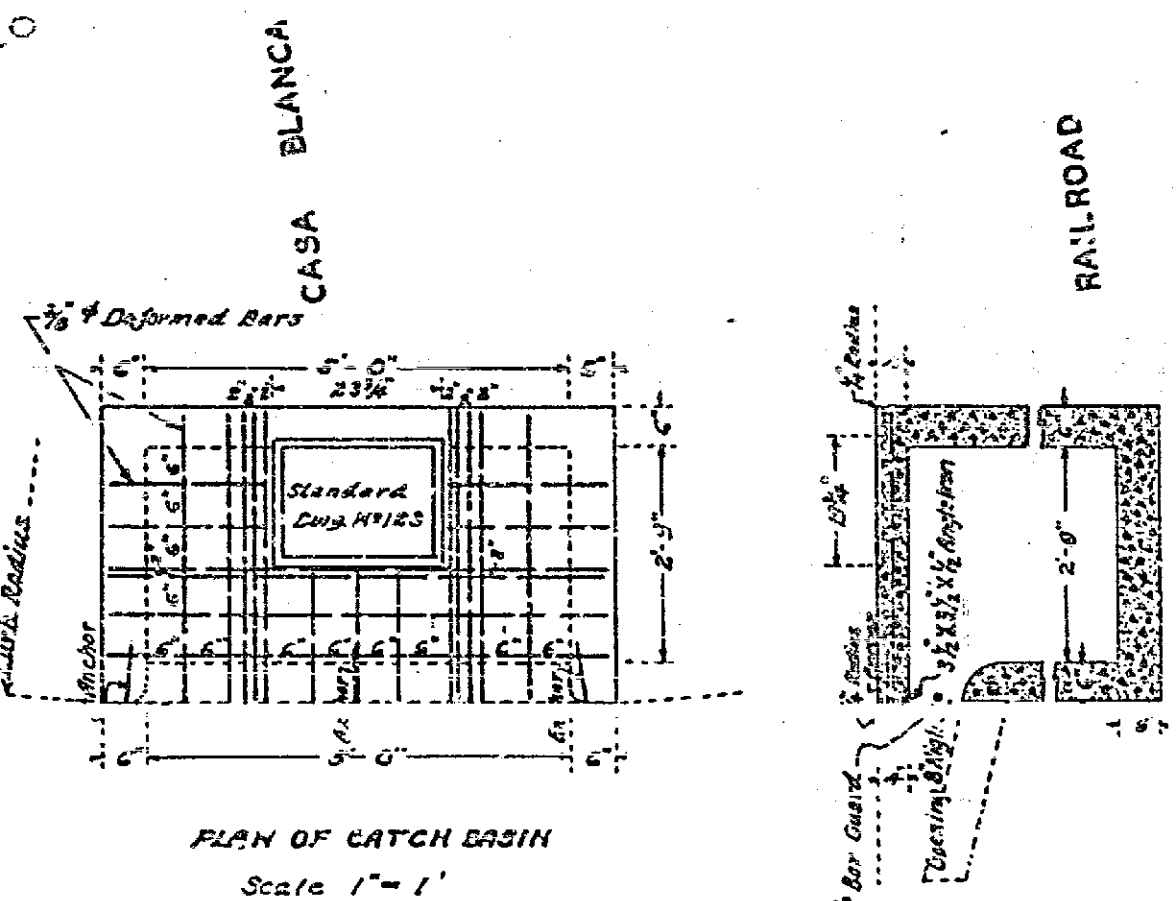
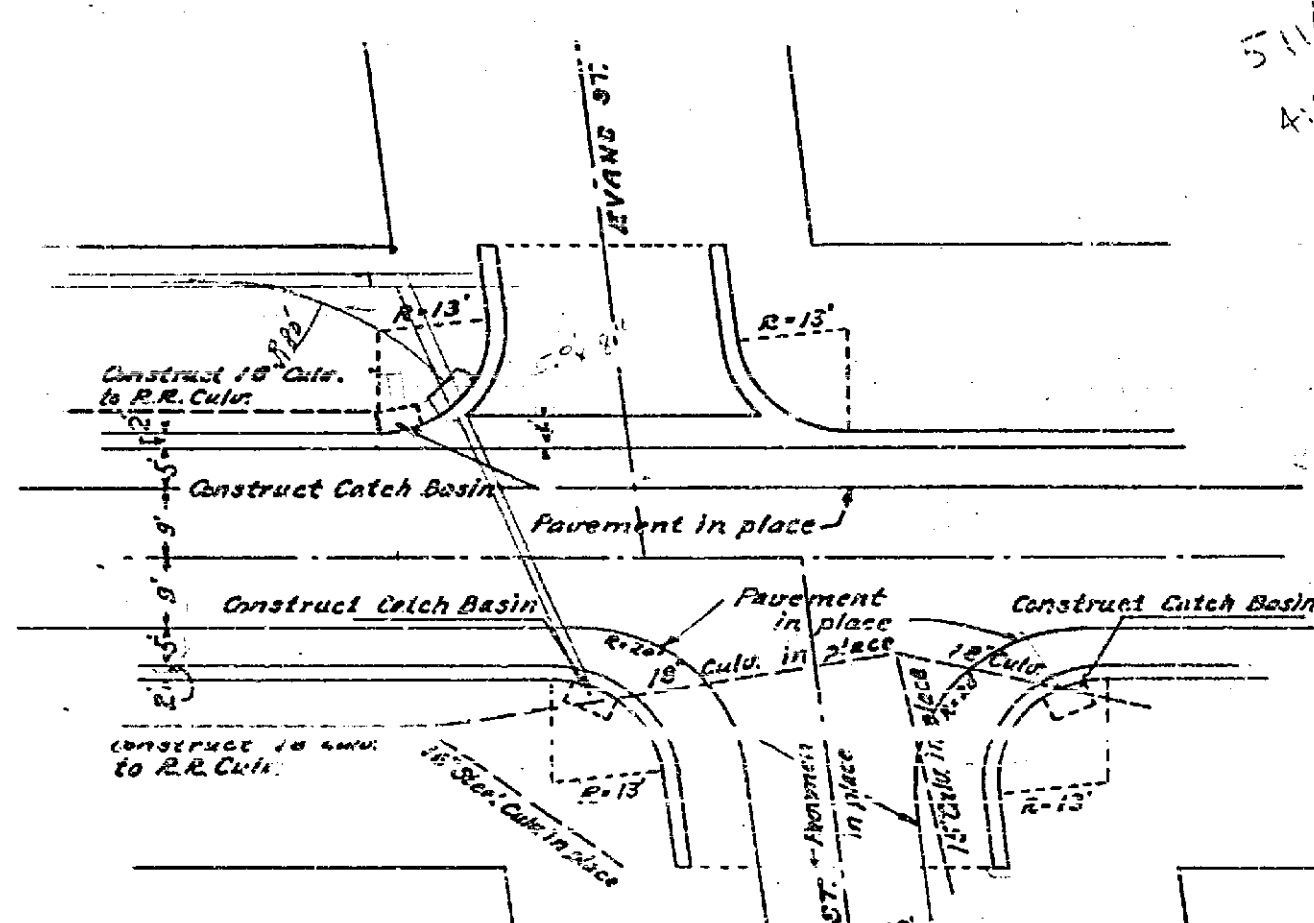
MADISON STREET

BETWEEN SANTA FE R.R. & LINCOLN AVE.
 ENG DEPT. RIVERSIDE CALIF. 1936.

CITY (U. S. G.S.) DATUM PLANE

FIELD BOOK 324	PAGES 58-79	Constructed by Street Dept. 1936. WPA Labor
" " 323	" 59-79	
" " 317	" 15-18	

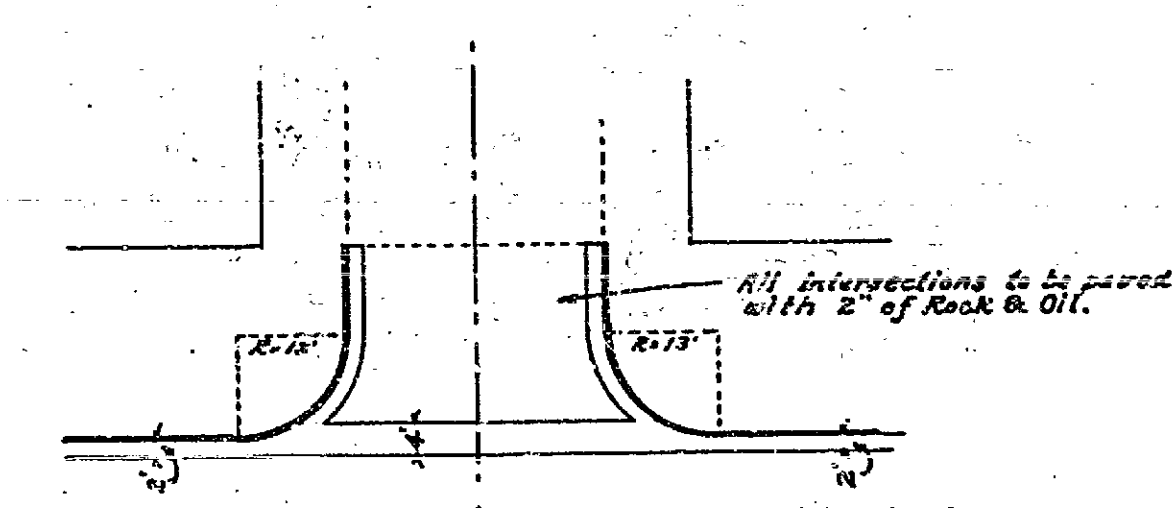
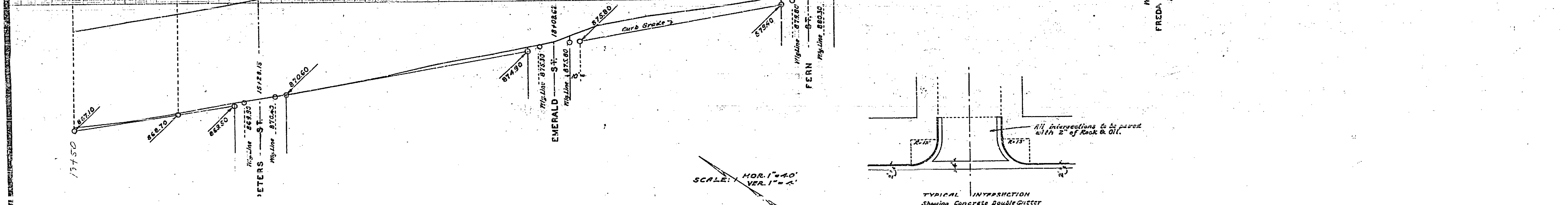
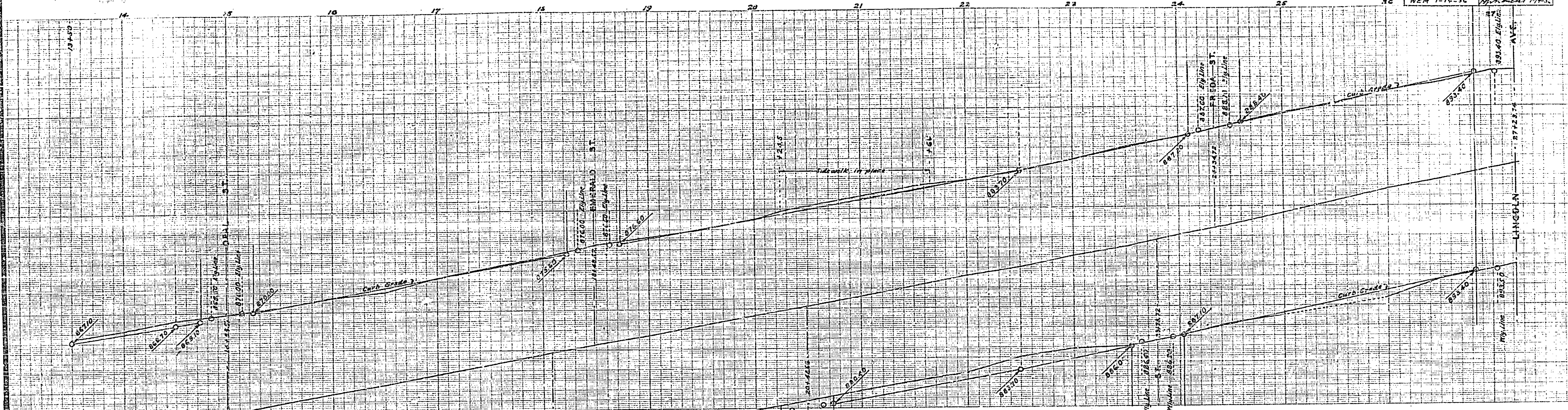
SCALE: HOR 1" = 40'
 VER. 1" = 4'



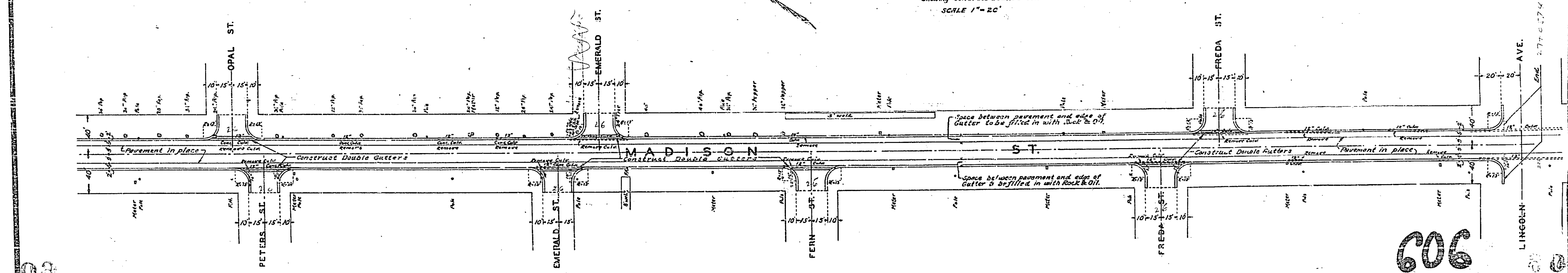
APPROVED AND ADOPTED BY THE MAYOR AND COUNCIL OF THE CITY OF RIVERSIDE THIS 14TH DAY OF JAN. 1936.

CITY CLERK, CITY OF RIVERSIDE.

606



SCALE: HOR. 1" = 40'
 VER. 1" = 4'



606