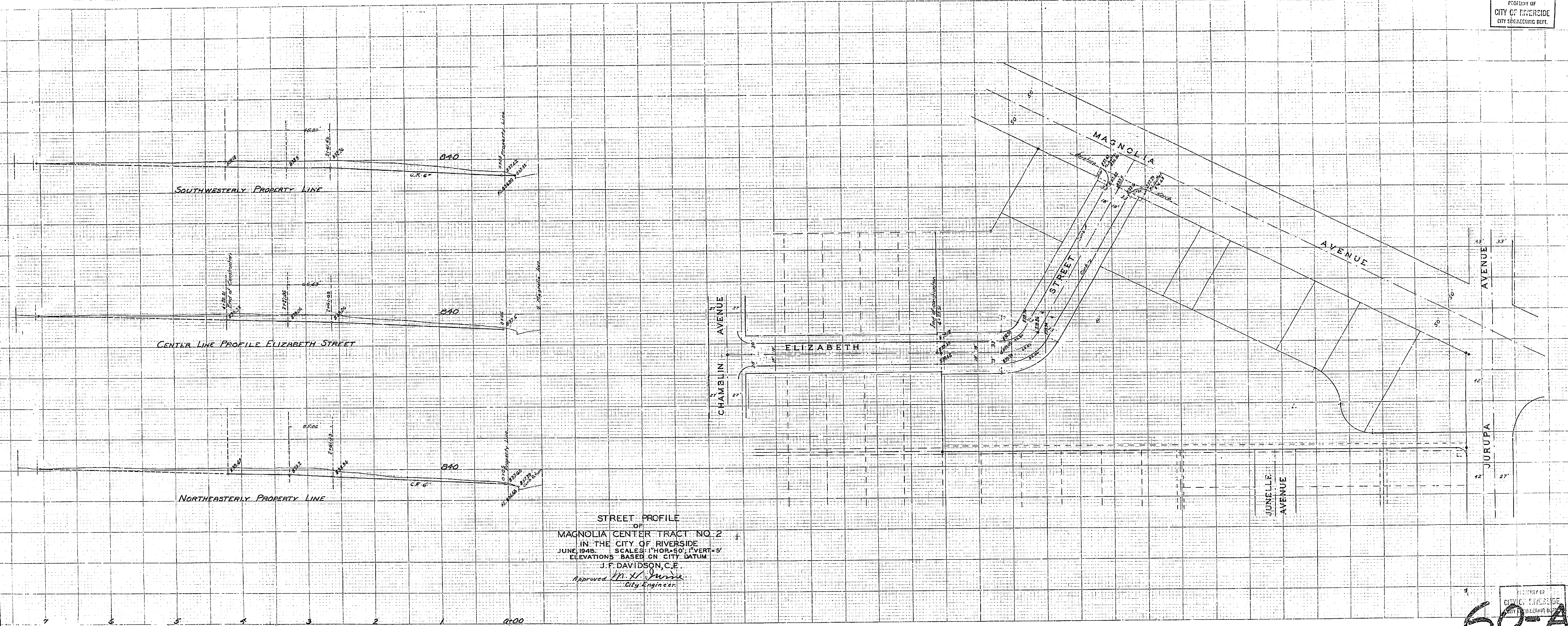


1/16" = 1' HORIZ.  
1/8" = 5' VERT.

1/16" = 1' HORIZ.  
1/8" = 5' VERT.

1/16" = 1' HORIZ.  
1/8" = 5' VERT.

PROPERTY OF  
CITY OF RIVERSIDE  
CITY ENGINEERING DEPT.



STREET PROFILE  
OF  
MAGNOLIA CENTER TRACT NO. 2  
IN THE CITY OF RIVERSIDE  
JUNE, 1948. SCALES: 1" HORIZ. = 60'; 1" VERT. = 5'  
ELEVATIONS BASED ON CITY DATUM  
J. F. DAVIDSON, C.E.  
Approved: *M. H. [Signature]*  
City Engineer

60-A