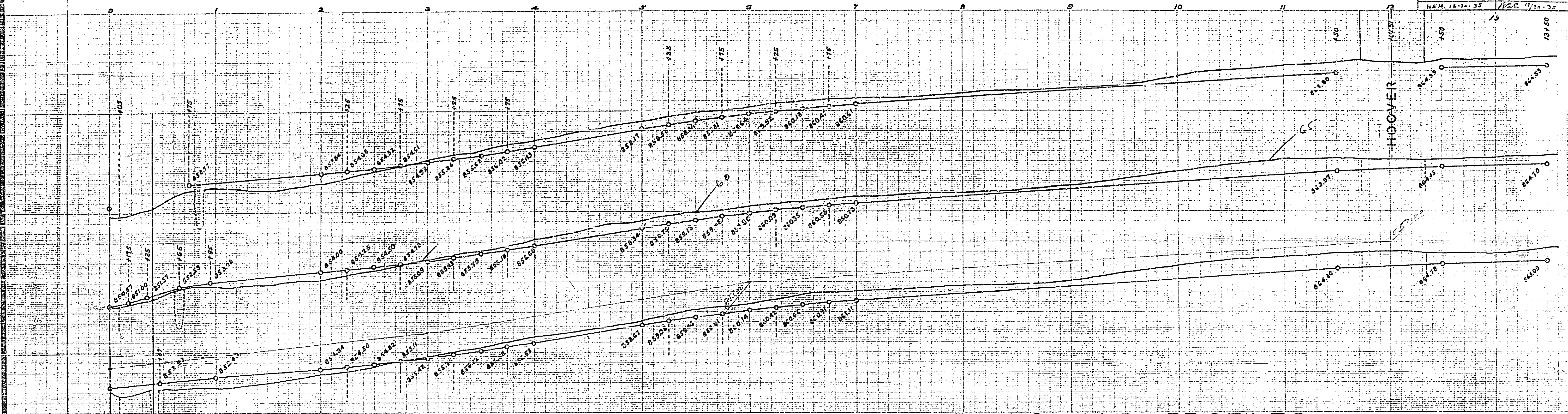


INDIANA AVENUE	
MADISON ST. TO	WASHINGTON ST.
Drawing No. 610	Sheet No. 201
Plotted	Checked
HEM. 12-10-35	VRC. 11/20-35



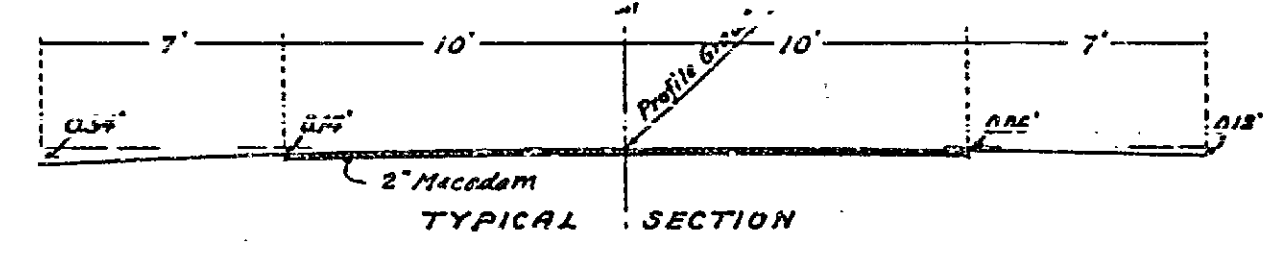
# PLANS AND PROFILES

## OF THE PROPOSED IMPROVEMENT OF

### INDIANA AVENUE

BETWEEN MADISON ST. & WASHINGTON ST.  
 ENG. DEPT. RIVERSIDE CALIF. 1936.

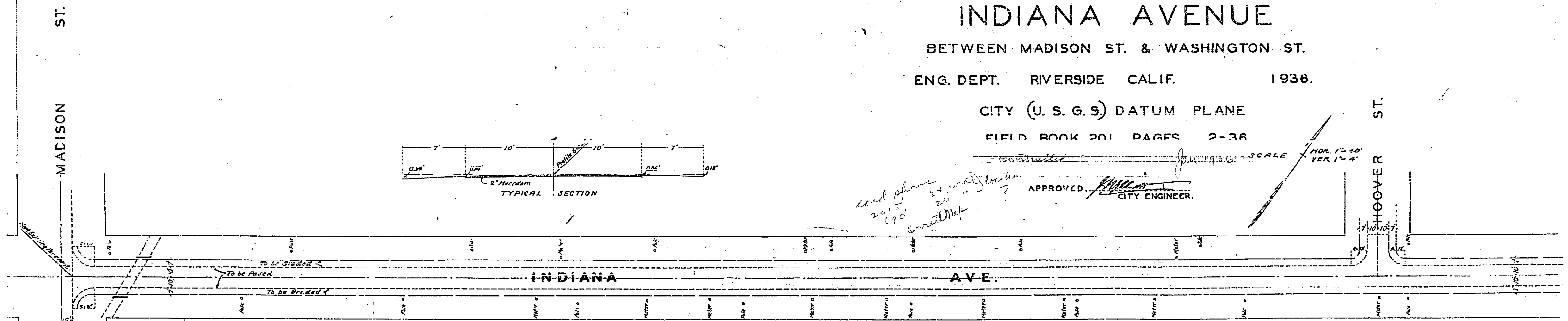
CITY (U. S. G. S) DATUM PLANE  
 FIELD BOOK 201 PAGES 2-36



*and show  
 2015  
 190  
 24' wide  
 20' wide  
 Street Map*

APPROVED: *[Signature]*  
 CITY ENGINEER.

SCALE  
 HOR. 1"=40'  
 VER. 1"=4'

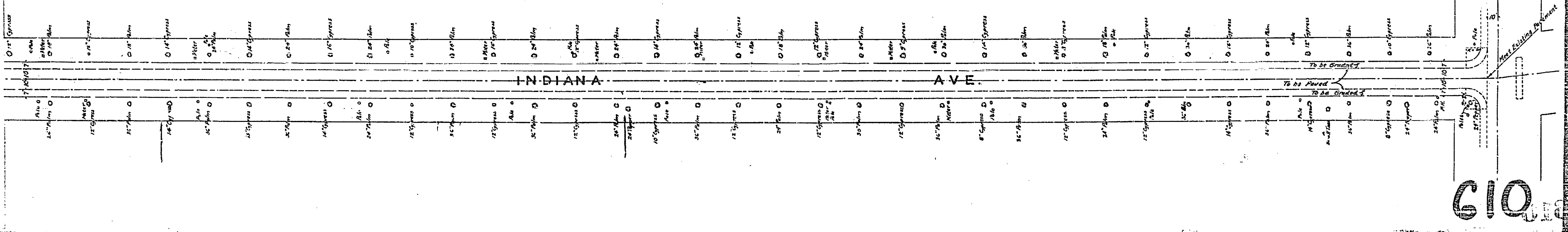
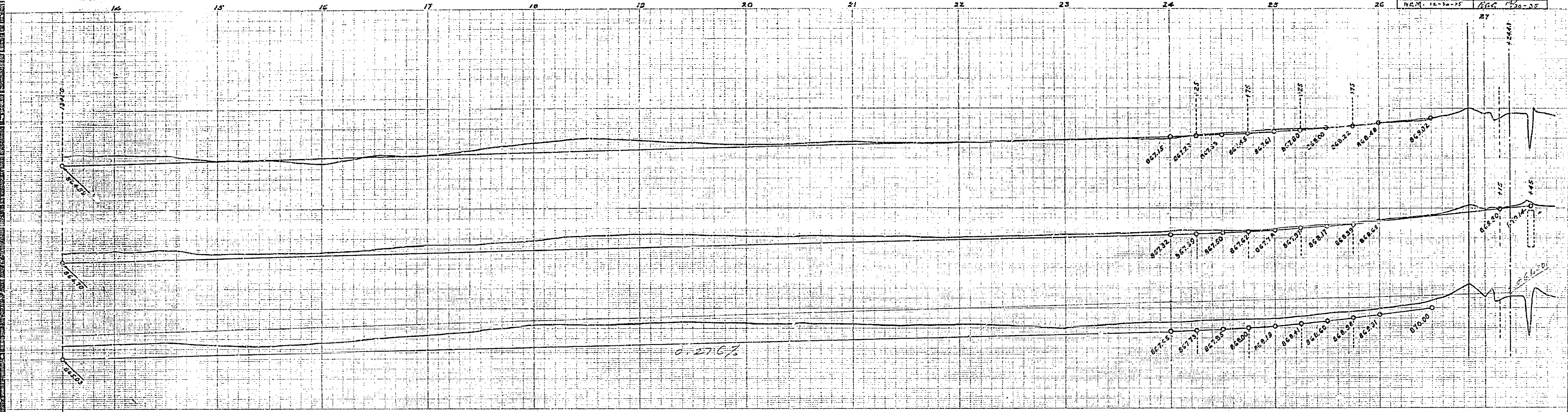


APPROVED AND ADOPTED BY THE MAYOR  
 AND COUNCIL OF THE CITY OF RIVERSIDE  
 THIS 7TH DAY OF JAN. 1936.

*[Signature]*  
 CITY CLERK, CITY OF RIVERSIDE.

610

INDIANA WYANUS			
MADISON ST TO WASHINGTON ST			
Drawing No	Sheet No	Total Sheets	Field Book
610	2	2	201
Plotted		Checked	
R.G.G.		R.G.G.	



610