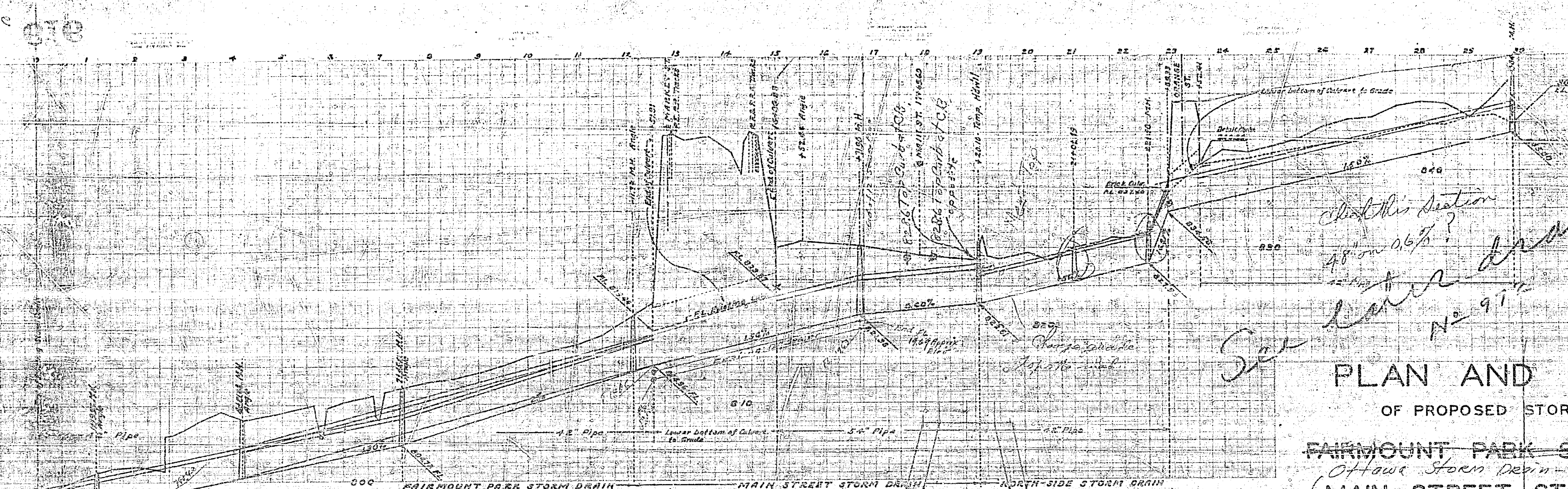
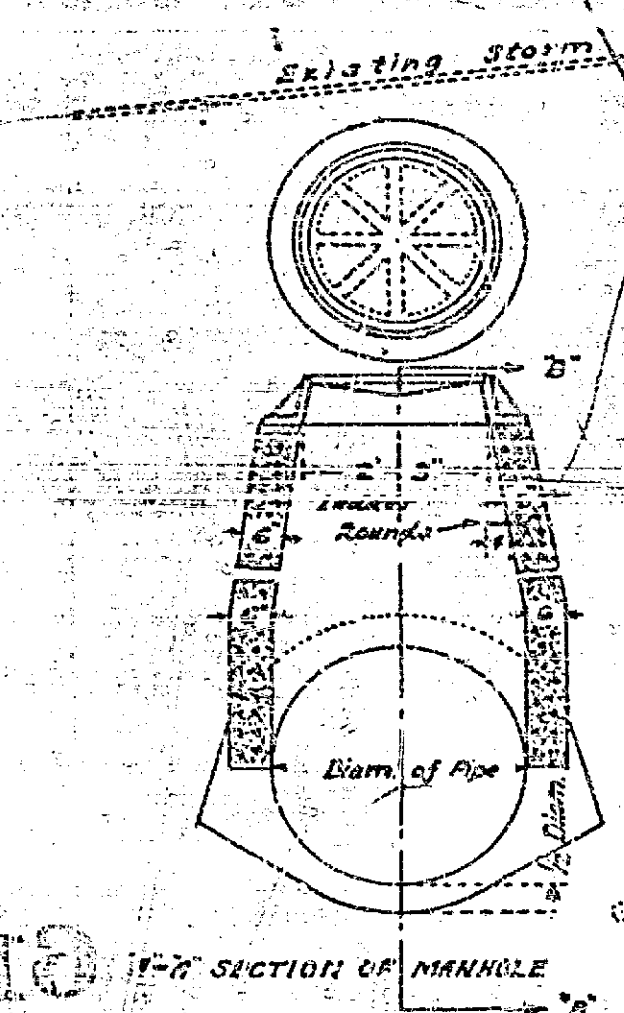
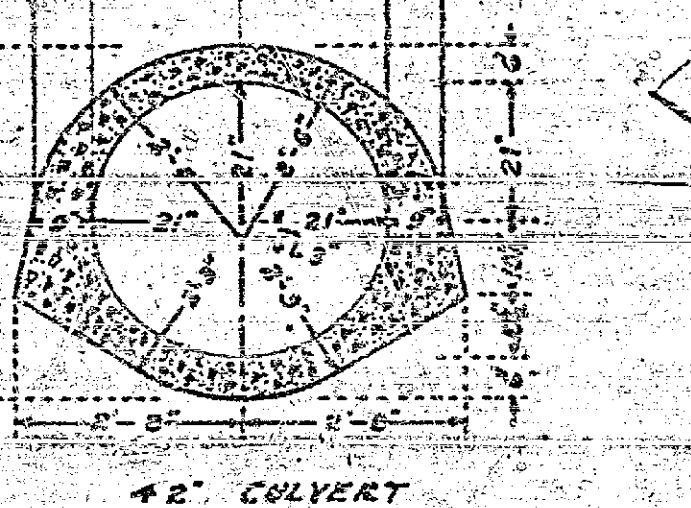
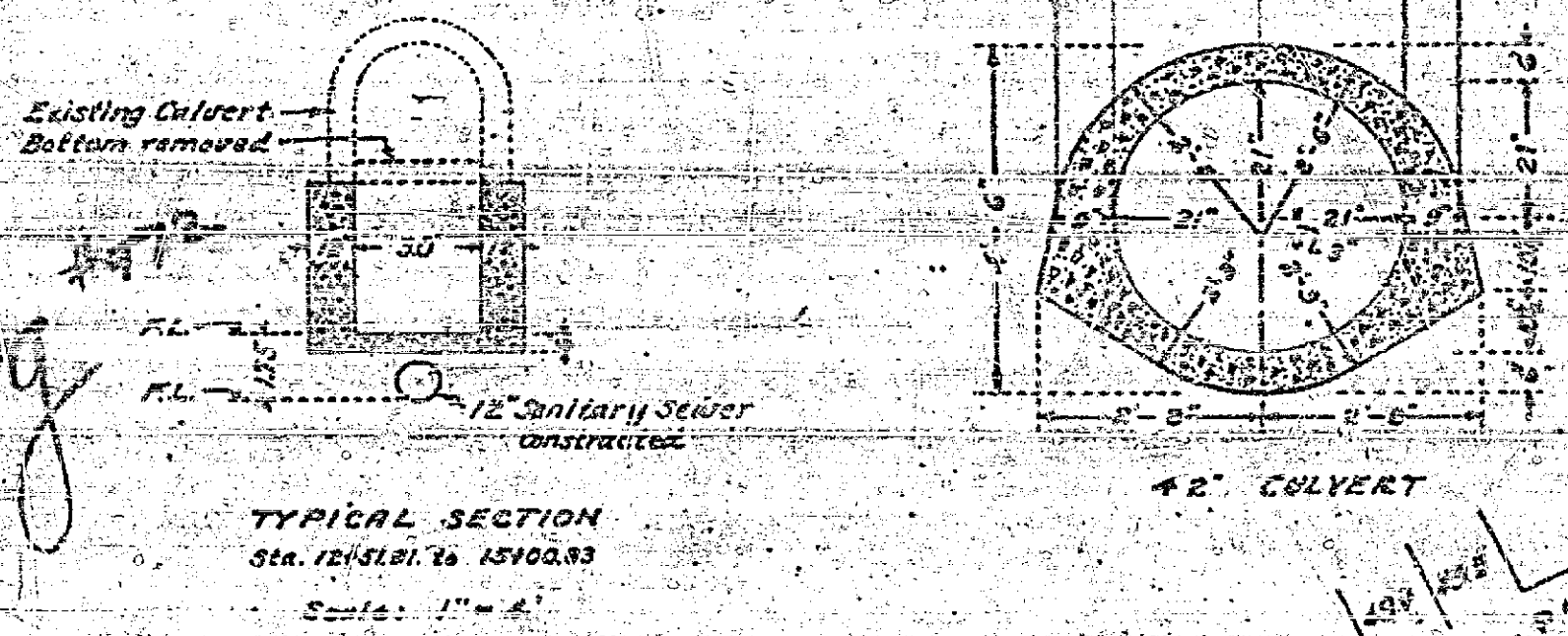
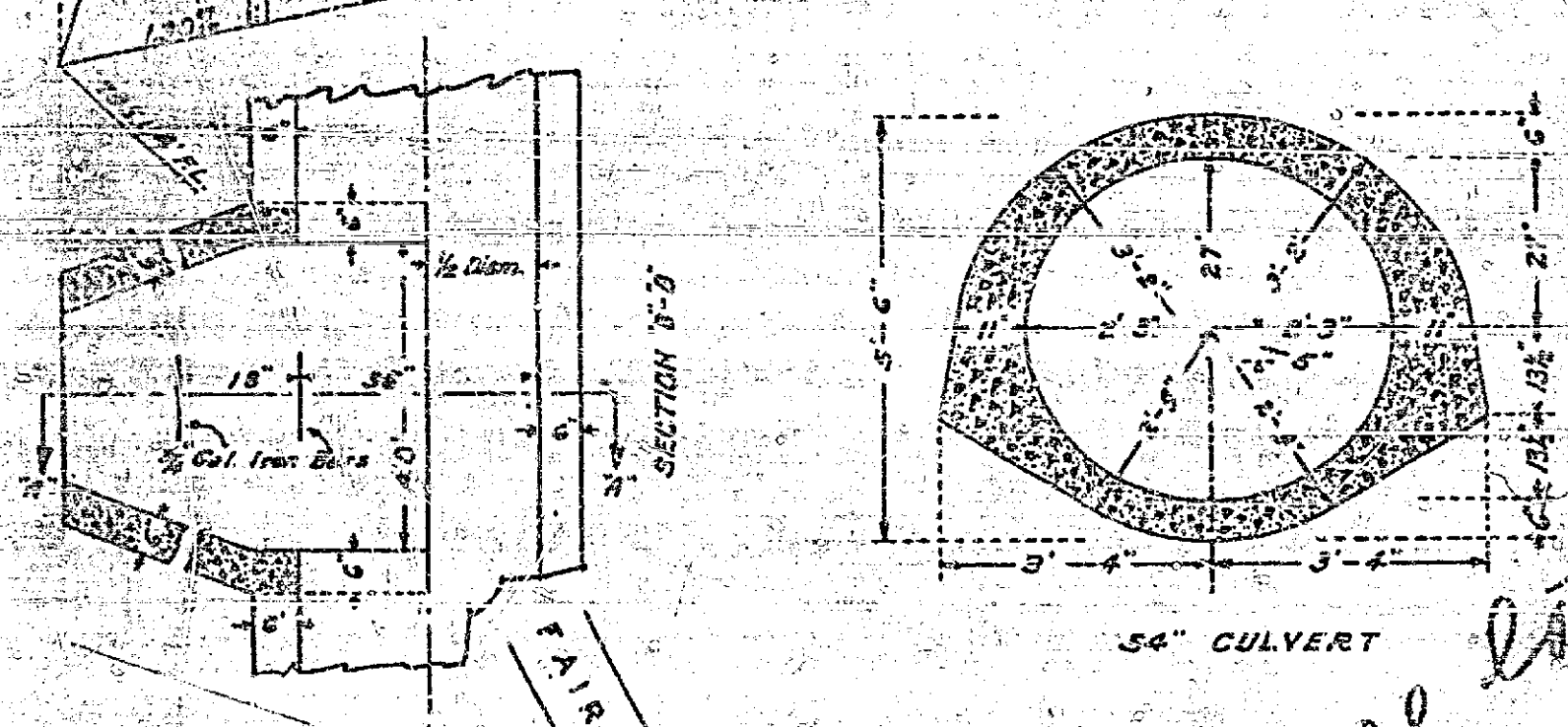


STORM DRAIN	
Drawing No. 100	Sheet No. 1
City of Riverside	1936
Checked	1/20/36



*Check this section
48" on 0.6%
later drawing
No. 91*

PLAN AND PROFILE
OF PROPOSED STORM DRAINS
FAIRMOUNT PARK STORM DRAIN
Offshore Storm Drain - Main St. to Market St.
(MAIN STREET STORM DRAIN)
AND PORTION OF
NORTH-SIDE STORM DRAIN



ENGINEER DEPT. RIVERSIDE, CALIF. 1936
CITY (U.S.G.S.) DATUM PLANE
FIELD BOOK 318 PAGES 78
" 328 " 54, 41
Original Detail 1123-D
APPROVED *[Signature]*
CITY ENGINEER

APPROVED AND ADOPTED BY THE MAYOR
AND COUNCIL OF THE CITY OF RIVERSIDE
THIS 17TH DAY OF MARCH, 1936.
[Signature]
CITY CLERK, CITY OF RIVERSIDE

all later drawing

Constructed in 1926
by Street Dept. WPA Labor
STREET STORM DRAIN