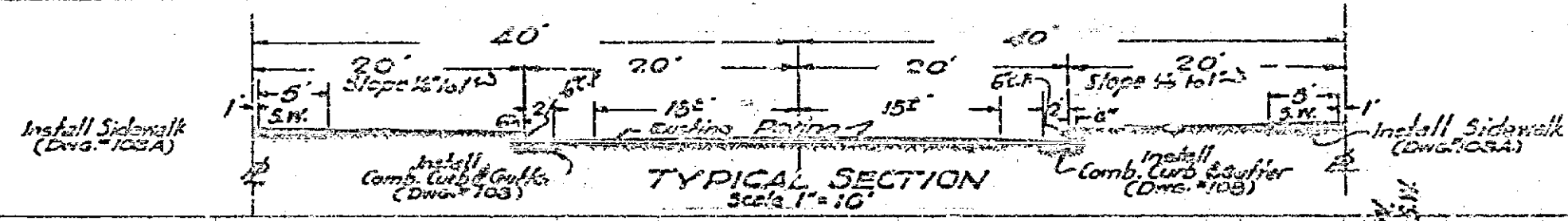
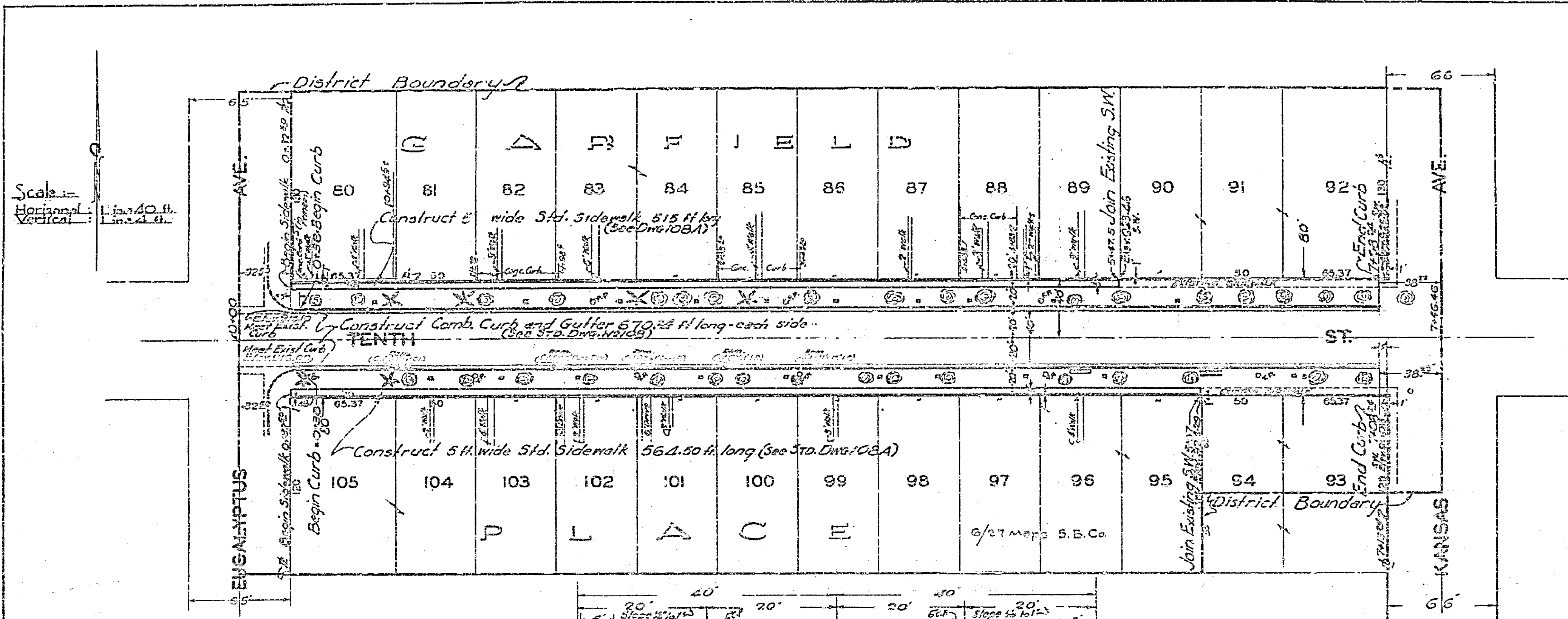


PLAN & PROFILE  
 - No 639 -  
 FOR THE CONSTRUCTION OF  
**CURBS & GUTTERS AND SIDEWALKS ON**  
**TENTH ST**  
 BETWEEN  
**EUCALYPTUS AVE AND KANSAS AVE**  
 CITY OF RIVERSIDE

Approved *M. H. Swint*  
 Registered Civil Eng.  
 No. 201  
 CITY ENGINEER

These PLANS Approved and Adopted by  
 the Mayor and Council of the City of  
 RIVERSIDE - STATE of CALIFORNIA  
 this \_\_\_ day of \_\_\_ 1928

CITY CLERK



F.B. 458-1

