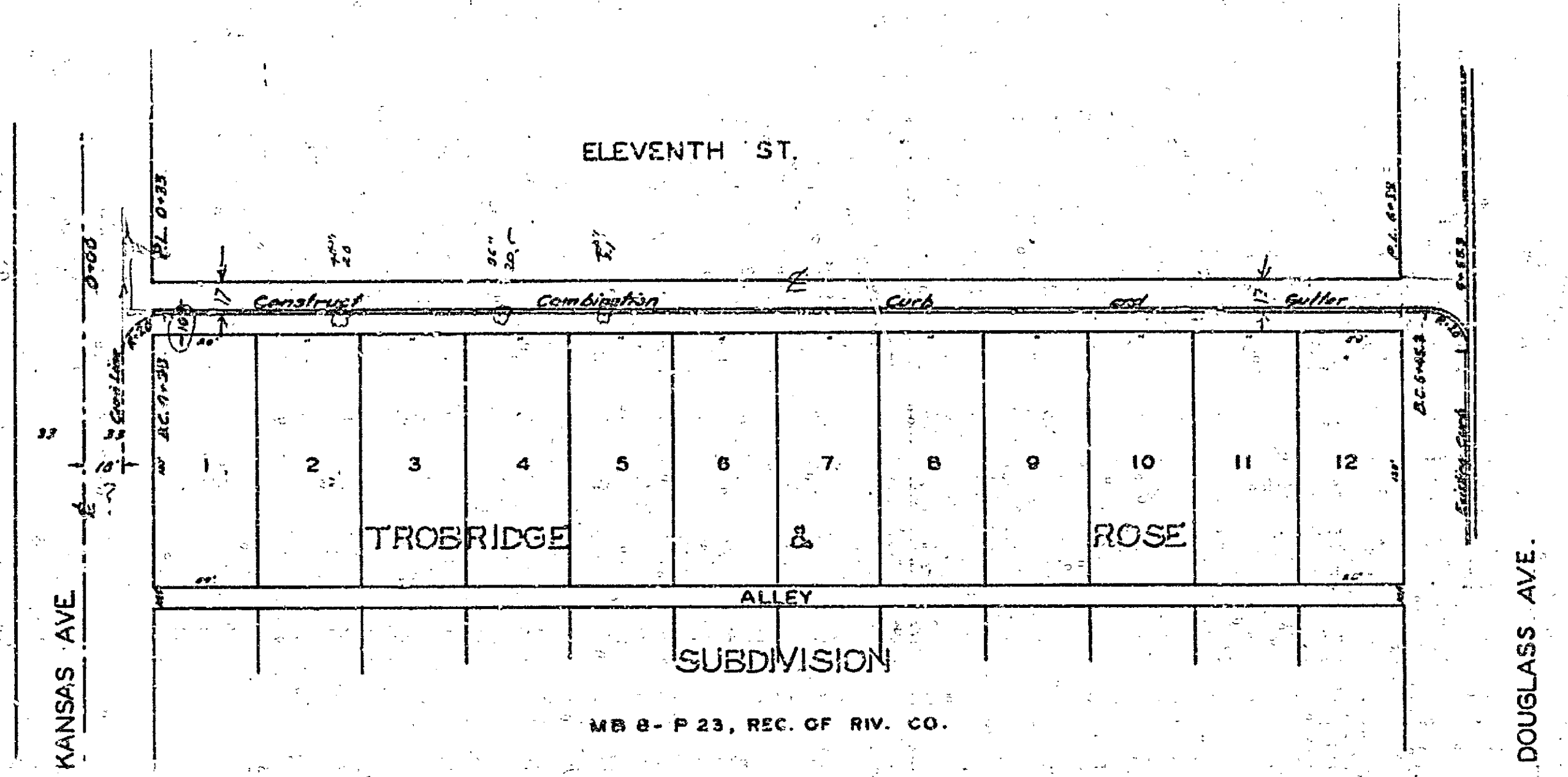
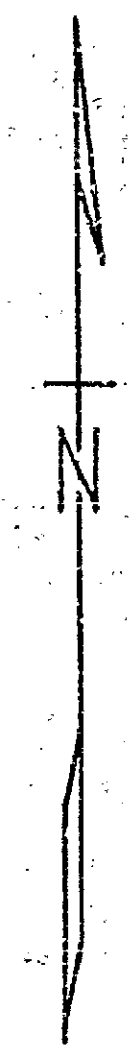


PLAN	DATE	BY
REVISED		
NOTED		
BY		
DATE		



PLAN AND PROFILE NO. 643
 FOR THE CONSTRUCTION OF CONCRETE
 COMBINATION CURBS AND GUTTERS
 ON THE SOUTH SIDE OF
ELEVENTH STREET
 AND ON THE NORTH SIDE OF
TWELFTH STREET
 BOTH BETWEEN KANSAS AND DOUGLASS AVENUES
 AND ON BOTH SIDES OF
TWELFTH STREET
 BETWEEN HIGH AND MARIPOSA STREETS

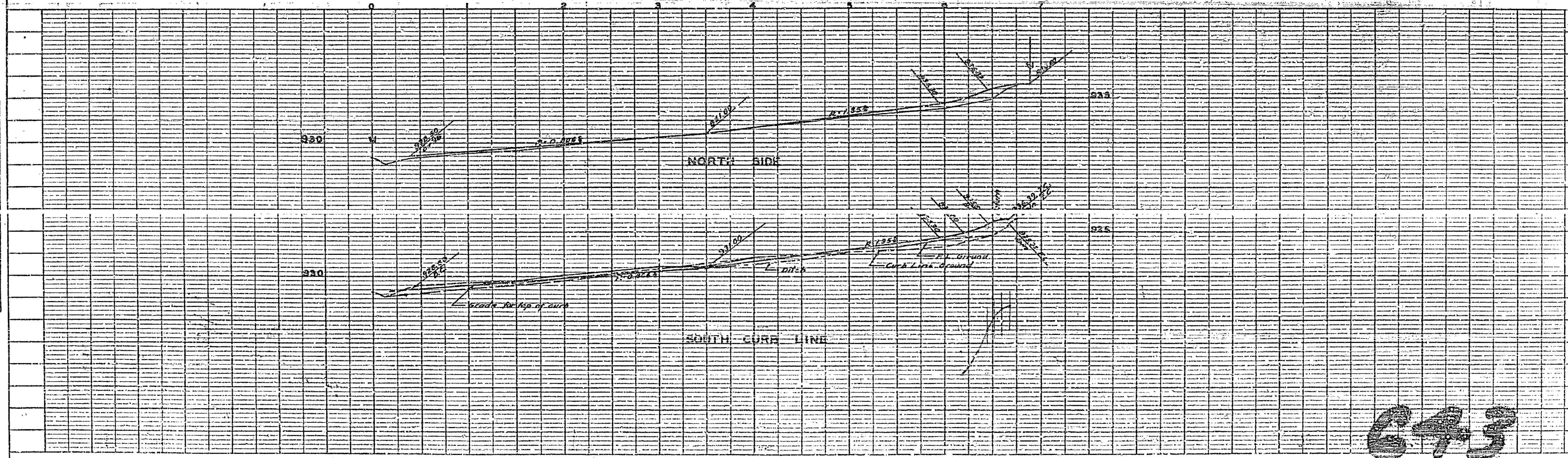
FS. 462-66,68,73 SCALES HOR. 1 IN. = 50 FT.
 VERT. 1 IN. = 5 FT.

APPROVED *M. H. Irvine*
 M. H. IRVINE, REG. C.E. N. 3011
 CITY ENGINEER

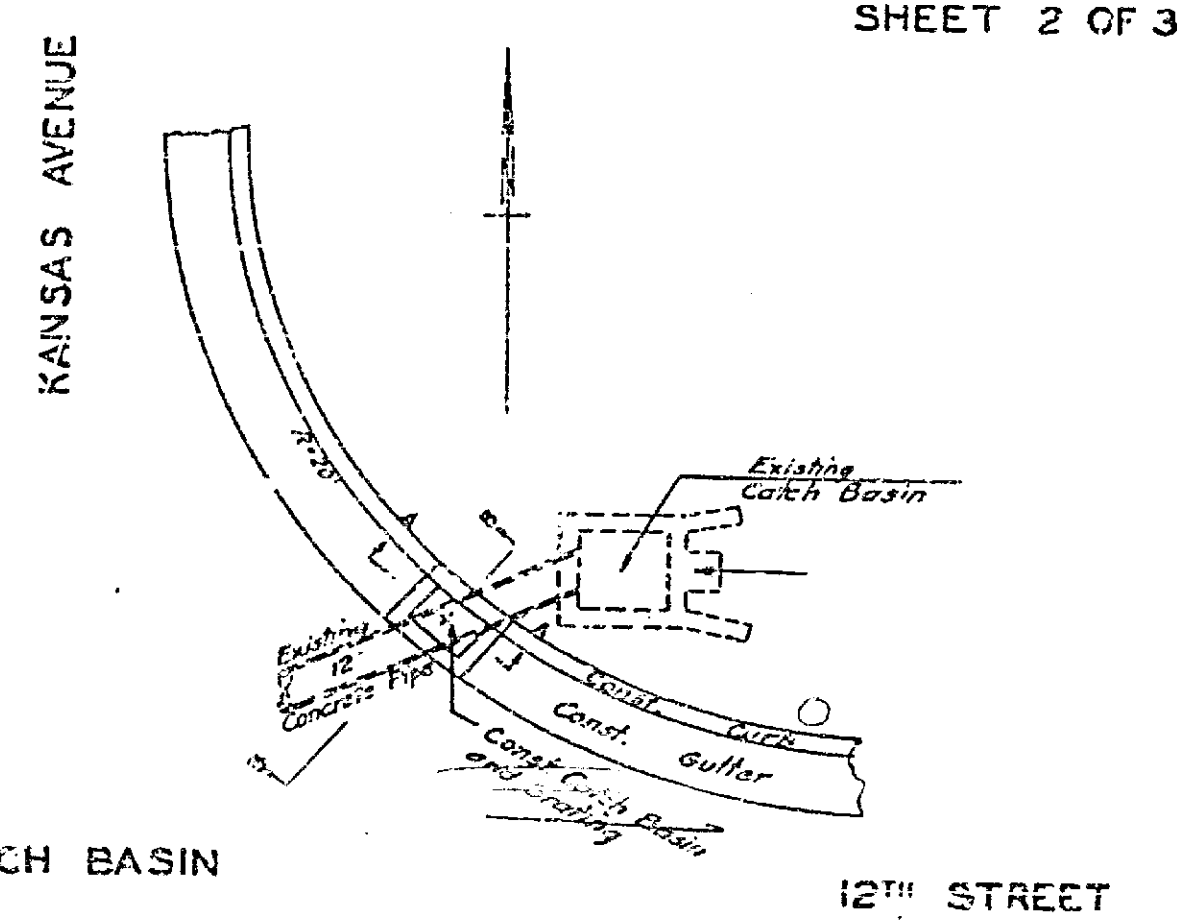
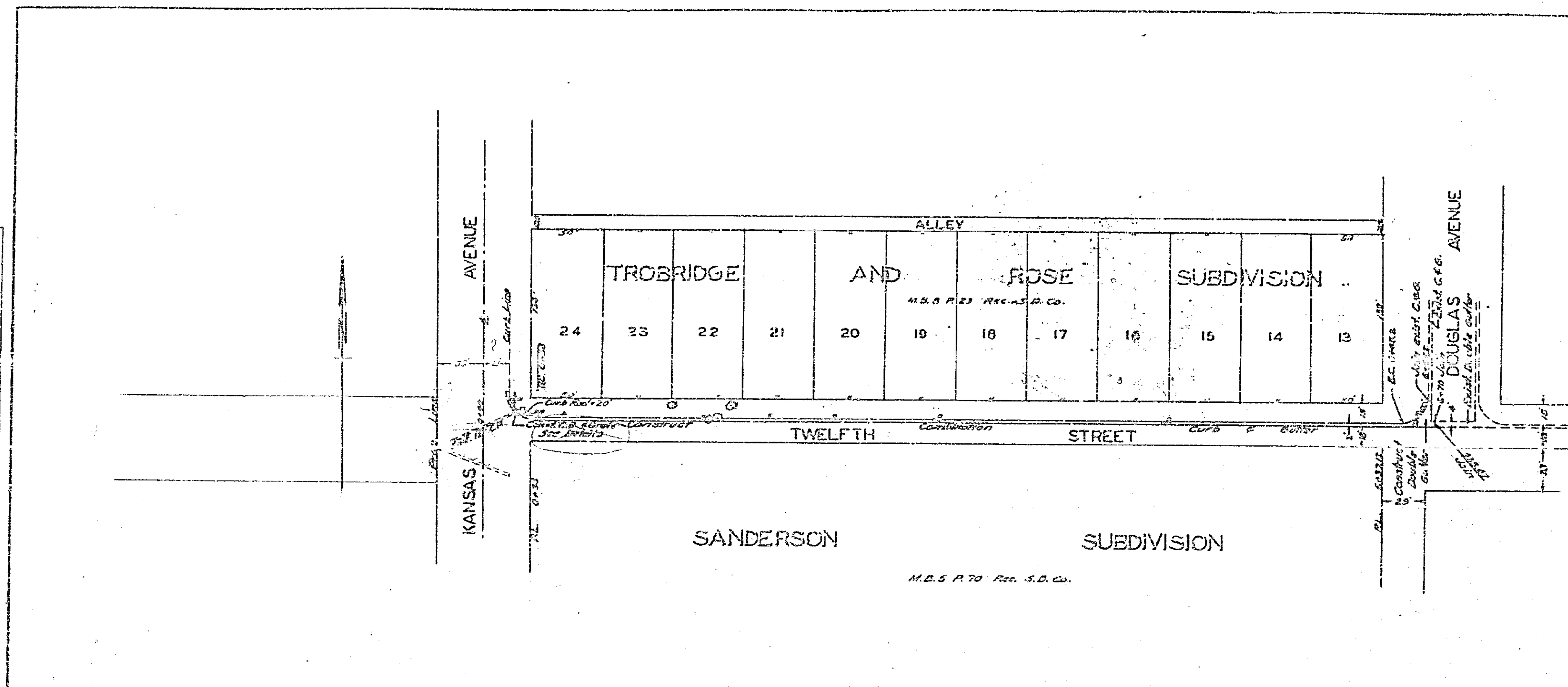
THESE PLANS APPROVED AND ADOPTED BY THE MAYOR AND
 COUNCIL OF THE CITY OF RIVERSIDE, STATE OF CALIFORNIA
 ON THIS 25th DAY OF Aug, 1952

W. J. ...
 CITY CLERK

PROFILE	DATE	BY
REVISED		
NOTED		
BY		
DATE		

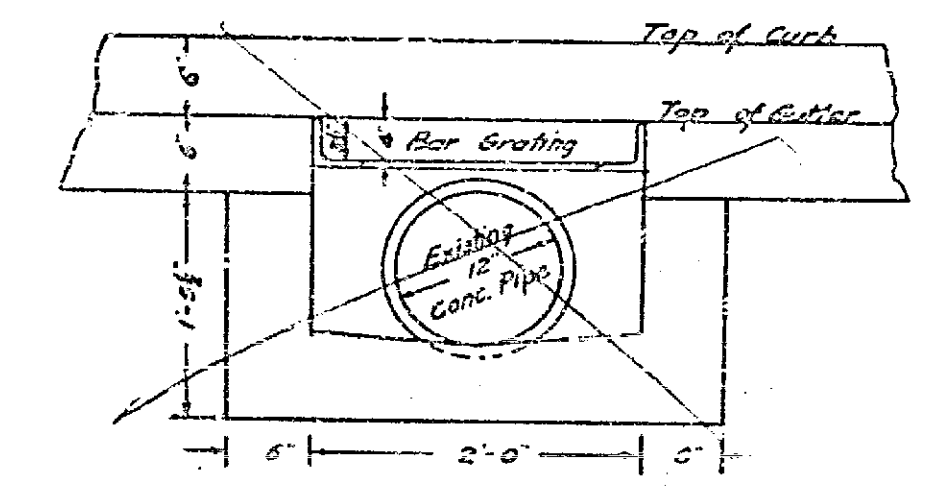
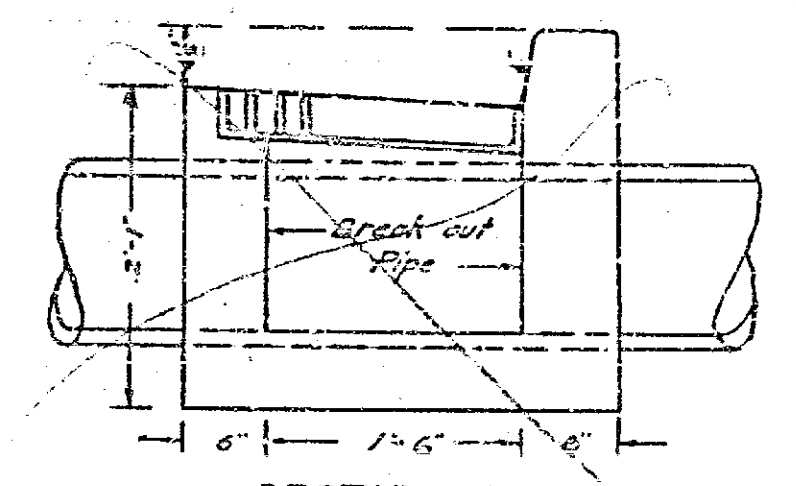


643

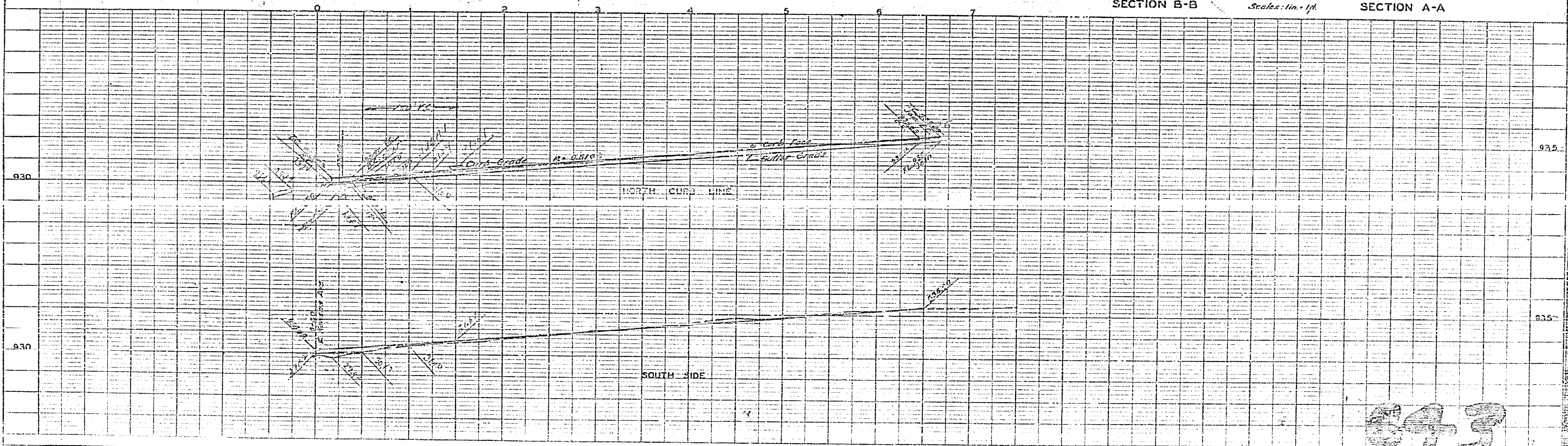


DETAILS OF CATCH BASIN

Note: Frame and Curbing to conform to Std. Detail No. 111-A



Scales: 1 in. = 1 ft.



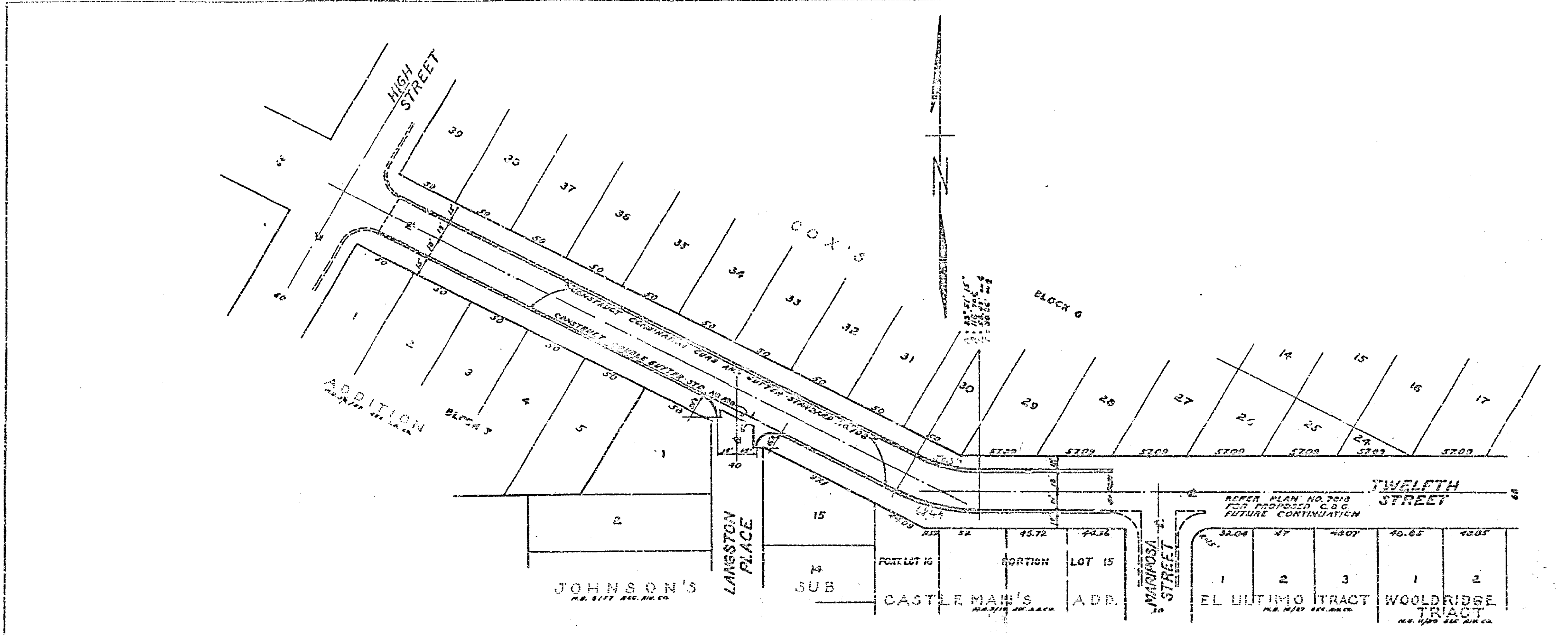
343

PLAN	DATE	BY
REVISED		
NOTE BOOK		
NO.		

PROFILE	DATE	BY
REVISED		
NOTE BOOK		
NO.		

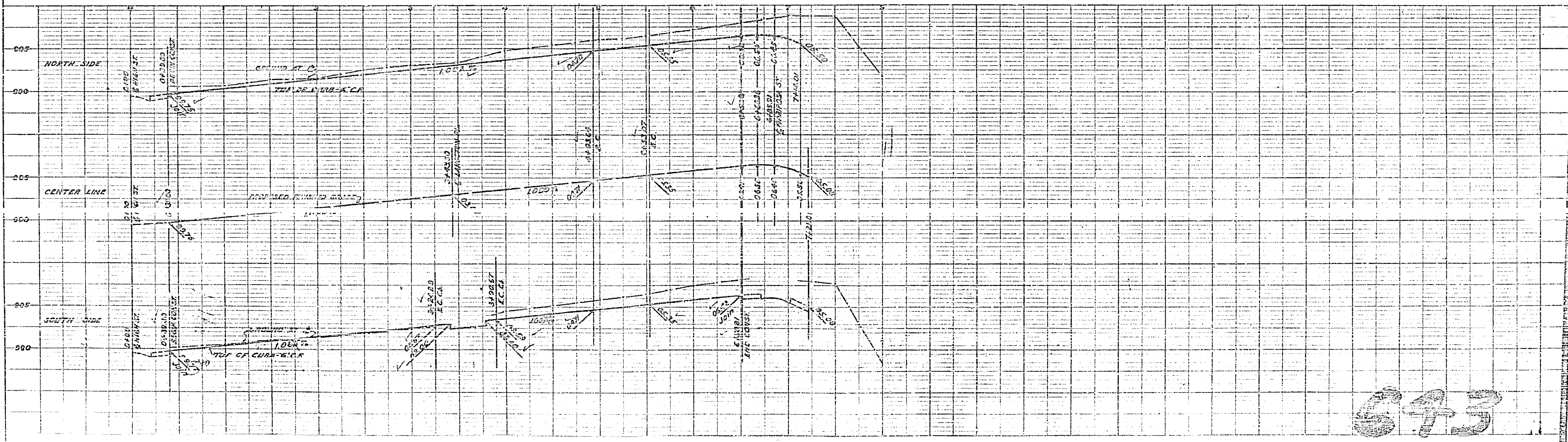
PLAN

DATE	NO.
DATE	NO.
DATE	NO.
DATE	NO.



PROFILE

DATE	NO.
DATE	NO.
DATE	NO.
DATE	NO.



643