

PLAN No. 658-A
 PLAN AND PROFILE SHOWING PROPOSED
 CURB AND GUTTER ON INDIANA AVE.
 BETWEEN
 MONROE AND ADAMS.

JULY 1954 F.B. 549, P. 35

APPROVED CITY ENGINEER

PROPERTY OF
 CITY OF RIVERSIDE
 CITY ENGINEERING DEPT.

PLAN	DATE
REVISED	BY
NOTED	
WHITE BOARD	
NO. 1	

PROFILE	DATE
REVISED	BY
NOTED	
NOTE BOOK	
NO. 1	

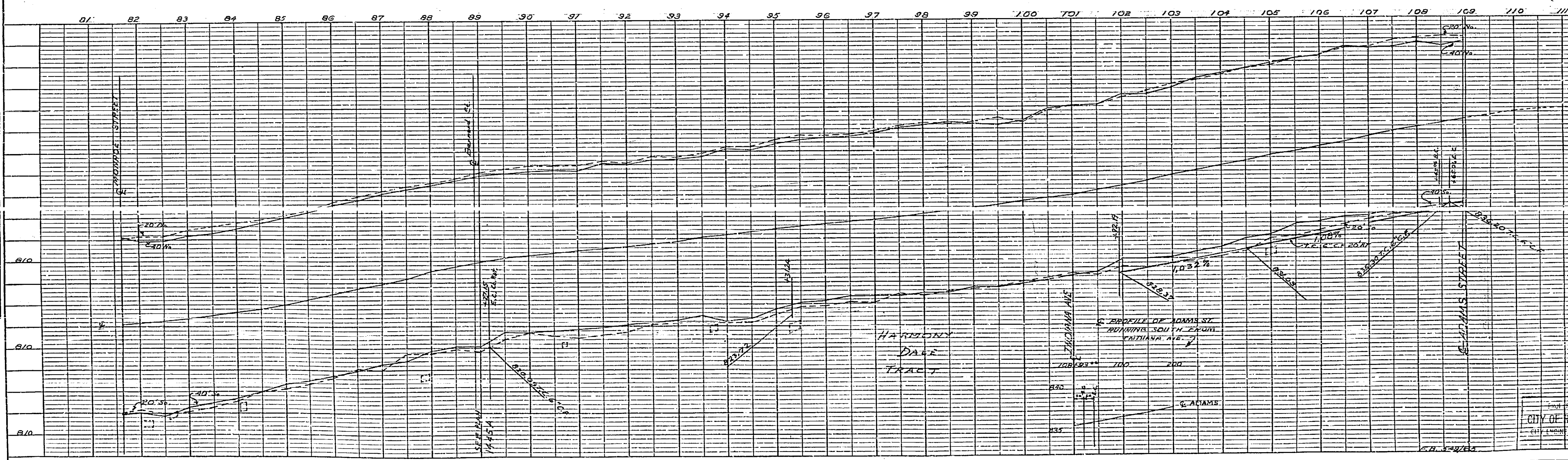
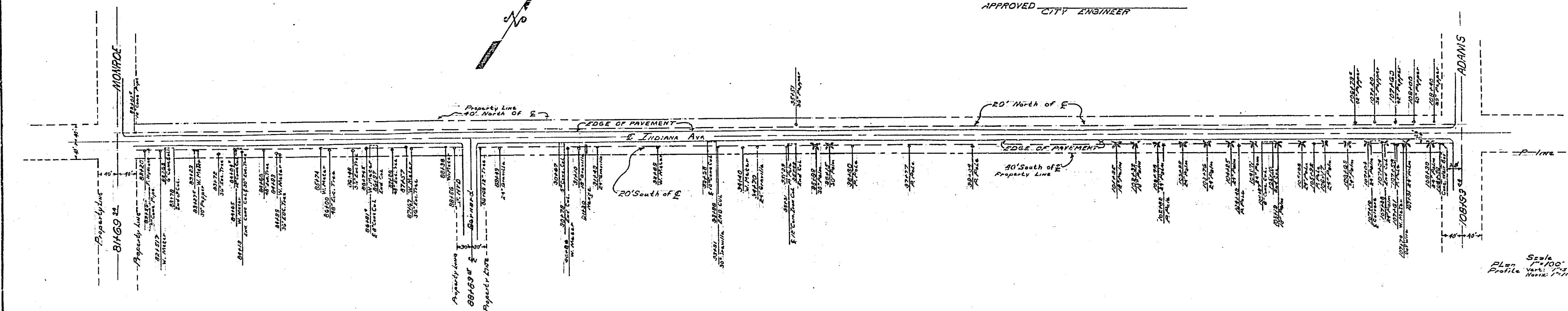


PLATE 1 - PLAN - PROFILE 0, P. P. & P. C.
 CLEARPRINT PAPER COMPANY, S. F. CAL.
 No. 10004 I

658-A