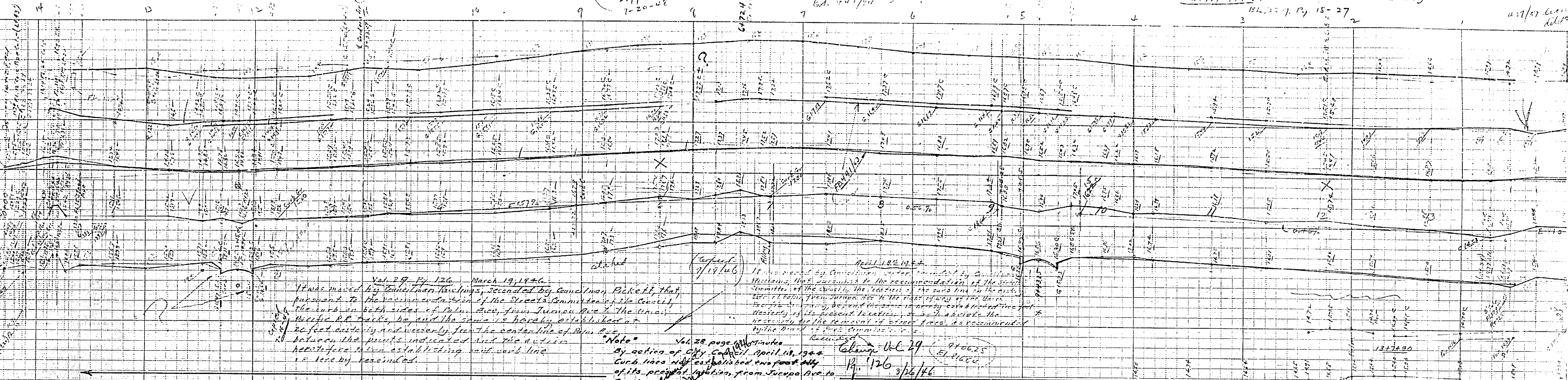


Plan No. 662-1  
Ed. 4-11-46  
7-20-48

St. Louis, Mo.  
Ed. 4-11-46

Palmer Ave. June 22 7. 1946  
BL. 15-27

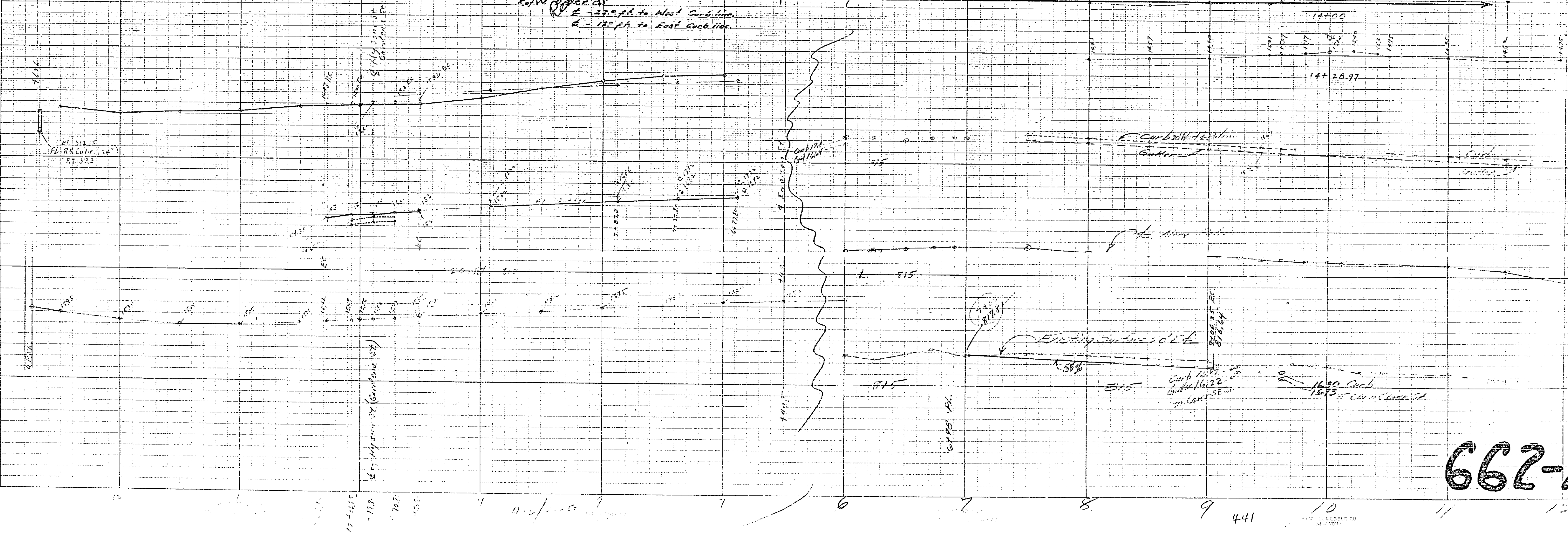
457/10  
11/10



March 19, 1946  
 It was moved by Councilman ...  
 Vol. 29, pg. 126  
 By action of City Council April 18, 1946  
 Curb lines were established two feet from  
 of its present location from Tacoma Ave. to  
 1st St. 3/26/46

April 18, 1946  
 It was moved by Councilman ...  
 Vol. 29, pg. 126  
 910025  
 EL 81680

Note:  
 Vol. 28, page 100  
 By action of City Council April 18, 1946  
 Curb lines were established two feet from  
 of its present location from Tacoma Ave. to  
 1st St. 3/26/46  
 2 - 22.0 ft. to West Curb line  
 2 - 12.0 ft. to East Curb line



662-A