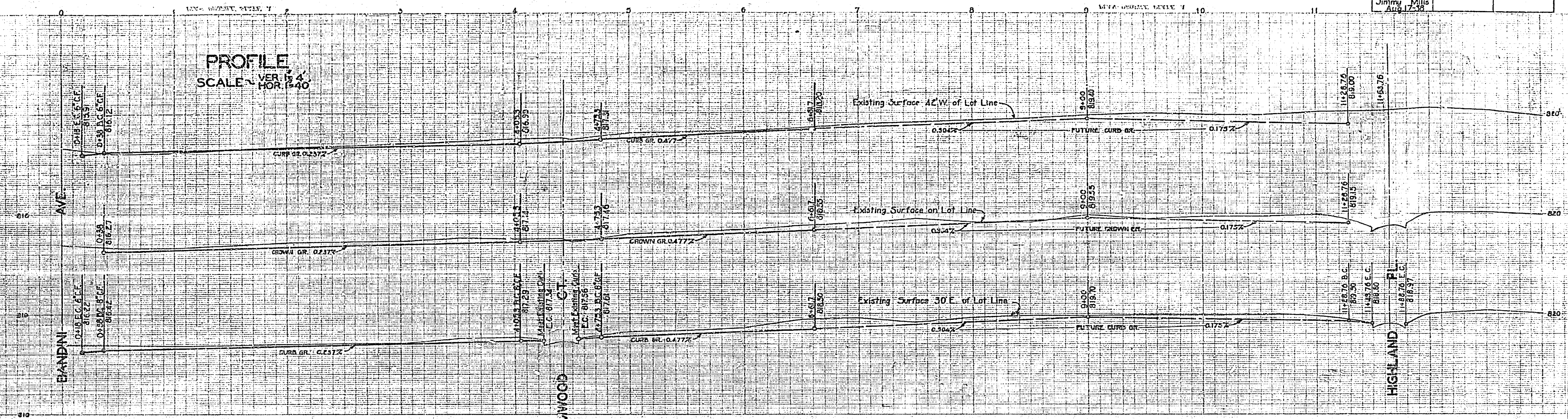


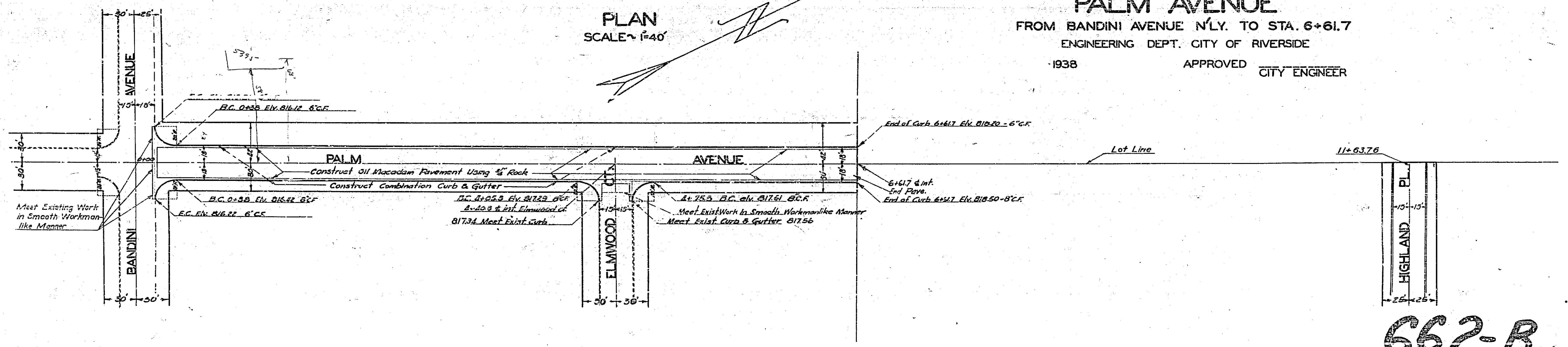
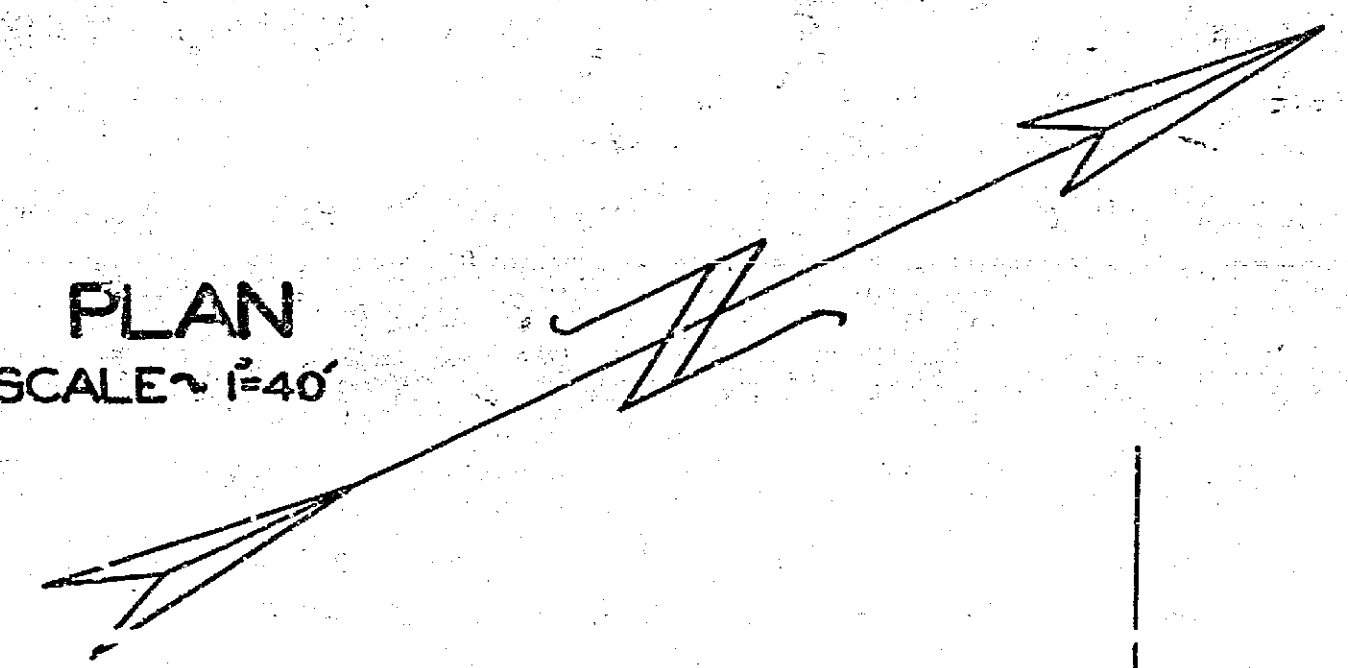
662  
662

Palm Ave. - Bandini Ave. N'ly to Sta. 6+17			
Drawing Number	Sheet Number	Total Sheets	Fold Books
662-B	1	184 - 195	
Drawn	Checked	Approved	
Jimmy Mills			
Aug 17-38			

**PROFILE**  
VER. 1/4"  
HOR. 1"=40'



**PLAN**  
SCALE 1"=40'



**PLAN AND PROFILE**  
OF THE PROPOSED IMPROVEMENT OF  
**PALM AVENUE**  
FROM BANDINI AVENUE N'LY. TO STA. 6+61.7  
ENGINEERING DEPT. CITY OF RIVERSIDE  
-1938 APPROVED CITY ENGINEER

662-B