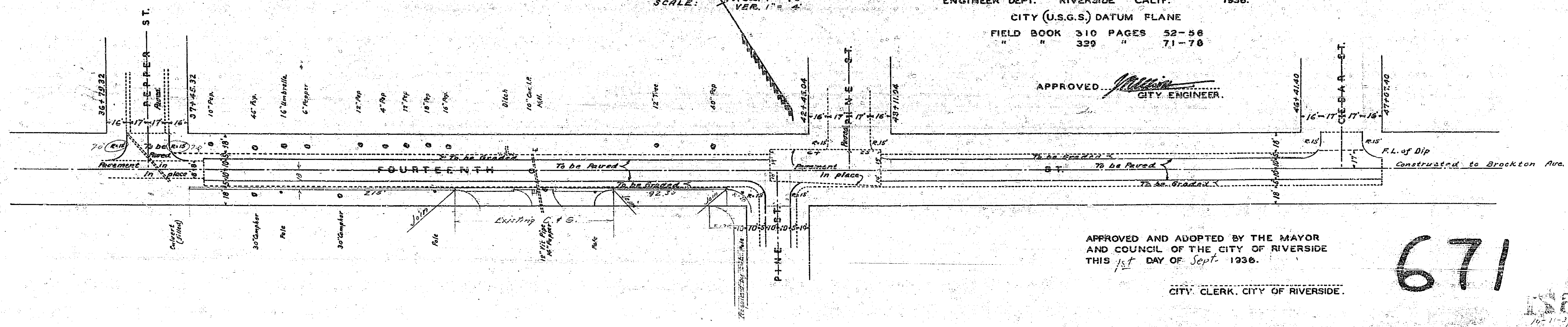


PLANS AND PROFILES  
 OF THE PROPOSED IMPROVEMENT OF  
**FOURTEENTH STREET**  
 BETWEEN PEPPER ST. & CEDAR ST.  
**PINE STREET**  
 BETWEEN FOURTEENTH ST. & TEQUESQUITE AVE.

SCALE: HOR. 1" = 40'  
 VER. 1" = 4'

ENGINEER DEPT. RIVERSIDE CALIF. 1936.  
 CITY (U.S.G.S) DATUM PLANE  
 FIELD BOOK 310 PAGES 52-56  
 " " 320 " 71-78

APPROVED *[Signature]*  
 CITY ENGINEER

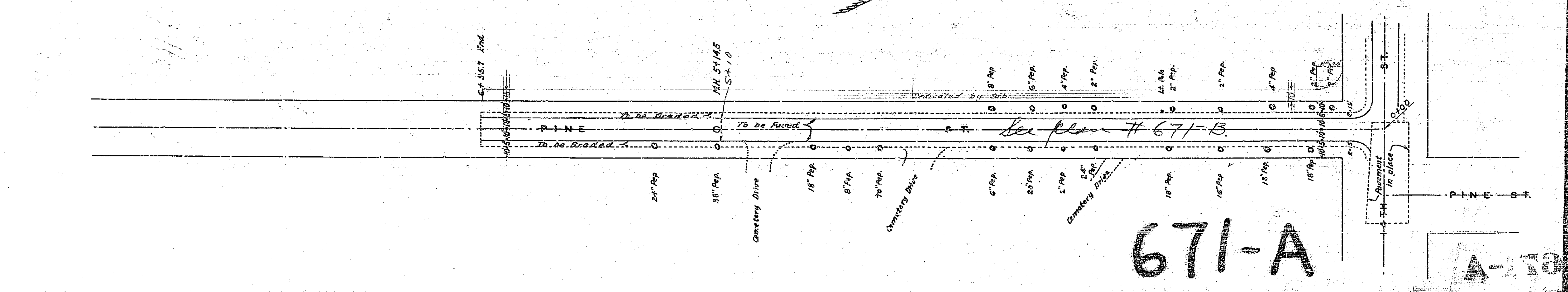
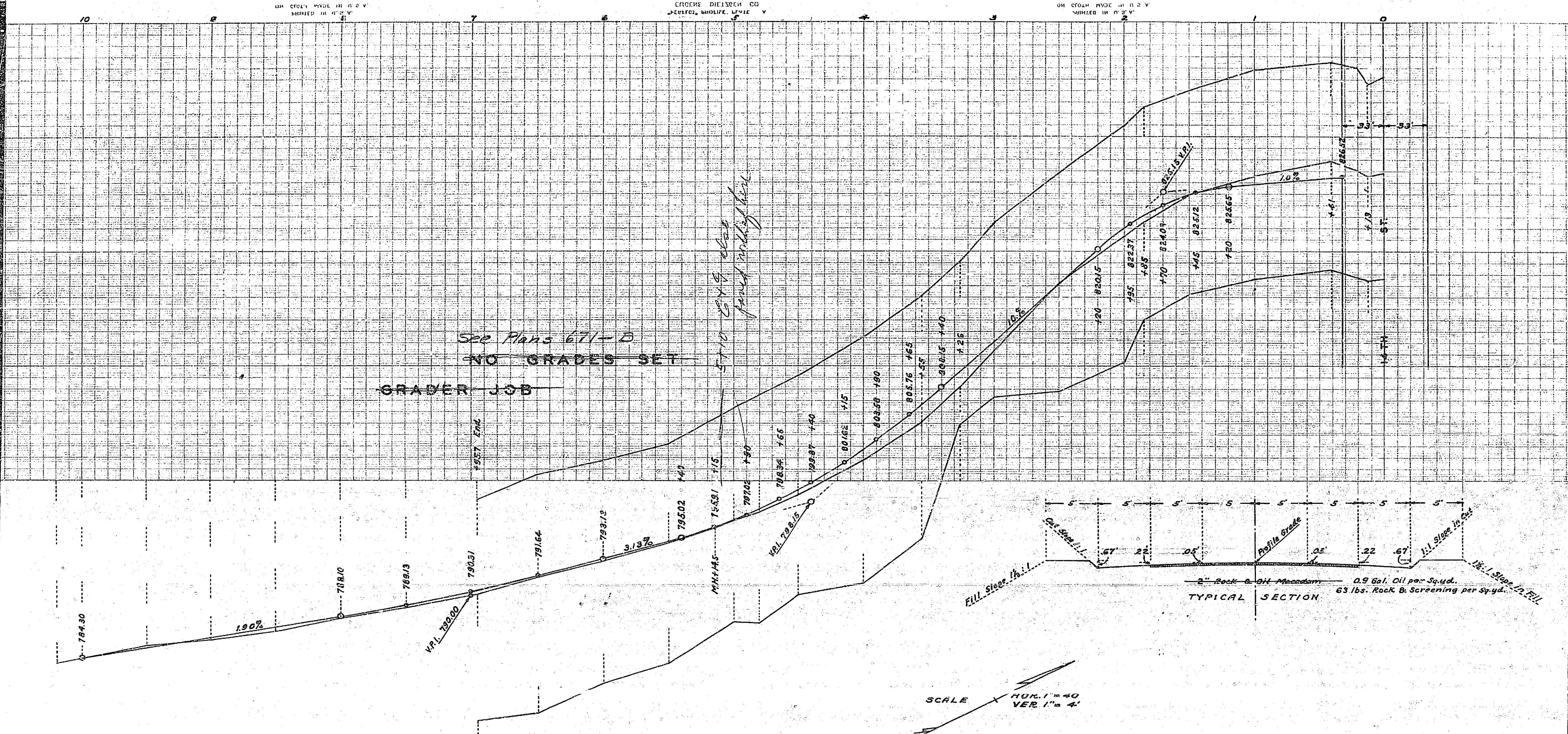


APPROVED AND ADOPTED BY THE MAYOR  
 AND COUNCIL OF THE CITY OF RIVERSIDE  
 THIS 1st DAY OF Sept. 1936.

CITY CLERK, CITY OF RIVERSIDE.

671

PINE STREET	
FOURTEENTH ST TO TROUSQUITE AVE.	
Drawing No. Sheet No.	Total Sheet Field Book
671-A	2
Checked	Checked
8-28-36	8-28-36



671-A

A-178