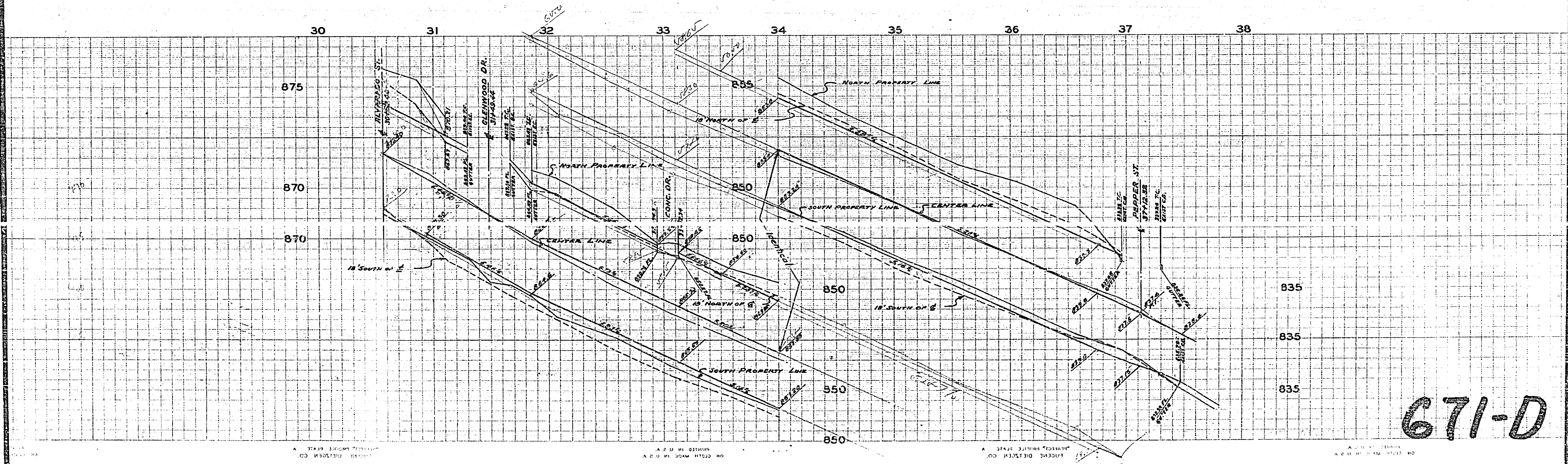


PLAN AND PROFILES
 NO. 671-D
 FOR THE CONSTRUCTION OF CURB & GUTTER ON
FOURTEENTH STREET
 BETWEEN PEPPER ST AND GLENWOOD DR.

APPROVED M. H. IRVING CE 3011
 CITY ENGINEER
 FB. 485 PG. 71
 SCALE HOR. 1" = 40'
 VERT. 1" = 4'



671-D