

# PLANS AND PROFILES

OF THE PROPOSED STREET IMPROVEMENT OF

## VIRGINIA PLACE

BETWEEN RUBIDOUX AVENUE AND NORTHERLY END

Constructed by Street Dept. 1938.

ENGINEERING DEPT. CITY OF RIVERSIDE DECEMBER 1935

CITY ENGINEER

FIELD BOOK 324 PAGE 52

ELEVATIONS SHOWN HEREON ARE U.S.G.S. DATUM WHICH IS THE OFFICIAL CITY DATUM PLANE.

APPROVED AND ADOPTED BY THE MAYOR AND COUNCIL OF THE CITY OF RIVERSIDE THIS 24TH DAY OF DECEMBER 1935.

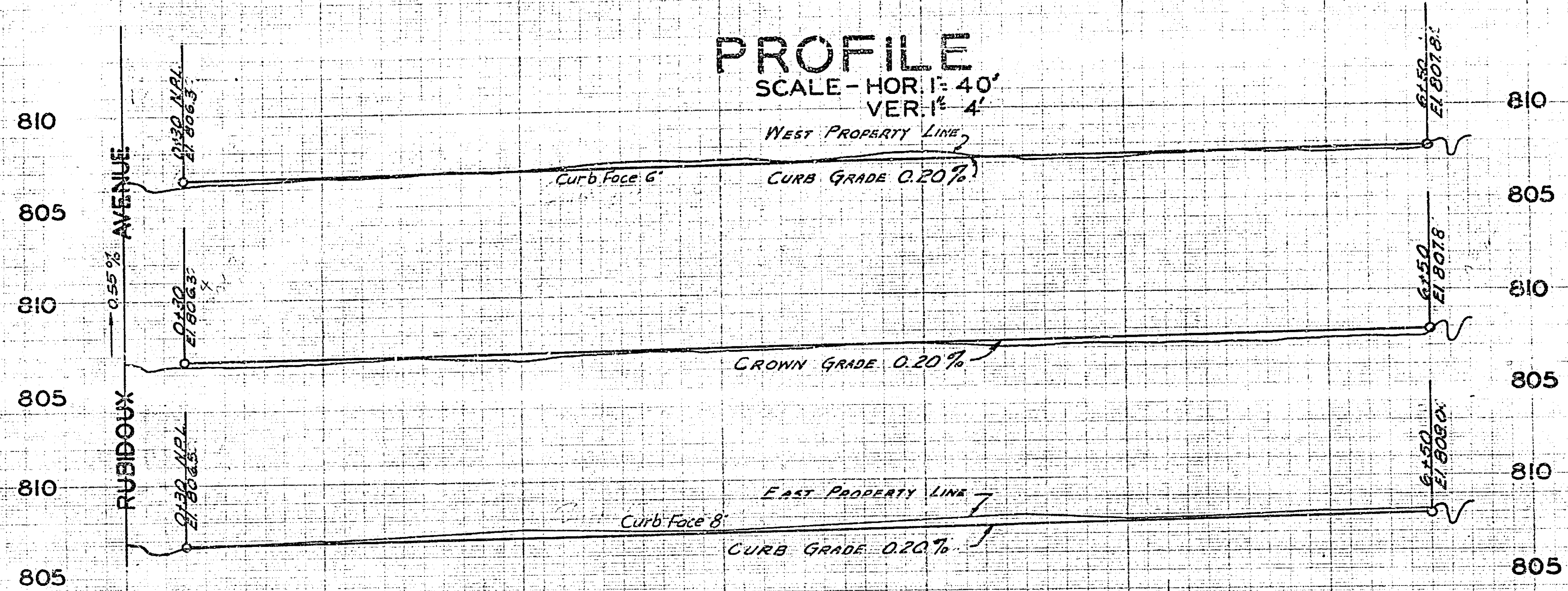
CITY CLERK CITY OF RIVERSIDE

684

DRWG NO.	SHEET NO.	TOTAL SHEETS	FIELD BOOK
684	1	1	324
FLATTED	CHECKED	APPROVED	

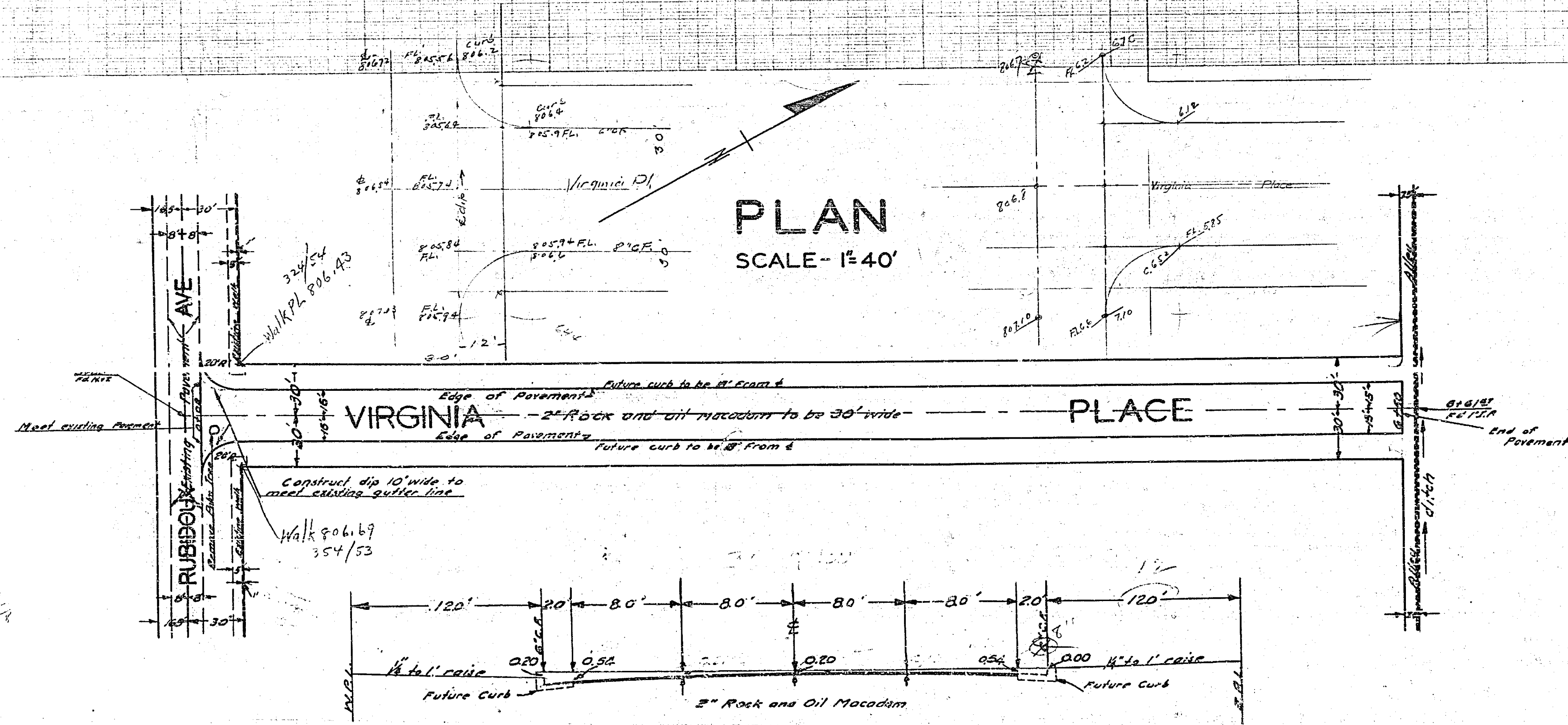
### PROFILE

SCALE - HORI: 40'  
VER: 4'



### PLAN

SCALE - 1" = 40'



TYPICAL X-SECTION  
SCALE - 1" = 5'