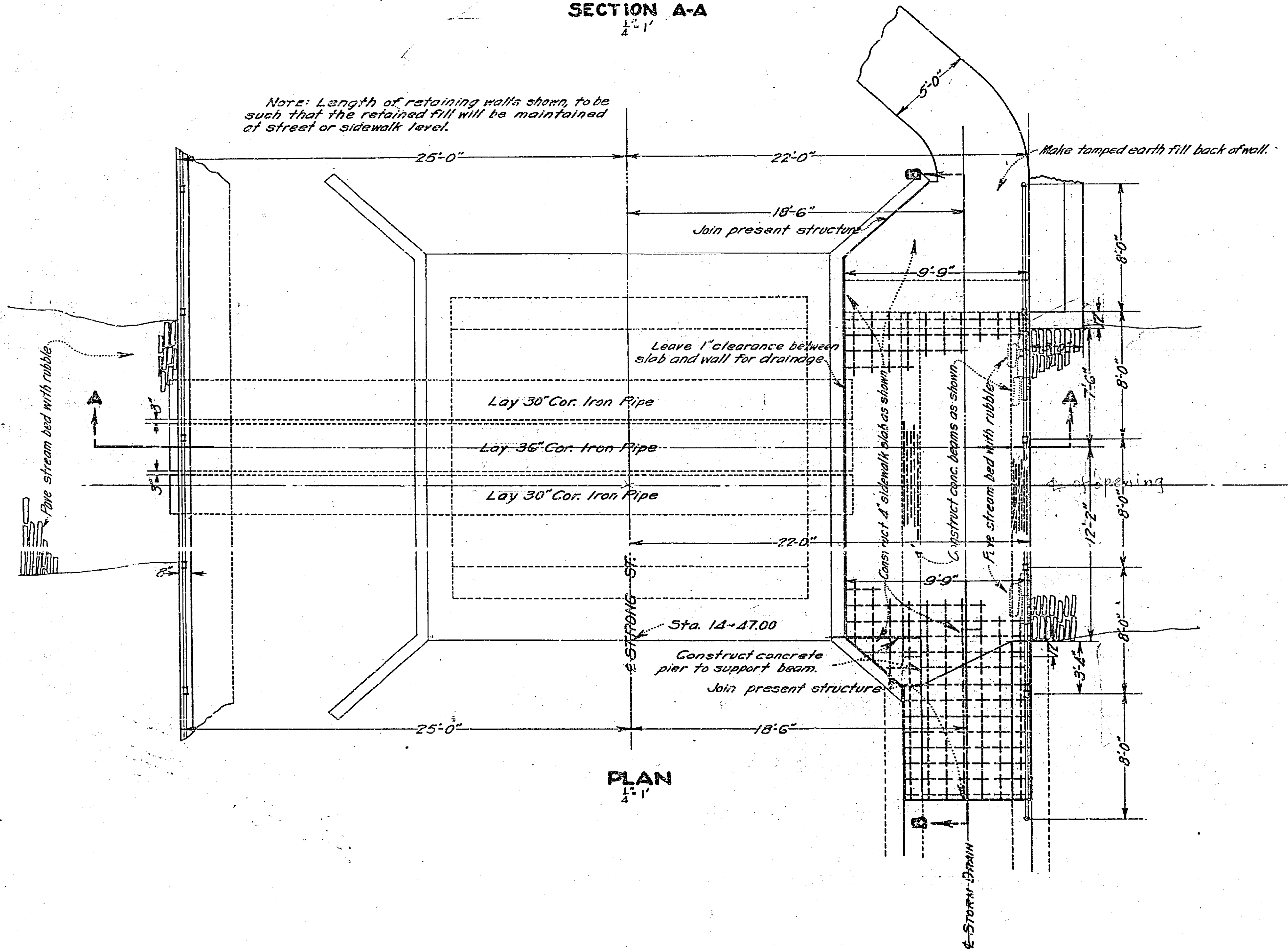


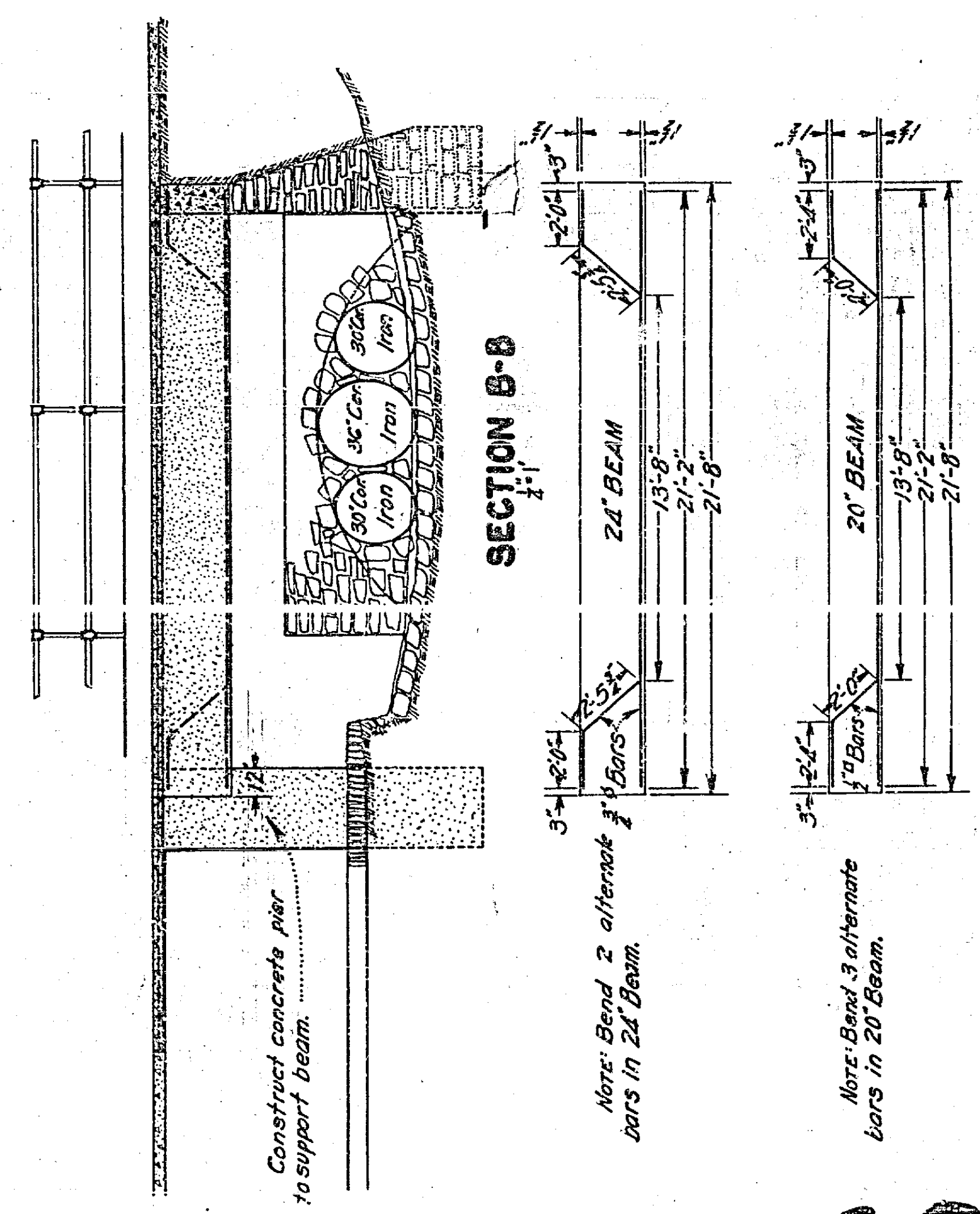
**STRONG ST. STORM DRAIN**  
SHEET 2 OF 2 SHEETS

**SECTION A-A**  
1/4" = 1'

Note: Length of retaining walls shown, to be such that the retained fill will be maintained at street or sidewalk level.



**PLAN**  
1/4" = 1'



**SECTION B-B**  
1/4" = 1'

**STEEL BENDING SCHEDULE**

Note: Bend 2 alternate #4 Bars bars in 24' Beam.

Note: Bend 3 alternate bars in 20' Beam.

685-A