

PLANS AND PROFILES
 NO. 692

FOR THE CONSTRUCTION OF
 CONCRETE CURBS AND GUTTERS ON
LINDEN STREET
 FROM KANSAS AVENUE EASTERLY 1707 FEET
DOUGLASS AVENUE
 BETWEEN LOMA VISTA STREET AND LINDEN STREET
DWIGHT AVENUE
 BETWEEN SEVENTH STREET AND LINDEN STREET
OTTAWA AVENUE
 FROM LINDEN STREET SOUTHERLY 167.7 FEET
 CITY OF RIVERSIDE, CALIFORNIA

SHEETS 2, 3 & 4 SCALES: HORIZ. 1" = 50'
 VERT. 1" = 5'

APPROVED *M. H. Irvine*
 M. H. IRVINE, REG. CIVIL ENGR.
 CITY ENGINEER

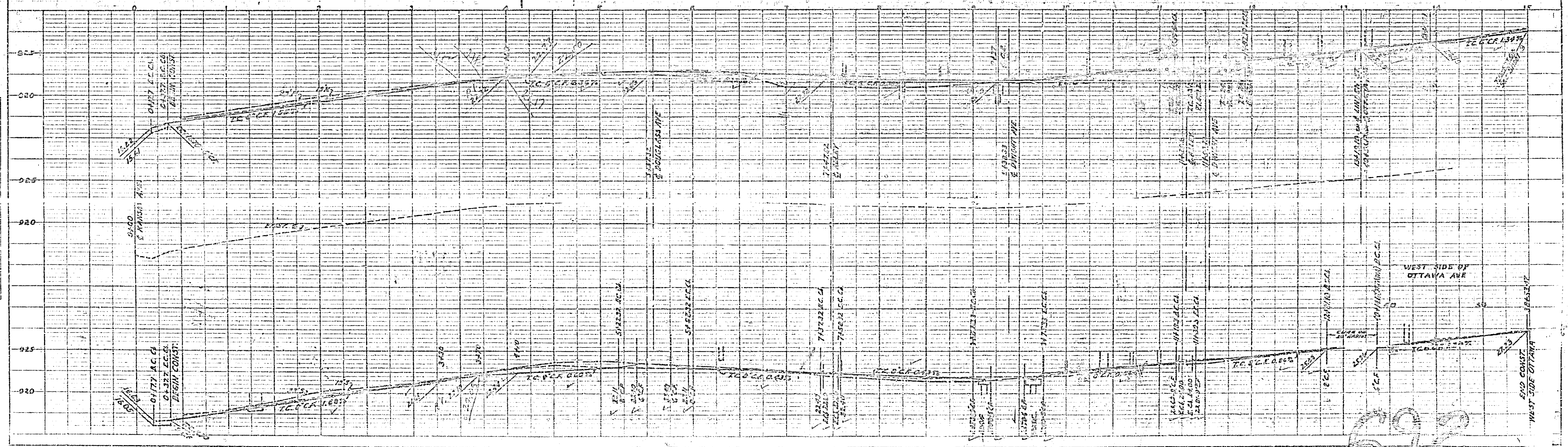
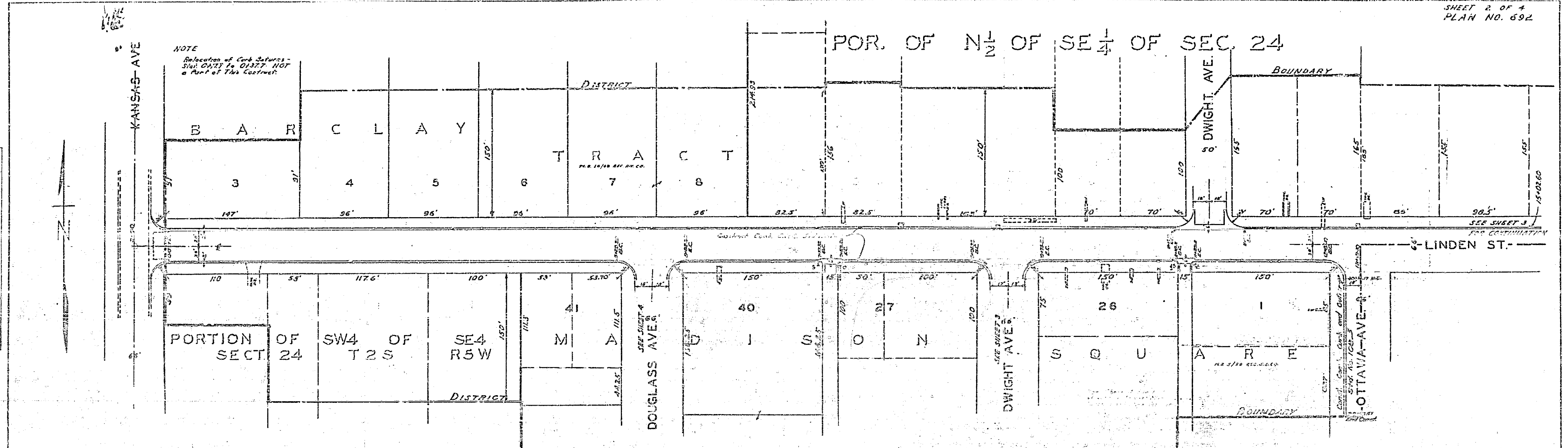
THESE PLANS APPROVED AND ADOPTED BY
 THE MAYOR AND COUNCIL OF THE CITY OF
 RIVERSIDE, STATE OF CALIFORNIA ON THIS
 23RD DAY OF October 1952

William
 CITY CLERK

692

POR. OF N¹/₂ OF SE¹/₄ OF SEC. 24

NOTE
Relocation of Curb Returns -
Shd. 01377 to 01377-NOT
a Part of This Contract



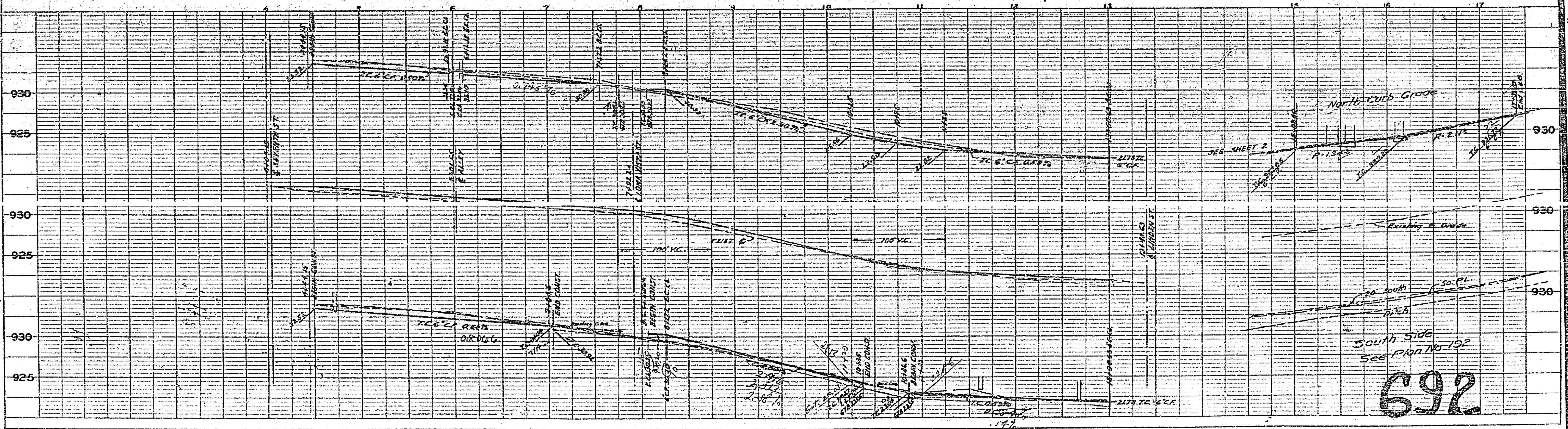
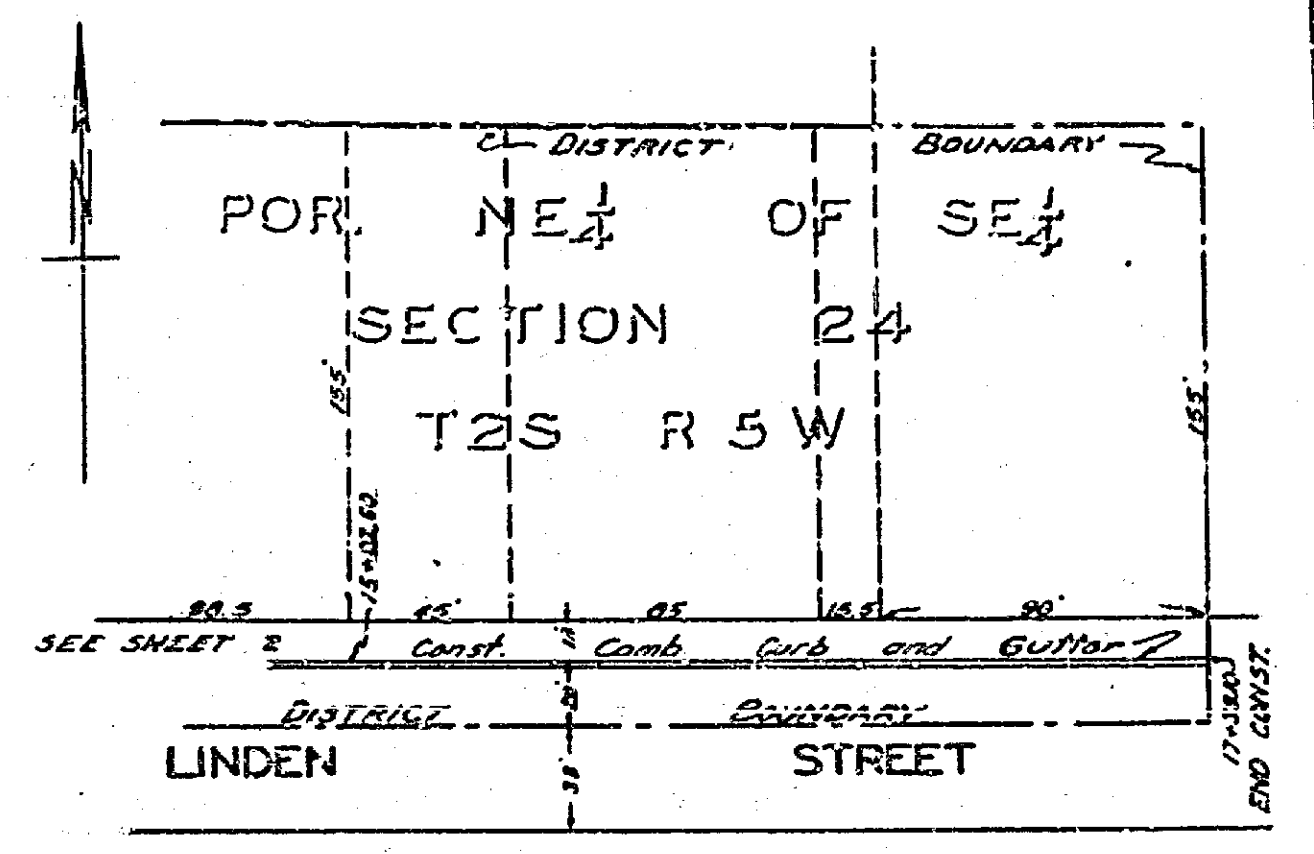
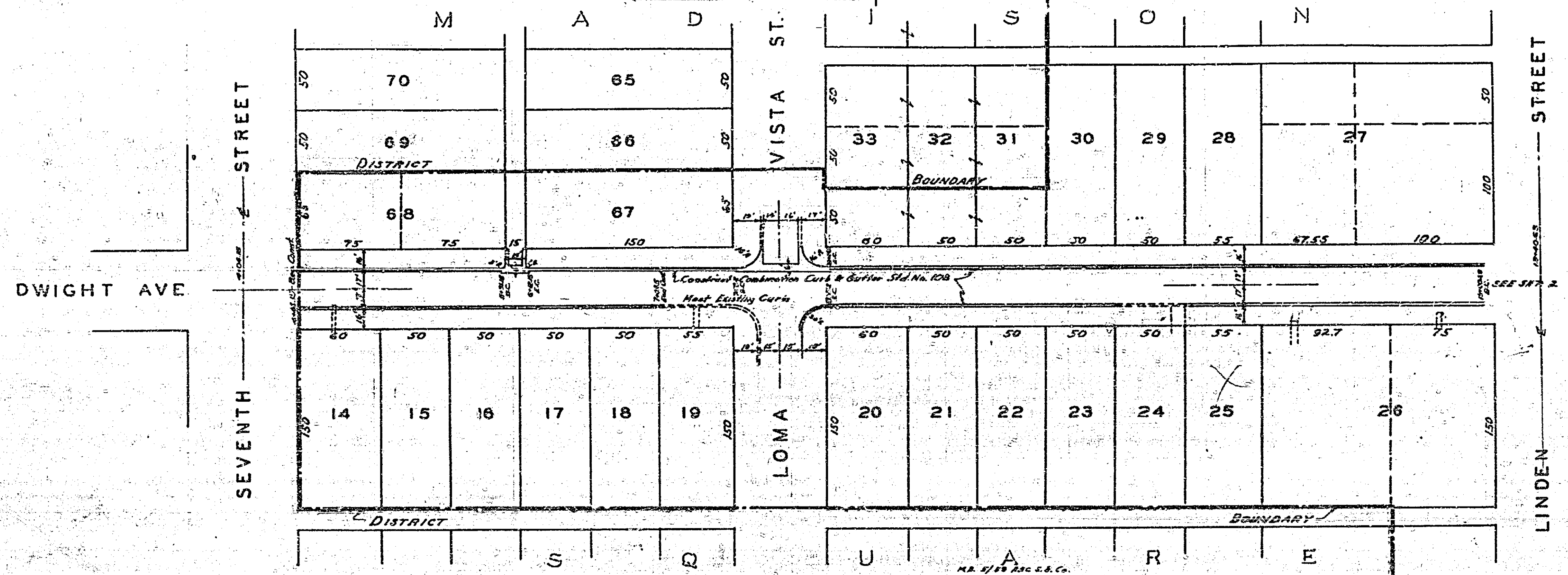
692

PLAN	DATE
REVISIONS	
NOTE BOOK	
ENGINEER	
DRAWN	

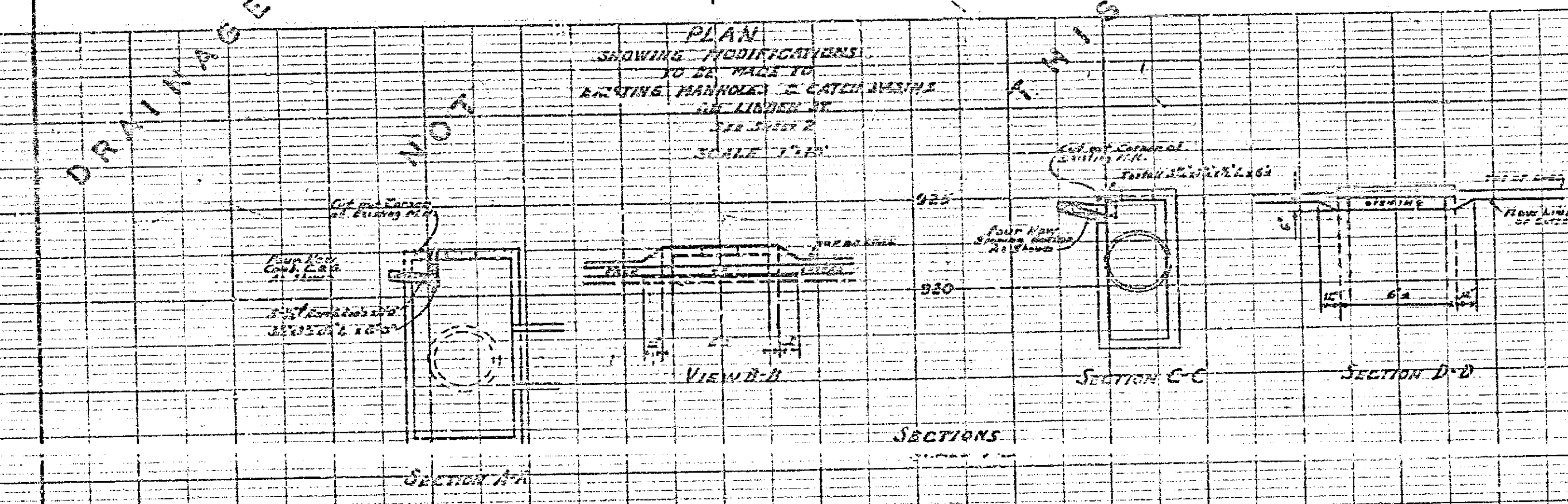
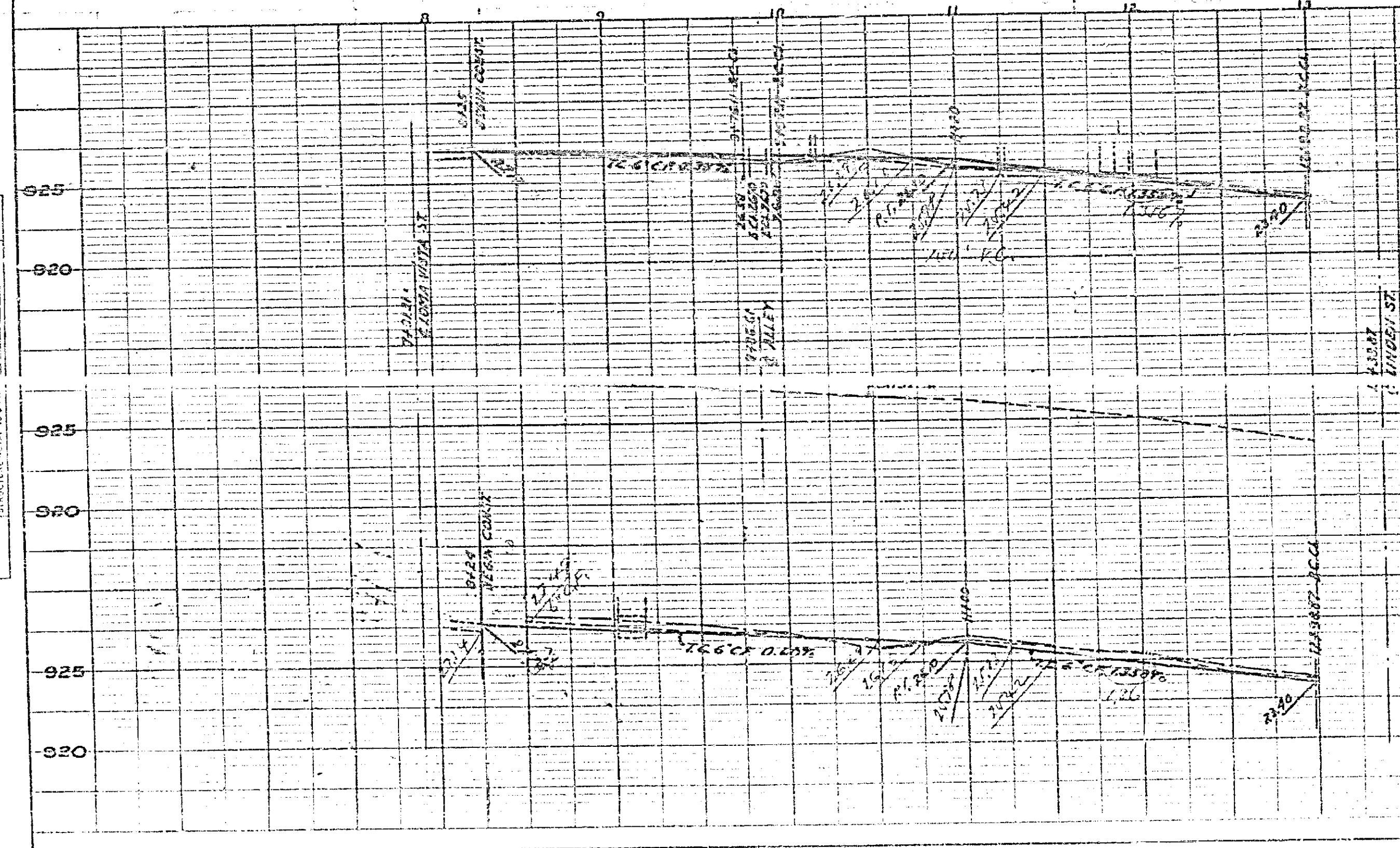
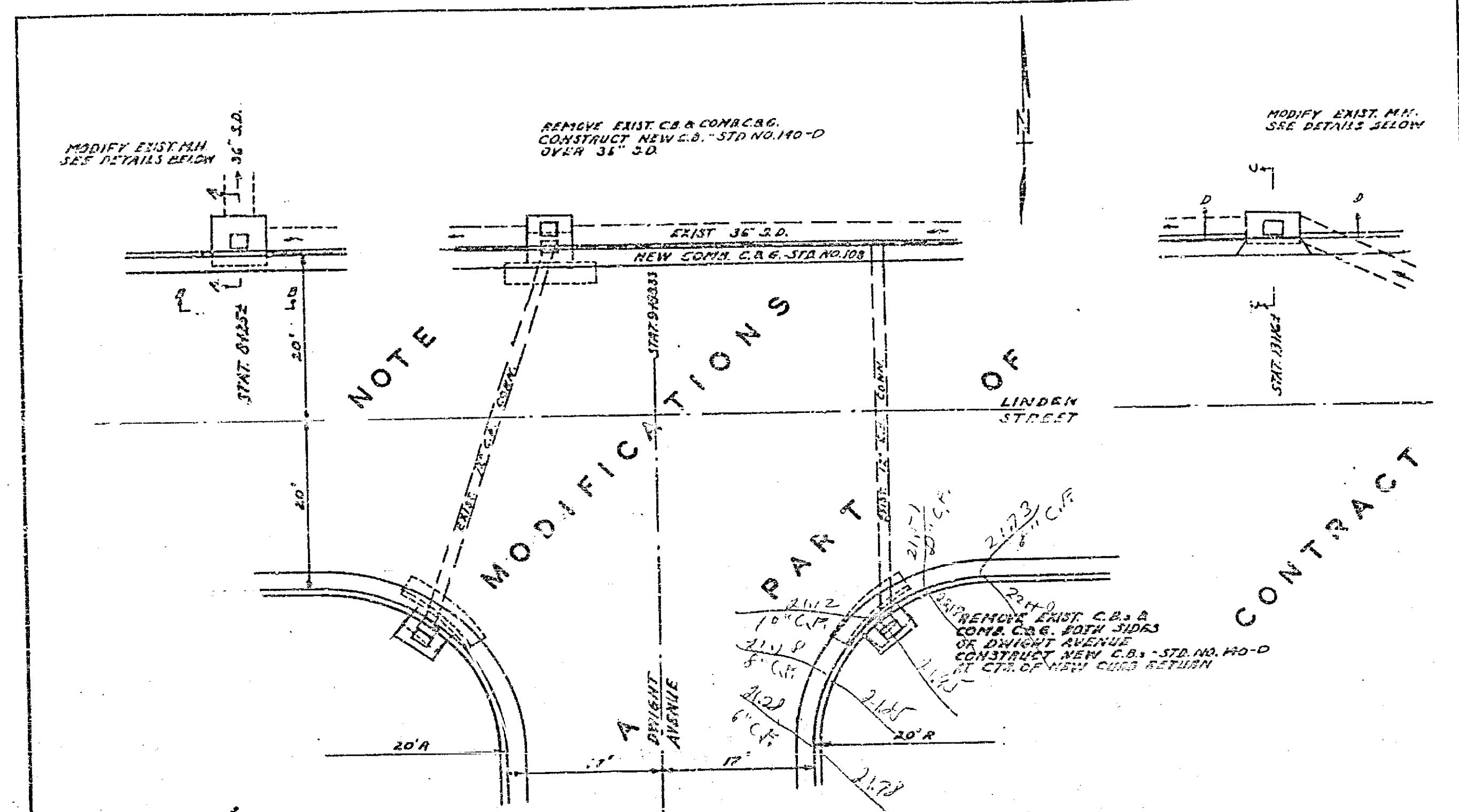
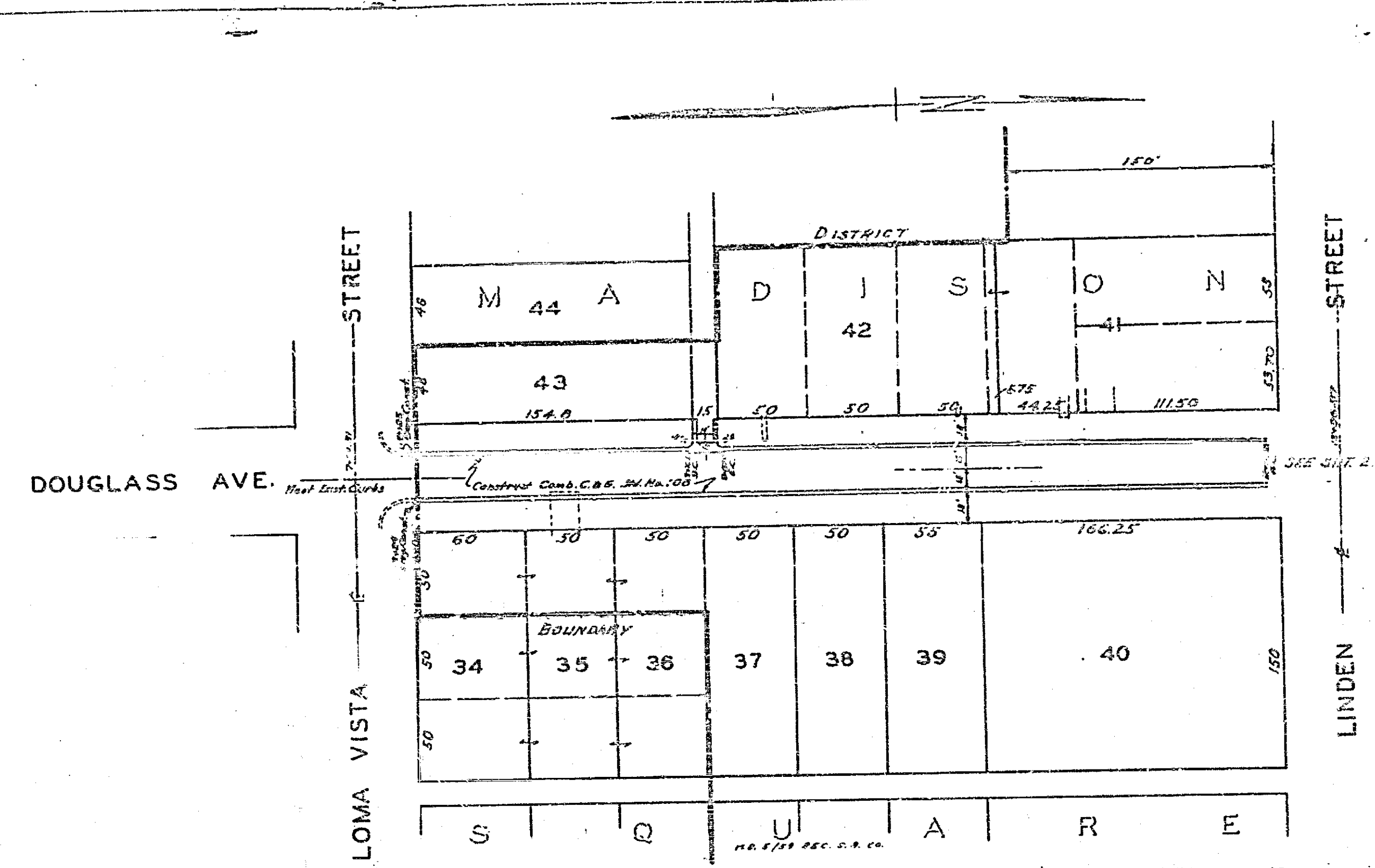
PROFILE	DATE
REVISIONS	
NOTE BOOK	
ENGINEER	
DRAWN	

PLAN	DATE
NO.	
BY	
CHECKED	
APPROVED	
DATE	

PROFILE	DATE
NO.	
BY	
CHECKED	
APPROVED	
DATE	



692



692

DATE	BY	REVISION

DATE	BY	REVISION

PLANNED BY: [Name]
DESIGNED BY: [Name]
CHECKED BY: [Name]
DATE: [Date]