

ASSESSMENT NO. 371

DIAGRAM

EXHIBIT 3 LINDEN STREET IMPROVEMENT DISTRICT

IN THE CITY OF RIVERSIDE ON WHICH WORK HAS BEEN DONE UNDER MY OFFICIAL CONTRACT AS SUPERINTENDENT OF STREETS OF SAID CITY WITH CO. BRAND DATED MARCH 17 1953

FOR THE CONSTRUCTION OF COMBINATION CURBS & GUTTERS AND DOUBLE GUTTER

AS IS MORE PARTICULARLY DESCRIBED IN SAID CONTRACT TO WHICH REFERENCE IS HEREBY MADE FOR FURTHER PARTICULARS; SAID DIAGRAM ALSO SHOWS THE RELATIVE LOCATION OF EACH LOT, PIECE OR PARCEL OF LAND ASSESSED FOR THE WORK DONE NUMBERED IN CIRCLES TO CORRESPOND TO THE RED INK NUMBERS IN THE ASSESSMENT

HEREIN FIGURES NEXT TO PROPERTY LINES SHOW LENGTH OF SAID LINES IN FEET. THE MARK (O) MEANS FEET. PROPERTY LINES THAT DIFFER FROM THE RECORDED SUBDIVISIONS ARE SHOWN BY BROKEN LINES. THE DISTRICT BENEFITED IS BOUNDARY BY A HEAVY DASHED LINE.

PROPERTY COVERED BY THIS ASSESSMENT IS SHOWN ON THE FOLLOWING RECORDED MAPS:

- BARCLAY TRACT M.B. 10, PG. 98, REC. RIV. CO.
- MADISON SQUARE M.B. 5, PG. 59, REC. S.B. CO.
- SECTION 24, T.2S, R.5W, S.B.B.&M.

I HEREBY CERTIFY THAT THIS ASSESSMENT DIAGRAM WAS APPROVED BY THE CITY COUNCIL OF THE CITY OF RIVERSIDE AT A MEETING THEREOF HELD ON THE 15 DAY OF

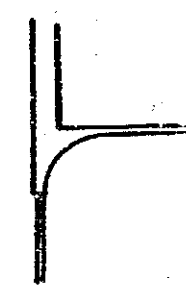
CITY CLERK OF THE CITY OF RIVERSIDE.

HEREIN THE LEGEND OF THE DIFFERENT KINDS OF WORK PERFORMED IS SHOWN AS FOLLOWS:

COMBINATION CURB & GUTTER



DOUBLE GUTTER



- COMB. CURB & GUTTER-6" CURB FACE 4444.10 LIN. FT.
- COMB. CURB & GUTTER-8" CURB FACE 1116.18 LIN. FT.
- DOUBLE GUTTER 1081.24 SQ. FT.

SUPERINTENDENT OF STREETS OF THE CITY OF RIVERSIDE THE FOLLOWING IS A STATEMENT OF AMOUNTS OF DIFFERENT KINDS OF WORK DONE BY CO. BRAND UNDER

CONTRACT DATED MARCH 17 1953 PURSUANT TO RESOLUTION OF INTENTION NO 5538 ADOPTED BY THE CITY COUNCIL OF THE CITY OF RIVERSIDE ON THE 16TH DAY OF DECEMBER 1952

AT SAID CITY OF RIVERSIDE THIS DAY OF

SUPERINTENDENT OF STREETS OF THE CITY OF RIVERSIDE.

I HEREBY CERTIFY THAT THE ABOVE WORK WAS DONE IN ACCORDANCE WITH LINES AND GRADES FURNISHED BY ME AND THAT THE DIAGRAM OF THE ASSESSMENT DISTRICT FOR THE SAME IS CORRECT.

CITY ENGINEER OF THE CITY OF RIVERSIDE.

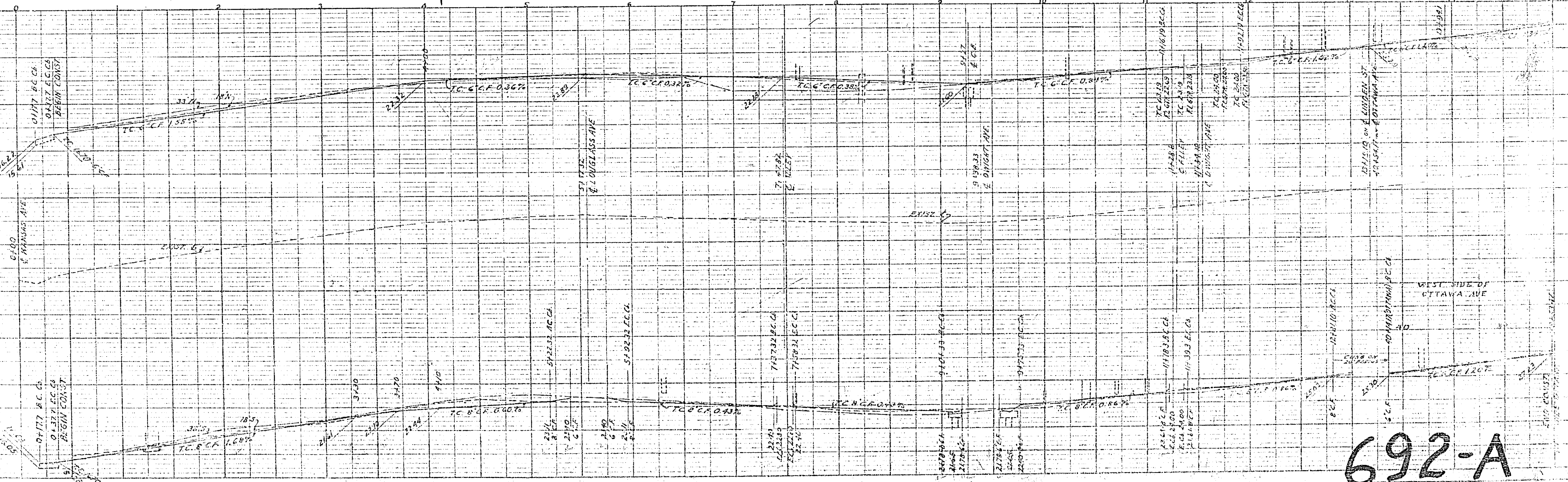
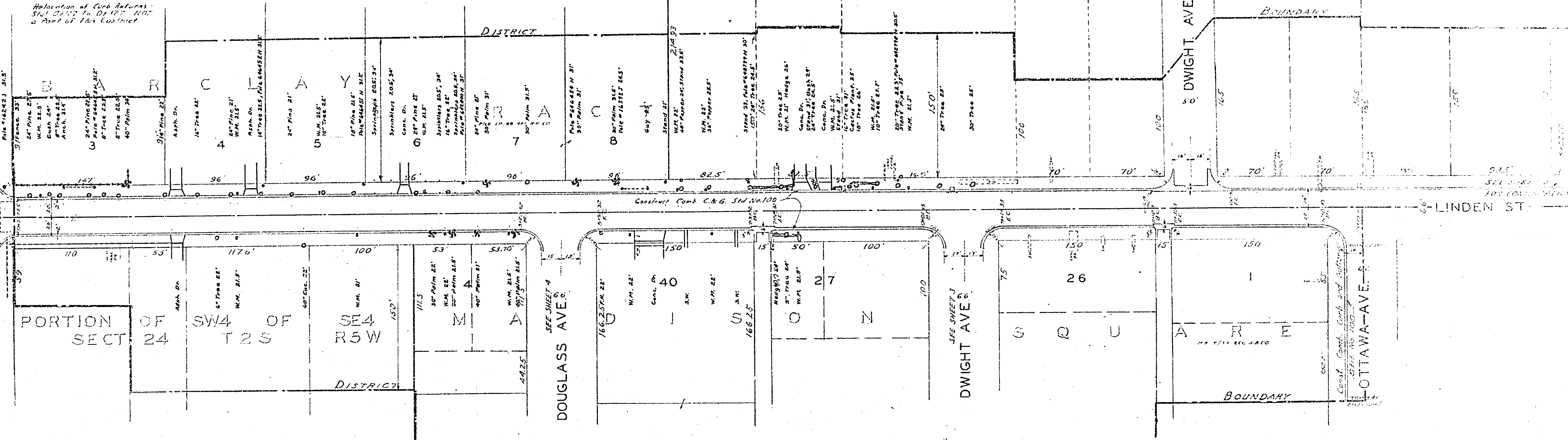
RECORDED AT 4:25 O'CLOCK P.M. THIS 16TH DAY OF JUNE 1953

SUPERINTENDENT OF STREETS OF THE CITY OF RIVERSIDE.

POR. OF N 1/2 OF SE 1/4 OF SEC. 24

KANSAS AVE

NOTE
Relocation of Curb Returns
5142 21/2" To 04 1/2" NOT
a Part of This Contract



692-A