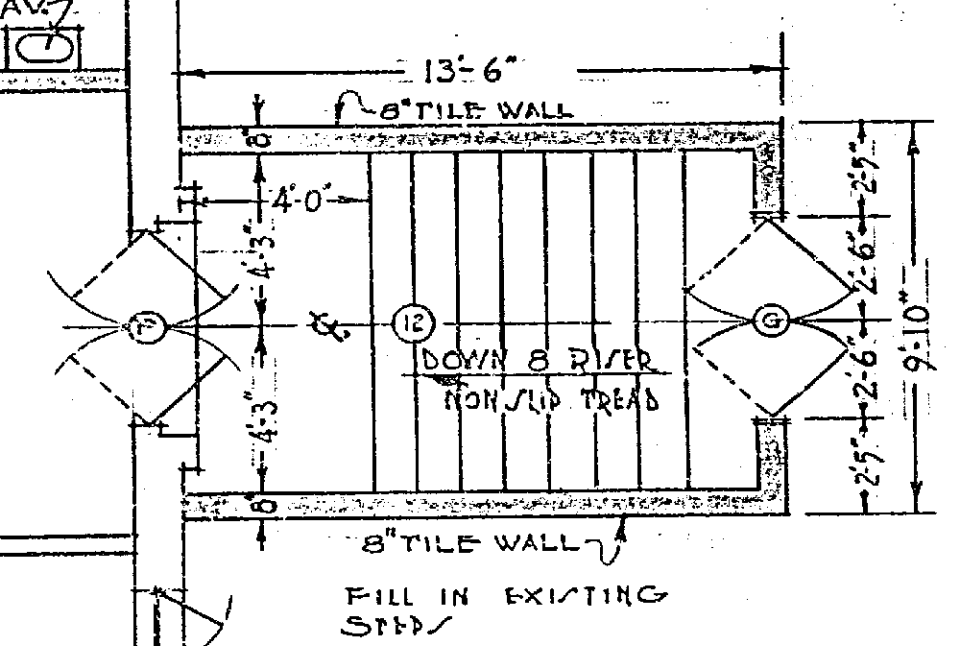
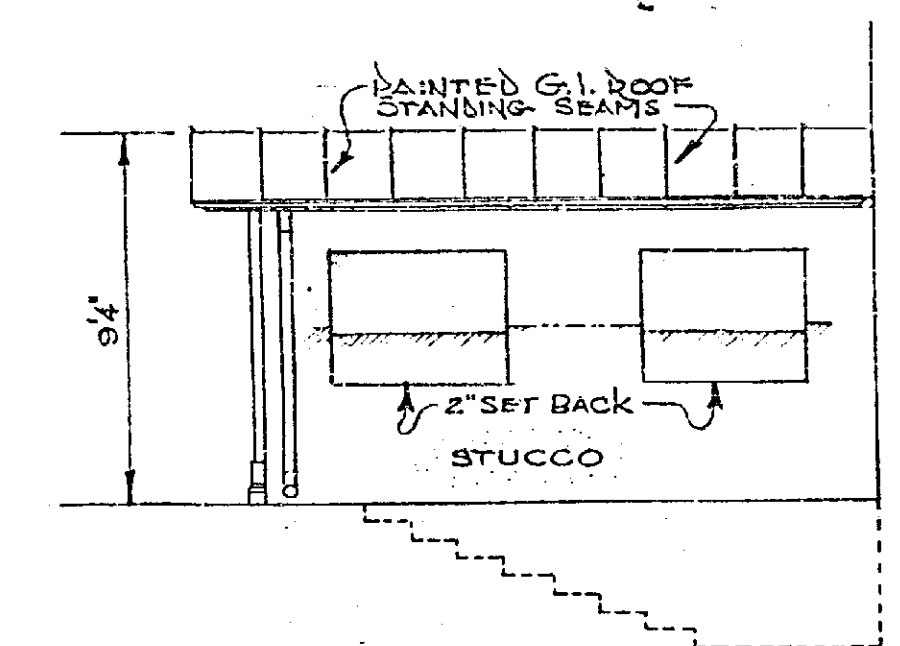
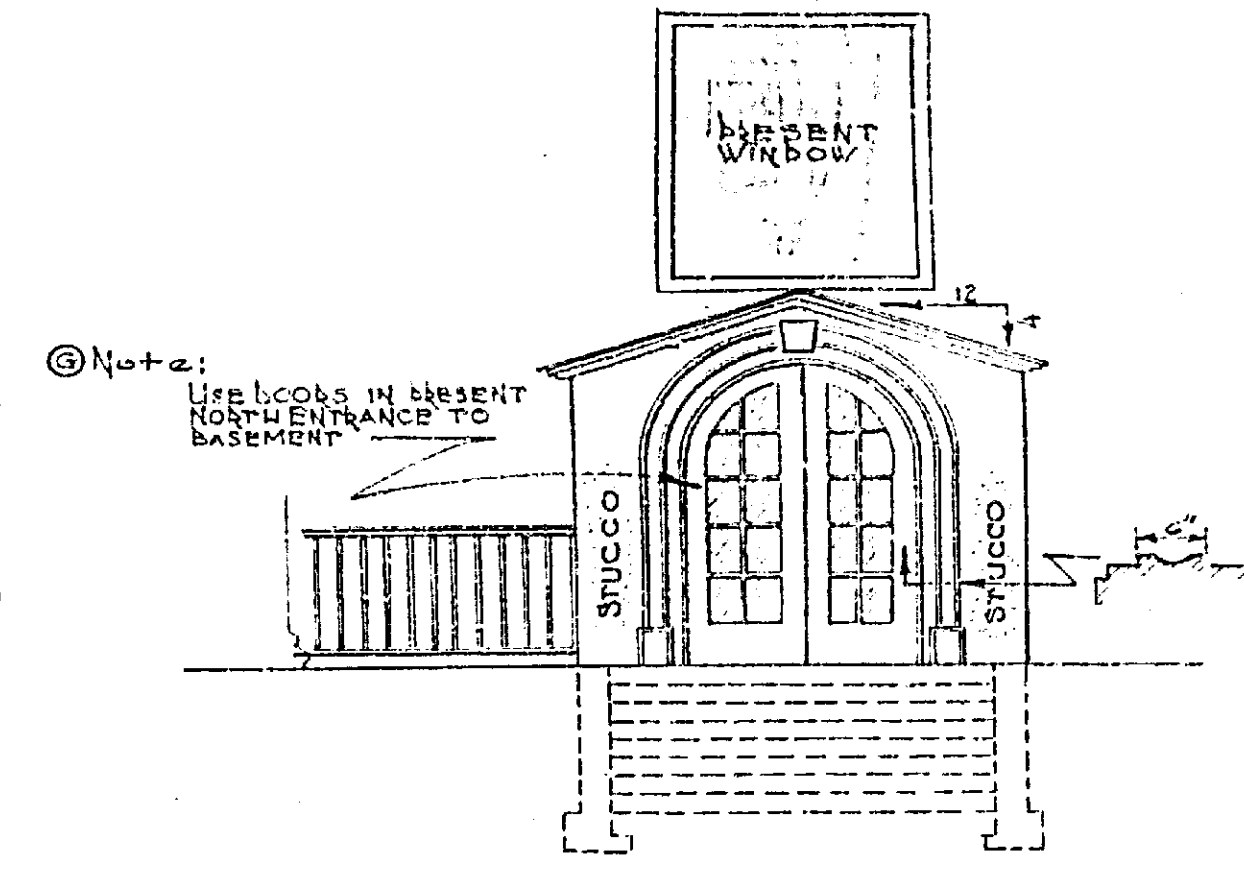


- LEGEND**
- EXISTING COLUMN
  - EXISTING PARTITION (TO BE REMOVED)
  - PARTITION TO BE REMOVED
  - EXISTING OPENING TO BE CLOSED



SCALE 1/4" = 1'-0"

**698**

ALTERATIONS TO CITY HALL  
RIVERSIDE, CALIF.  
**BASEMENT PLAN**

ENGINEERING DEPT. CITY OF RIVERSIDE

APPROVED *M. J. Irvine*  
CITY ENGINEER

DRAWN BY *[Signature]*  
TRACED BY *[Signature]*  
C.P.D. & APPROV. *[Signature]*

SHEET NO. 1  
OF 10 SHEETS

800



698

ALTERATIONS TO CITY HALL  
 RIVERSIDE, CALIF.  
**1ST FLOOR PLAN**

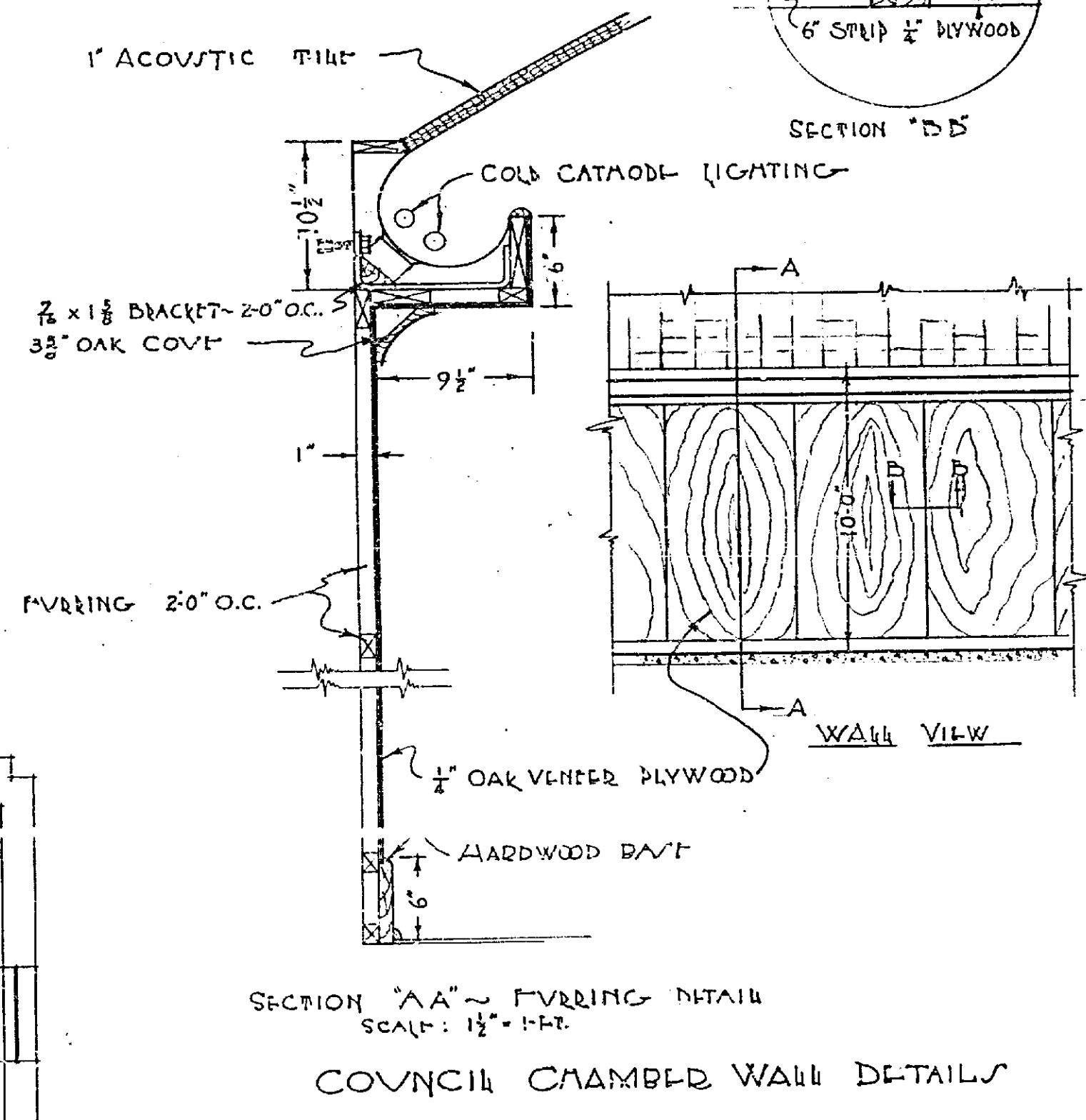
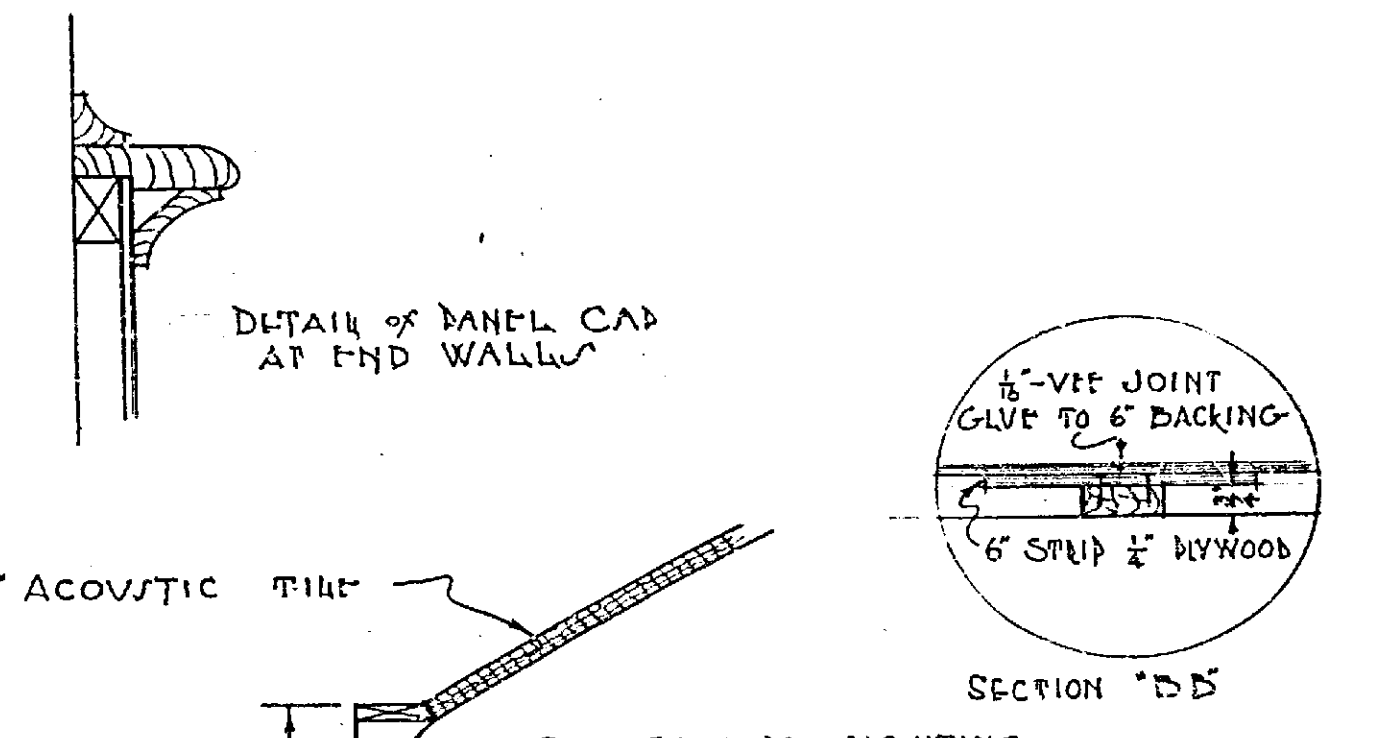
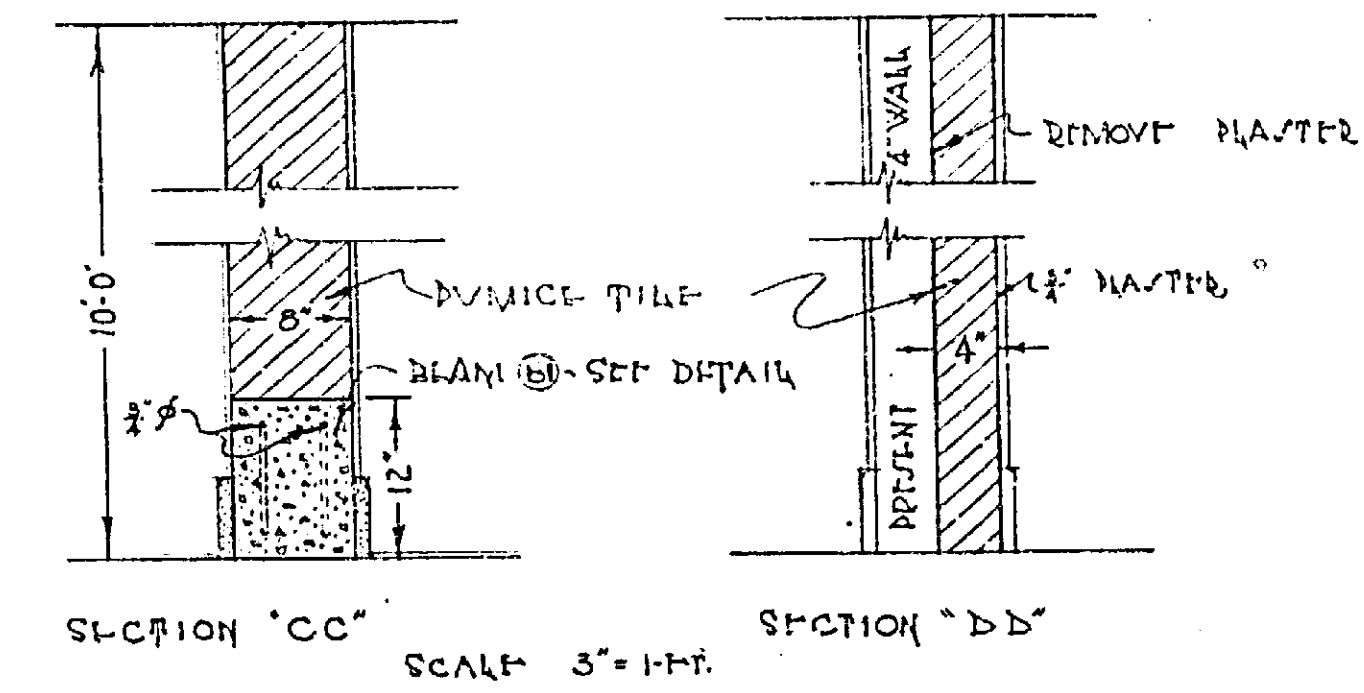
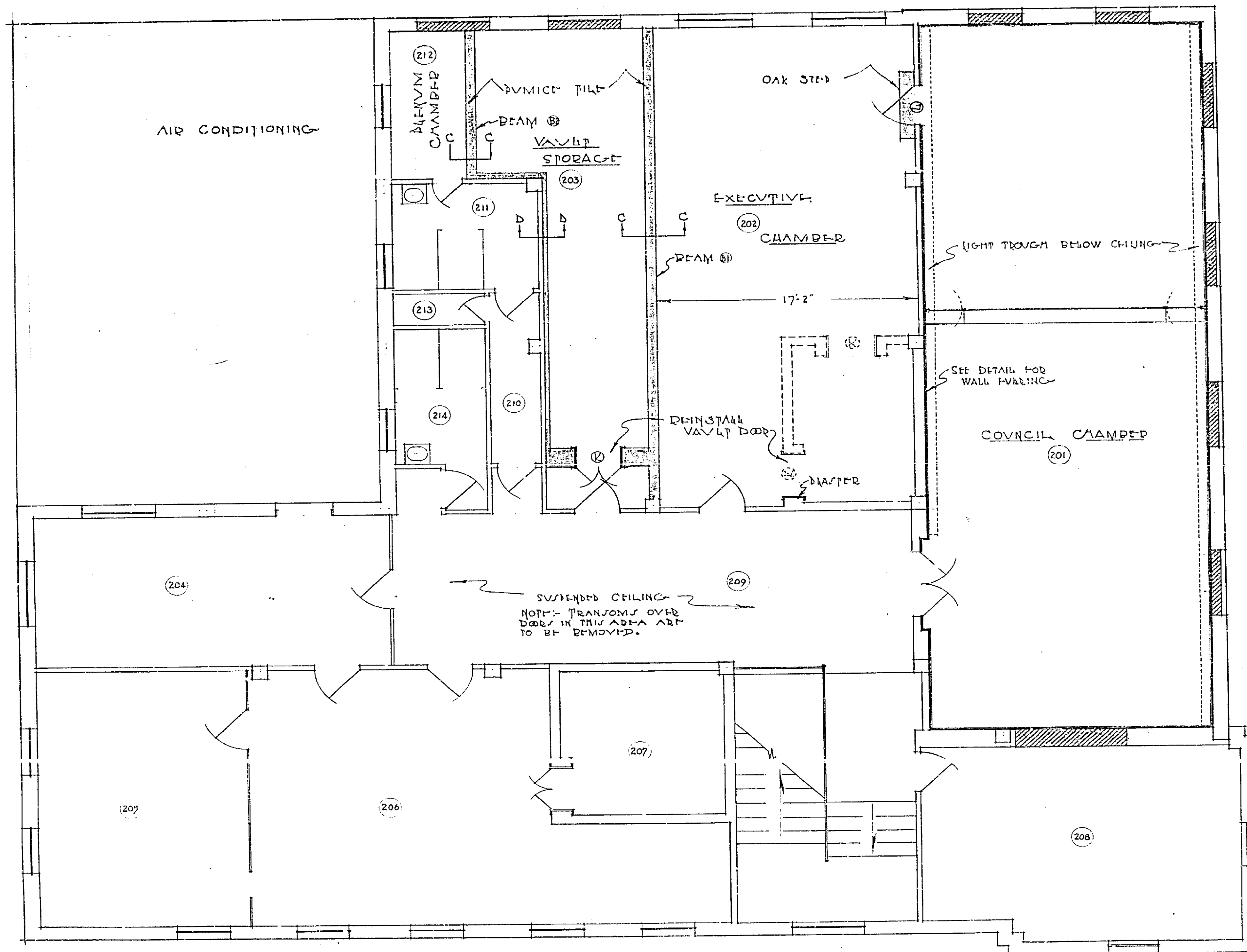
ENGINEERING DEPT, CITY OF RIVERSIDE

APPROVED *M. K. Quinn*  
 CITY ENGINEER

DRAWN BY *[Signature]*  
 TRACED BY *[Signature]*  
 CKD. & APPVD. *[Signature]*

SHEET NO  
 2  
 OF 10 SHTS.

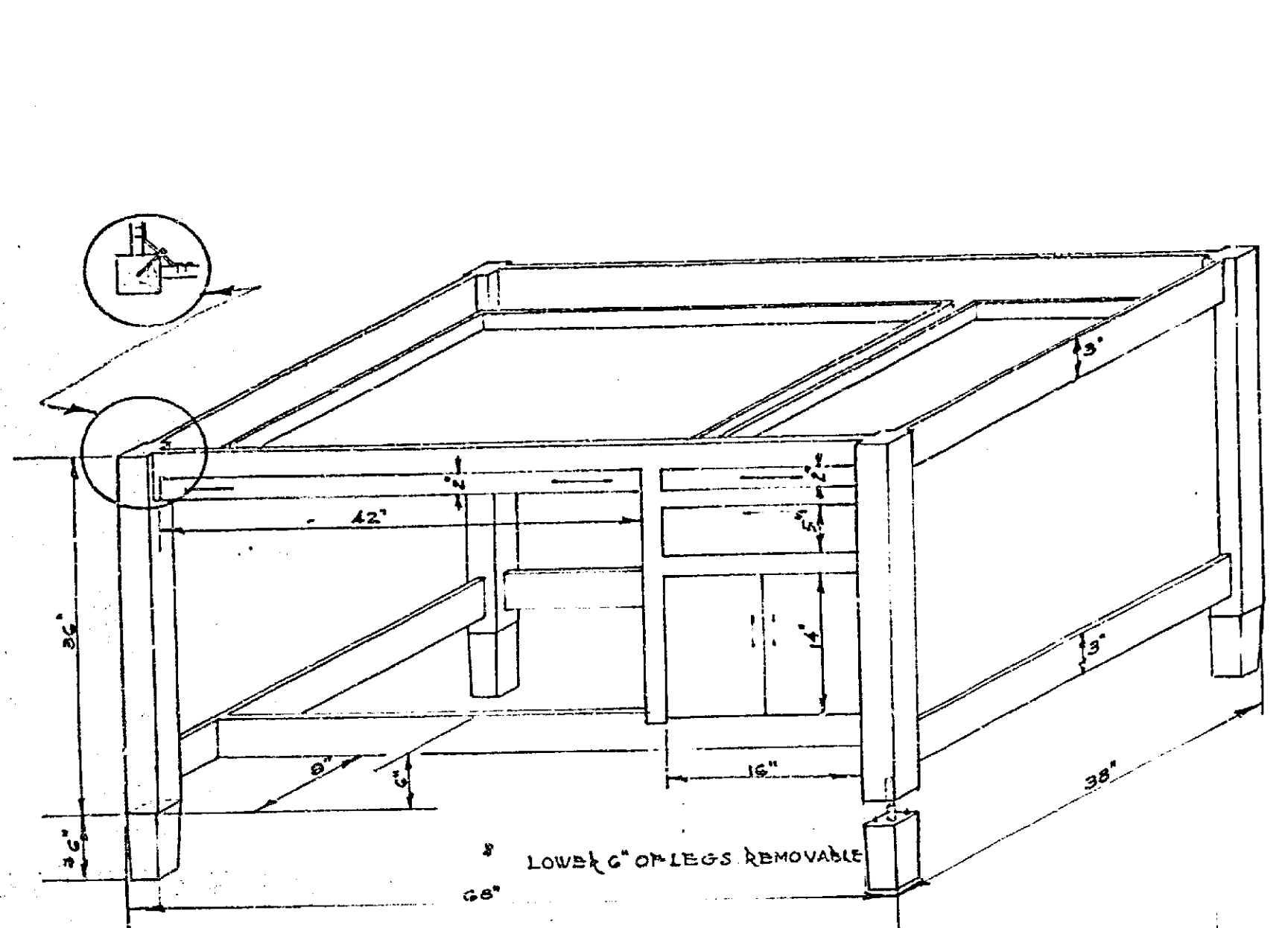
500



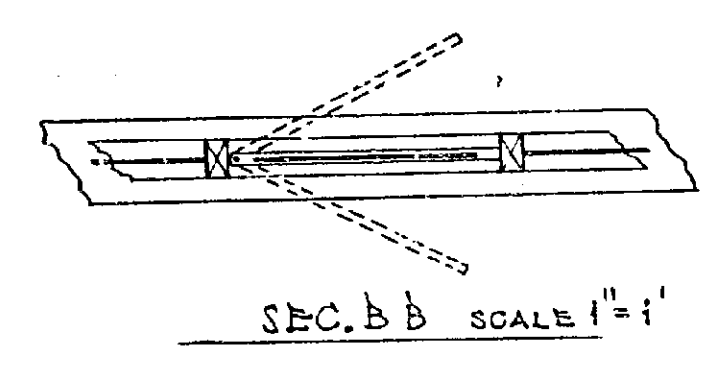
698

ALTERATIONS TO CITY HALL  
RIVERSIDE, CALIF.  
**2ND FLOOR PLAN**  
ENGINEERING DEPT. CITY OF RIVERSIDE  
APPROVED *M. N. Swine*  
CITY ENGINEER  
DRAWN BY *[Signature]*  
CHECKED BY *[Signature]*  
DATE APPROVED *[Signature]*  
SHEET NO. **3**  
OF 10 SHEETS

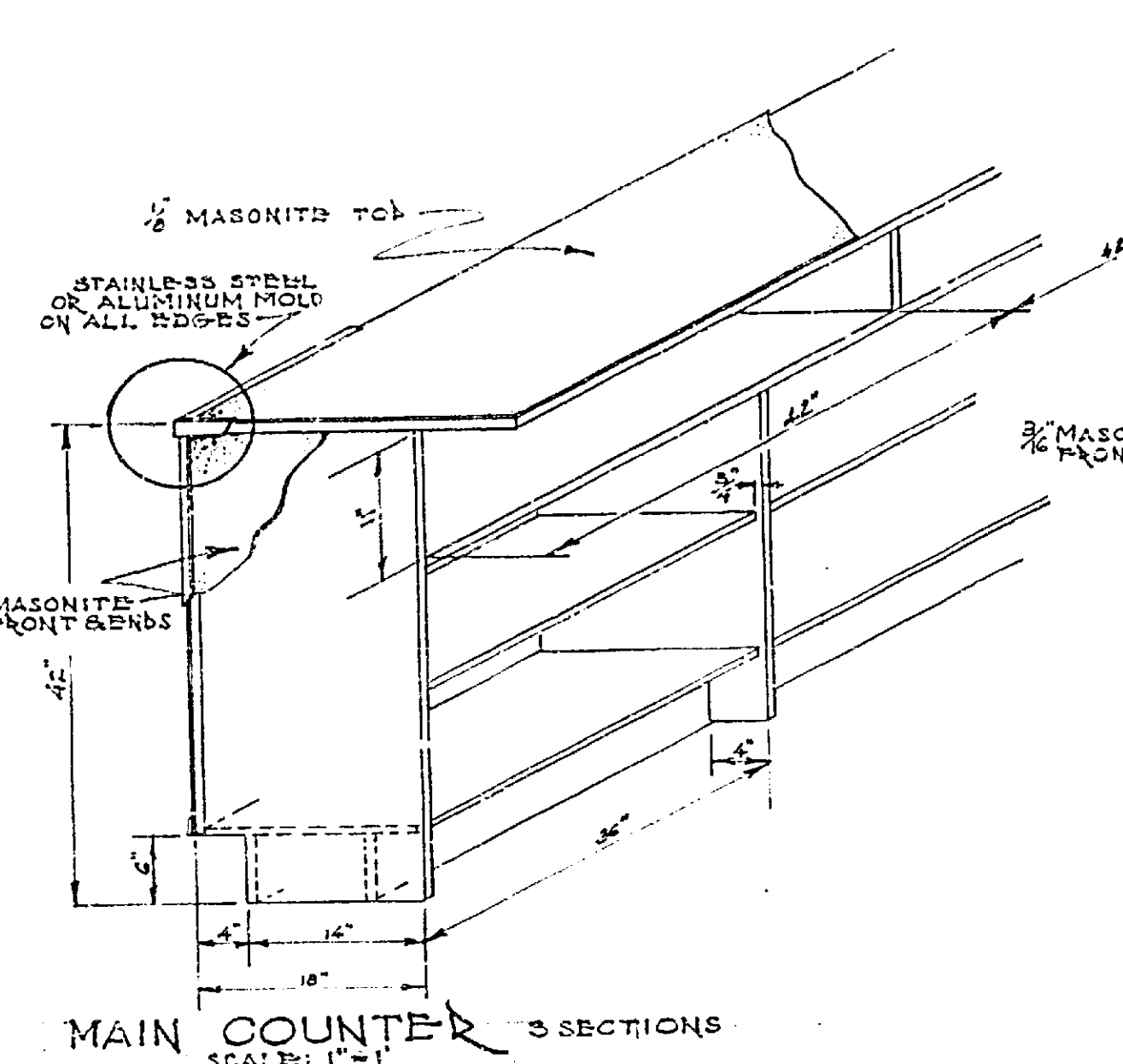
80



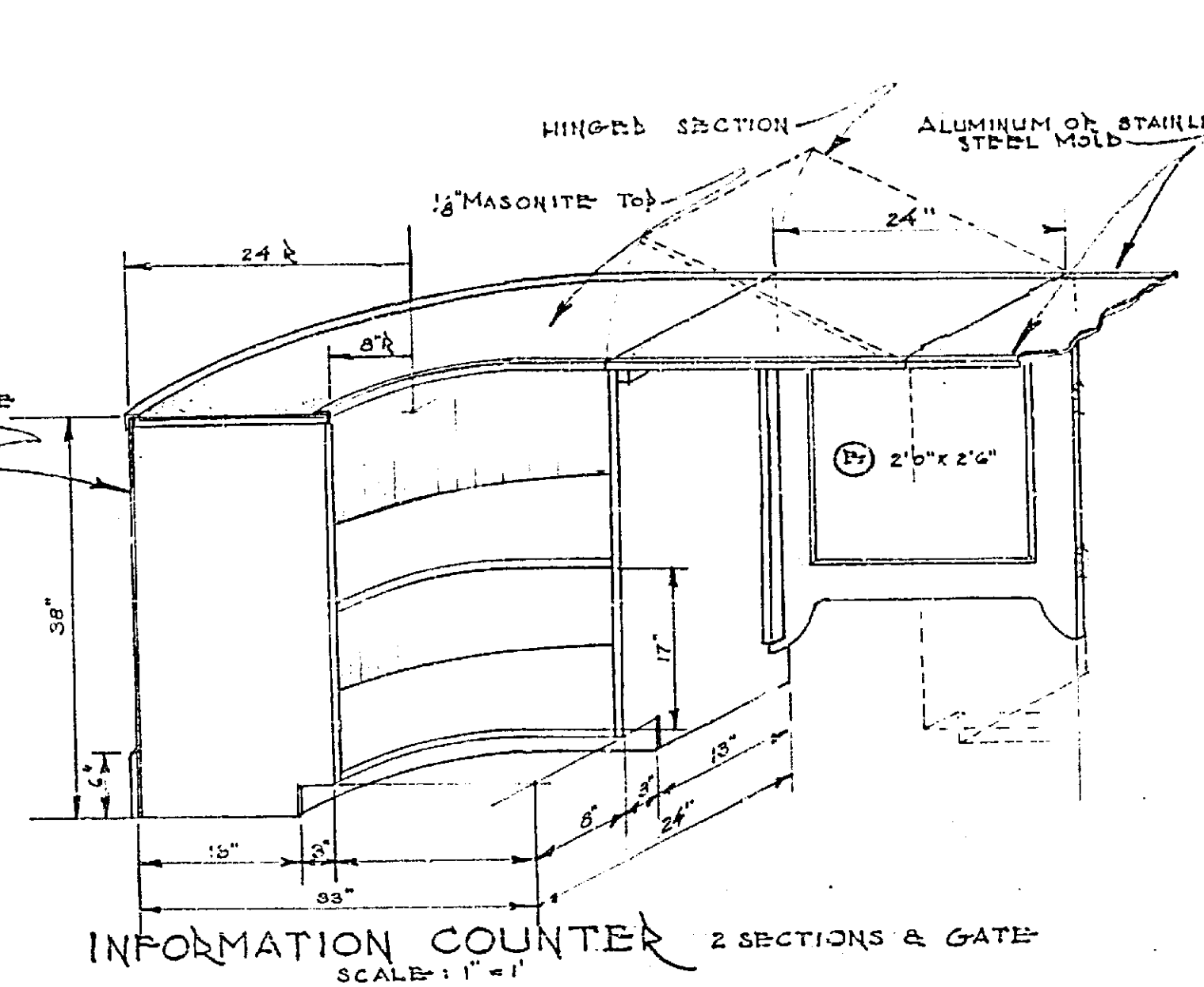
DRAFTING TABLE 3 REQUIRED  
SCALE: 1/2" = 1'



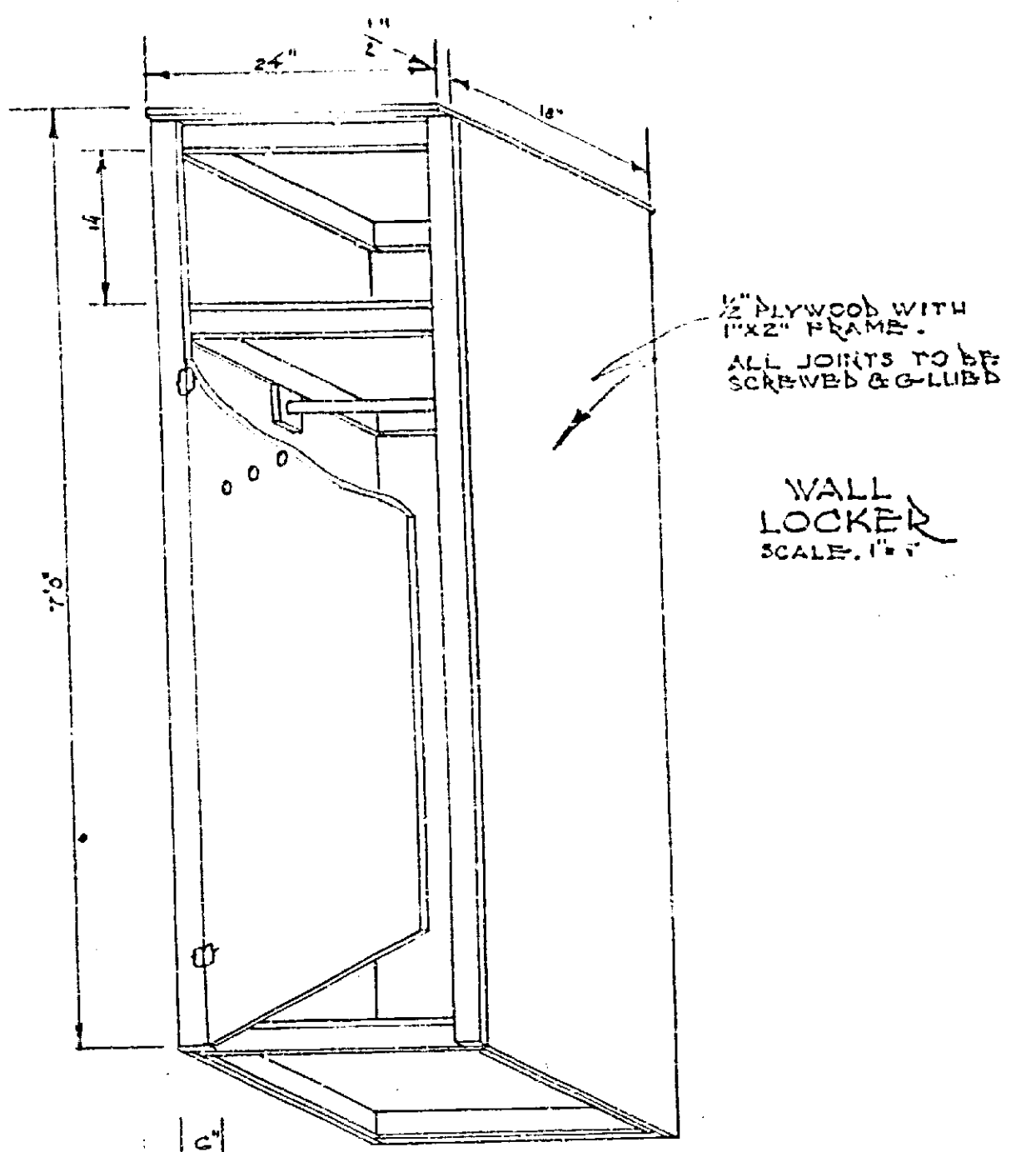
SEC. BB SCALE: 1" = 1'



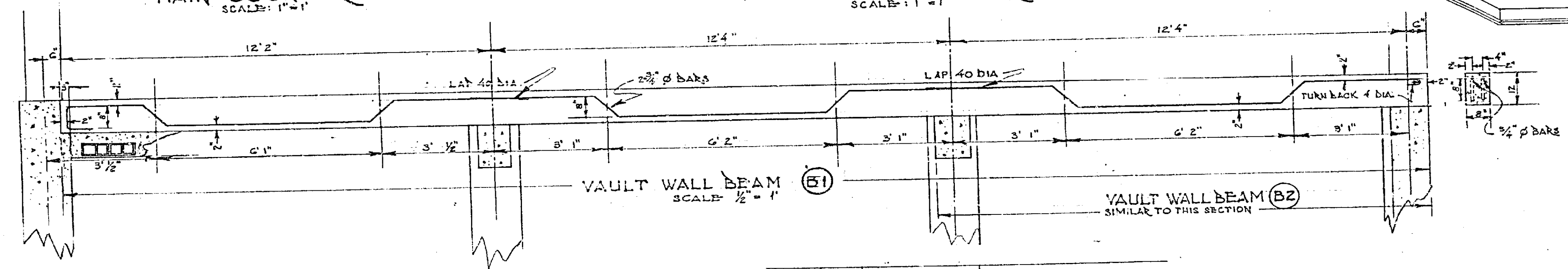
MAIN COUNTER 3 SECTIONS  
SCALE: 1" = 1'



INFORMATION COUNTER 2 SECTIONS & GATE  
SCALE: 1" = 1'

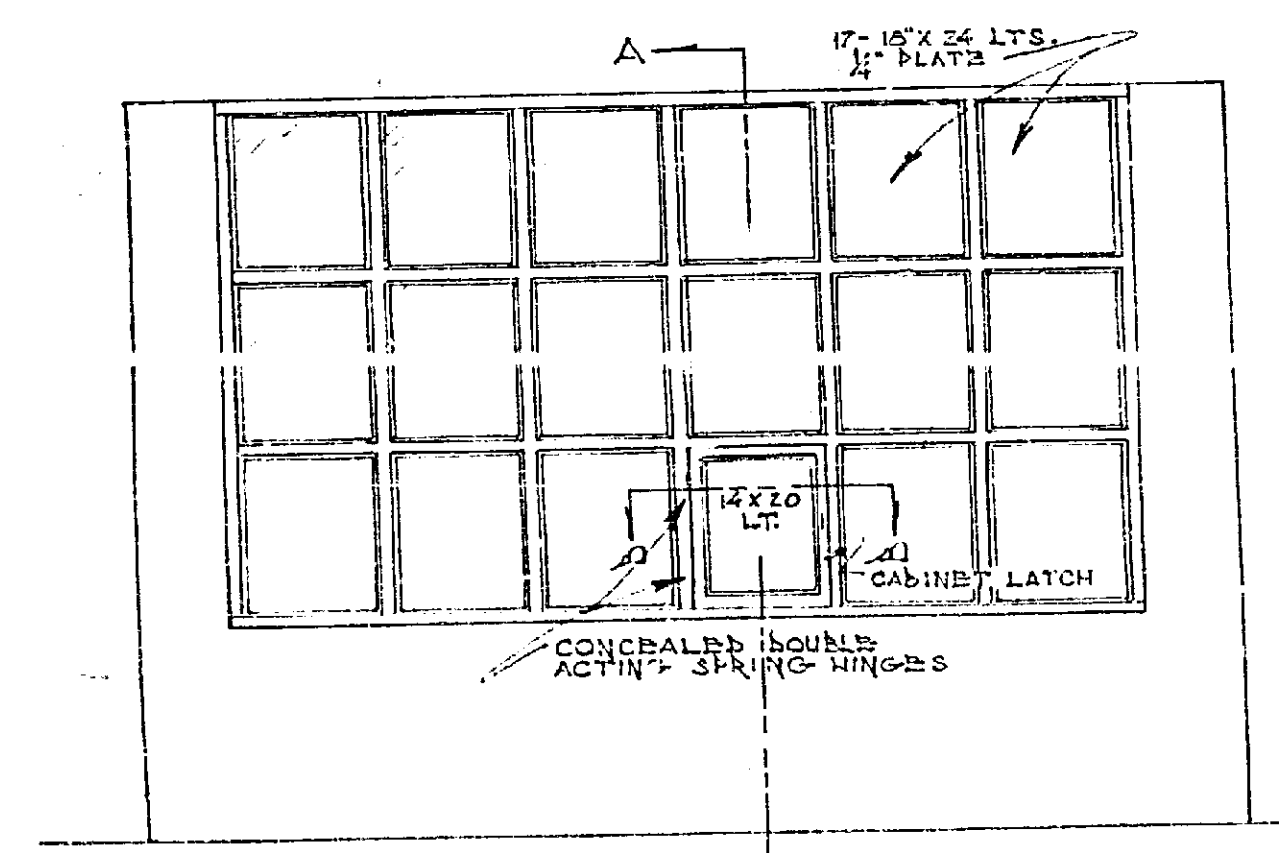


WALL LOCKER  
SCALE: 1" = 1'

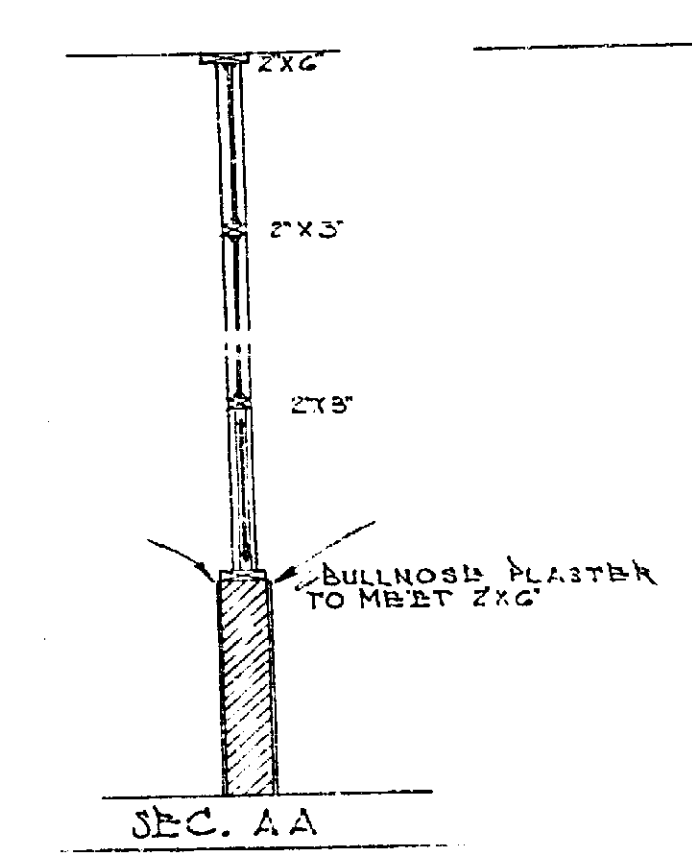


VAULT WALL BEAM (B1)  
SCALE: 1/2" = 1'

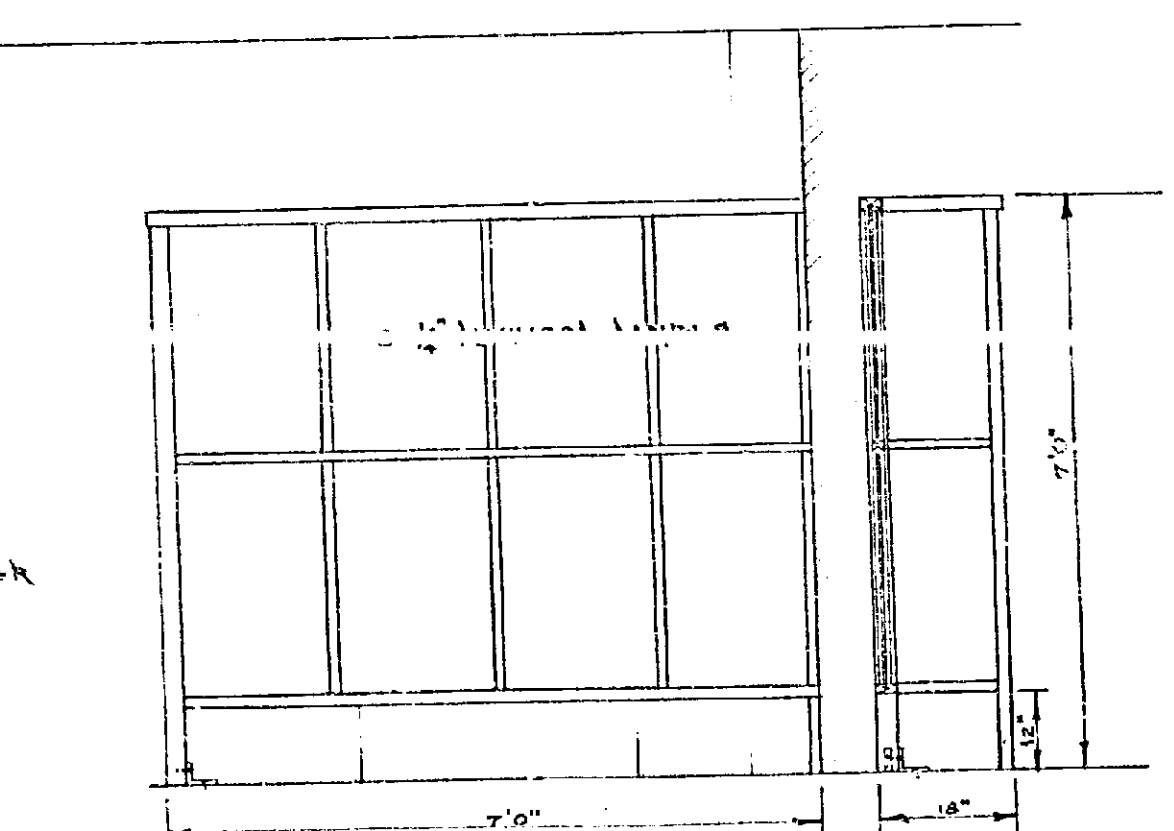
VAULT WALL BEAM (B2)  
SIMILAR TO THIS SECTION



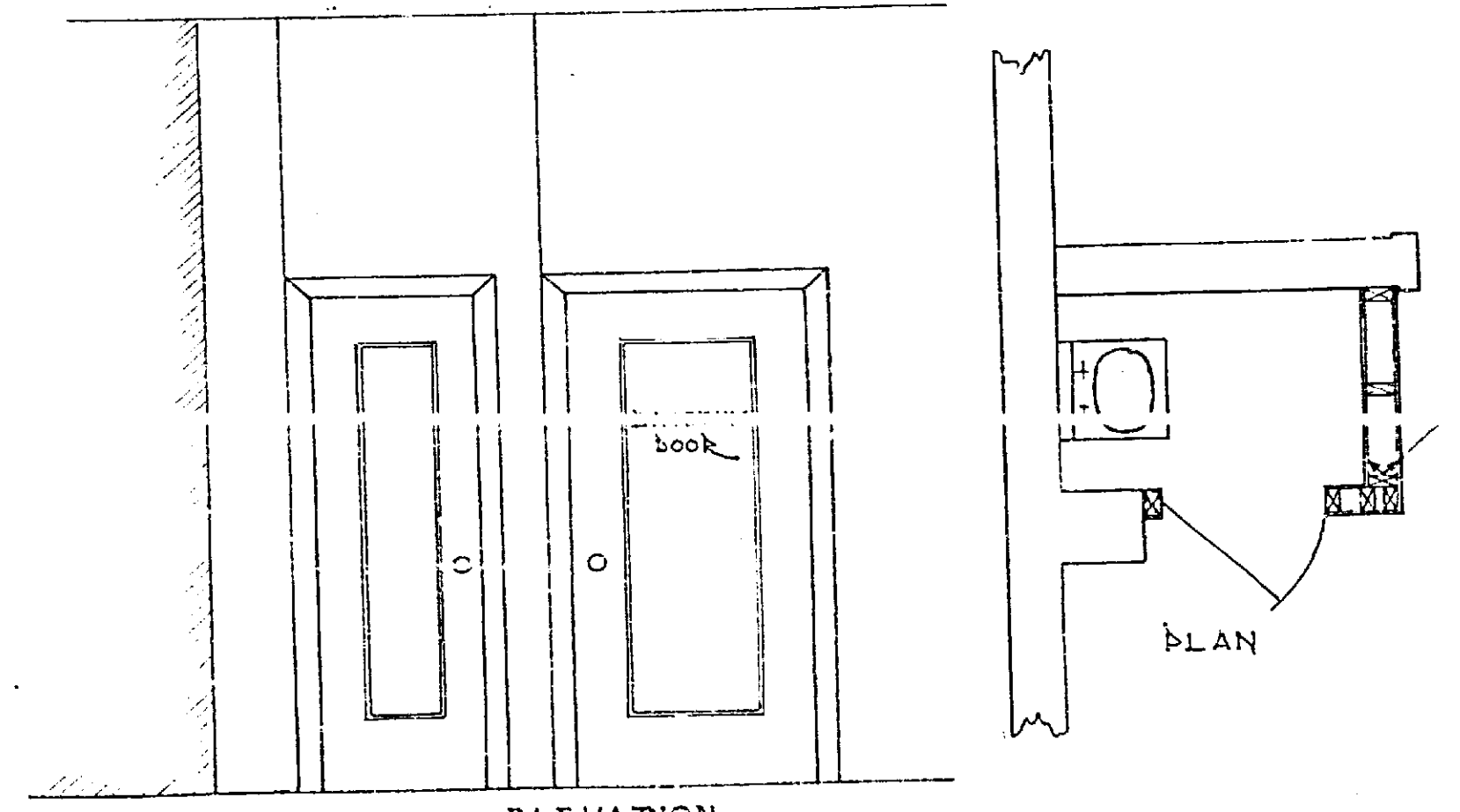
GLASS PARTITION IN DRAFTING ROOM  
SCALE: 1/2" = 1'



SEC. AA

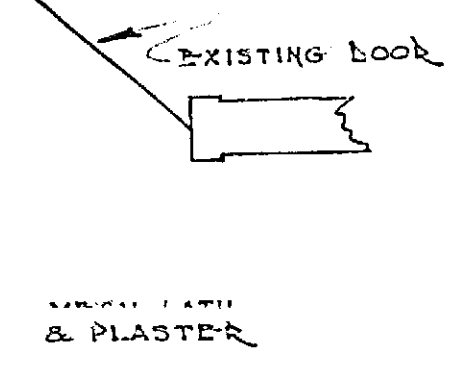


CURTAIN WALL IN LADIES LOUNGE  
SCALE: 1/2" = 1'



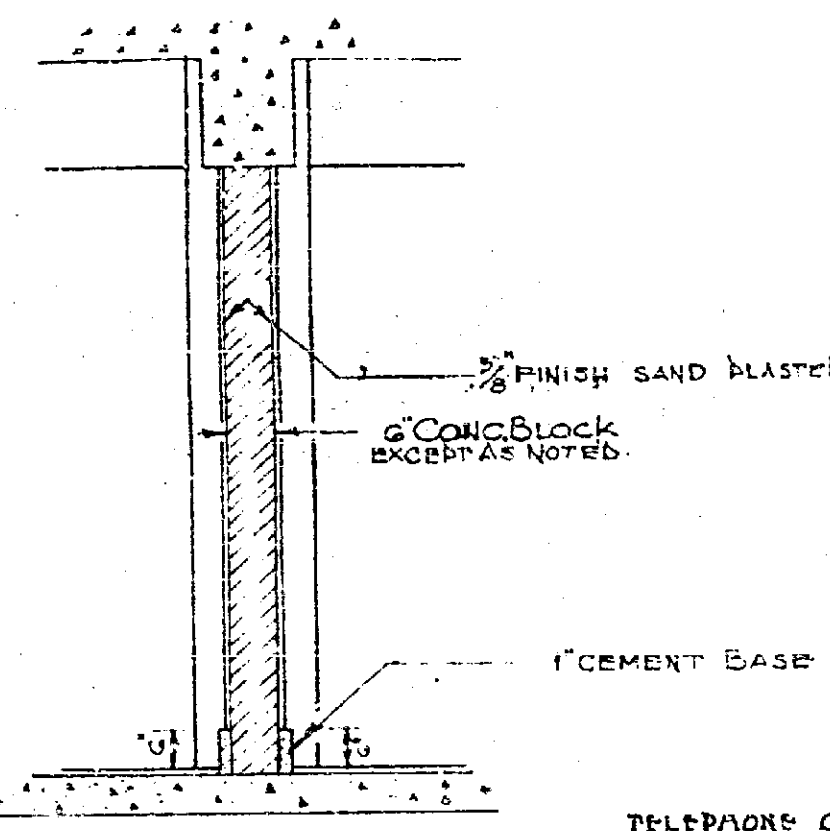
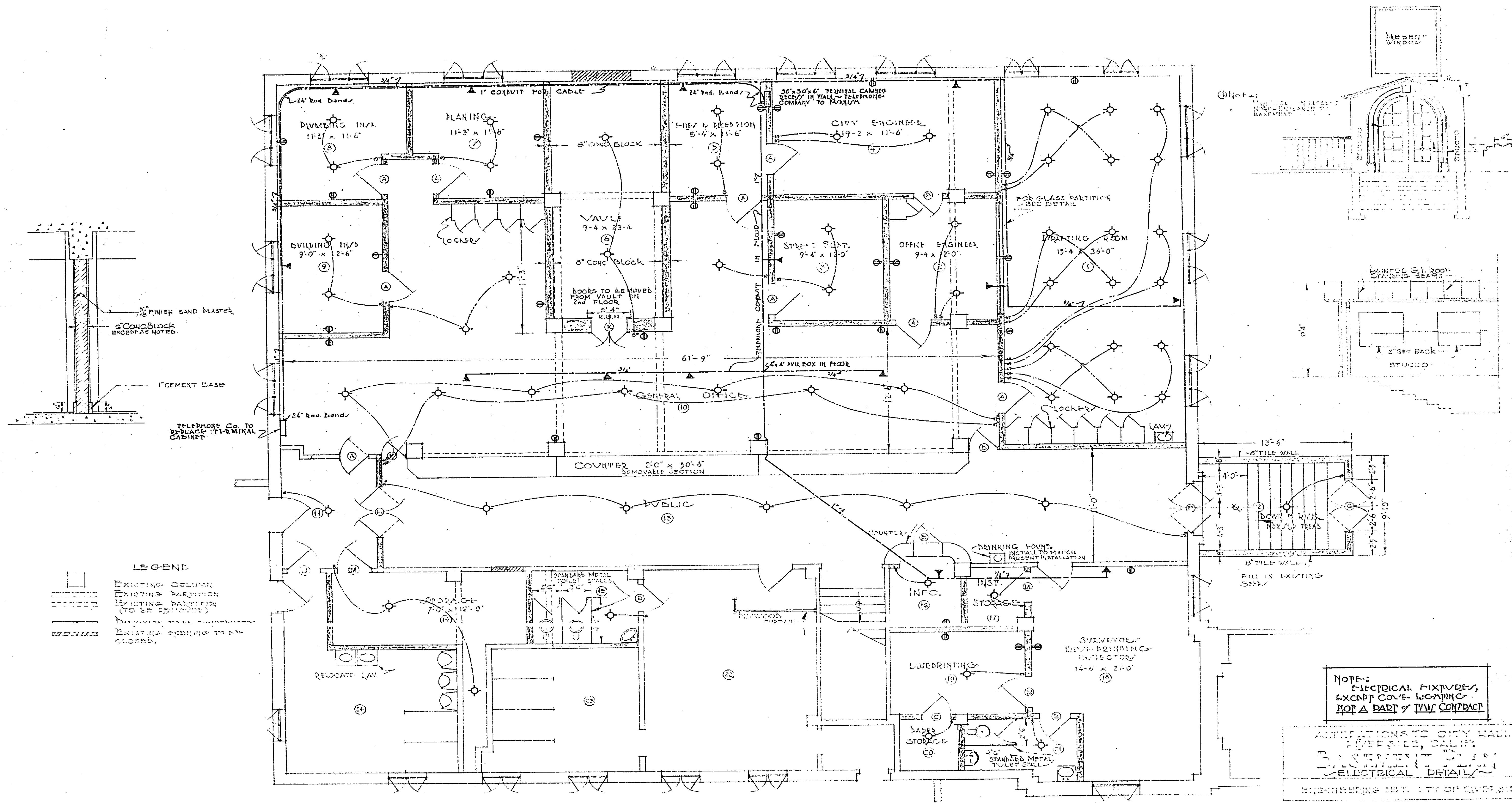
ELEVATION  
WASH ROOM IN MAYOR'S OFFICE  
SCALE: 1/2" = 1'

PLAN



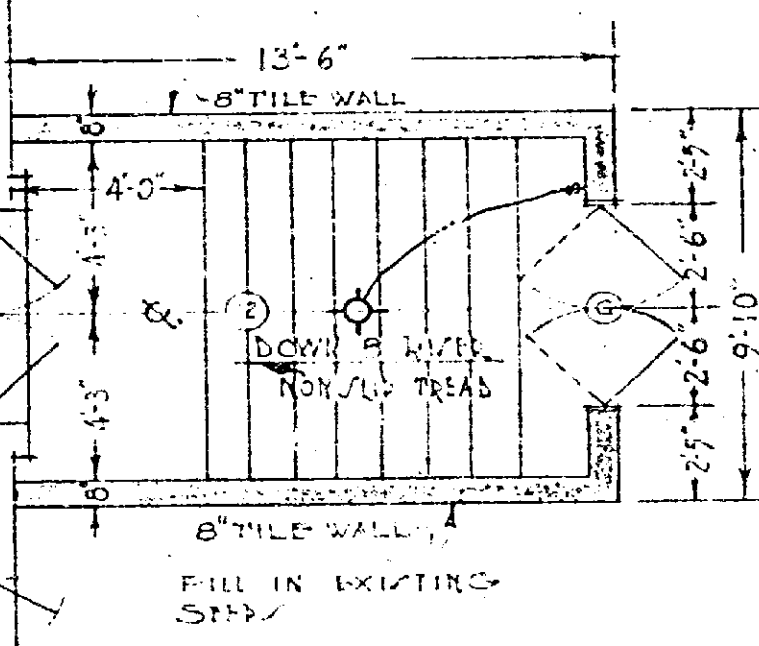
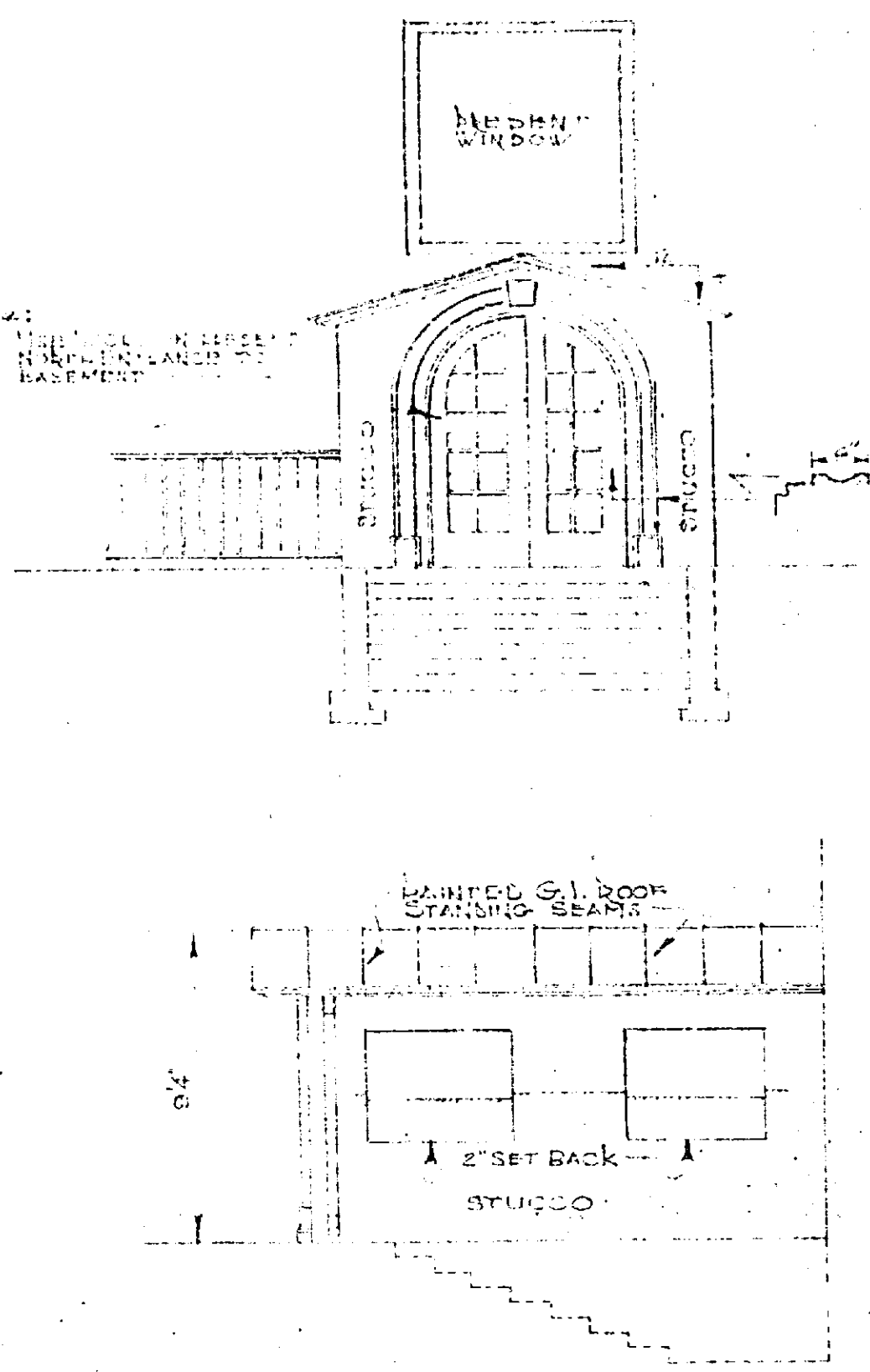
ALTERATIONS TO CITY HALL  
RIVERSIDE, CALIF.  
**DETAILS**  
ENGINEERING DEPT, CITY OF RIVERSIDE  
APPROVED *M. H. Swinn*  
CITY ENGINEER  
DRAWN BY *E. B. ...*  
TRACED BY *...*  
C.R.D. & APPROV. *...*  
SHEET NO. **4**  
OF 12 SHEETS

**698**



**LEGEND**

- EXISTING COLUMN
- EXISTING PARTITION (TO BE REMOVED)
- NEW PARTITION
- EXISTING OPENING TO BE CLOSED



NOTES:  
ELECTRICAL FIXTURES,  
EXCEPT COVER LIGHTING,  
NOT A PART OF THIS CONTRACT

AMENDMENTS TO CITY HALL  
FLOOR PLAN, BLDG.  
BASEMENT PLAN  
ELECTRICAL DETAIL

ENGINEERING DIV. CITY OF RIVERSIDE  
APPROVED: *M. H. Swine*  
DATE: 11/11/28

REVISION  
① SHOWING SIZE OF TEL. CONDUIT 3/16"

SCALE 1/8" = 1'-0"

698



NOTE: ELECTRICAL FIXTURES EXCEPT COVE LIGHTING NOT PART OF THIS CONTRACT.

ALTERATIONS TO CITY HALL  
RIVERSIDE, CALIF.  
**1ST FLOOR PLAN**  
ELECTRICAL DETAILS

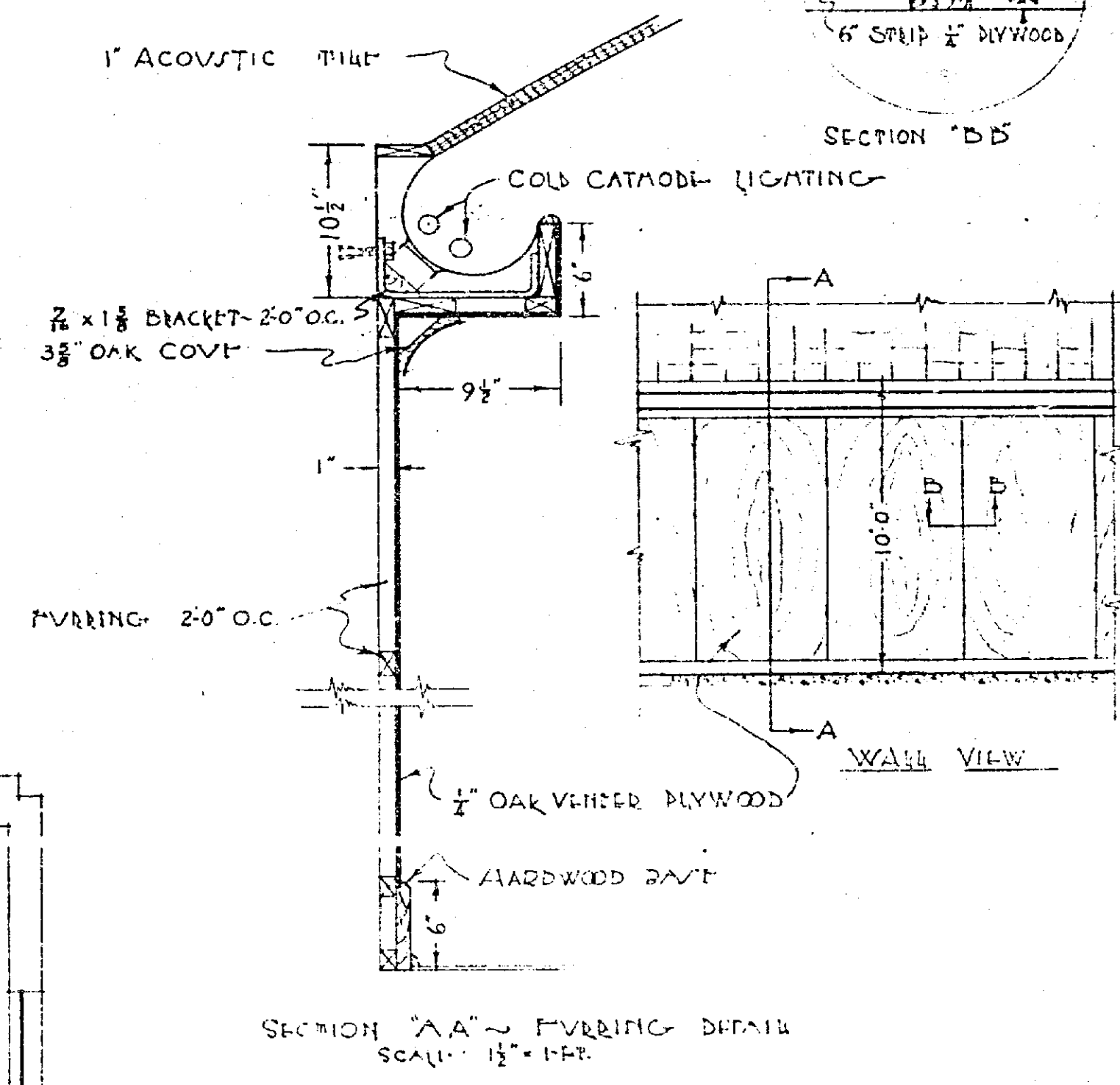
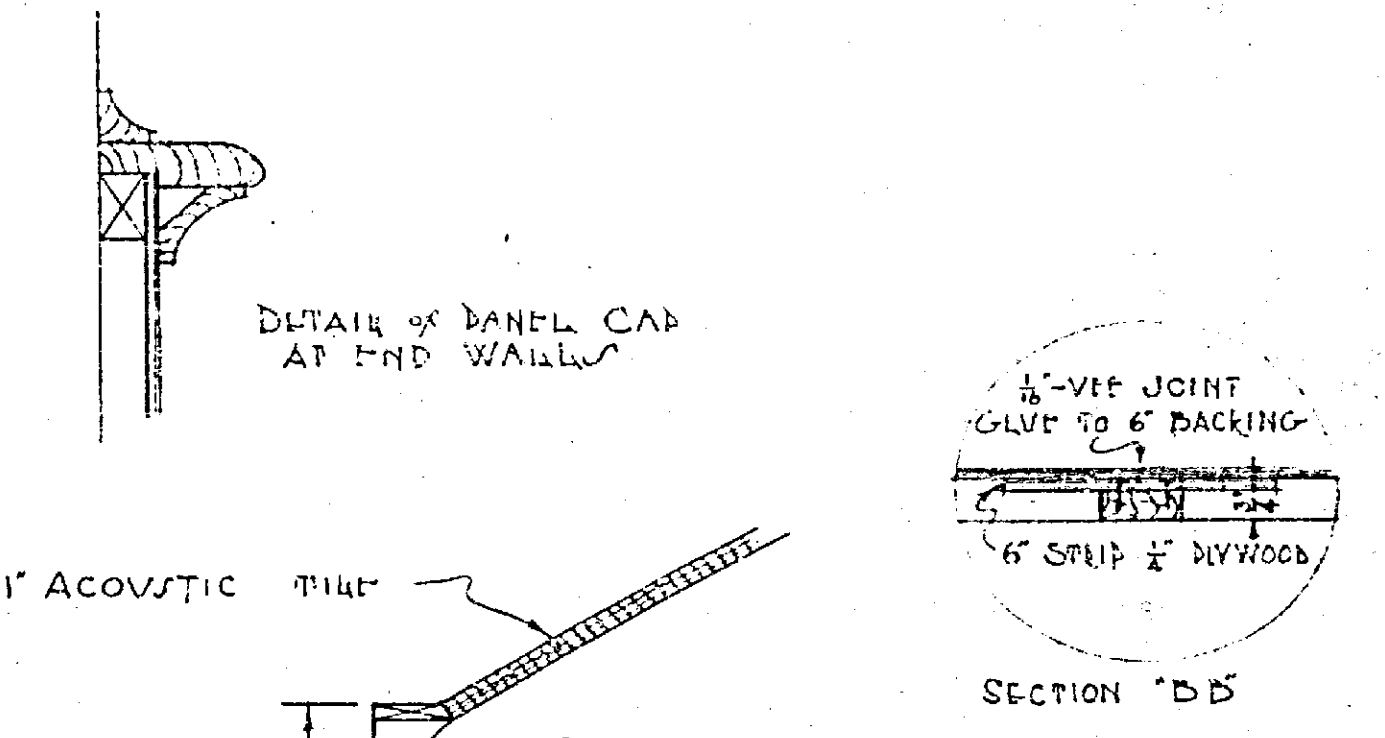
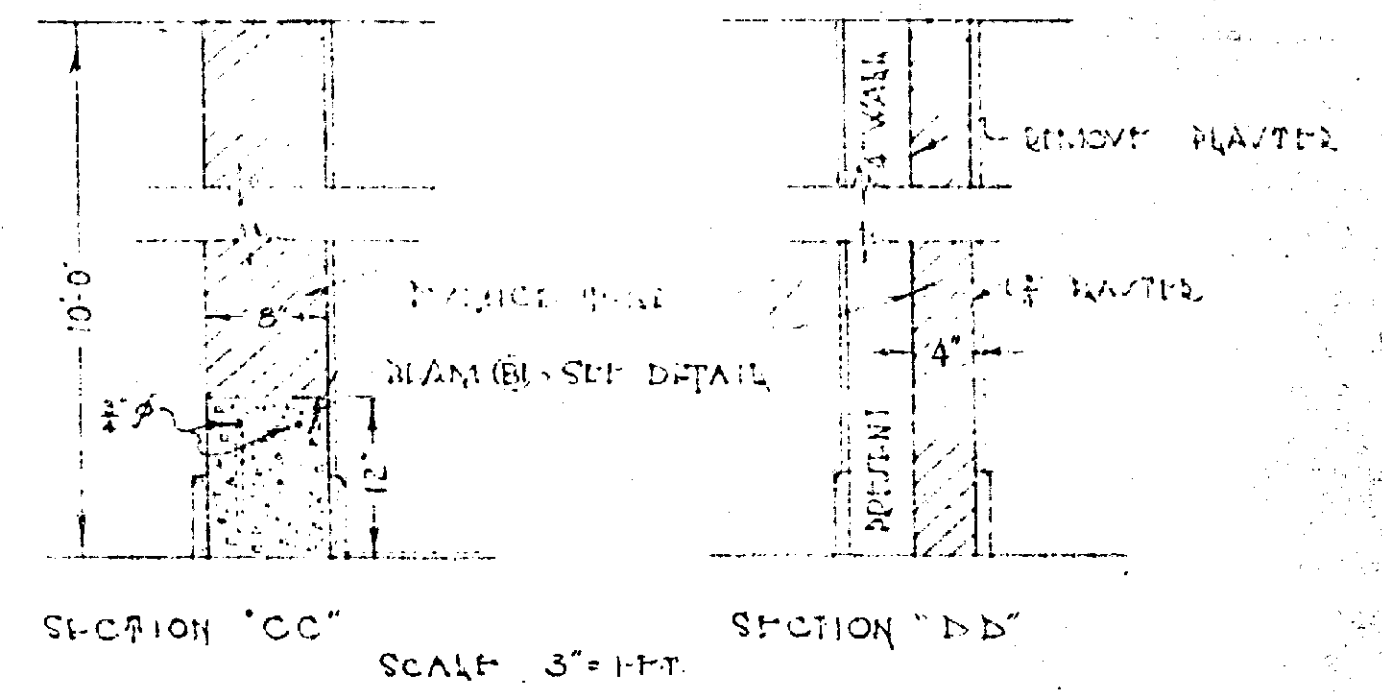
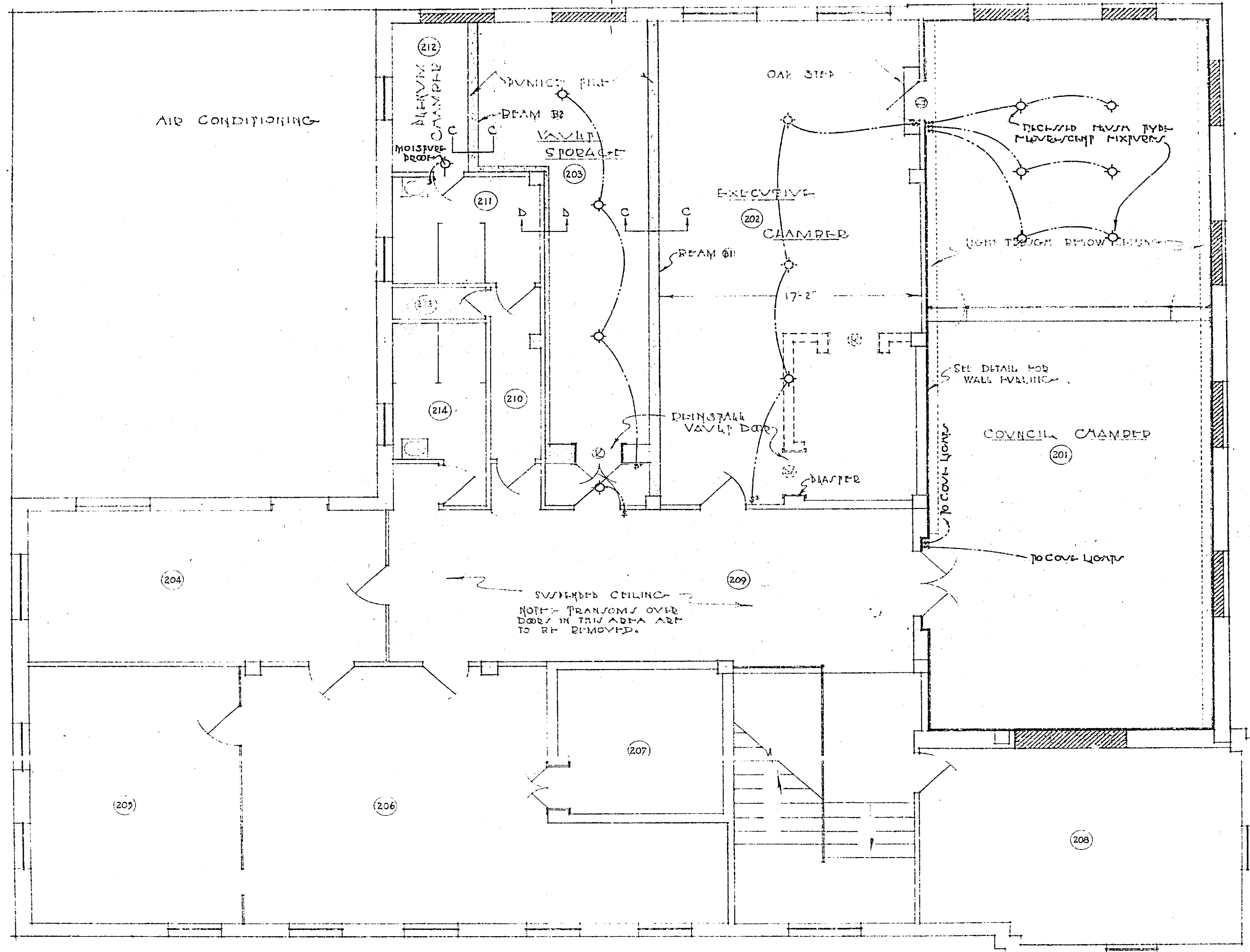
ENGINEERING DEPT. CITY OF RIVERSIDE

APPROVED *M. H. Irvine*  
CITY ENGINEER

DRAWN BY *[Signature]*  
TRACED BY *[Signature]*  
C.K.S. & ASSY. ARCHT.

SHEET NO. 0  
OF 10 SHEETS

**698**

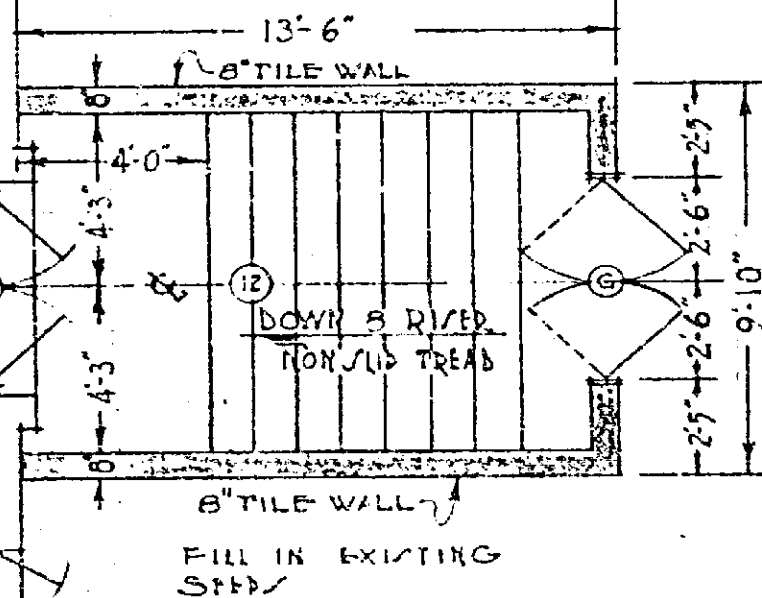
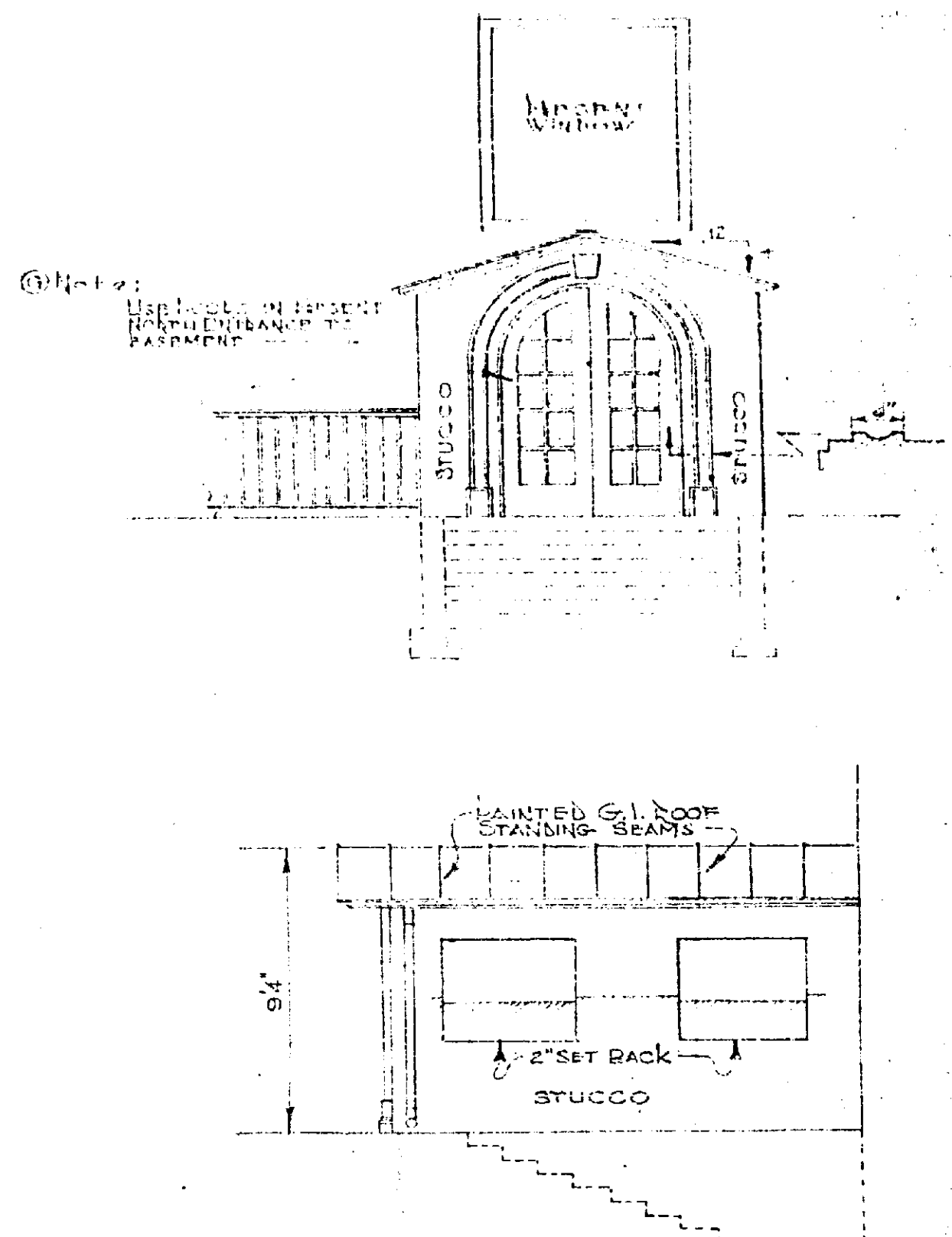
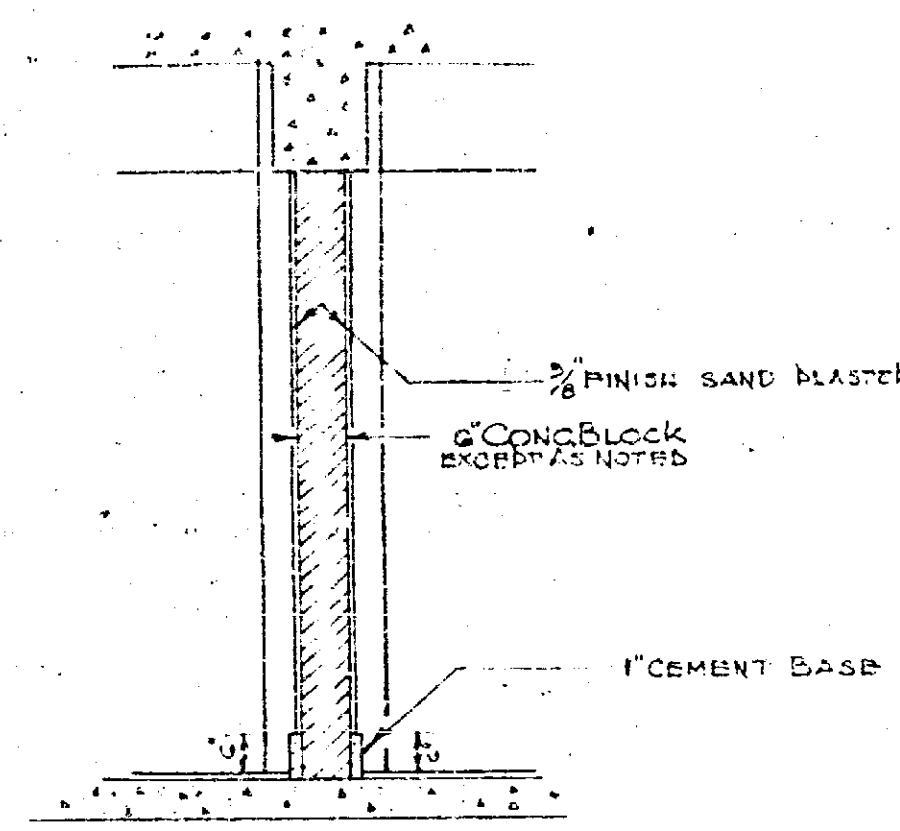
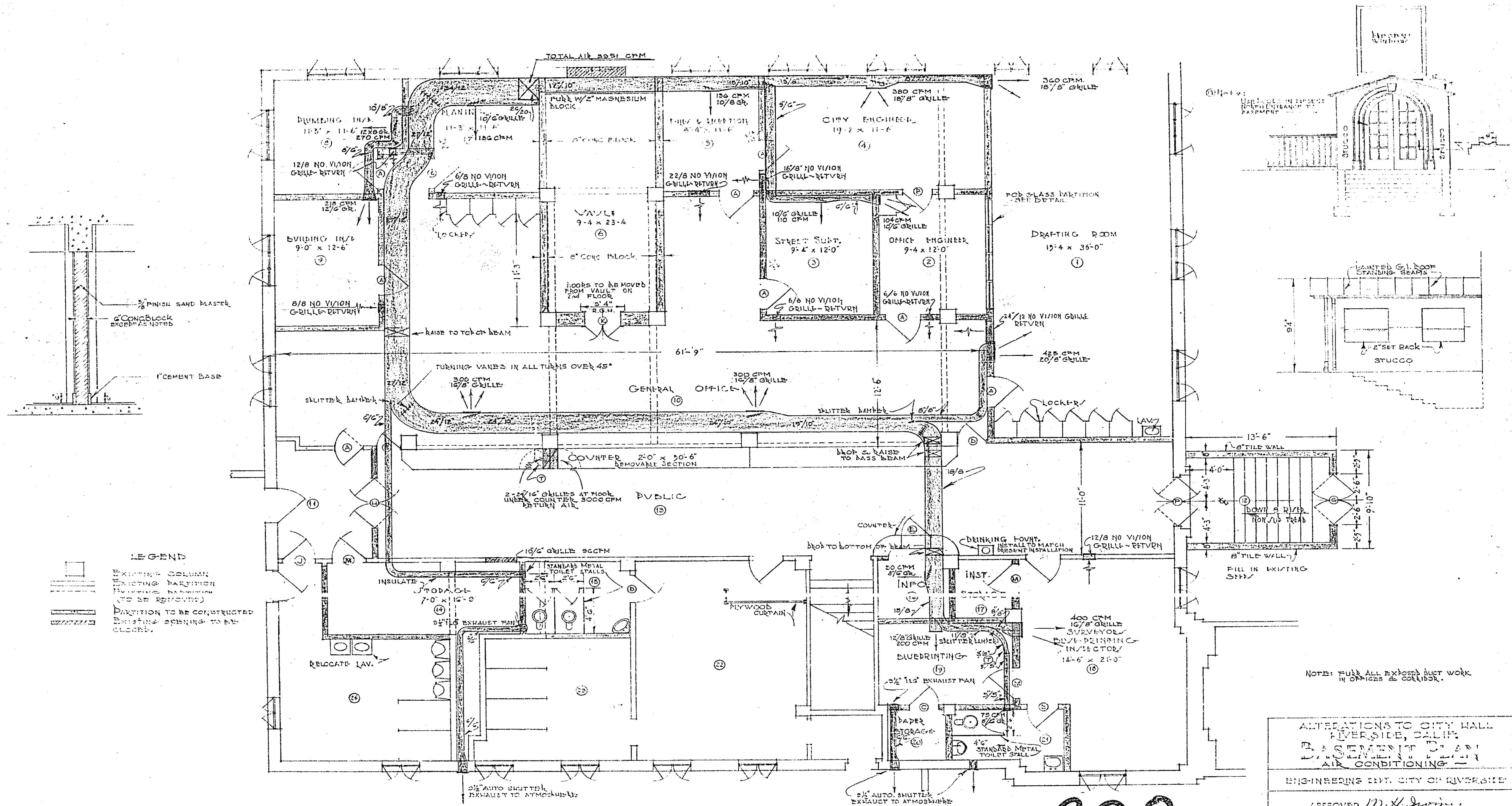


NOTE:  
ELECTRICAL MIXTURES,  
EXCEPT COVER LIGHTING,  
NOT A PART OF THIS CONTRACT

ALTERATIONS TO CITY HALL,  
RIVERSIDE, CALIF.  
**2ND FLOOR PLAN**  
ELECTRICAL DETAILS  
ENGINEERING DEPT. CITY OF RIVERSIDE  
APPROVED *M. McDevine*  
CITY ENGINEER  
DRAWN BY *[Signature]*  
CHECKED BY *[Signature]*  
DATE *[Date]*  
SHEET NO. *7*  
OF 10 SHEETS

883

698



**LEGEND**

- EXISTING COLUMN
- EXISTING PARTITION (TO BE REMOVED)
- PARTITION TO BE CONSTRUCTED
- EXISTING OPENING TO BE CLOSED

NOTE: FILL ALL EXPOSED DUCT WORK IN OFFICES & CORRIDOR.

ALTERATIONS TO CITY HALL  
RIVERSIDE, CALIF.  
BASEMENT PLAN  
AIR CONDITIONING

ENGINEERING DEPT. CITY OF RIVERSIDE

APPROVED *M. J. ...*  
CITY ENGINEER

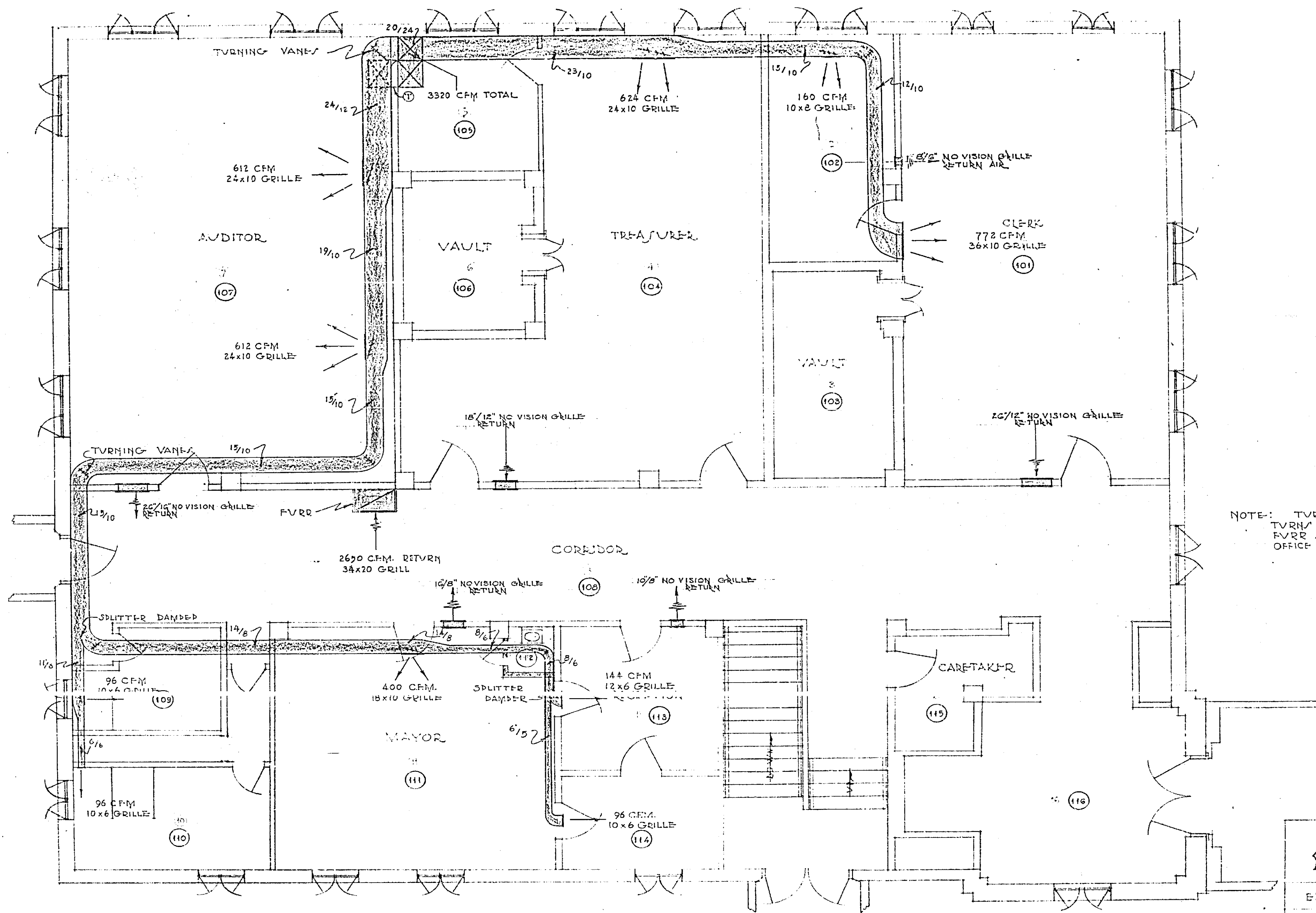
DRAWN BY *[Signature]*  
CHECKED BY *[Signature]*  
DATE APPROVED *[Date]*

SHEET NO. 8  
OF 10 SHEETS

SCALE 1/4" = 1'-0"

698





NOTE: TURNING VANES ON ALL  
 TURNS OVER 45°  
 FVRR ALL EXPOSED DVCTS IN  
 OFFICE AREA

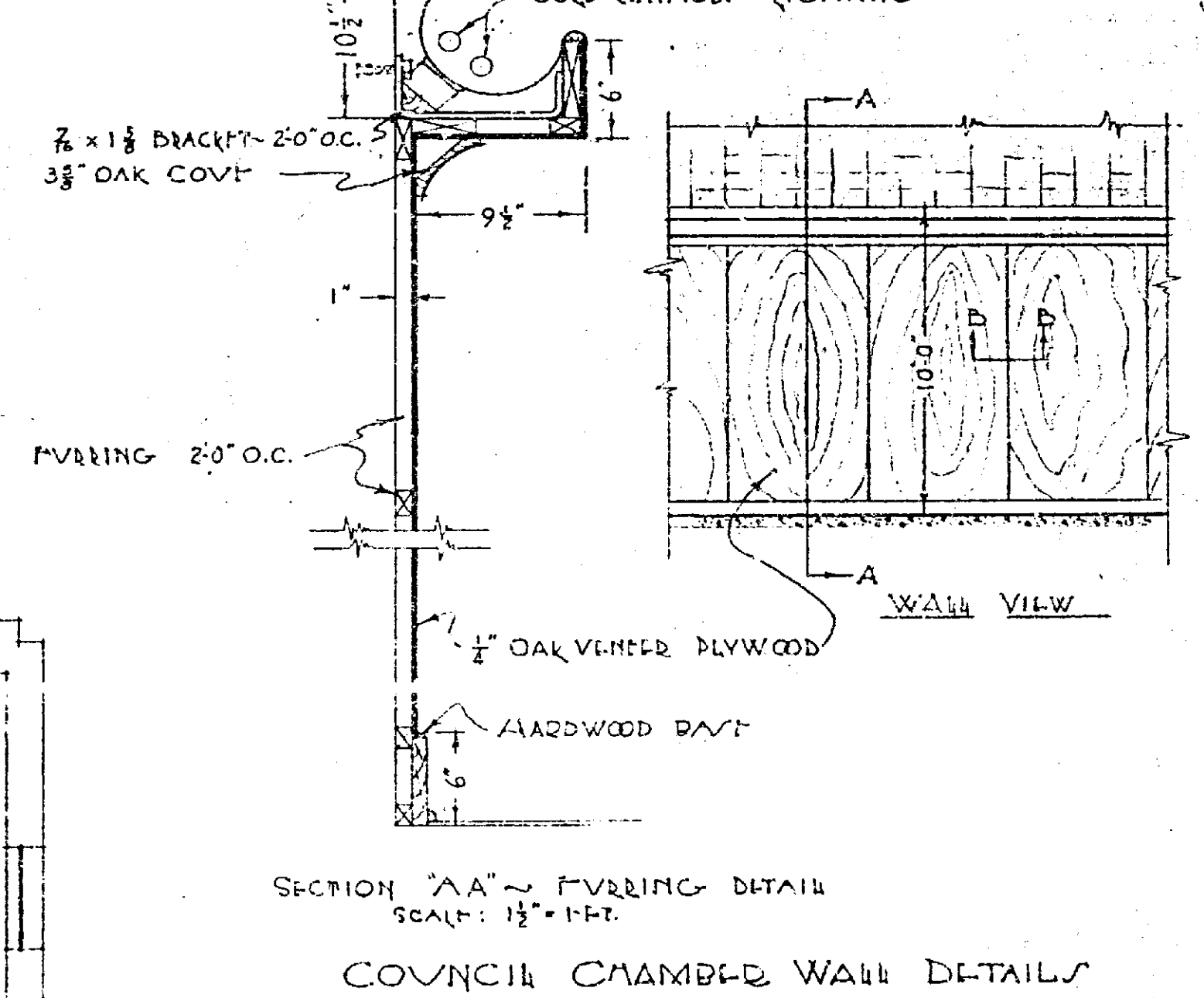
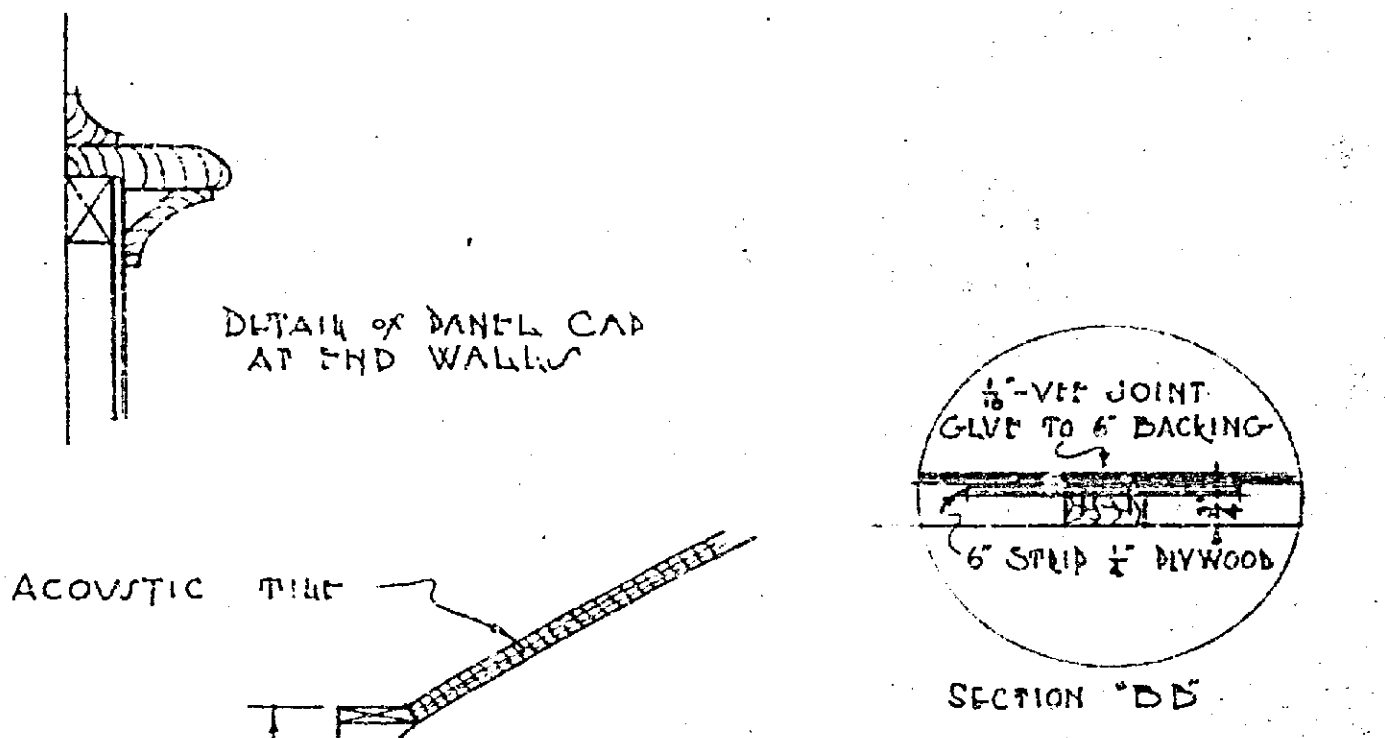
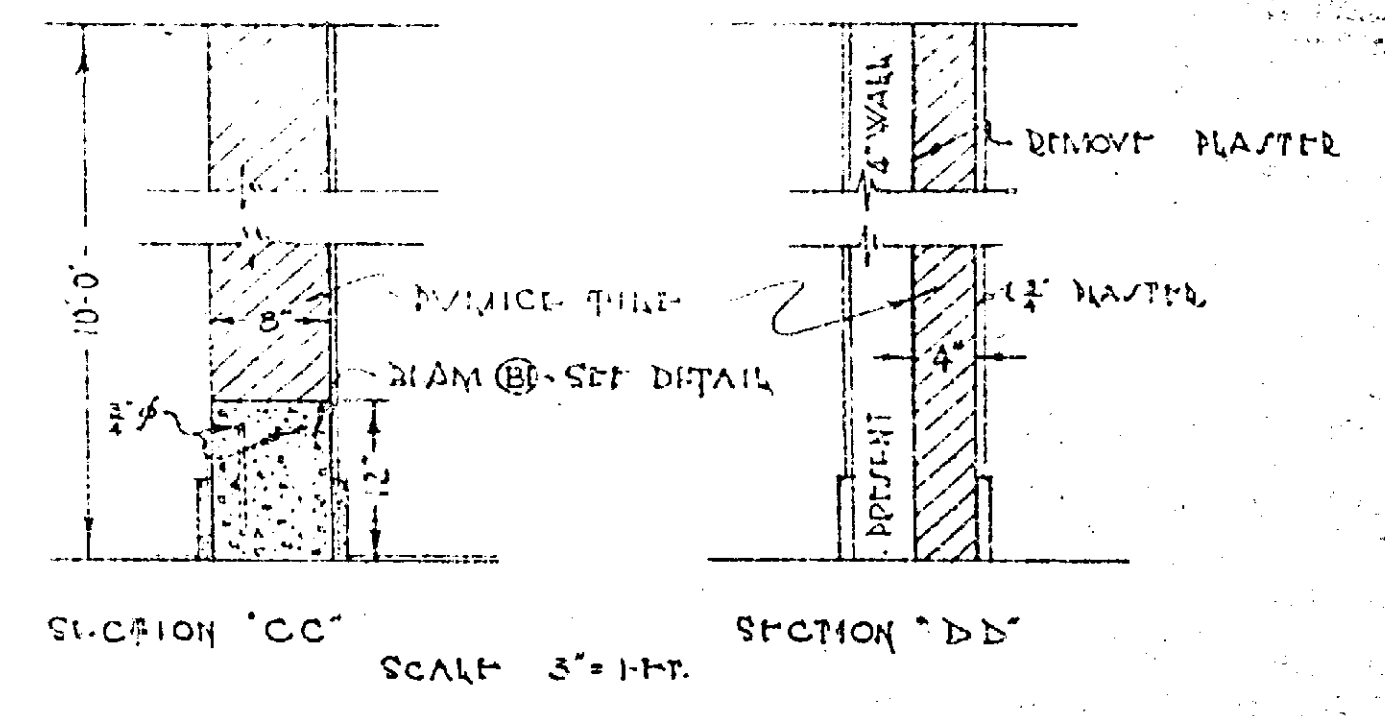
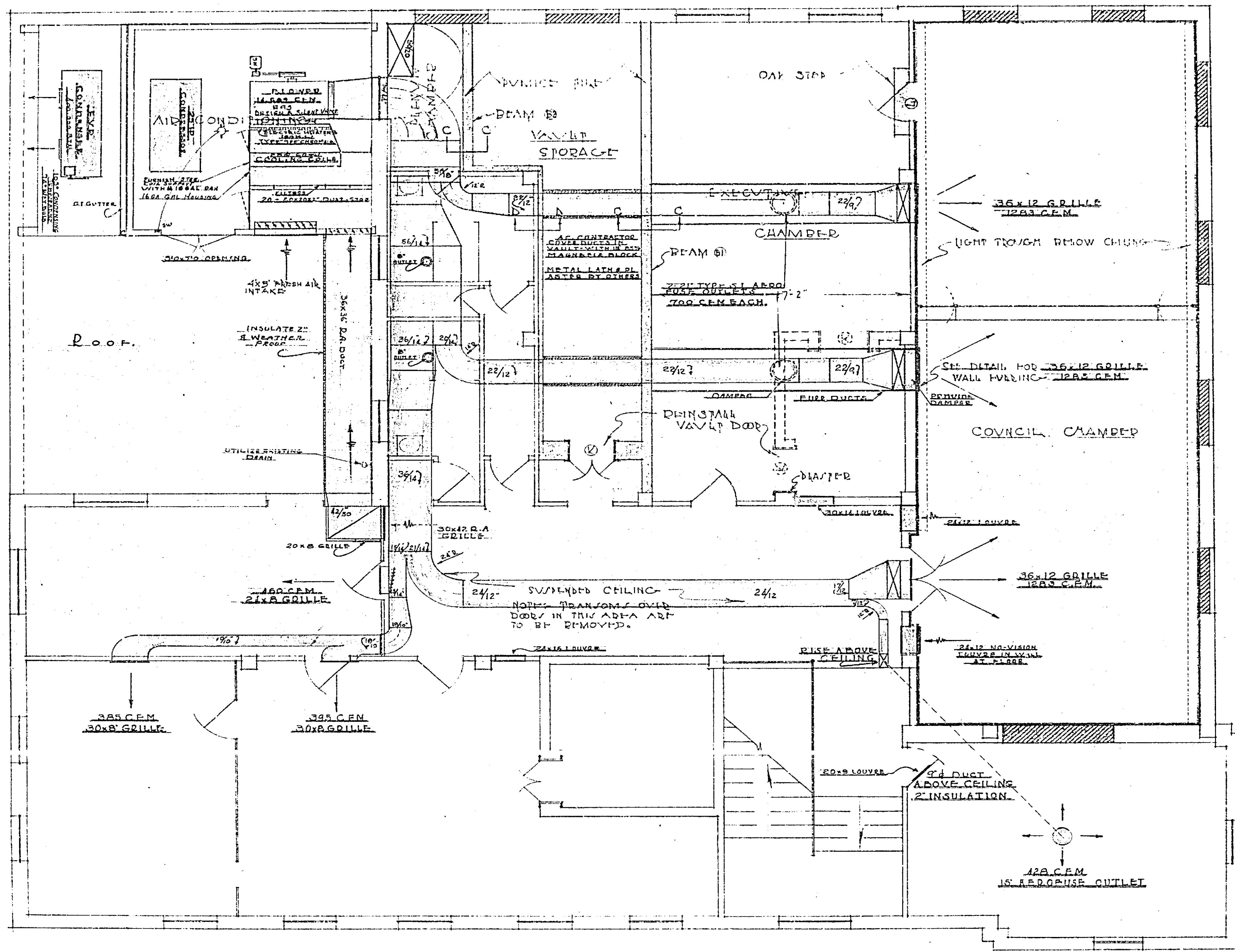
698

ALTERATIONS TO CITY HALL  
 RIVERSIDE, CALIF.  
**1ST FLOOR PLAN**  
 AIR CONDITIONING  
 ENGINEERING DEPT, CITY OF RIVERSIDE

APPROVED *M. X. Irvine*  
 CITY ENGINEER

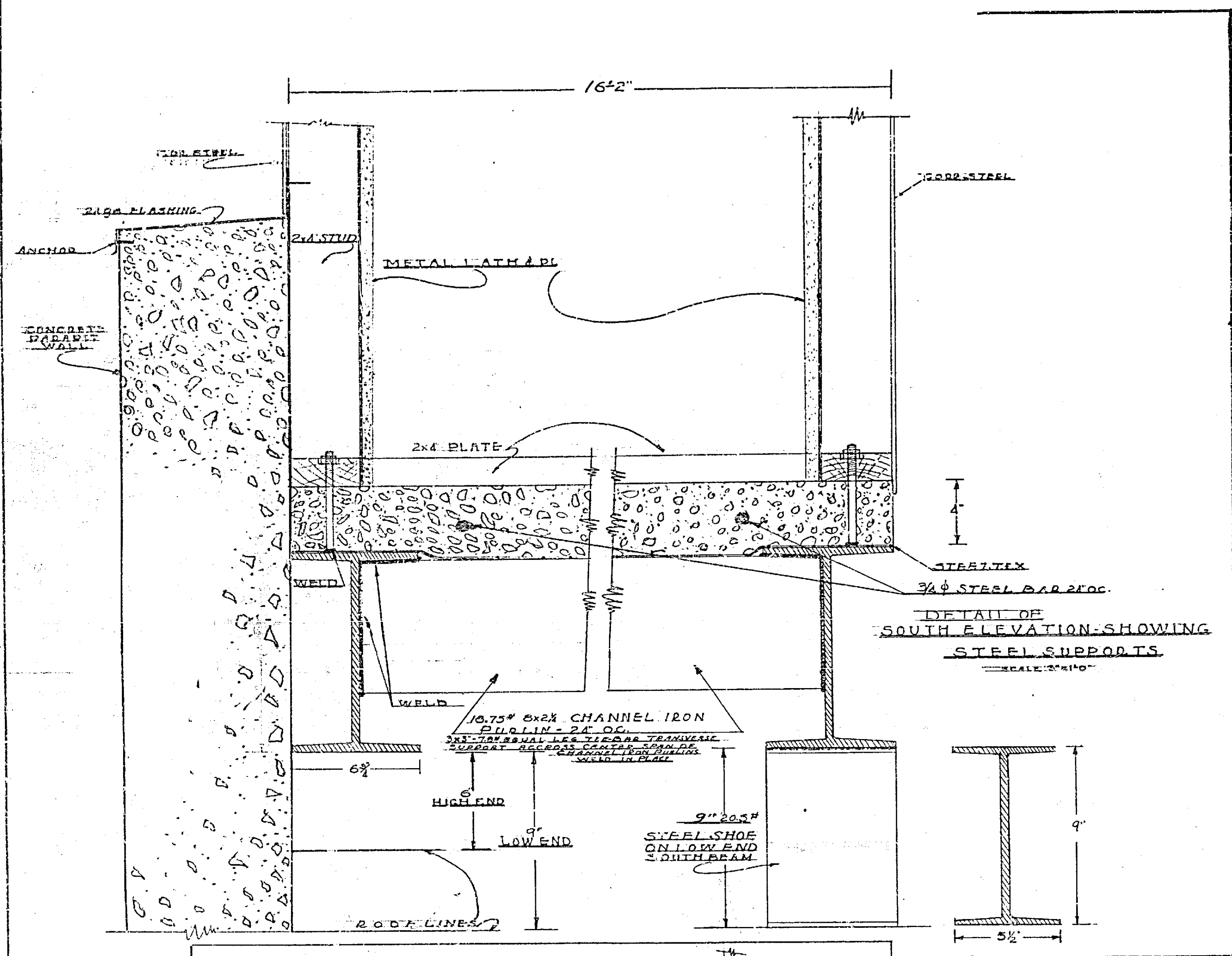
DRAWN BY *the*  
 TRACED BY *the*  
 CRK. & APP'VD. *N.M.O.*

SHEET N  
 OF 10 SHEETS

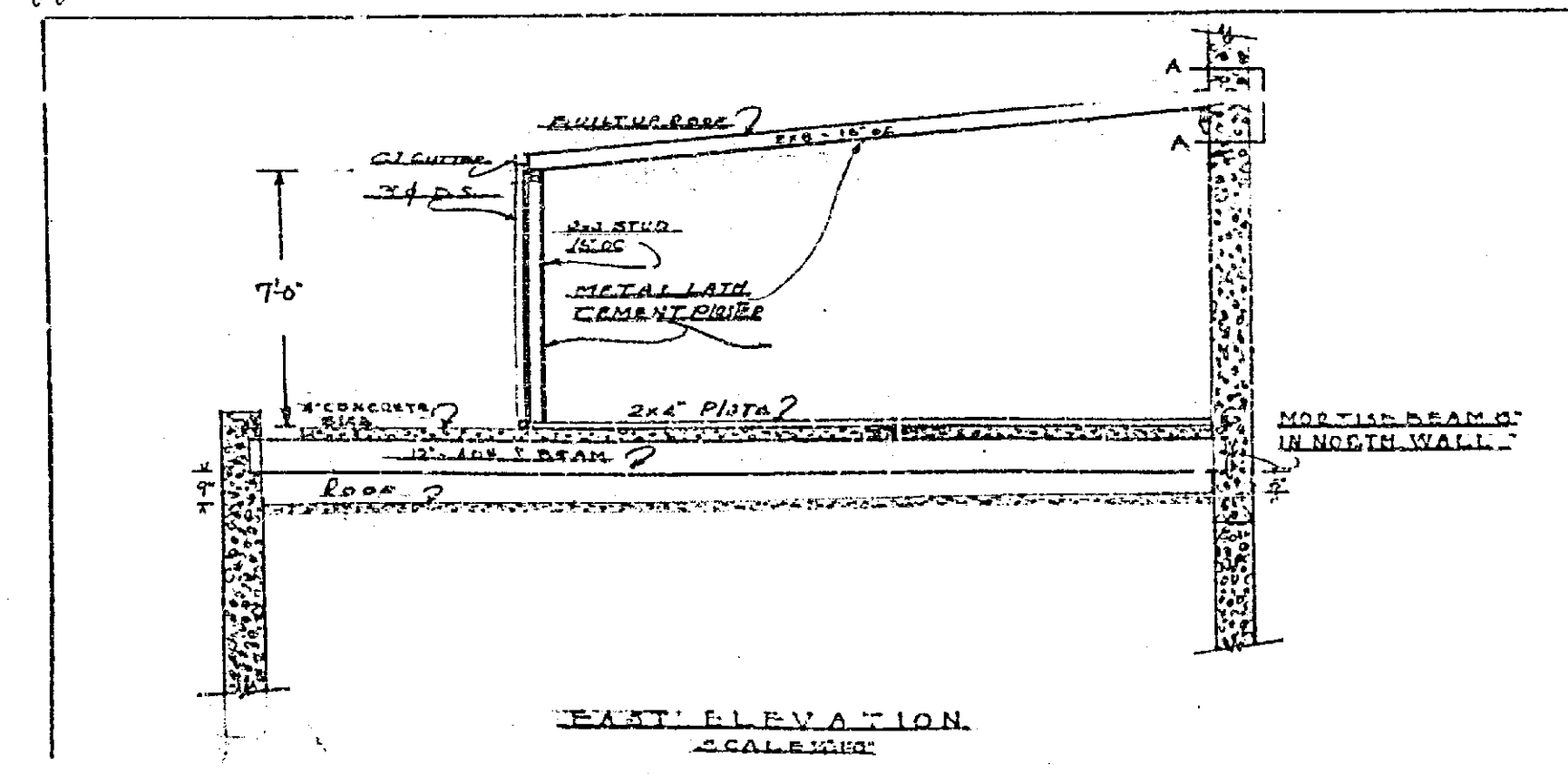


698

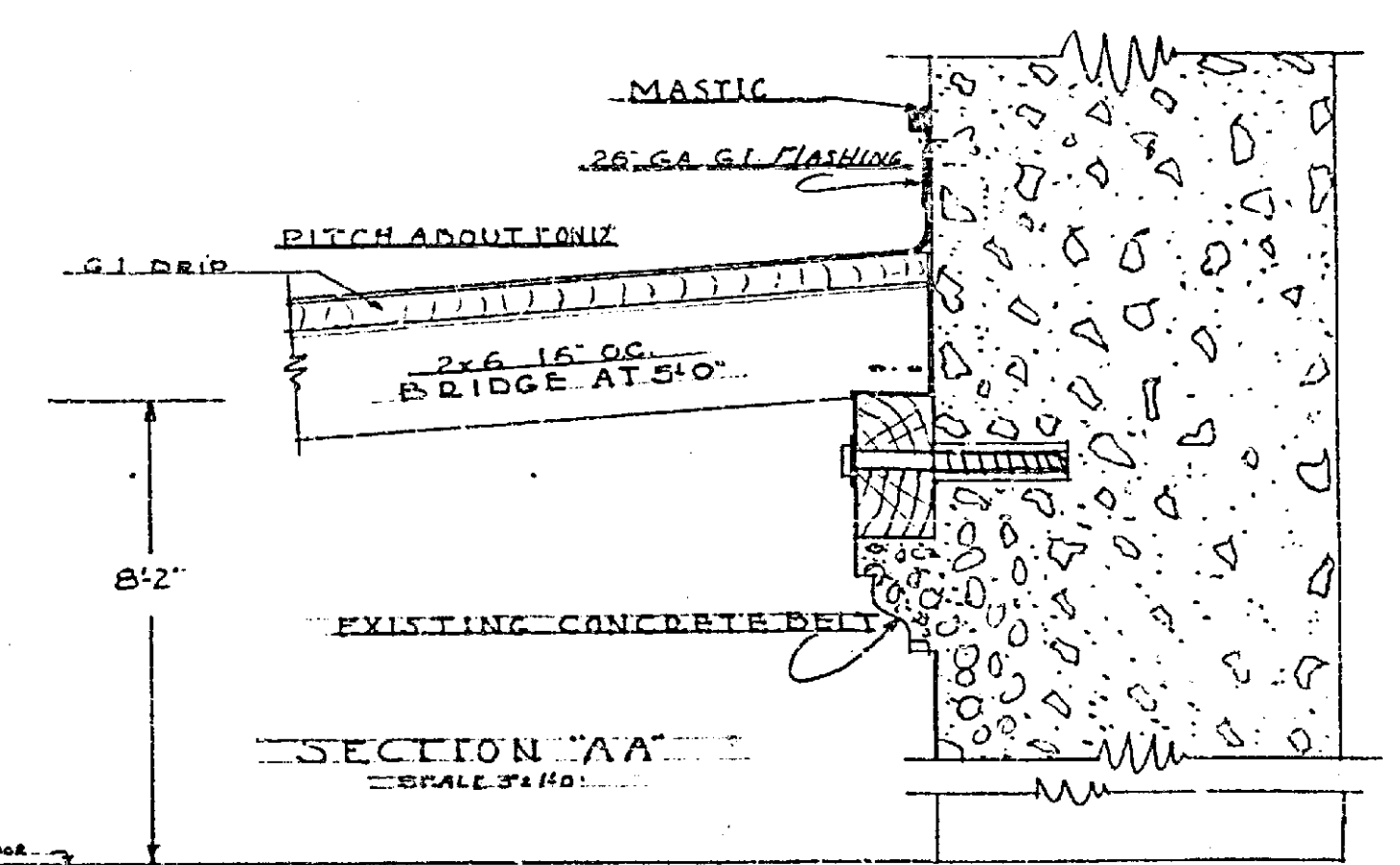
ALTERATIONS TO CITY HALL,  
 RIVERSIDE, CALIF.  
**2ND FLOOR PLAN**  
 AIR CONDITIONING  
 ENGINEERING DEPT. CITY OF RIVERSIDE  
 APPROVED *N.K. Smith*  
 CITY ENGINEER  
 DRAWN BY *[Signature]*  
 TRACED BY *[Signature]*  
 C.K.B. & APPRO. *[Signature]*  
 SHEET NO. **10**  
 OF 12 SHEETS



DETAIL OF SOUTH ELEVATION SHOWING STEEL SUPPORTS  
SCALE: 3/8"=1'-0"



EAST ELEVATION  
SCALE: 3/8"=1'-0"



SECTION 'AA'  
SCALE: 3/8"=1'-0"

698

ALTERATIONS TO CITY HALL RIVERSIDE, CALIF.	
<b>DETAILS</b>	
AIR CONDITIONING	
ENGINEERING DEPT. CITY OF RIVERSIDE	
APPROVED <i>M. H. Jones</i> CITY ENGINEER	
DRAWN BY <i>ESD</i>	SHEET NO. <b>10A</b>
TRACED BY <i>ESD</i>	OF 10 SHEETS
CHKD. & APPROVD. <i>AMZ</i>	<b>88</b>