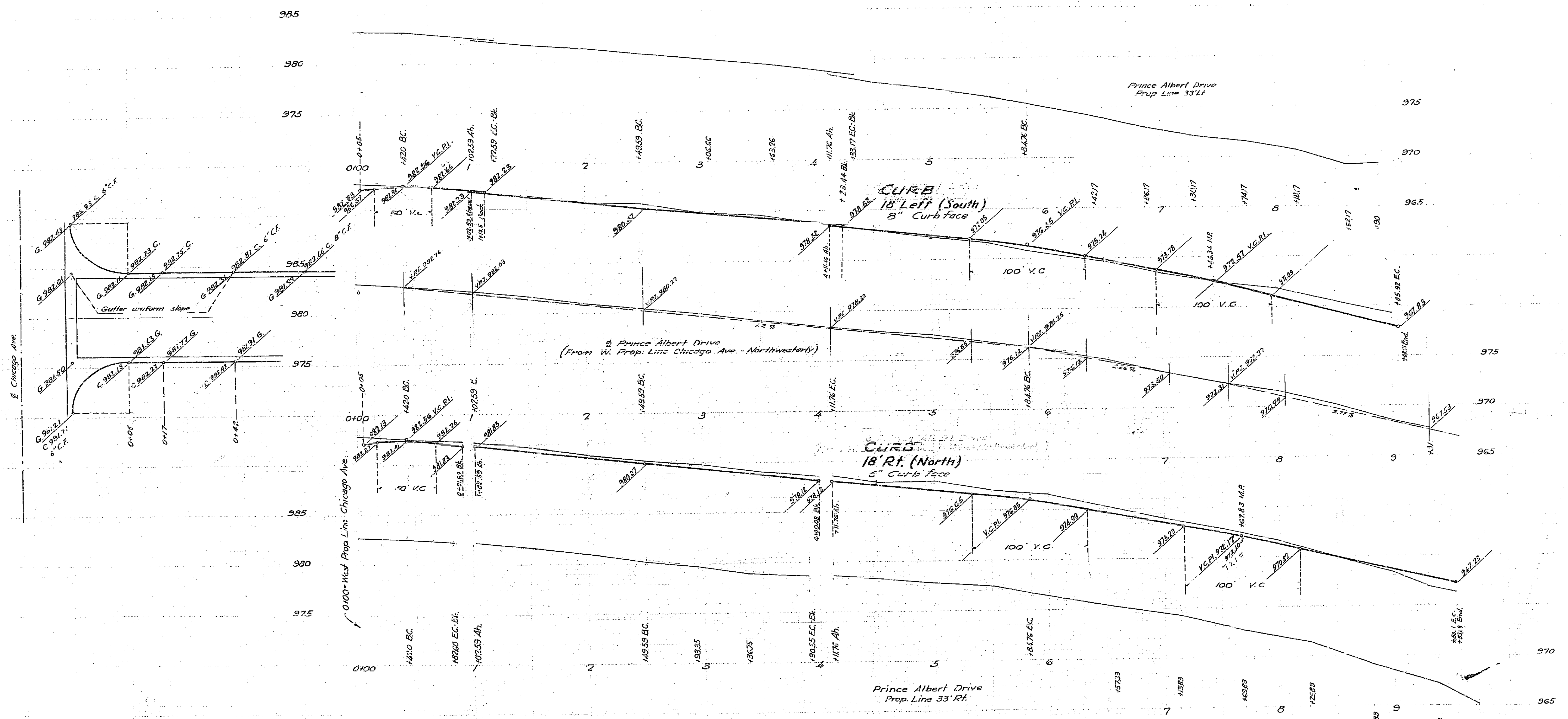


PROPERTY OF
CITY OF RIVERSIDE
CITY ENGINEERING DEPT.

Sheet 1 of 3 sheets

PROPERTY OF
CITY OF RIVERSIDE
CITY ENGINEERING DEPT.

GRADES
SUNSET HEIGHTS SUBDIVISION
June, 1948
Scale: Vert. 1" = 5'
Horiz. 1" = 50'
J.F. DAVIDSON Civil Engr.



Approved Aug. 18-48
M.H. Swaine
City Engineer

PROPERTY OF
CITY OF RIVERSIDE
CITY ENGINEERING DEPT.

PROPERTY OF
CITY OF RIVERSIDE
CITY ENGINEERING DEPT.

F.B. 379

7

GRADES
SUNSET HEIGHTS SUBDIVISION
 June 1948
 Scale Vert. 1" = 5'
 Hor. 1" = 50'
J.F. DAVIDSON, C.E.

PROPERTY OF
 CITY OF RIVERSIDE
 CITY ENGINEERING DEPT.

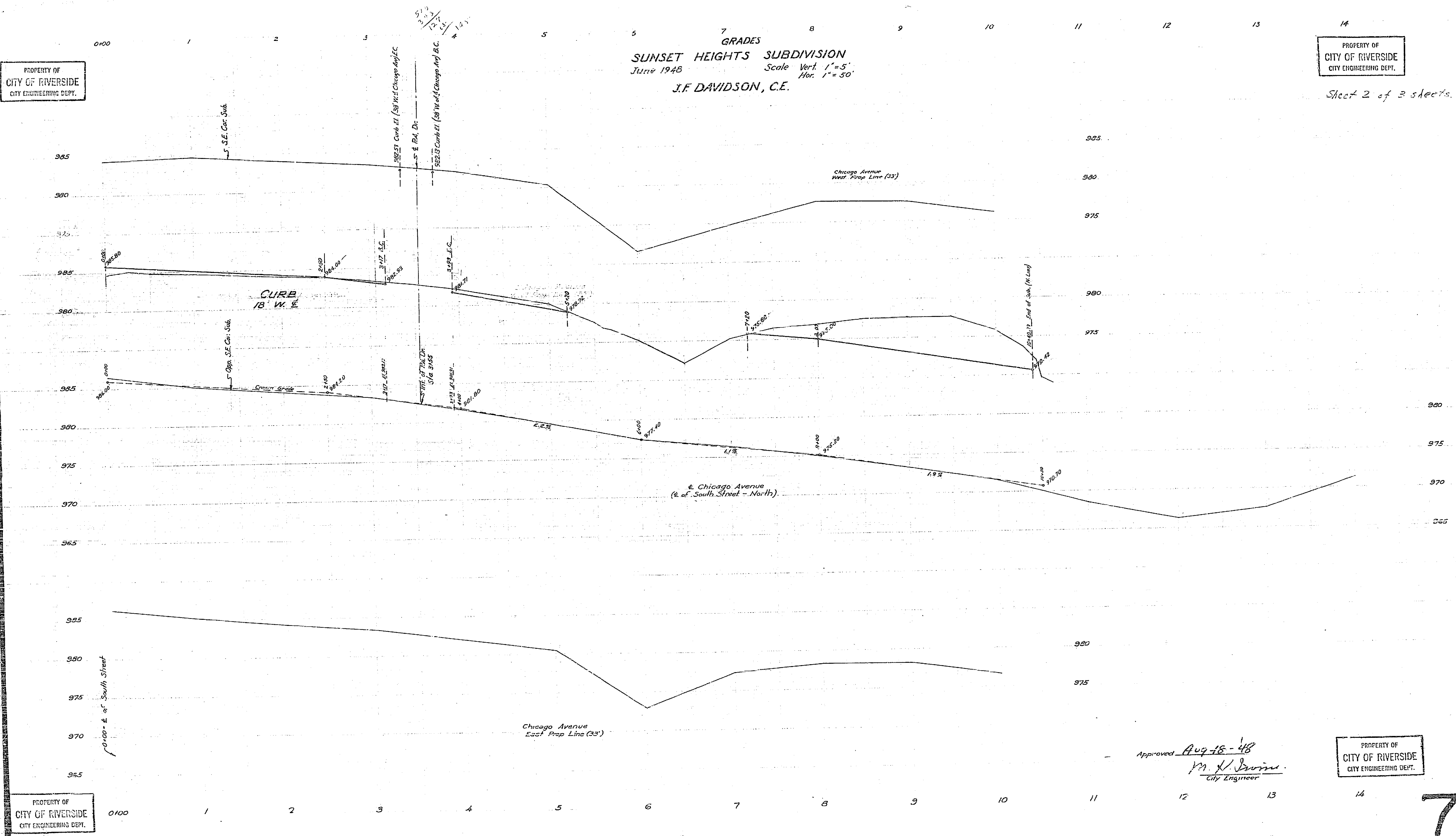
Sheet 2 of 3 sheets.

PROPERTY OF
 CITY OF RIVERSIDE
 CITY ENGINEERING DEPT.

PROPERTY OF
 CITY OF RIVERSIDE
 CITY ENGINEERING DEPT.

Approved Aug 18 - 48
M. H. Davine
 City Engineer

7



MISSING