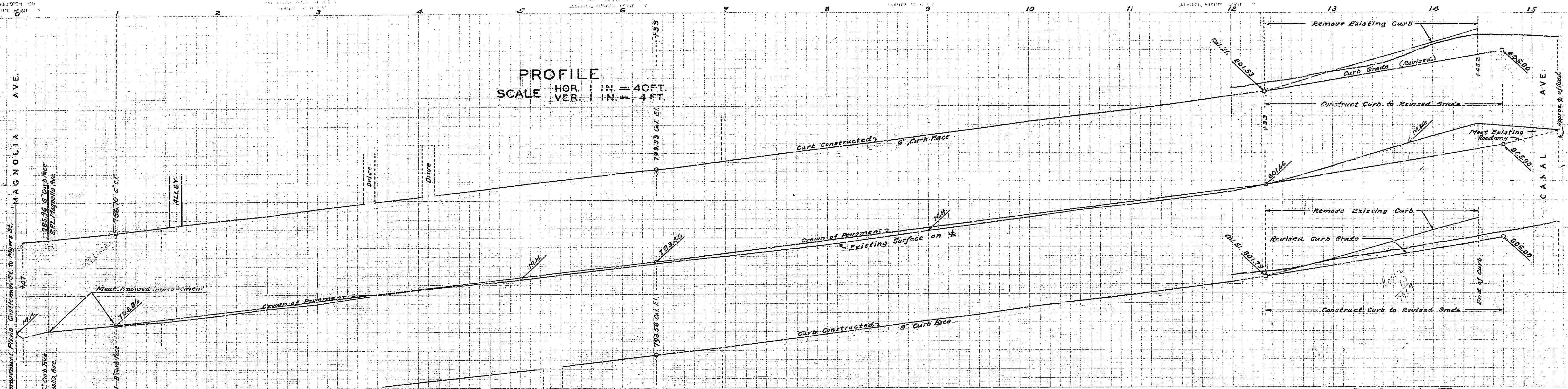


FARNHAM PLACE			
MAGNOLIA AVE. TO CANAL AVE.			
Drawing No.	Sheet No.	Total Sheets	Field Book
70	1	333	333
Plotted	Checked		
WJB, 7-30-36	WJB, 7-31-36		

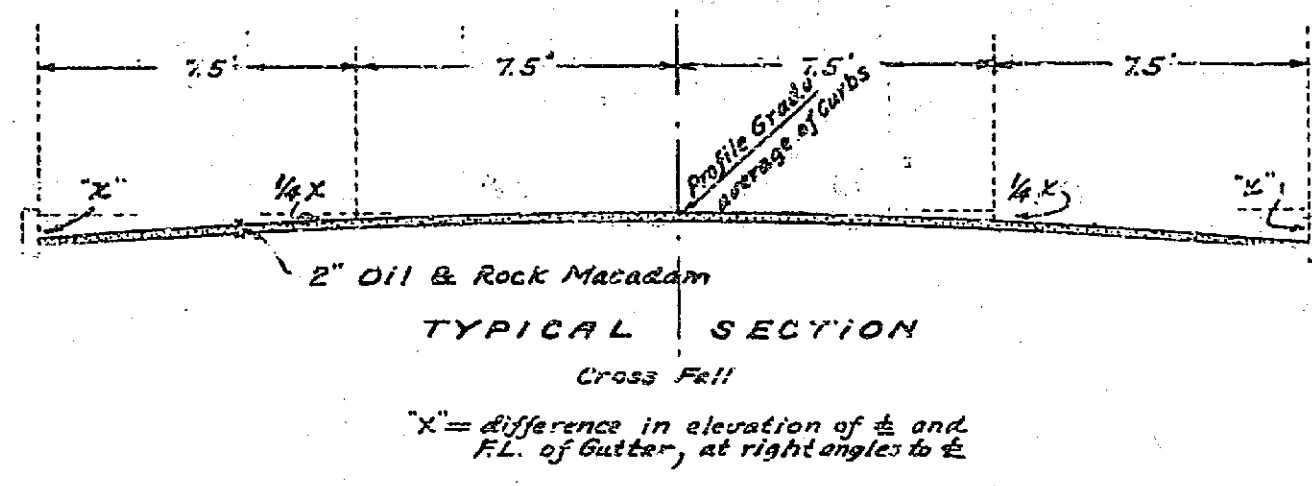
PROFILE
 SCALE HOR. 1 IN. = 40 FT.
 VER. 1 IN. = 4 FT.



PLAN AND PROFILE
 OF THE PROPOSED IMPROVEMENT ON
FARNHAM PLACE
 BETWEEN MAGNOLIA AVE. & CANAL AVE.

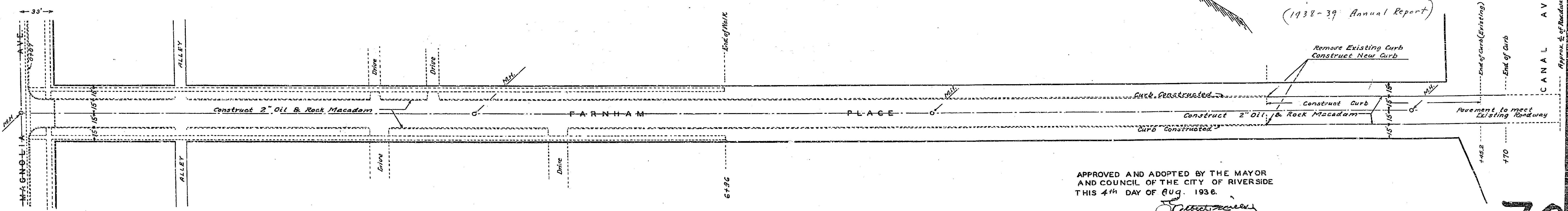
ENGINEER DEPT. RIVERSIDE CALIF. 1936.
 CITY (U.S.G.S.) DATUM PLANE
 FIELD BOOK 333 PAGES 47-58

PLAN
 SCALE: 1 IN. = 40 FT.



SCALE HOR. 1" = 40'
 VER. 1" = 4'

APPROVED: *[Signature]*
 CITY ENGINEER.
 (1938-39 Annual Report)



APPROVED AND ADOPTED BY THE MAYOR
 AND COUNCIL OF THE CITY OF RIVERSIDE
 THIS 4th DAY OF Aug. 1936.

[Signature]
 CITY CLERK, CITY OF RIVERSIDE.