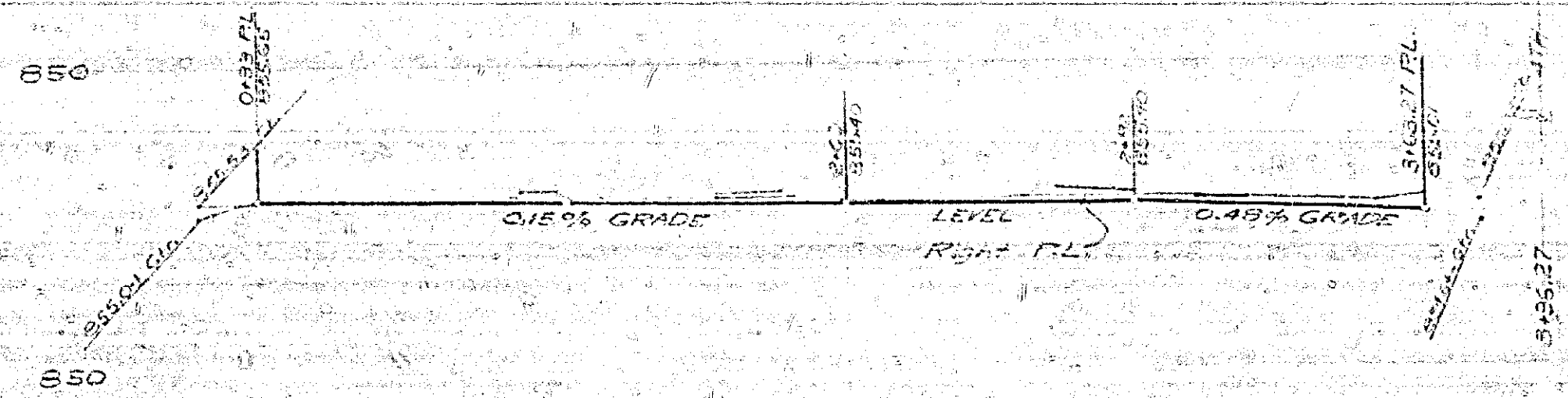
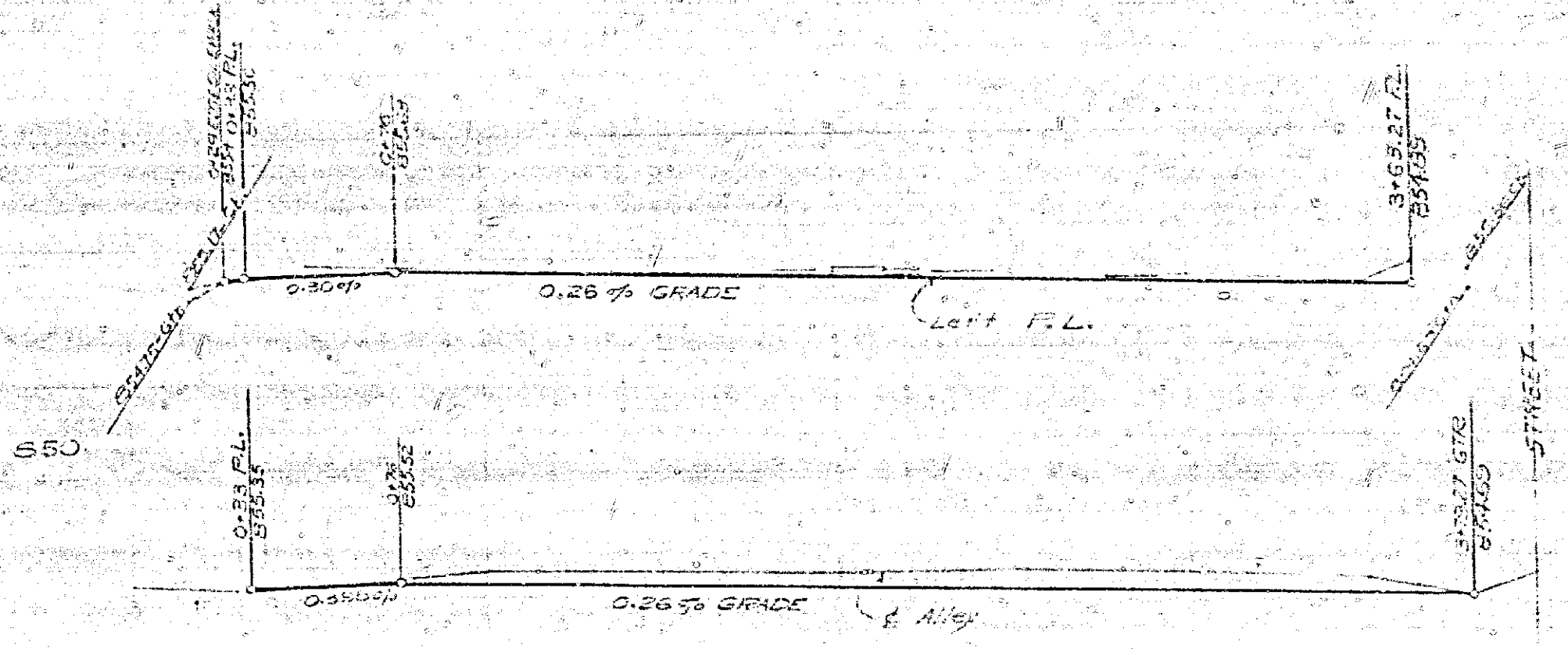
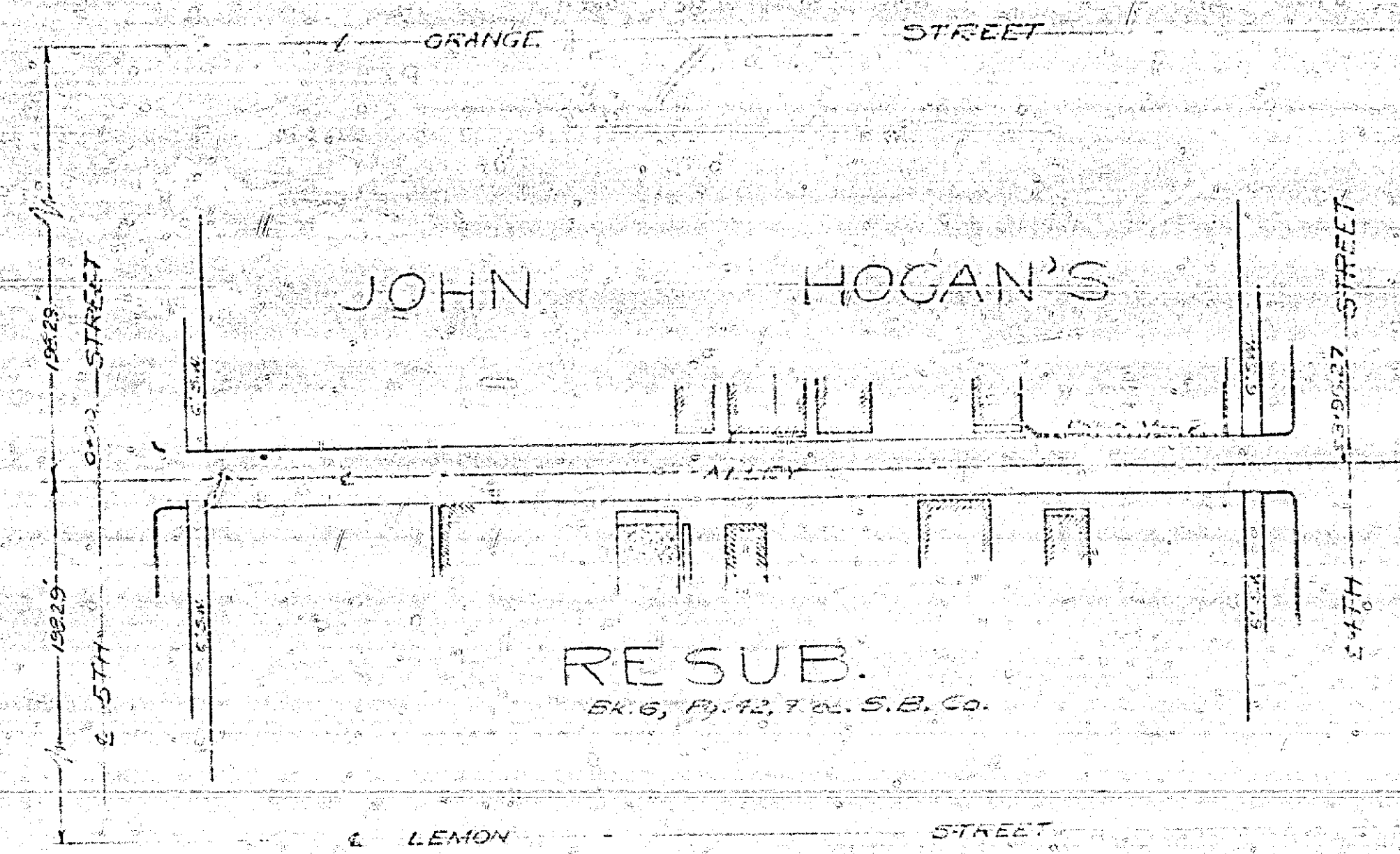


PLAN AND PROFILE
 NO. 701-P
 FOR THE PURPOSE OF ESTABLISHING A GRADE IN THE ALLEY OF
 JOHN HOGAN'S RESUB.
 RIVERSIDE, CALIFORNIA.

APPROVED: *M.H. Irvine*
 M.H. IRVINE, REG. C.E. NO. 3011
 CITY ENGINEER

SCALE: VERT. 1"=4'
 HORIZ. 1"=40'



701-P

22"
 11"
 11"
 11"
 11"
 8.5"
 11"
 17"

34"
 35"
 11"
 11"
 82"
 8.8"
 11"
 11"
 35"