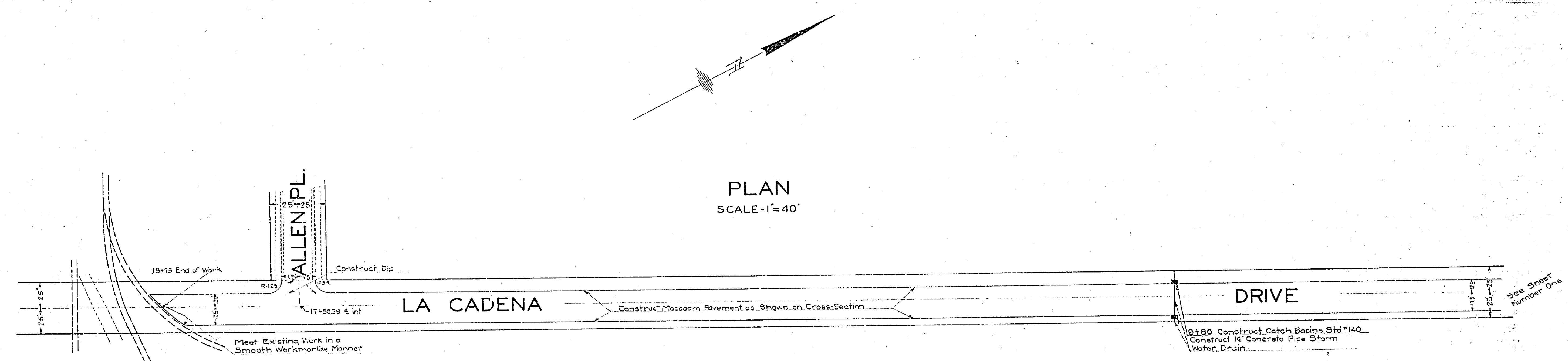
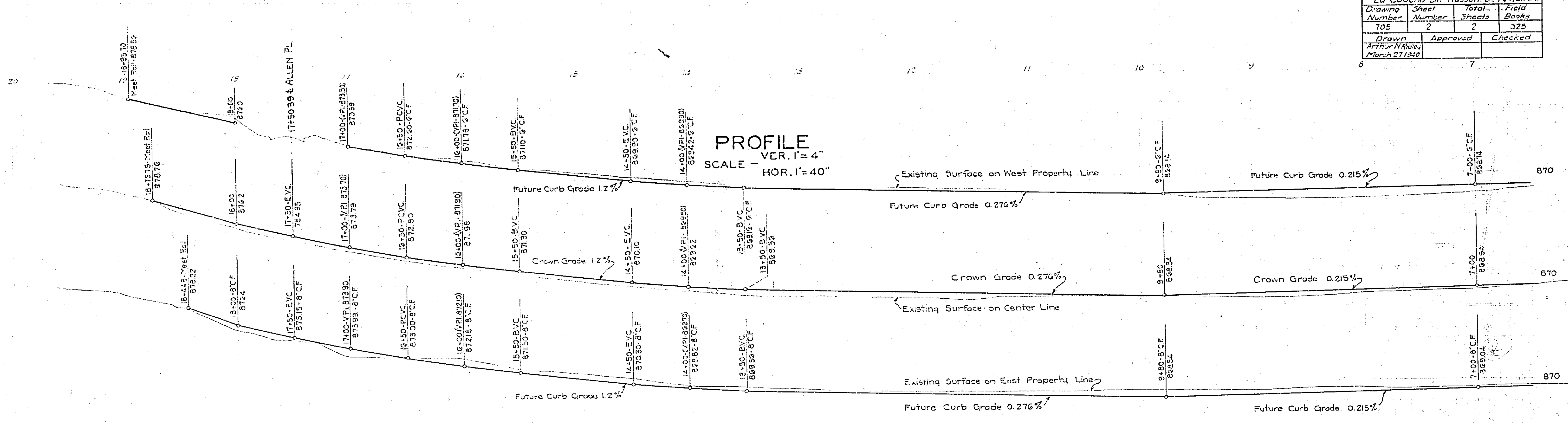
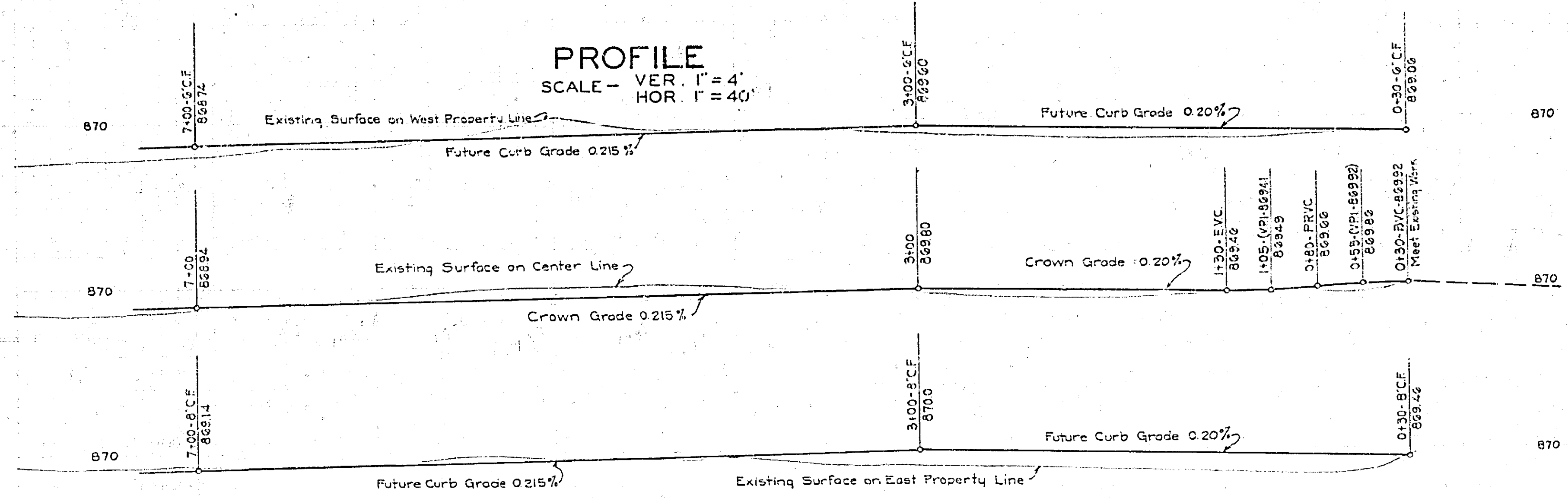


La Cadena Dr.-Russell St. to RR			
Drawing Number	Sheet Number	Total Sheets	Field Books
705	2	2	325
Drawn Arthur N. Kralik March 27 1940		Approved	Checked



705

La Cadena Dr. - Russell St. to P.E. RR.			
Drawing Number	Sheet Number	Total Sheet	Field Book
		2	
Drawn	Approved	Checked	

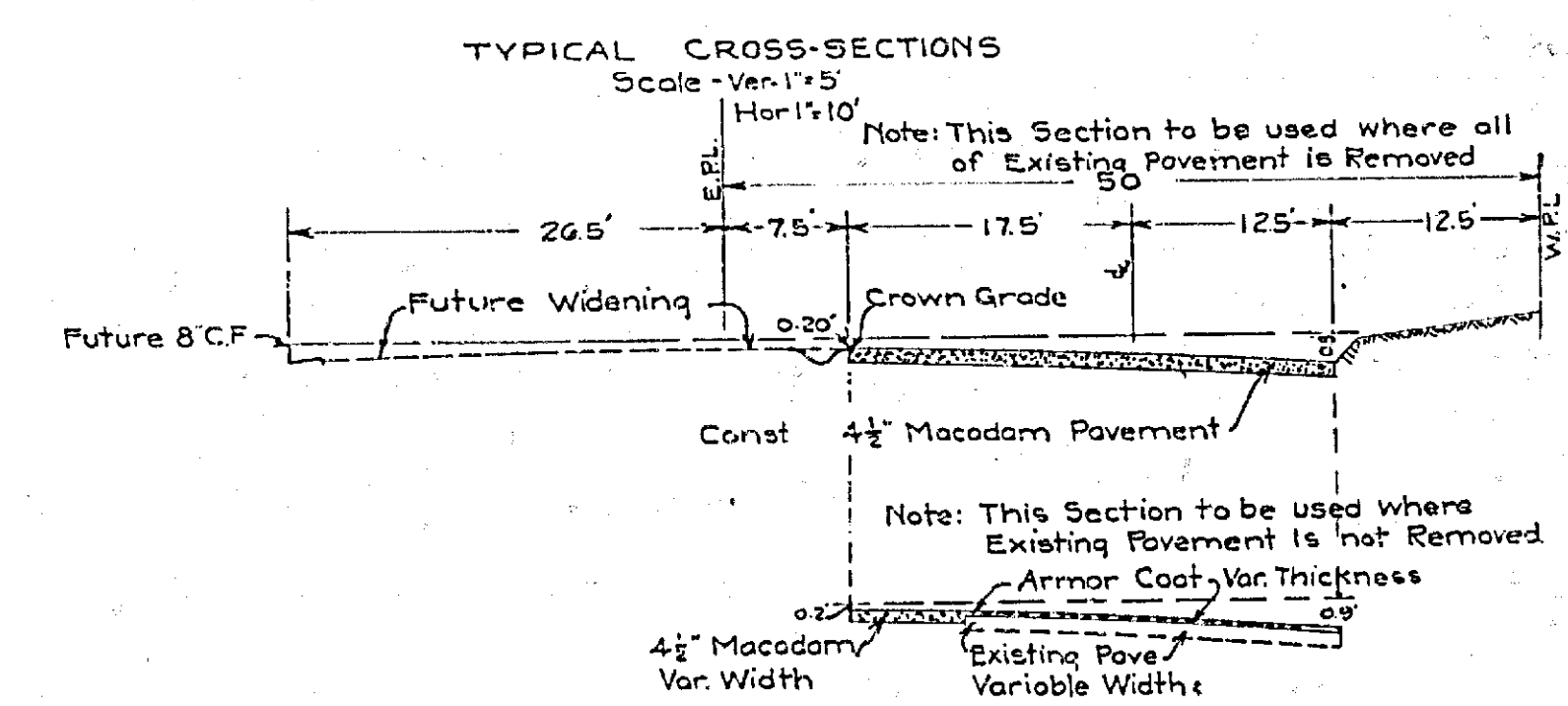
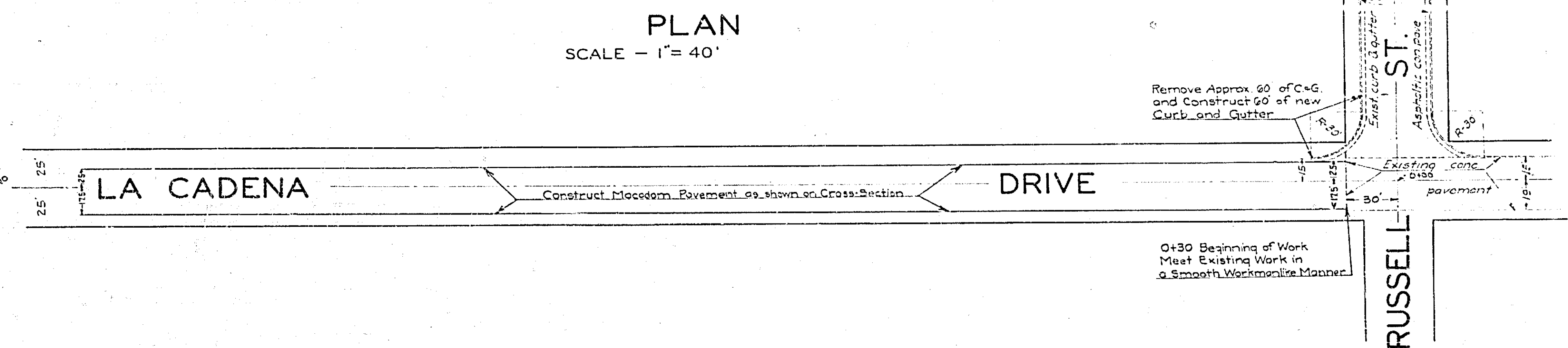
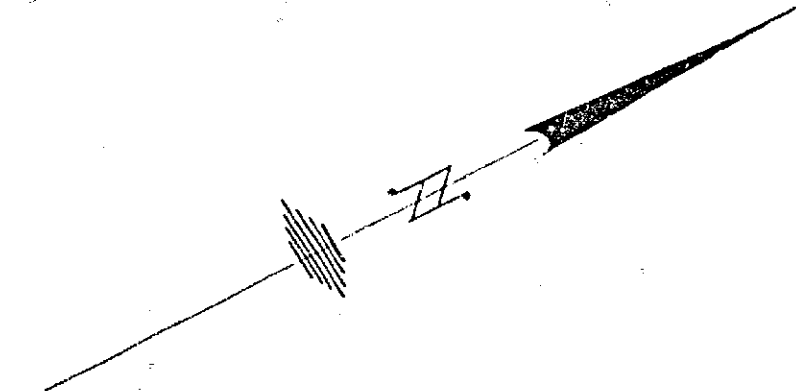


PLAN AND PROFILE
 OF THE PROPOSED IMPROVEMENT OF
LA CADENA DRIVE
 FROM
RUSSELL ST. SOUTHERLY TO P.E. RR.
 BEING A
STREET OF MAJOR IMPORTANCE
 ENGINEERING DEPT. - CITY OF RIVERSIDE
 JAN. 1940

APPROVED *La M. ...*
 CITY ENGINEER-RE. 1312

APPROVED AND ADOPTED BY THE MAYOR
 AND COUNCIL OF THE CITY OF RIVERSIDE
 THIS DAY OF 1940

CITY CLERK



705