

PLANS AND PROFILES
NO 711
OF
SIERRA STREET SANITARY SEWER DISTRICT
RIVERSIDE CALIFORNIA

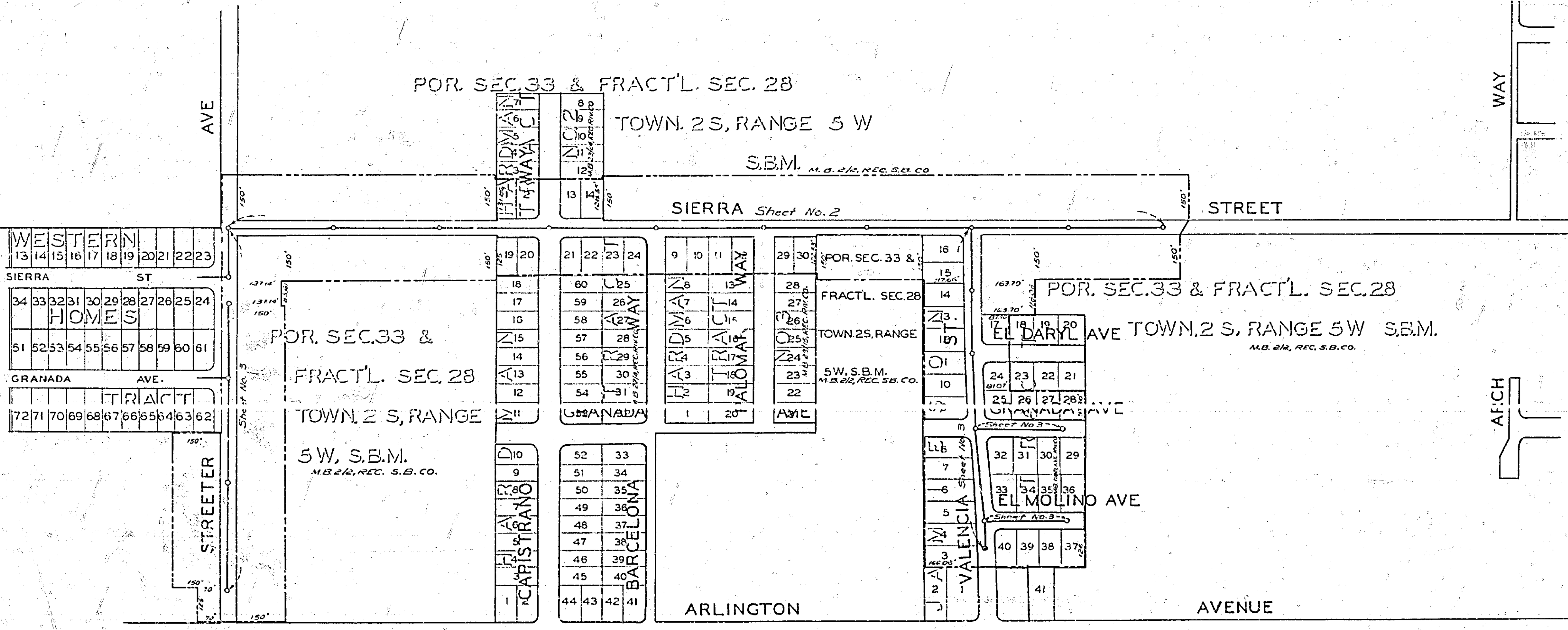
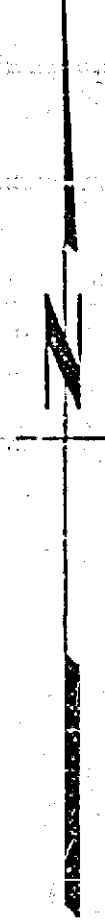
SCALE: 1" = 200'

APPROVED *M. H. Irvine*
M. H. IRVINE REC. OF NO. 3011
CITY ENGINEER

THESE PLANS APPROVED AND ADOPTED
BY THE MAYOR AND COUNCIL OF THE CITY
OF RIVERSIDE STATE OF CALIFORNIA ON
THIS _____ DAY OF _____ 1950

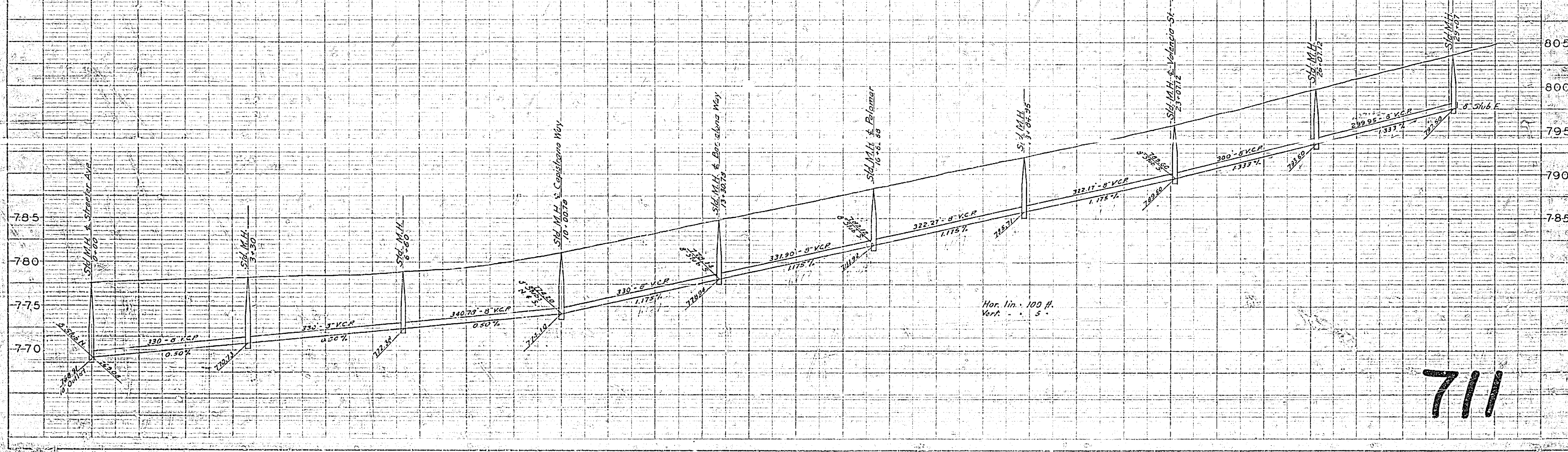
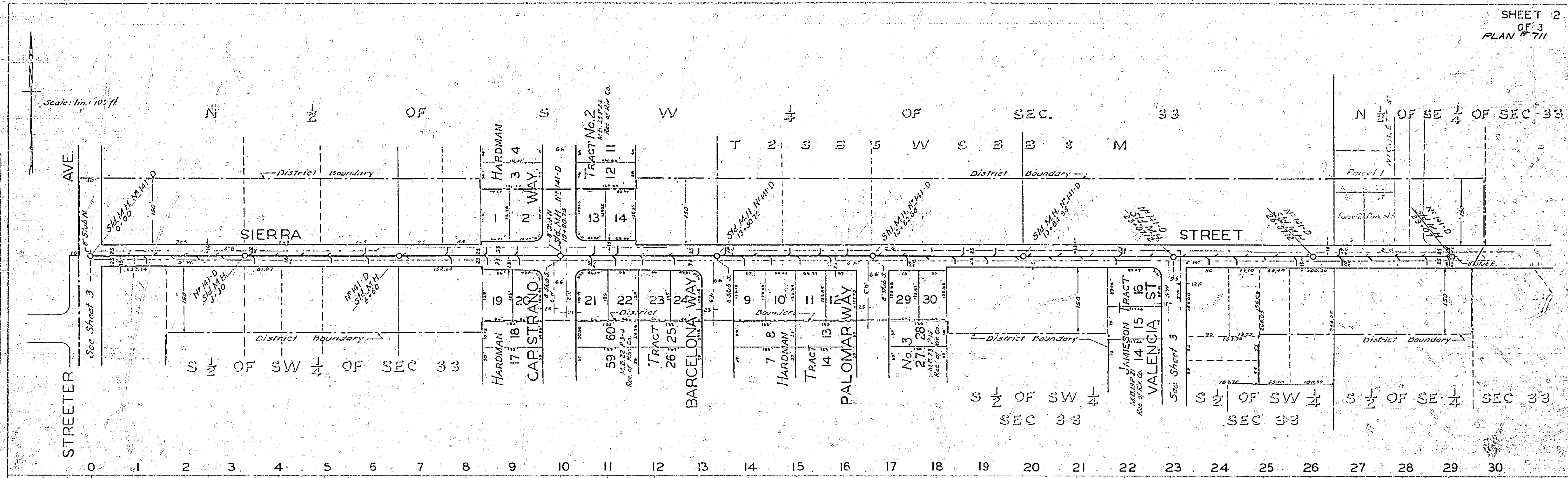
FIELD BOOK 483 PAGE 23

CITY CLERK

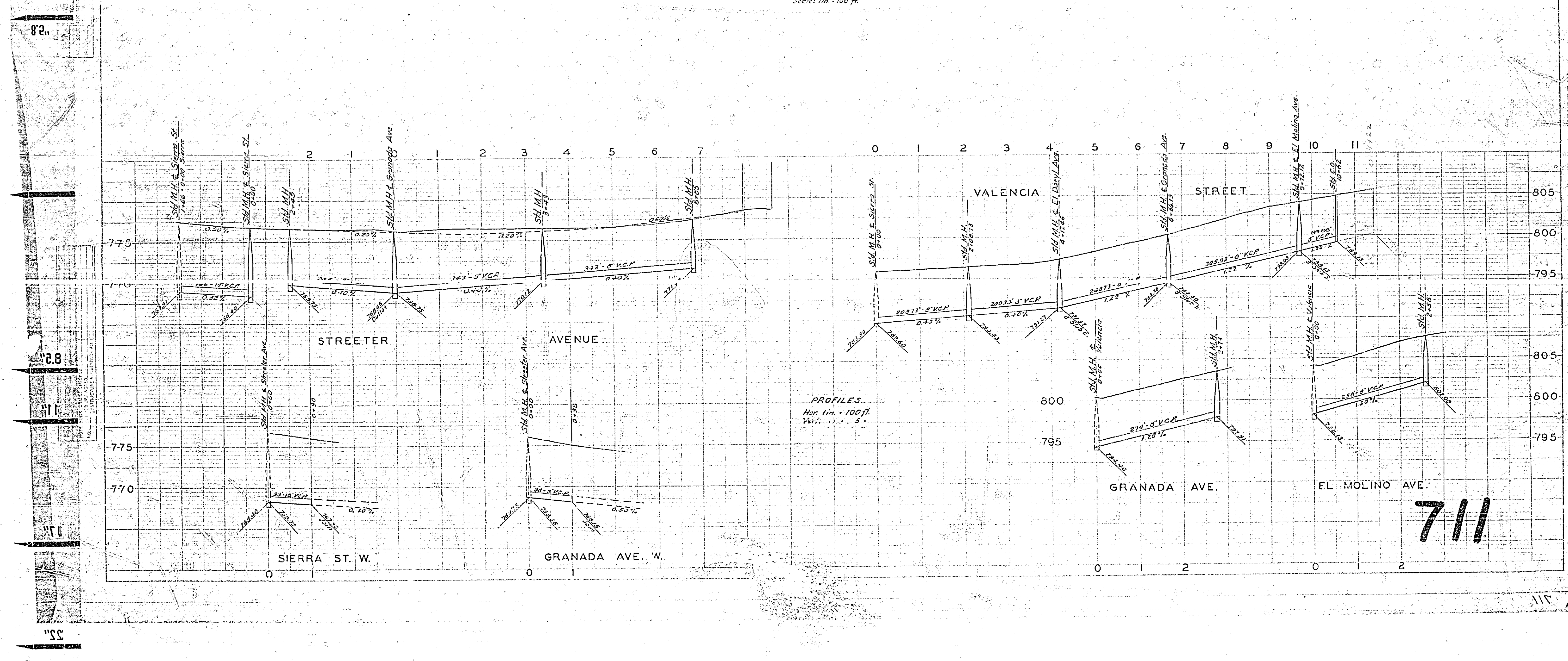
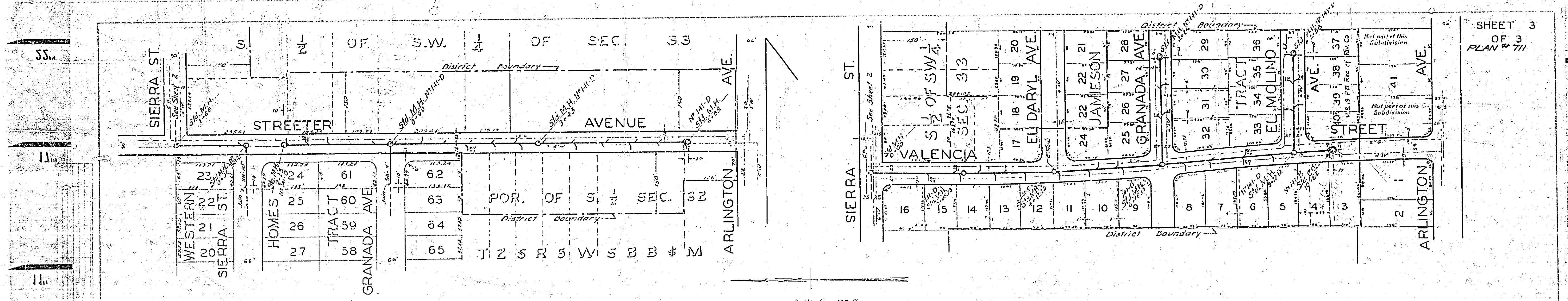


711

Scale: 1 in. = 100 ft.



711



711