

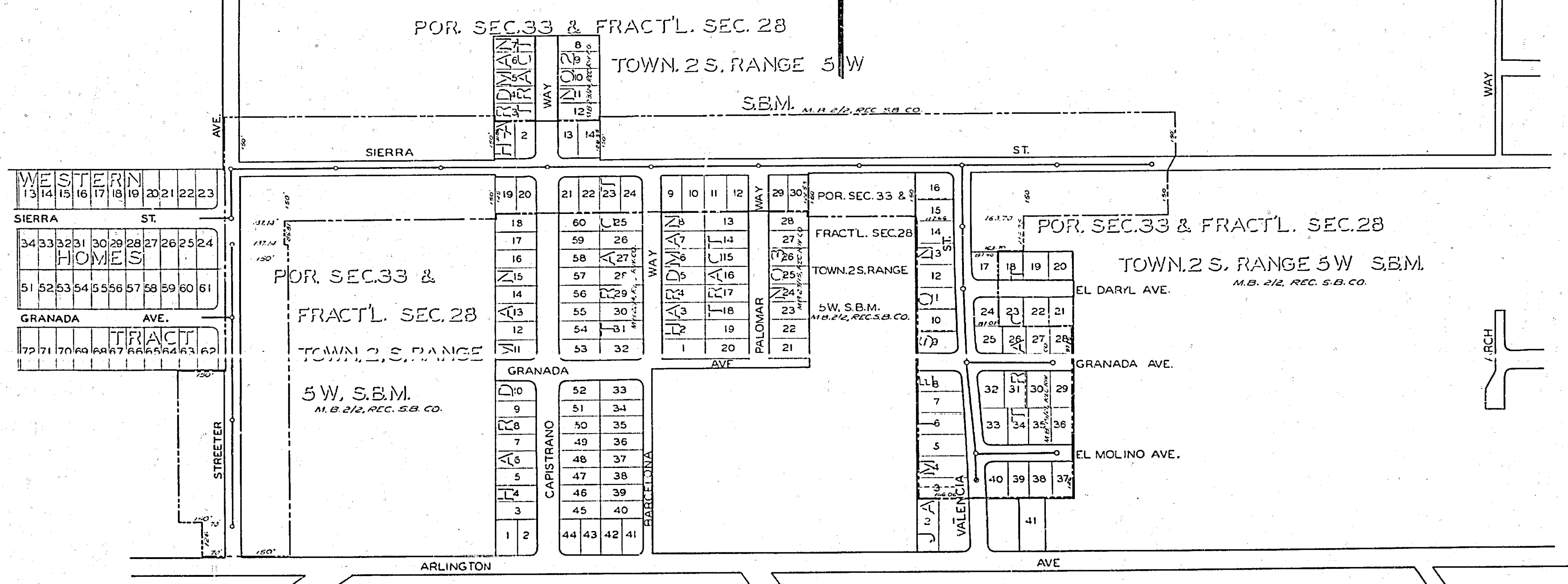
MAP NO. 711-A
 SHOWING THE LANDS INCLUDED WITHIN
 THE ASSESSMENT DISTRICT TO BE BENEFITED
 BY THE CONSTRUCTION OF SANITARY SEWERS
 IN THE MATTER OF THE
**SIERRA STREET
 SANITARY SEWER DISTRICT**
 DISTRICT BOUNDARY SHOWN THUS -----

FIELD BOOK 483 PAGE 23

APPROVED M.H. IRVINE, REG. C.E. NO. 3011
 CITY ENGINEER

THESE PLANS APPROVED AND ADOPTED
 BY THE MAYOR AND COUNCIL OF THE CITY
 OF RIVERSIDE, STATE OF CALIFORNIA, ON
 THIS ____ DAY OF ____ 1950
 CITY CLERK

SCALE: 1" = 200'



711-A