

DIAGRAM

(PREPARED ON MAKING REASSESSMENT)
EXHIBITING SIERRA STREET SANITARY SEWER DISTRICT

IN THE CITY OF RIVERSIDE ON WHICH WORK HAS BEEN DONE UNDER MY OFFICIAL CONTRACT AS SUPERINTENDENT OF STREETS OF SAID CITY A 18" PIPELINE CONSTRUCTION COMPANY OF RIVERSIDE, CALIFORNIA INC. DATED JUNE 13, 1951

FOR THE CONSTRUCTION OF SANITARY SEWER, MANHOLES, CLEANOUT, WYE BRANCHES, & HOUSE CONNECTIONS AND APPURTENANT WORK

AS IS MORE PARTICULARLY DESCRIBED IN SAID CONTRACT TO WHICH REFERENCE IS HEREBY MADE FOR FURTHER PARTICULARS; SAID DIAGRAM ALSO SHOWS THE RELATIVE LOCATION OF EACH LOT PORTION OF LOT, PIECE OR PARCEL OF LAND ASSSESSED FOR THE WORK DONE NUMBERED IN CIRCLES TO CORRESPOND TO THE

AND INK NUMBERS IN THE REASSESSMENT

HEREIN FIGURES NEXT TO PROPERTY LINES SHOW LENGTH OF SPANS IN FEET

THE MARK () MEANS FEET PROPERTY LINES THAT DEFEH FROM THE RECORD

SUBDIVISIONS ARE SHOWN BY SPOKEN LINES. THE DISTRICT BOUNDARIES

BOUNDARIES BY A HEAVY DASHED LINE

PROPERTY COVERED BY THE REASSESSMENT IS SHOWN ON THE 2-1-51

RECORDED MAPS

JAMIESON TRACT M.B. 19/21 REC. RIV. CO.

SEC. 33 AND FRACT. L. SEC. 28 TOWN. 2 S, RANGE 5W, SBM MB 2/2 REC. SB CO.

HARDMAN TRACT M.B. 22/4 REC. RIV. CO.

HARDMAN TRACT NO. 2 M.B. 23/24 REC. RIV. CO.

HARDMAN TRACT NO. 3 M.B. 23/15 REC. RIV. CO.






SECTION 32 T. 2 S, R. 5 W, S. B. B. M.

PRESENTED TO THE BOARD OF SUPERVISORS FOR THE REASSESSMENT

ON MAY 15, 1951 AND FIXED THE DAY OF 1952 AS THE TIME FOR HEARING THE REASSESSMENT AND CONSIDERING ANY OBJECTIONS THERETO.

CITY CLERK OF THE CITY OF RIVERSIDE

HEREIN THE LEGEND OF THE SYMBOLS EMPLOYED FOR THIS DIAGRAM IS EXPLAINED AS FOLLOWS:

- VITRIFIED CLAY PIPE SEWER 
- STD. MANHOLE 
- STD. CLEANOUT 
- VITRIFIED CLAY WYE BRANCH 
- 4" VITRIFIED CLAY PIPE HOUSE CONNECTION 

THIS DIAGRAM, CONSISTING OF FIVE SHEETS, INDICATES BY A HEAVY DASHED EXTERIOR BOUNDARY LINE THE DISTRICT DEEMED BY ME TO BE BENEFITED BY THE CONSTRUCTION OF SANITARY SEWERS AND APPURTENANT WORK IN SIERRA STREET SANITARY SEWER DISTRICT, AS CONTEMPLATED BY RESOLUTION OF INTENTION NO. 5027, ADOPTED BY THE COUNCIL OF THE CITY OF RIVERSIDE ON THE 13 TH DAY OF MARCH 1951.

CITY OF RIVERSIDE, THIS DAY OF 1952

SUPERINTENDENT OF STREETS OF THE CITY OF RIVERSIDE.

711-B

RECORDED AT 5:00 PM 1952

SUPERINTENDENT OF STREETS OF THE CITY OF RIVERSIDE.

COMPANY OF RIVERSIDE, CALIFORNIA INC. UNDER PIPELINE CONSTRUCTION
JUNE 13, 1951 5087

- 4" VITRIFIED CLAY HOUSE CONNECTIONS 1476 LIN. FT.
- 8" VITRIFIED CLAY PIPE SEWER 5594.8 LIN. FT.
- 10" VITRIFIED CLAY PIPE SEWER 264.4 LIN. FT.
- 8x4" VITRIFIED CLAY WYE BRANCHES 141 EACH
- 10x4" VITRIFIED CLAY WYE BRANCHES 1 EACH
- STD. MANHOLES 21 EACH
- STD. CLEANOUT 1 EACH

IN WITNESS WHEREOF, I HAVE HEREBY SET MY HAND AND SEAL OF OFFICE

Scale - 1" = 100'

See Sheet No 150

POR.

SEC 33 & FRACT'L. SEC. 28

PORTION OF NW.4 OF S.E.4 SEC. 33

DISTRICT BOUNDARY

166' 589° 27' W

150'

166'

150'

166'

150'

166'

150'

166'

150'

166'

150'

166'

150'

166'

150'

166'

150'

166'

150'

166'

150'

166'

150'

166'

150'

166'

150'

166'

150'

166'

150'

166'

150'

166'

150'

166'

150'

166'

150'

166'

150'

166'

150'

166'

150'

166'

150'

166'

150'

166'

150'

166'

150'

166'

150'

166'

150'

166'

150'

166'

150'

166'

150'

166'

150'

166'

150'

166'

150'

166'

150'

166'

150'

166'

150'

166'

150'

166'

150'

166'

150'

166'

150'

166'

150'

166'

150'

166'

150'

166'

150'

166'

150'

166'

150'

166'

150'

166'

150'

166'

150'

166'

150'

166'

150'

166'

150'

166'

150'

166'

150'

166'

150'

166'

150'

166'

150'

166'

150'

166'

150'

166'

150'

166'

150'

166'

150'

166'

150'

166'

150'

166'

150'

166'

150'

166'

166'

150'

166'

150'

166'

150'

166'

150'

166'

150'

166'

150'

166'

150'

166'

150'

166'

150'

166'

150'

166'

150'

166'

150'

166'

150'

166'

150'

166'

150'

166'

150'

166'

150'

166'

150'

166'

150'

166'

150'

166'

150'

166'

150'

166'

150'

166'

150'

166'

150'

166'

150'

166'

150'

166'

150'

166'

150'

166'

150'

166'

150'

166'

150'

166'

150'

166'

150'

166'

166'

150'

166'

150'

166'

150'

166'

150'

166'

150'

166'

150'

166'

150'

166'

150'

166'

150'

166'

150'

166'

150'

166'

150'

166'

150'

166'

150'

166'

150'

166'

150'

166'

150'

166'

150'

166'

150'

166'

150'

166'

150'

166'

150'

166'

150'

166'

150'

166'

150'

166'

150'

166'

150'

166'

150'

166'

150'

166'

150'

166'

150'

166'

150'

166'

150'

166'

150'

166'

166'

150'

166'

150'

166'

150'

166'

150'

166'

150'

166'

150'

166'

150'

166'

150'

166'

150'

166'

150'

166'

150'

166'

150'

166'

150'

166'

150'

166'

150'

166'

150'

166'

150'

166'

150'

166'

150'

166'

150'

166'

150'

166'

150'

166'

150'

166'

150'

166'

150'

166'

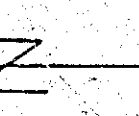
8'2"

8'2"

11'

SHEET 3 OF 5

Scale - 1" = 100'



POR.

SEC. 33 & FRACT'L. SEC. 23 TOWN 2 S. RANGE 5 W

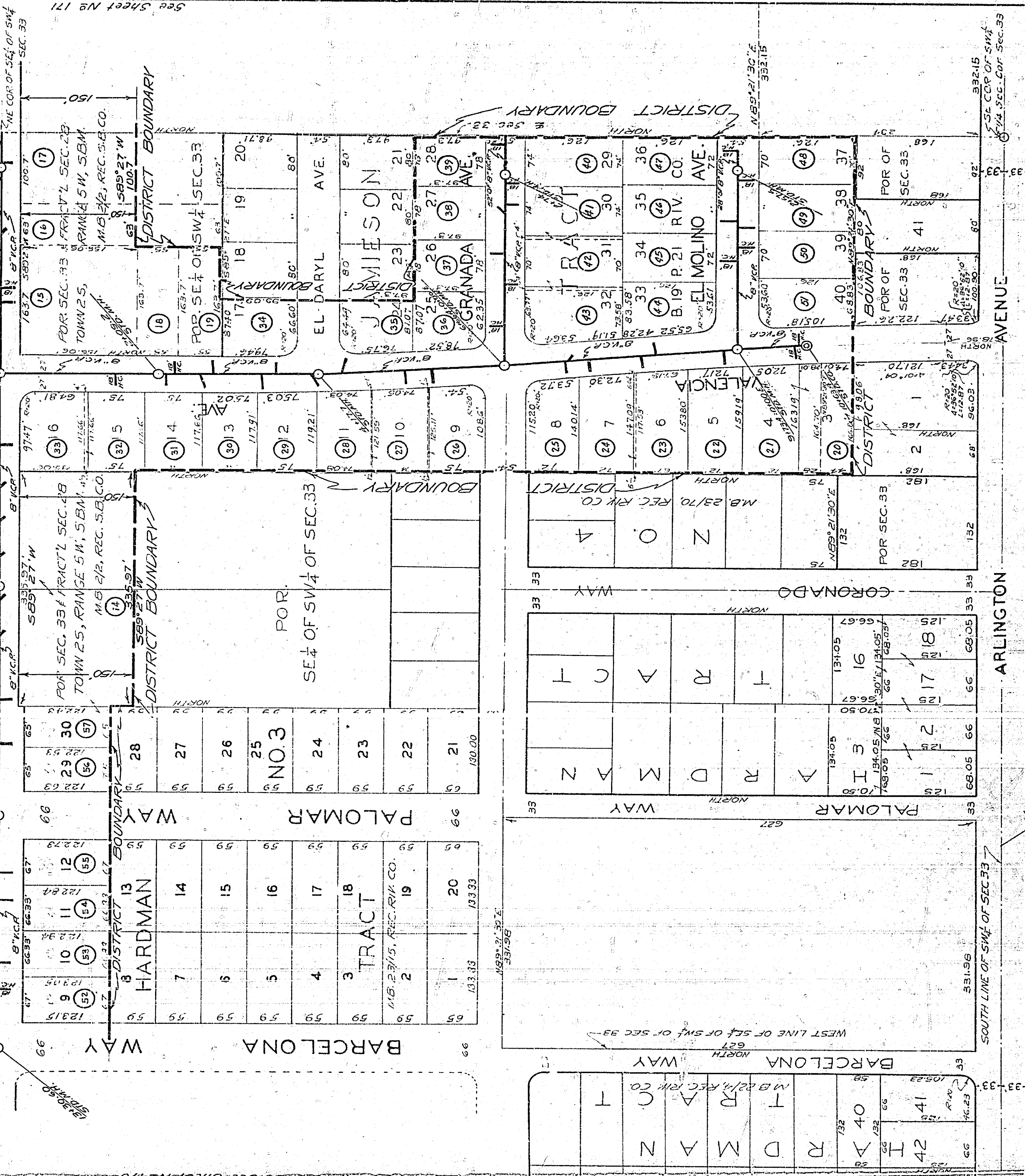
See Sheet No 151

S.B.M.
M.B. 2/2, REC. S.B. CO.
OF SW 4 ~ SEC. 33

POR. OF NE 4
OF SW 4 OF SEC. 33

SIERRA

STREET



ARLINGTON

CORONADO

PALOMAR

PALOMAR

WAY

WAY

WAY

WAY

SIERRA

ST

ST

ST

ST

ST

ST

ST

ST

ST

ST

ST

ST

ST

ST

ST

ST

ST

ST

ST

ST

ST

ST

ST

ST

ST

ST

ST

ST

ST

ST

ST

ST

ST

ST

ST

ST

ST

ST

ST

ST

ST

ST

ST

ST

ST

ST

ST

ST

ST

ST

ST

ST

ST

ST

ST

ST

ST

ST

ST

ST

ST

ST

ST

ST

ST

ST

ST

ST

ST

ST

ST

ST

ST

ST

ST

ST

ST

ST

ST

ST

ST

ST

ST

ST

ST

ST

ST

ST

ST

ST

ST

ST

ST

ST

ST

ST

ST

ST

ST

ST

ST

ST

ST

ST

ST

ST

ST

ST

ST

ST

ST

ST

ST

ST

ST

ST

ST

ST

ST

ST

ST

ST

ST

ST

ST

ST

ST

ST

ST

ST

ST

ST

ST

ST

ST

ST

ST

ST

ST

ST

ST

ST

ST

ST

ST

ST

ST

ST

ST

ST

ST

ST

ST

ST

ST

ST

ST

ST

ST

ST

ST

ST

ST

ST

ST

ST

ST

ST

ST

ST

ST

ST

ST

ST

ST

ST

ST

ST

ST

ST

ST

ST

ST

ST

ST

ST

ST

ST

ST

ST

ST

ST

ST

ST

ST

ST

ST

ST

ST

ST

ST

ST

ST

ST

ST

ST

ST

ST

ST

ST

ST

ST

ST

ST

ST

ST

ST

ST

ST

ST

ST

ST

ST

ST

ST

ST

ST

ST

ST

ST

ST

ST

ST

ST

ST

ST

ST

ST

ST

ST

ST

ST

ST

ST

ST

ST

ST

ST

ST

ST

ST

ST

ST

ST

ST

ST

ST

ST

ST

ST

ST

ST

ST

ST

ST

ST

ST

ST

ST

ST

ST

ST

ST

ST

ST

ST

ST

ST

ST

ST

ST

ST

ST

ST

ST

ST

ST

ST

ST

ST

ST

ST

ST

ST

ST

ST

ST

ST

ST

ST

ST

ST

ST

ST

ST

ST

ST

ST

ST

ST

ST

ST

ST

ST

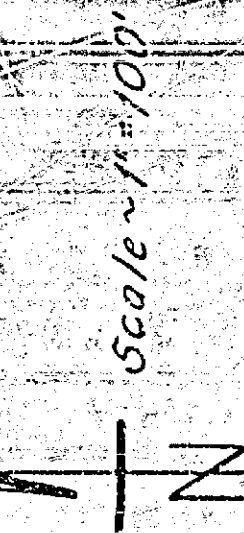
ST

ST

ST

ST

SHEET 4 OF 5



POR.

See Sheet No 152

SEC. 33 & FRACT'L SEC. 28

TOWN. 2 S, RANGE 5W

S. B. M.
M.B. 2/2, REC. S. B. CO.
PORTION OF NW 4 OF SW 4
SEC. 33

DISTRICT BOUNDARY

DISTRICT BOUNDARY

DISTRICT BOUNDARY

DISTRICT BOUNDARY

DISTRICT BOUNDARY

AVE

SIERRA

SIERRA

SIERRA

SIERRA

STREET

STREET

STREET

STREET

STREET

STREET

STREET

STREET

STREET

STREET

STREET

STREET

STREET

STREET

STREET

STREET

STREET

STREET

STREET

STREET

STREET

STREET

STREET

STREET

STREET

STREET

STREET

STREET

STREET

STREET

STREET

STREET

STREET

STREET

STREET

STREET

STREET

STREET

STREET

STREET

STREET

STREET

STREET

STREET

STREET

STREET

STREET

STREET

STREET

STREET

STREET

STREET

STREET

STREET

STREET

STREET

STREET

STREET

STREET

STREET

STREET

STREET

STREET

STREET

STREET

STREET

STREET

STREET

STREET

STREET

STREET

STREET

STREET

STREET

STREET

STREET

STREET

STREET

STREET

STREET

STREET

STREET

STREET

STREET

STREET

STREET

STREET

STREET

STREET

STREET

STREET

STREET

STREET

STREET

STREET

STREET

STREET

STREET

STREET

STREET

STREET

STREET

STREET

STREET

STREET

STREET

STREET

STREET

STREET

STREET

STREET

STREET

STREET

STREET

STREET

STREET

STREET

STREET

STREET

STREET

STREET

STREET

STREET

STREET

STREET

ARLINGTON AVENUE

AVENUE

AVENUE

AVENUE

CALIFORNIA AVE.

See Sheet No 174

See Sheet No 172

173

711-B

464-77

See Sheet No 152

See Sheet No 174

See Sheet No 172

136.02

136.02

136.02

136.02

136.02

136.02

136.02

136.02

136.02

136.02

136.02

136.02

136.02

136.02

136.02

136.02

136.02

136.02

136.02

136.02

136.02

136.02

136.02

136.02

136.02

136.02

136.02

136.02

136.02

136.02

136.02

136.02

136.02

136.02

136.02

136.02

136.02

136.02

136.02

136.02

136.02

136.02

136.02

136.02

136.02

136.02

136.02

136.02

136.02

136.02

136.02

136.02

136.02

136.02

136.02

136.02

136.02

136.02

136.02

136.02

136.02

136.02

136.02

136.02

136.02

136.02

136.02

136.02

136.02

136.02

136.02

136.02

136.02

136.02

136.02

136.02

136.02

136.02

136.02

136.02

136.02

136.02

136.02

136.02

136.02

136.02

136.02

136.02

136.02

136.02

136.02

136.02

136.02

136.02

136.02

136.02

136.02

136.02

136.02

136.02

136.02

136.02

136.02

136.02

136.02

136.02

136.02

136.02

136.02

136.02

136.02

136.02

136.02

136.02

136.02

136.02

136.02

136.02

136.02

136.02

136.02

136.02

136.02

136.02

136.02

136.02

136.02

136.02

136.02

136.02

136.02

136.02

136.02

136.02

136.02

136.02

136.02

136.02

136.02

136.02

136.02

136.02

136.02

136.02

136.02

136.02

136.02

136.02

136.02

136.02

136.02

136.02

136.02

136.02

136.02

136.02

136.02

136.02

136.02

136.02

136.02

136.02

136.02

136.02

136.02

136.02

SHEET 5 OF 5

Scale ~ 1" = 100'

See Sheet No 153

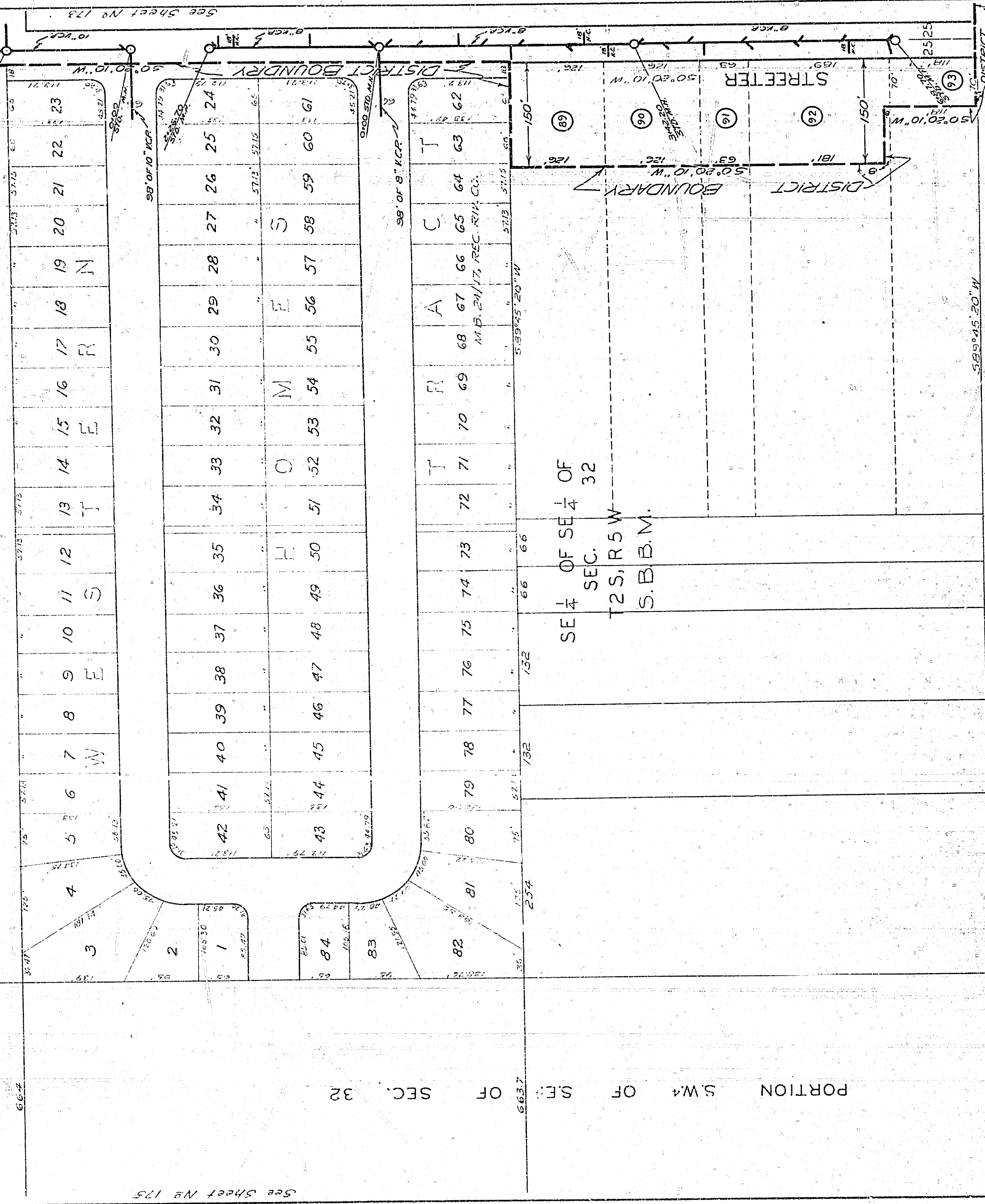
POR. NW 1/4 OF SE 4 OF SEC. 32

PORTION N.E. 1/4 OF S.E. 1/4 OF SEC. 32

SECTION 32
SECTION 33

DISTRICT BDRY.

AVE.



See Sheet No 175

ARLINGTON

TOWNSHIP LINE

T3S AVENUE

DISTRICT BDRY.

See Sheet No 190

174

711-B

11

82

82

11

11