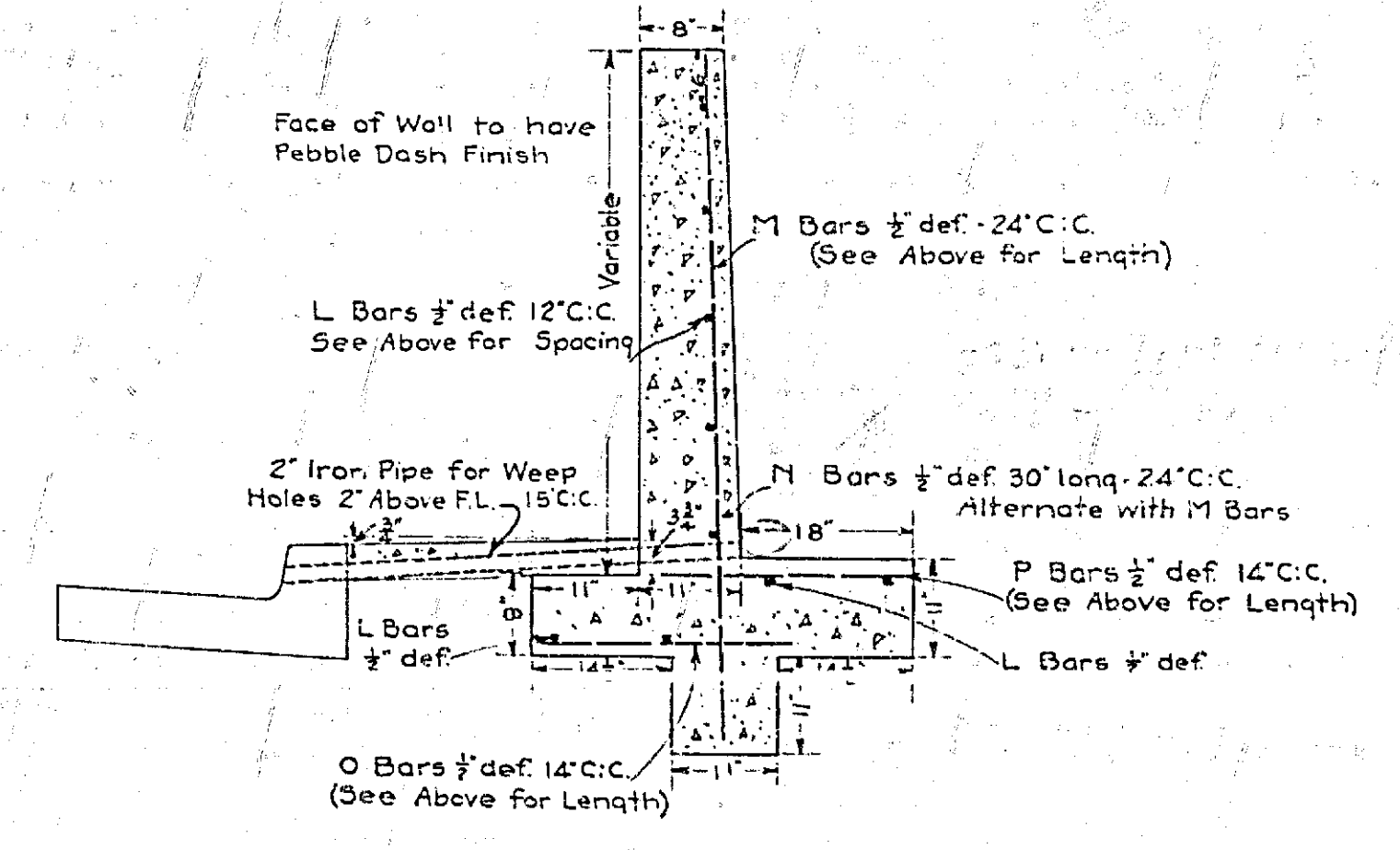
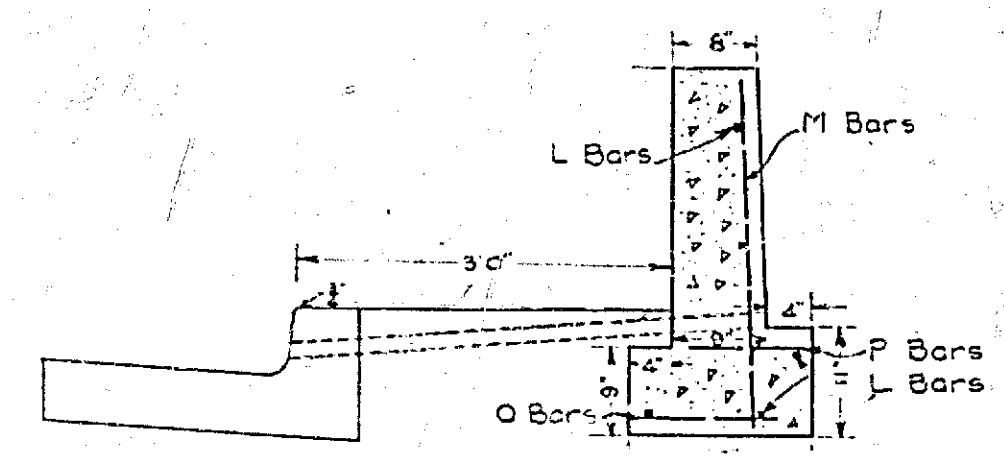


VERTICAL SECTION SHOWING STEEL
SCALE 1" = 6"



CROSS SECTION OF WALL AT WEST END
SCALE - 3/4" = 1"



CROSS SECTION OF WALL AT EAST END
SCALE - 3/4" = 1"

PLAN OF CONCRETE RETAINING WALL
ON NORTH SIDE OF FOURTEENTH ST.
BETWEEN ALMOND ST. AND WALNUT
ST. ALONG A PORTION OF THE SOUTH-
ERLY SIDE OF GRANT SCHOOL.

ENG. DEPT.

FEB. 1938

APPROVED *[Signature]*
CITY ENGINEER

715-B