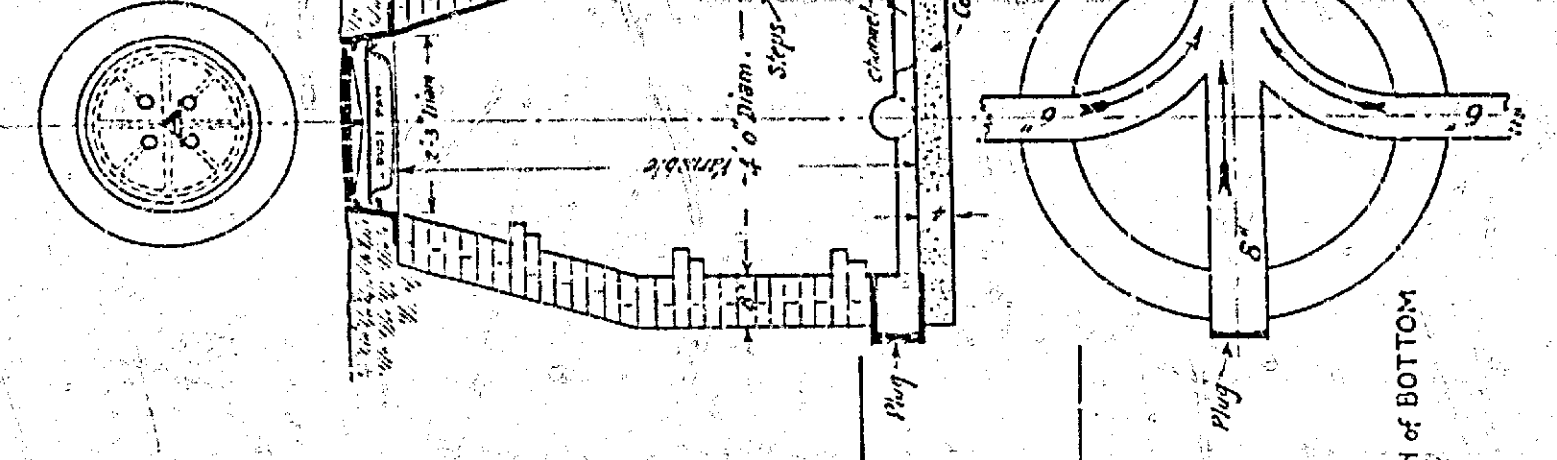
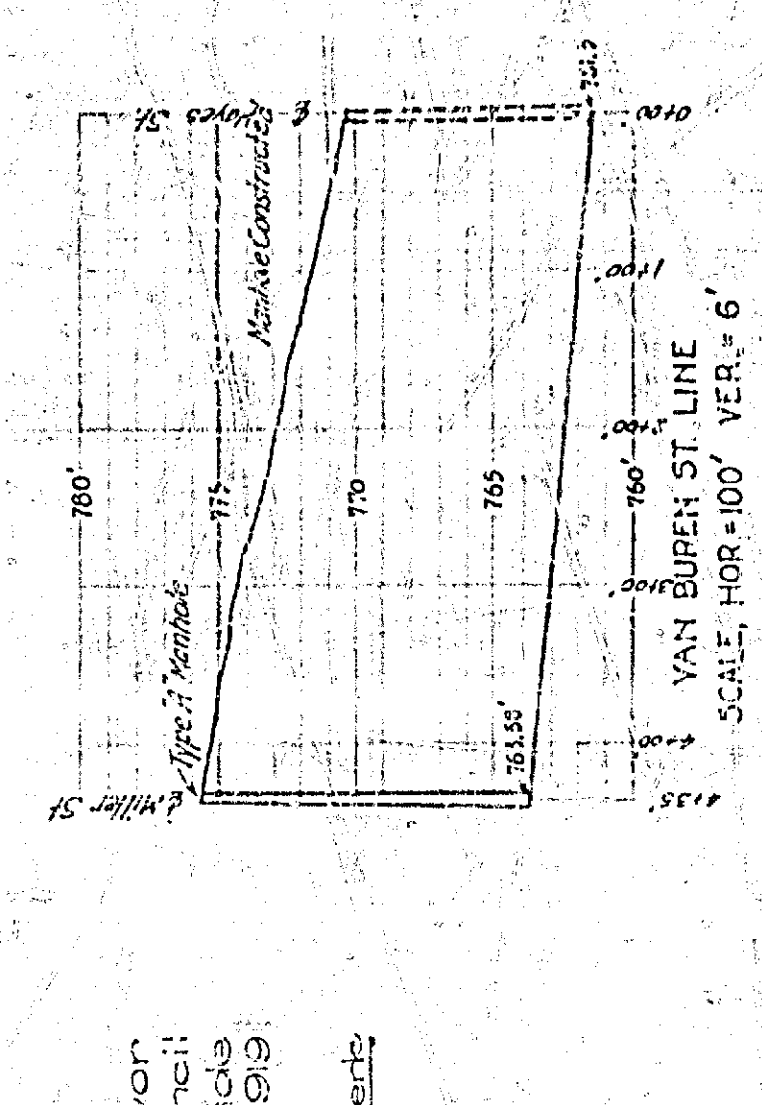
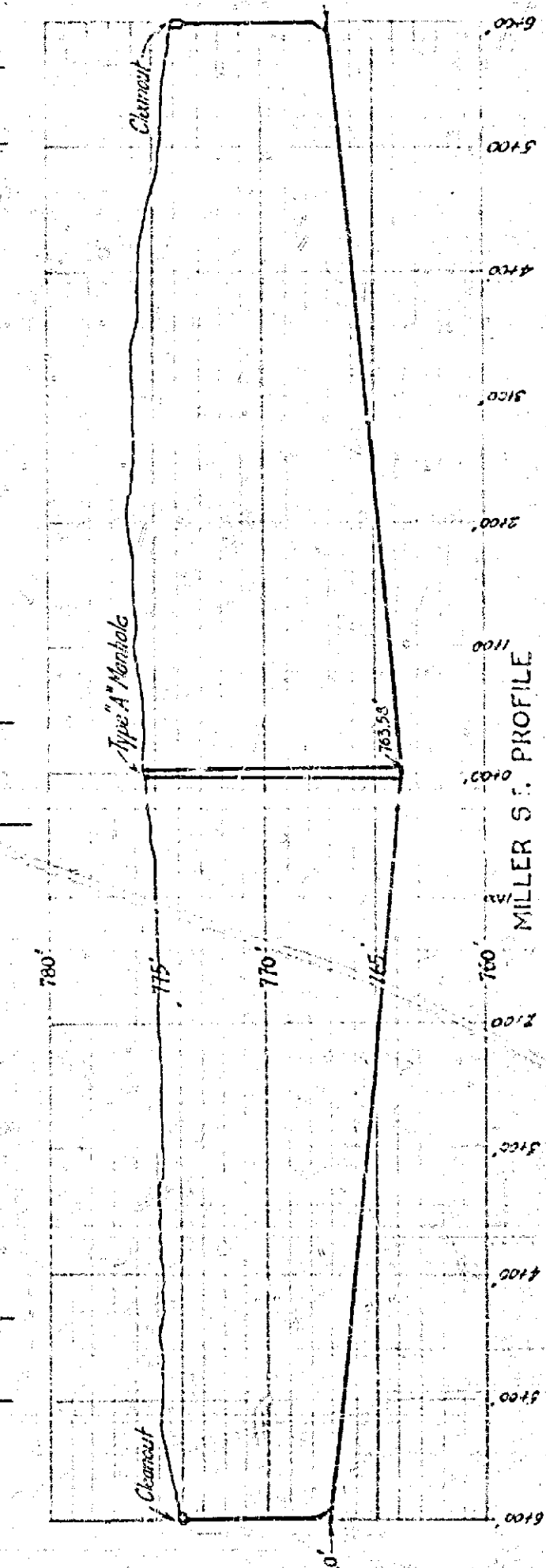
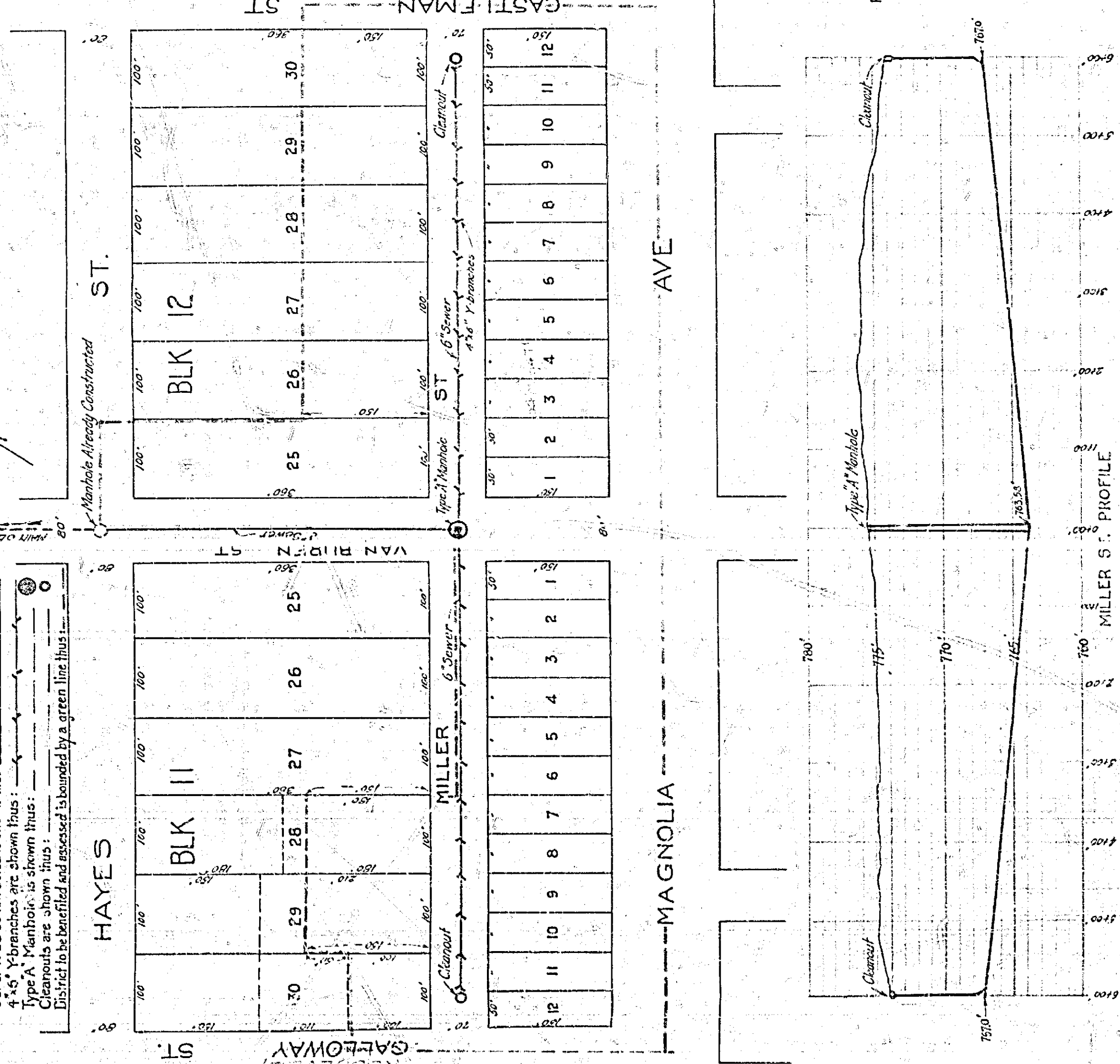


MAP SHOWING SEWER TO BE CONSTRUCTED IN  
ARLINGTON

MILLER ST.  
A. BRAUNSCHWEIGER, CITY ENGINEER.

Adopted by the Mayor and Common Council of the City of Riverside this 10th day of May, 1918.  
Attest: *[Signature]* City Clerk

EXPLANATORY NOTES.  
Sewer to be constructed is shown thus: ———  
4" x 6" Y-branches are shown thus: ———  
Type A Manhole is shown thus: —○—  
Cleanouts are shown thus: —○—  
Disturbed to be identified and assessed is denoted by a green line thus: ———

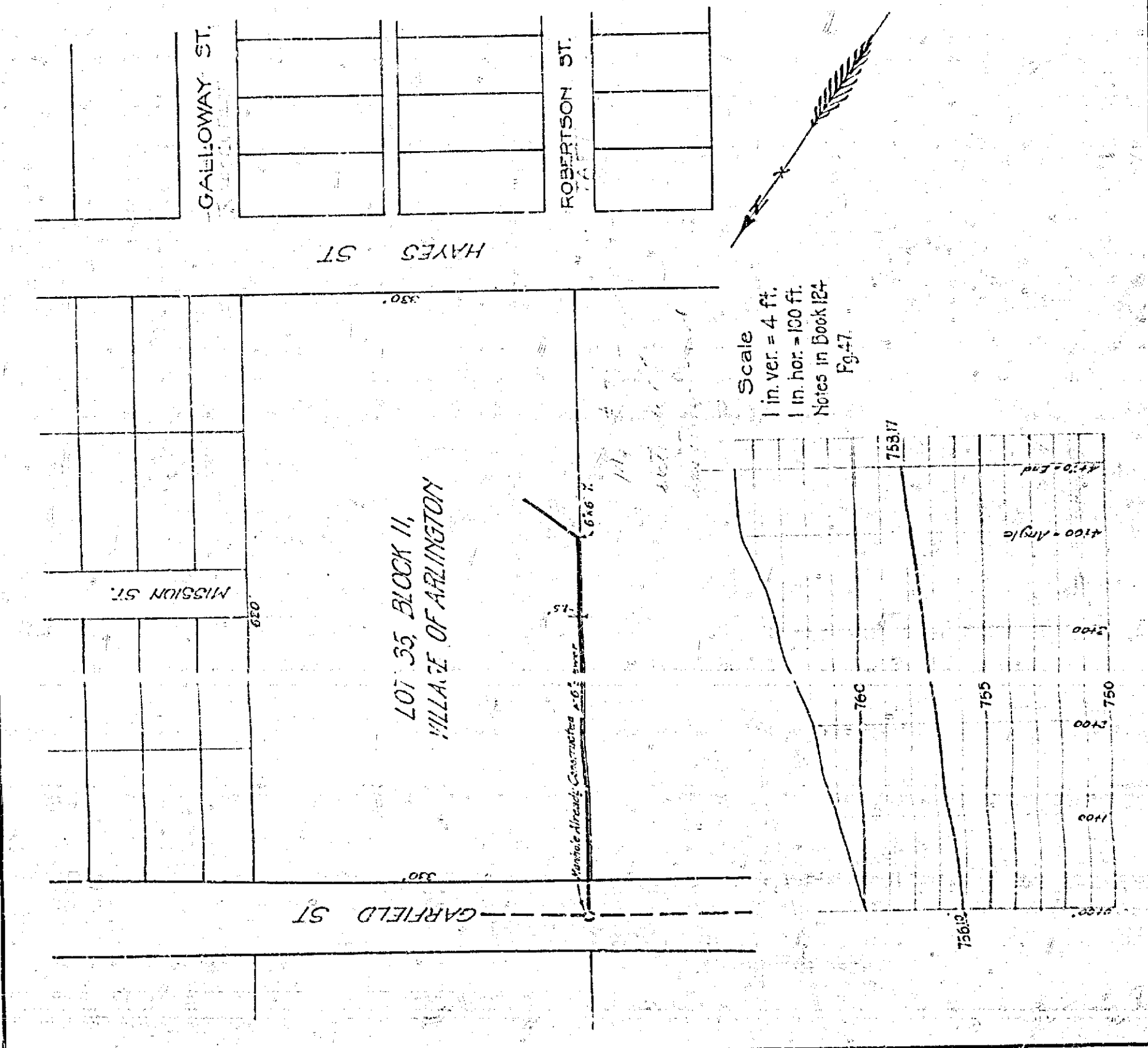


718-B

MAP SHOWING SEWER TO BE CONSTRUCTED IN  
LOT 35, BLK. II, VILLAGE OF ARLINGTON.

A. BRAUNSCHWEIGER, CITY ENGINEER.

Adopted by the Mayor and Common Council of the City of Riverside this 21st day of Oct., 1918.  
Attest: *[Signature]* City Clerk



Scale  
1 in. ver. = 4 ft.  
1 in. hor. = 100 ft.  
Notes in Booklet  
Pg. 47.

718-C  
MAP NO. 754-A