

PLAN No. 718-B
 SHOWING PROPOSED REPLACEMENT SEWER ON
 JACKSON STREET
 SOUTH OF CALIFORNIA AVE.
 RIVERSIDE, CALIFORNIA
 Feb. 1955
 Scale: 1" = 50 FT.
 Ver. 1" = 3 FT.

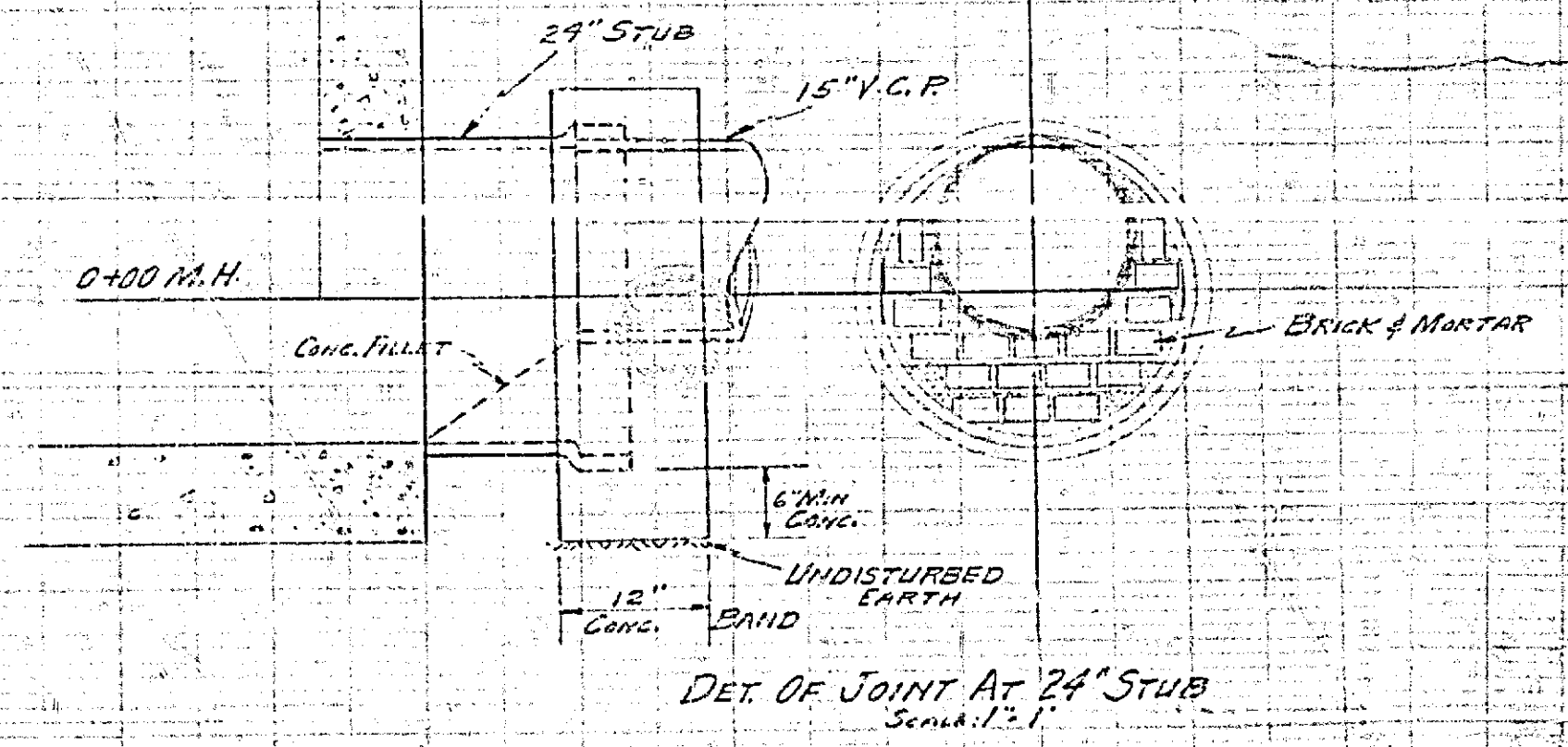
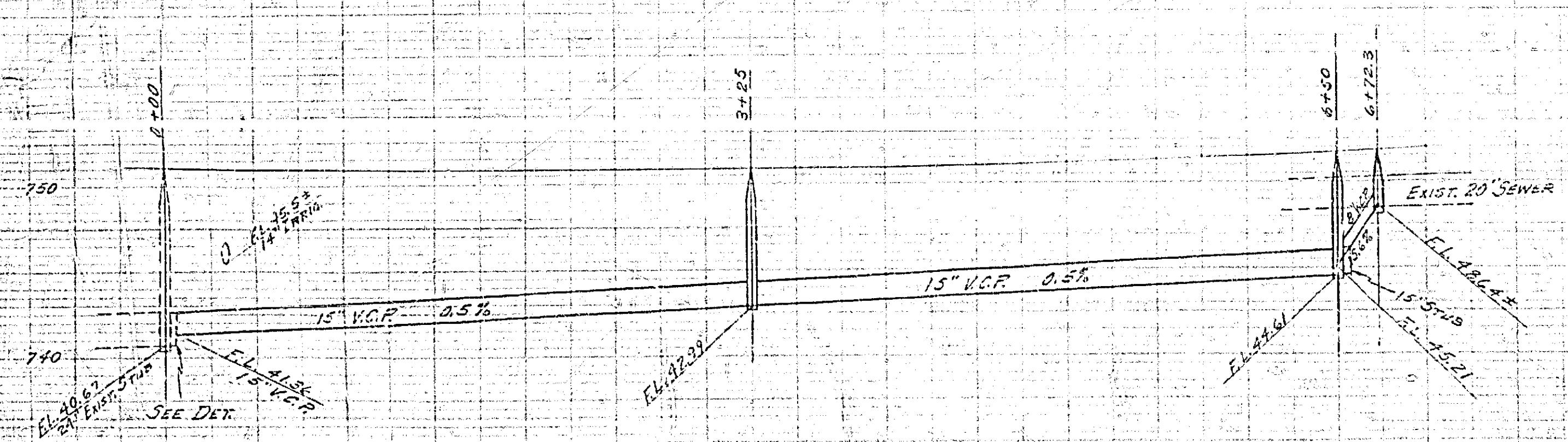
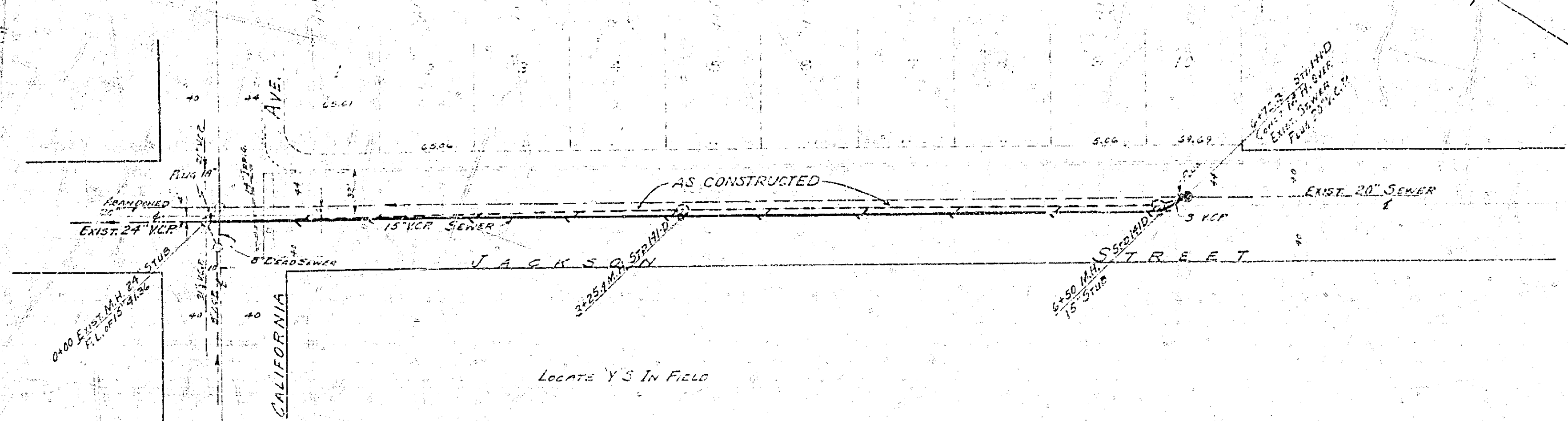
APPROVED: *M.H. Swine*
 M.H. Swine - Reg. C.E. No. 3011
 City Engineer

35

11

11

82



718-B

88

11

8.5"

11"

17"

22"

35