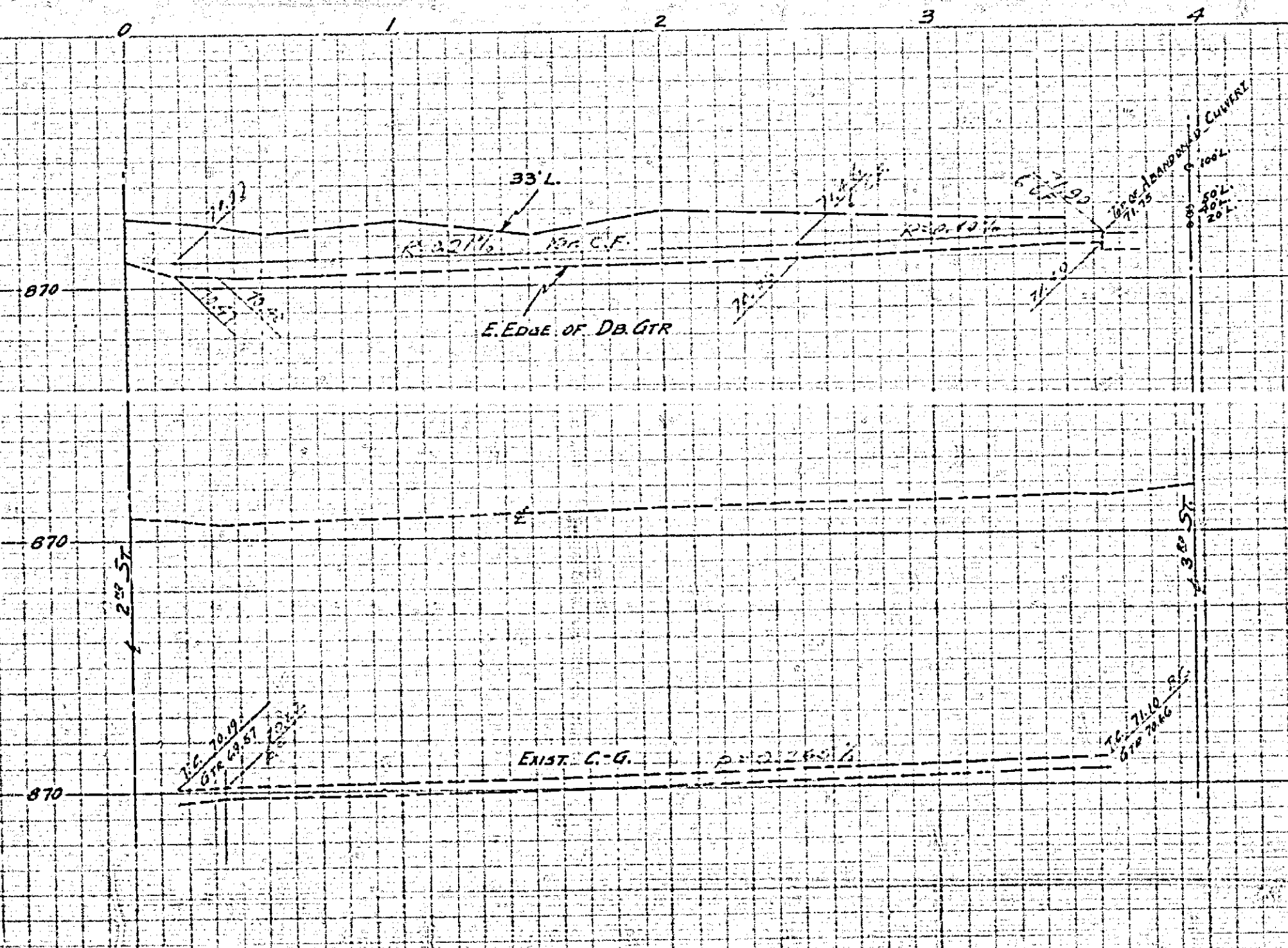
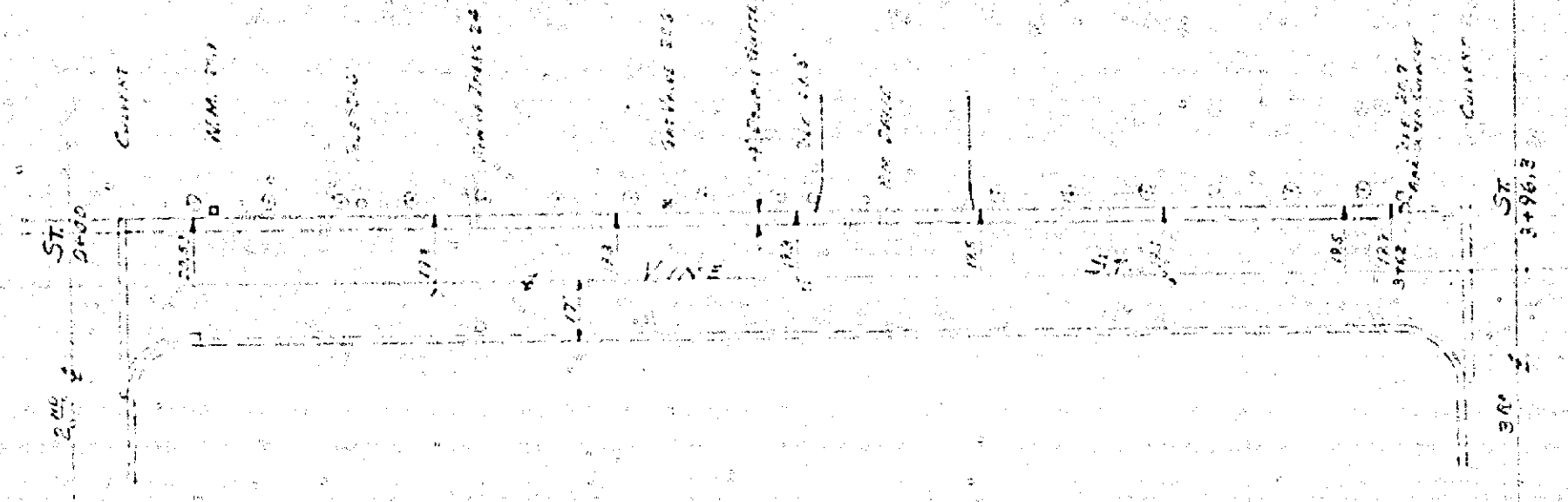
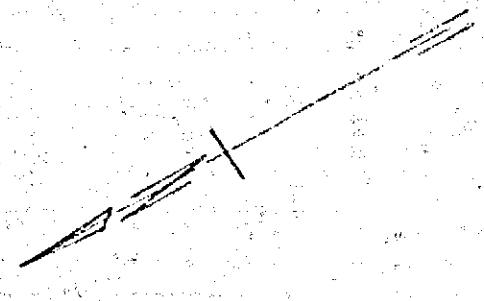


PLAN No. 719-B
 PLAN & PROFILE FOR
 VINE STREET
 BET. 2ND ST. & 3RD ST.
 RIVERSIDE, CALIFORNIA

SCALE: HOR: 1" = 40'
 VER: 1" = 4'
 JUNE 1955

APPROVED: M.H. IRVING - REG. C.E. No. 3011
 CITY ENGINEER



271.54 L. - V. 1016 V. 1016
 2' IN. 1016 201 ST.
 E. 870.65

FB 574-22

719-B

MADE IN U.S.A.
 CLEVELAND, OHIO
 CLEVELAND PAPER CO.

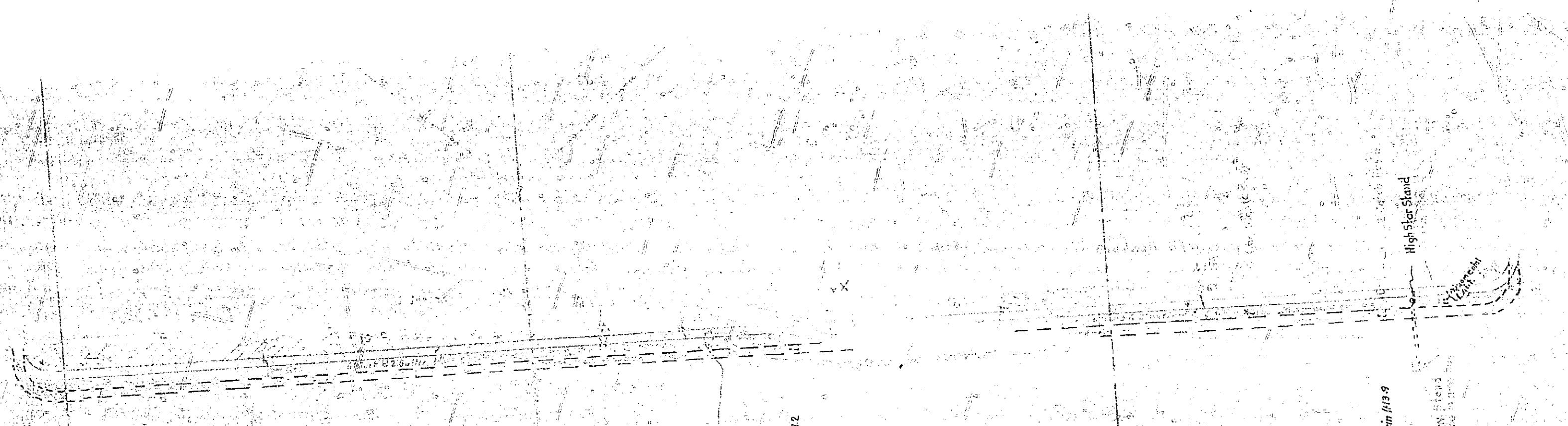
MADE IN U.S.A.
 CLEVELAND, OHIO
 CLEVELAND PAPER CO.

MADE IN U.S.A.
 CLEVELAND, OHIO
 CLEVELAND PAPER CO.

719-B

719-B

11/10/21
11/10/21
11/10/21
11/10/21



15' 1" Club Barn
15' 1" Club Barn

High Rise Stand

15' 1" Club Barn

15' 1" Club Barn

15' 1" Club Barn

15' 1" Club Barn

15' 1" Club Barn

15' 1" Club Barn

15' 1" Club Barn

15' 1" Club Barn

LEGEND:
Dash indicates proposed work to be performed by other authority
Solid line indicates existing track
Dotted line indicates proposed track
Block indicates proposed track

UNION PACIFIC SYSTEM
 A. S. L. R. R.
 REMESIDE CALIF.
 Installation to VINE ST. between
 11th & 12th Sts.
 11/10/21
 ON BEHALF OF THE U. S. DEPARTMENT OF COMMERCE
 11/10/21

719-B

11/10/21