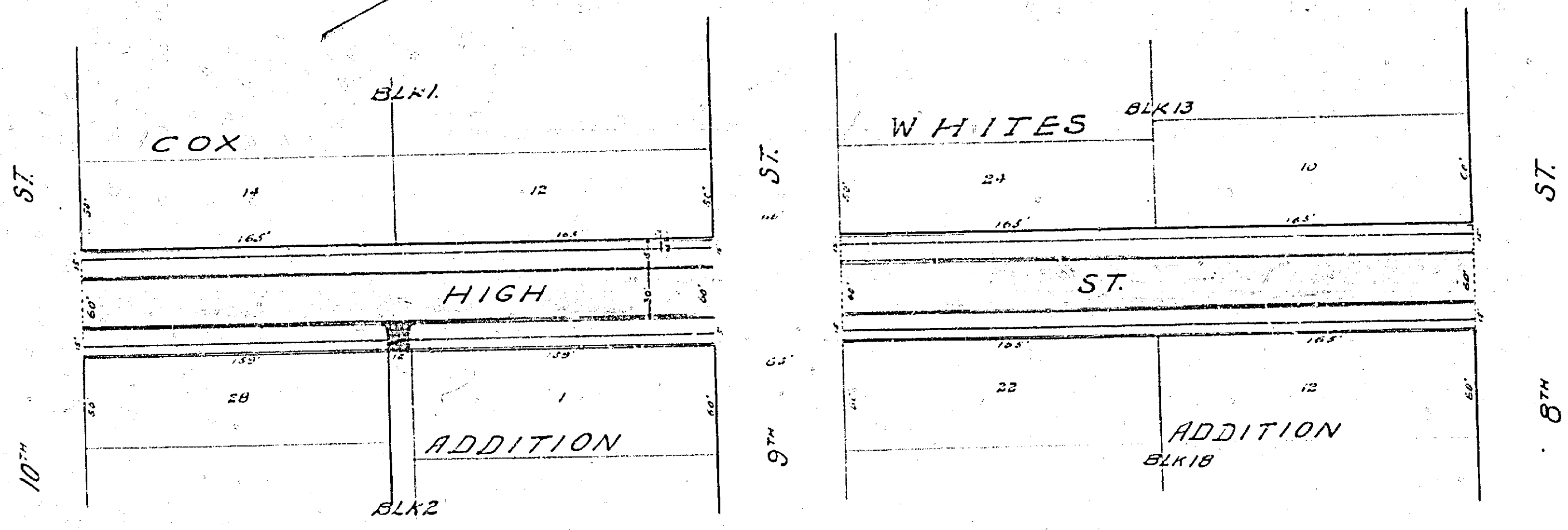
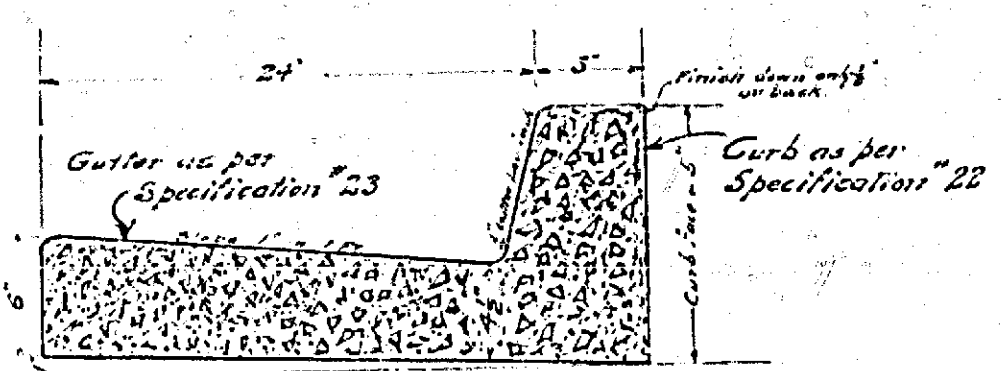
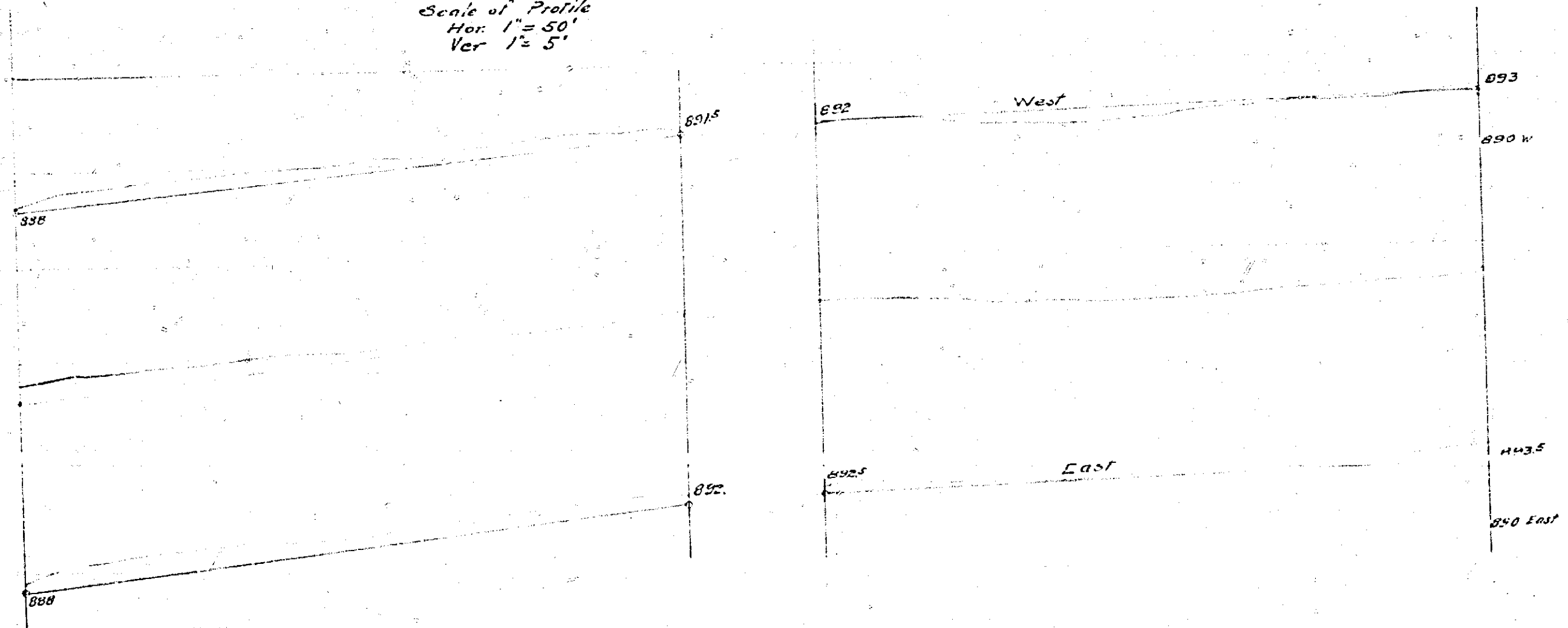


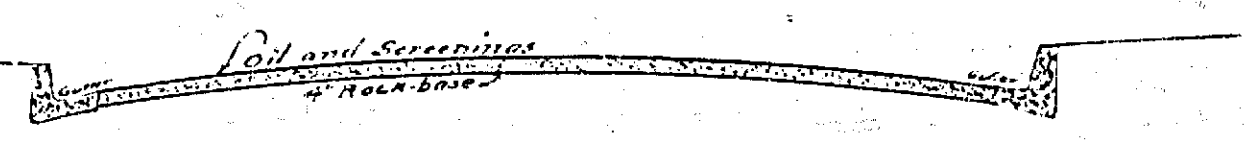
720-C
 MAP OF PROPOSED
 IMPROVEMENT TO BE MADE ON HIGH ST.
 FROM 8TH ST. TO 10TH ST.
 Scale 1"=50' A.P. Campbell
 City Engineer



Scale of Profile
 Hor. 1"=50'
 Ver. 1"=5'



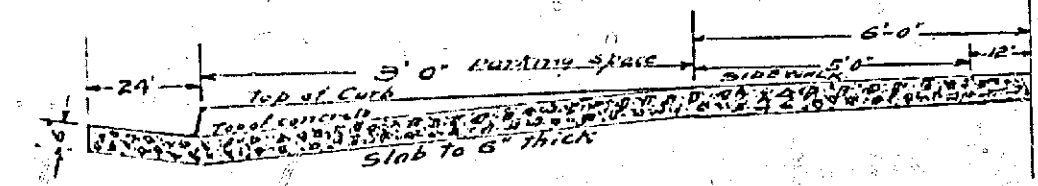
Cross-Section of Combination Curb and Gutter
 Proportion of materials in the concrete shall be:
 1 bag of cement, 2 1/2 cu. ft. of sand and 3 1/2 cu. ft. of rock.



Cross-section of Roadway
 Rock base to be 6 inches thick from gutter to gutter; Rock base to be finished grade (top of center stakes and top of edge of gutter) when completed. Rock shall be from 2 1/2 inch crusher run rock.

Note: Improvements to be made on High Street are shown on this map as follows:

- Rock base roadway to be constructed is shown thus ———
- Combination Curb & Gutter to be
- Alley Entrance to be
- Sidewalk to be



Cross-Section of Alley Entrance
 Proportion of materials in the concrete shall be
 1 part cement, 3 parts sand and 5 parts broken rock
 with float finish except the curb.

Approved by the Mayor and Common Council
 of the City of Riverside 1912

Attest
 City Clerk.

720-C