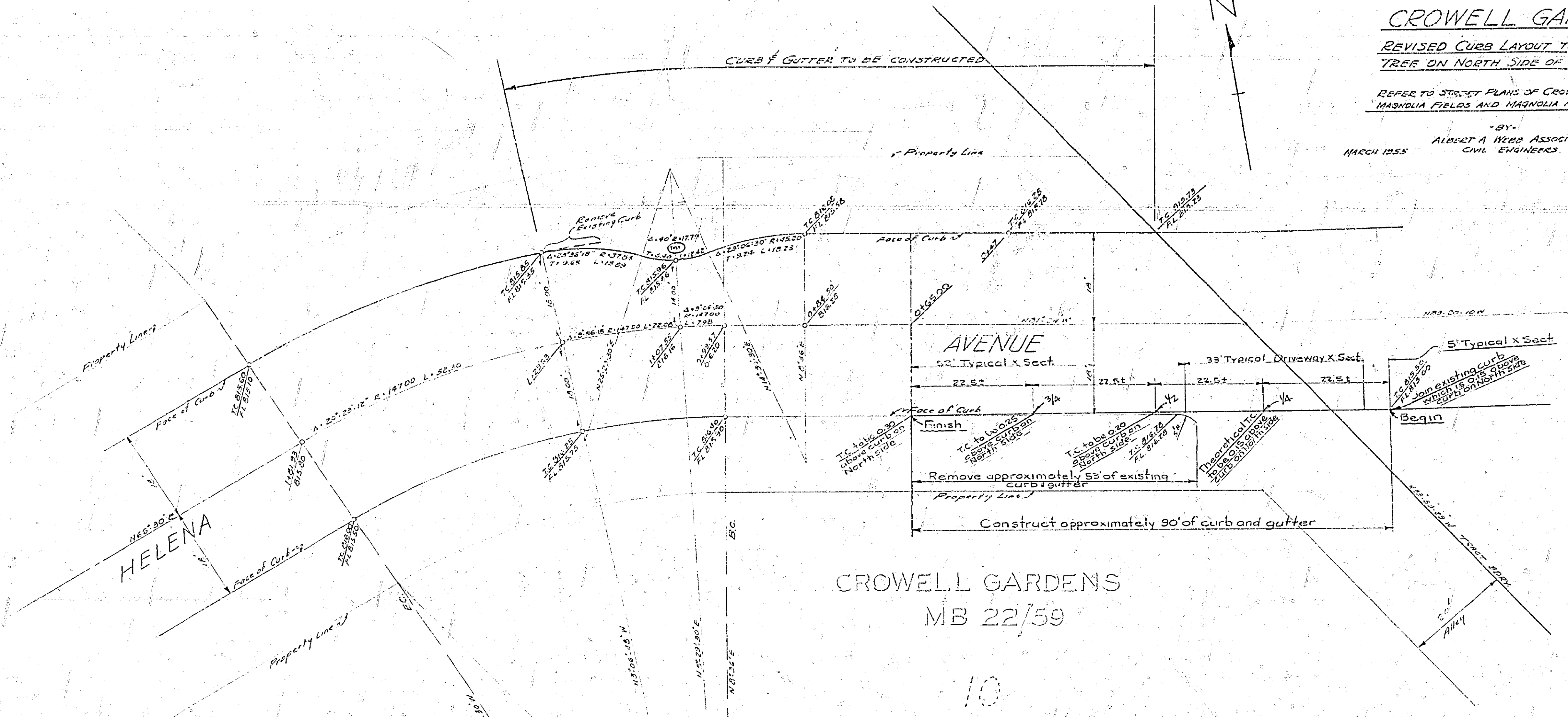


CROWELL GARDENS
REVISED CURB LAYOUT TO BY-PASS OAK TREE ON NORTH SIDE OF HELENA AVE

REFER TO STREET PLANS OF CROWELL GARDENS,
MAGNOLIA FIELDS AND MAGNOLIA FIELDS No. E.
-BY-
ALBERT A. WEBB ASSOCIATES
CIVIL ENGINEERS
MARCH 1955
SCALE: 1" = 10'



CROWELL GARDENS
MB 22/59

10

727-D

55.0
11.0
11.0
8.2
8.8
11.0
11.0
52.0

55.0
11.0
11.0
8.2
8.8
11.0
11.0
52.0