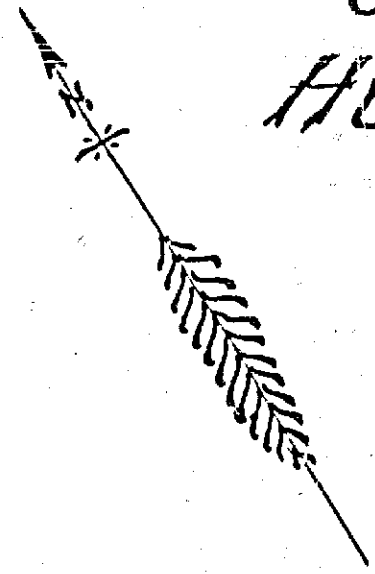


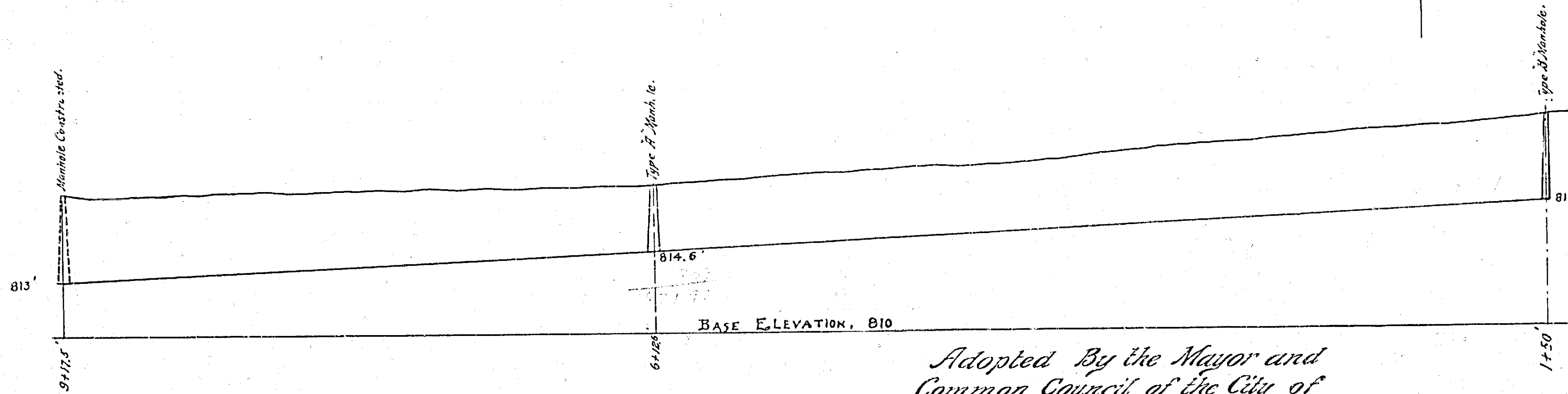
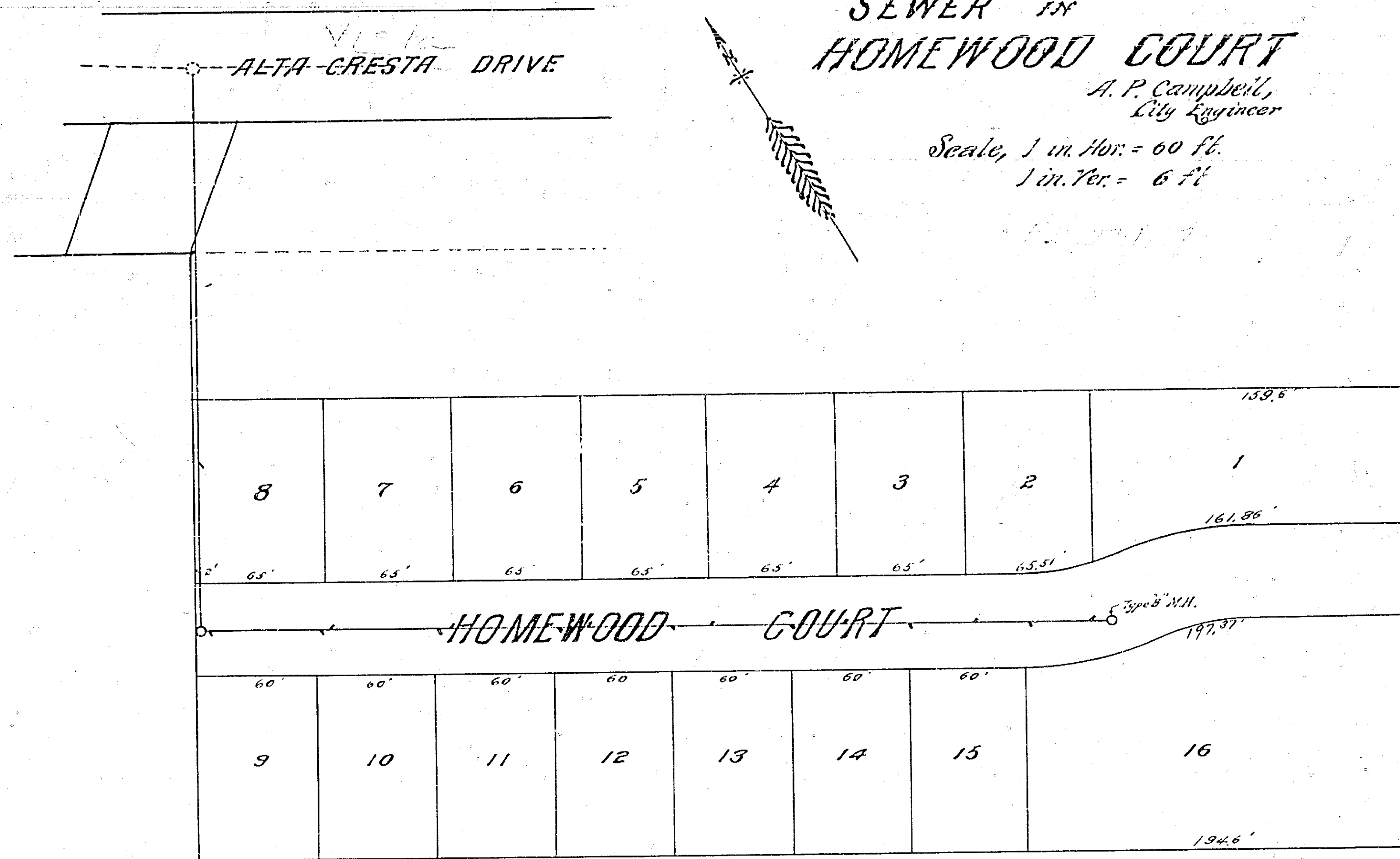
MAP SHOWING PROPOSED
SEWER IN
HOMWOOD COURT

A. P. Campbell,
City Engineer

Scale, 1 in. Hor. = 60 ft.
1 in. Ver. = 6 ft.



ALTA-GRESTA DRIVE



BASE ELEVATION, 810

Adopted By the Mayor and
Common Council of the City of
Riverside August 30, 1910.
Attest *D. L. Jax*
City Clerk.

BROCKTON AVE. 728-A

22"

17"

11"

8.5"

22"

17"

11"

8.5"

8.5"