

# PLANS AND PROFILES

## OF THE PROPOSED IMPROVEMENT OF STATE HIGHWAY ROUTE NO. 43 MAGNOLIA AVENUE

BETWEEN ARLINGTON AVE. AND MADISON ST.

ENG. DEPT. RIVERSIDE CALIF. 1935 CITY (U.S.G.S) DATUM PLANE

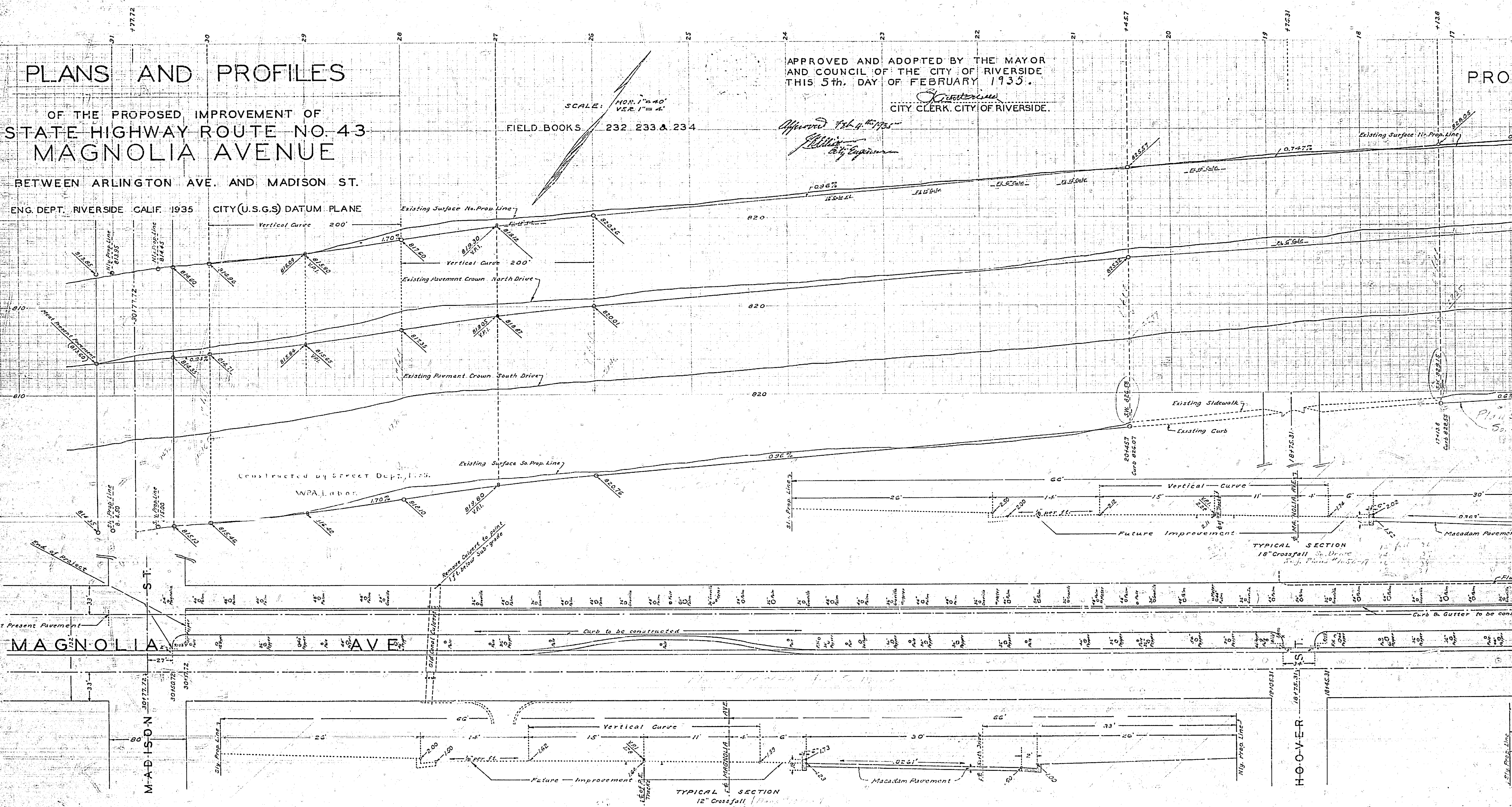
APPROVED AND ADOPTED BY THE MAYOR  
AND COUNCIL OF THE CITY OF RIVERSIDE  
THIS 5th. DAY OF FEBRUARY 1935.

CITY CLERK, CITY OF RIVERSIDE.

SCALE: HOR. 1" = 40'  
VER. 1" = 4'

FIELD BOOKS 232 233 & 234

*Approved Feb. 4, 1935*  
*City Engineer*



TYPICAL SECTION  
18" Crossfall So. Drive  
Plan 1935-7

TYPICAL SECTION  
12" Crossfall  
Plan 1935-7

MAGNOLIA AVENUE

MADISON ST.

HOOVER ST.

PROF

Plan 1935-7

Plan 1935-7

Plan 1935-7

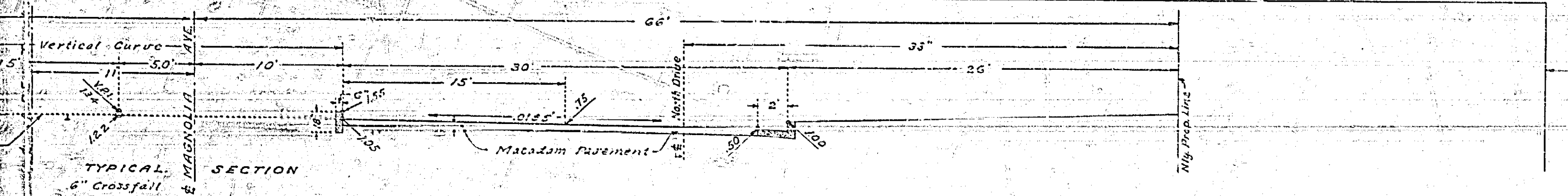
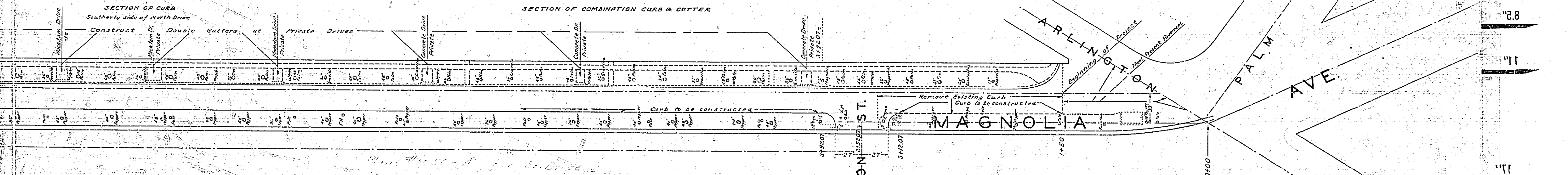
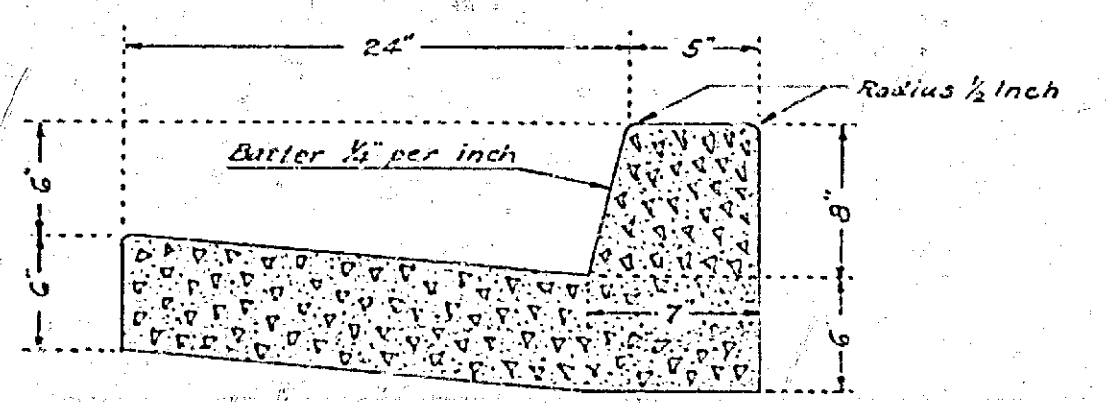
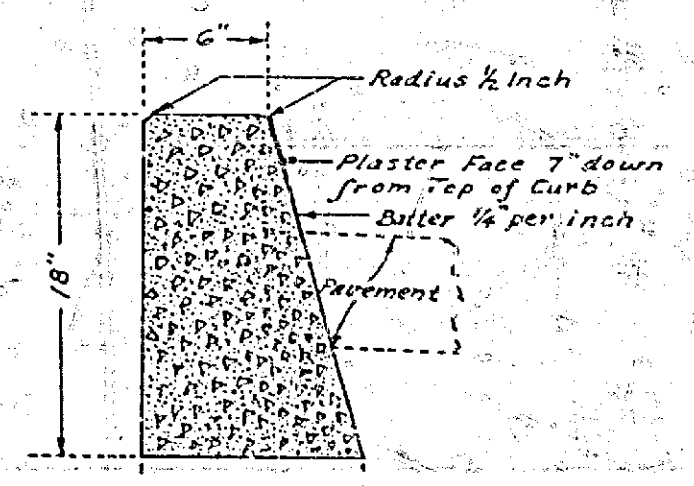
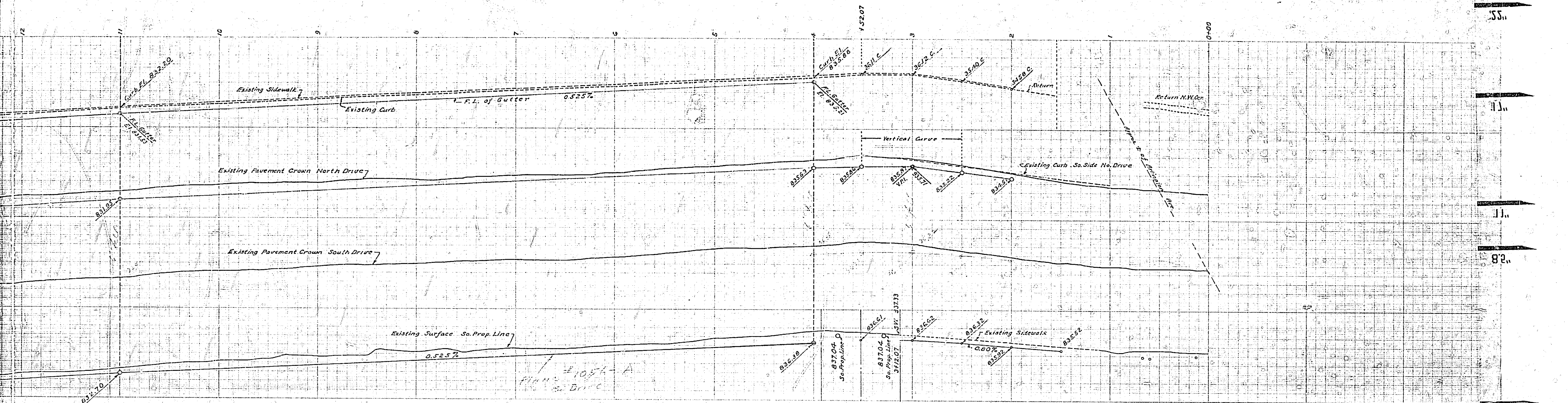
Plan 1935-7

Plan 1935-7

Plan 1935-7

Plan 1935-7





FRAME 10:2

731