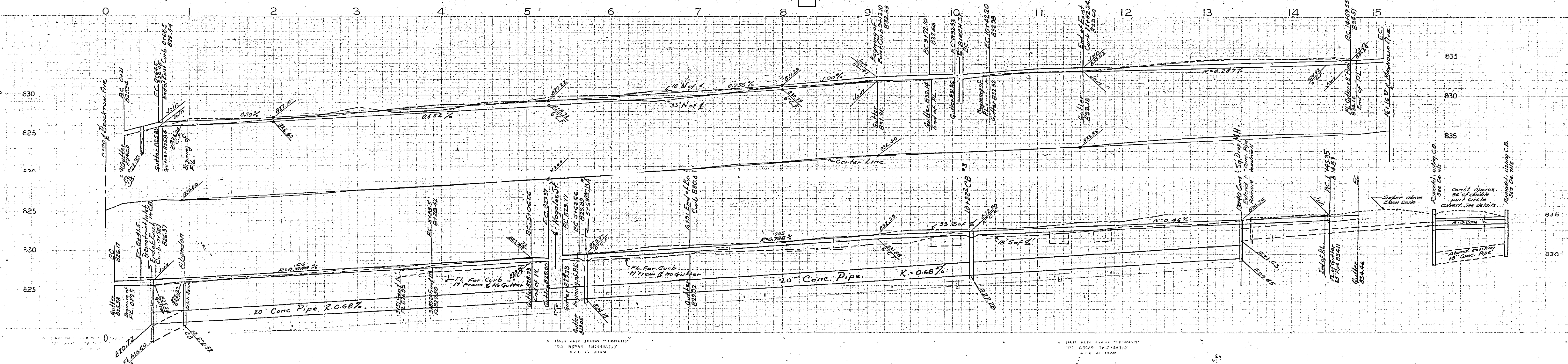


SHEET 1  
PLAN & PROFILE  
NO. 737-A  
FOR THE CONSTRUCTION OF CURBS, GUTTERS  
& STORM DRAIN ON  
JURUPA AVENUE  
BETWEEN BROCKTON AVE. & MAGNOLIA AVE.  
RIVERSIDE CALIFORNIA  
FB 474 PG 13 SCALE HOR. 1" = 40'  
FB 458 PG 67 SCALE VERT. 1" = 4'

APPROVED: \_\_\_\_\_ CITY ENGINEER

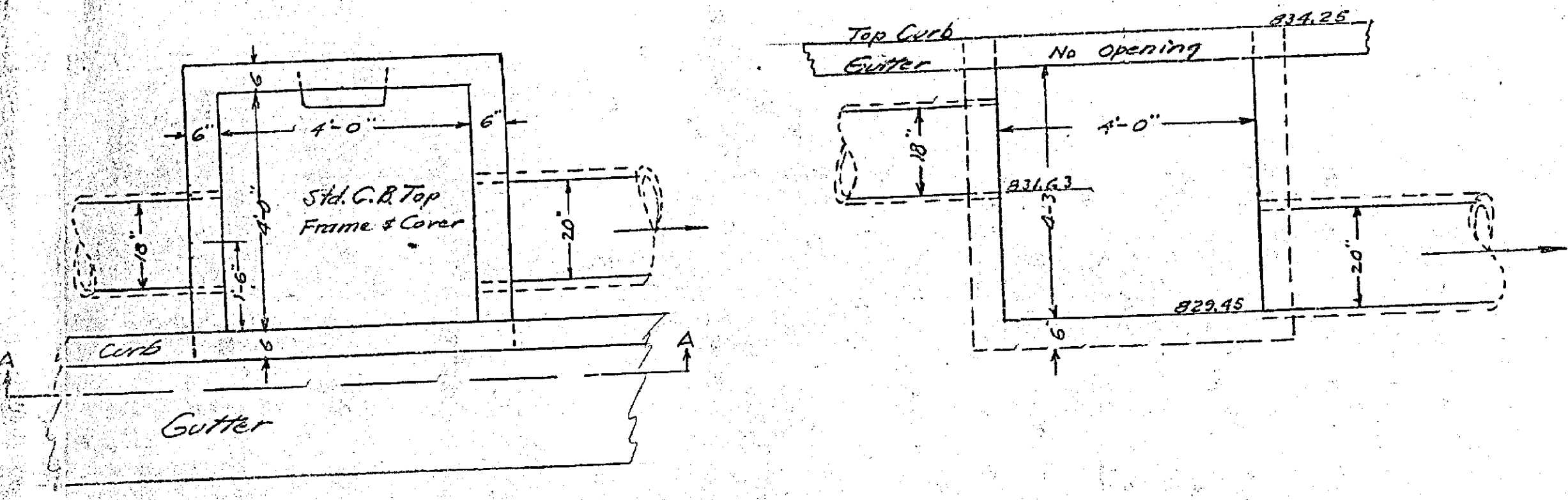
Note: For Storm Drain details see Sheet 2



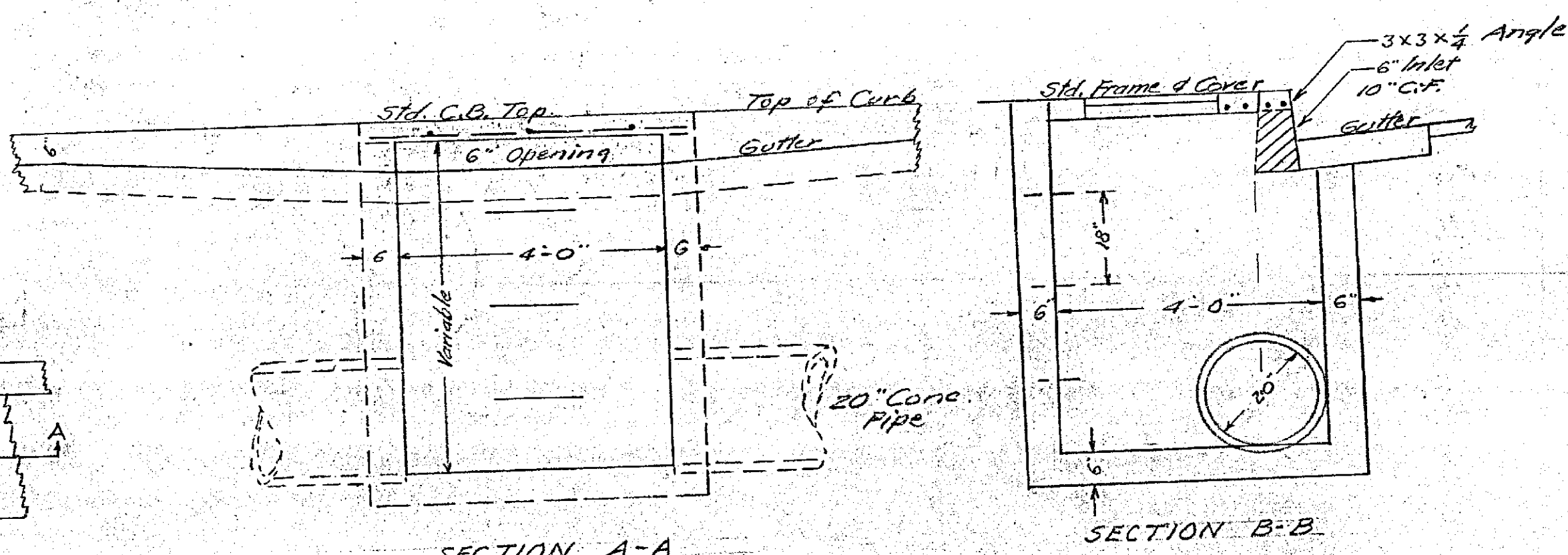
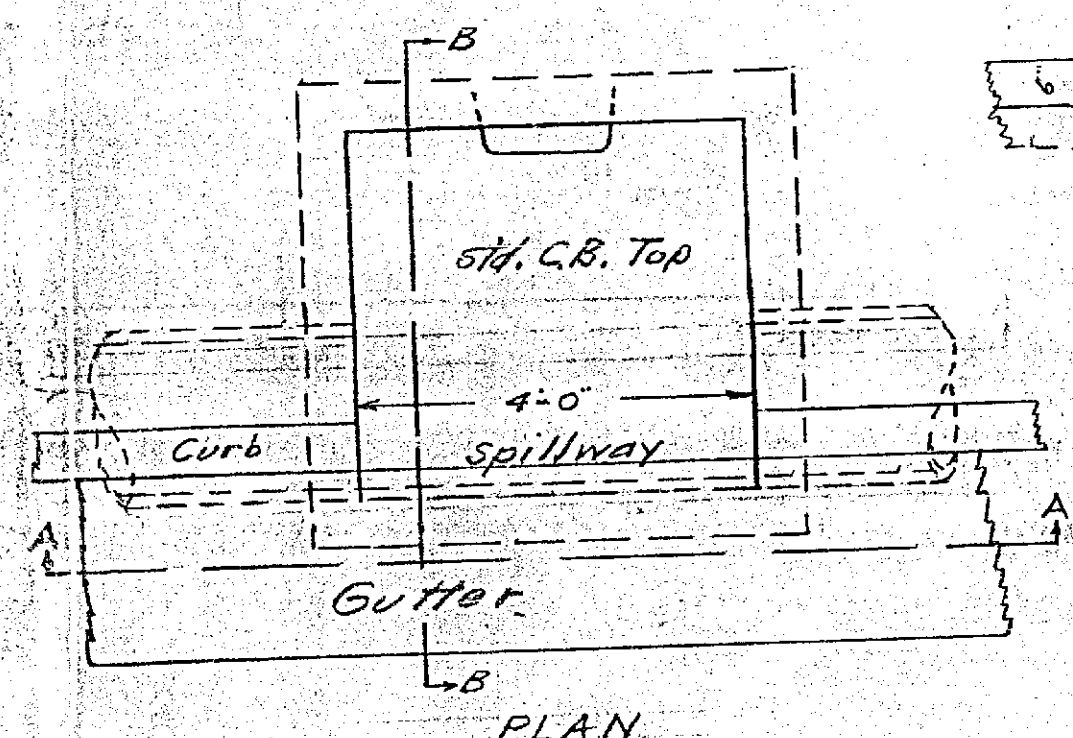
737A

SHEET 2  
 PLAN & PROFILE  
 NO. 737-A  
 FOR THE CONSTRUCTION OF CURBS, GUTTERS  
 & STORM DRAIN ON  
**JURUPA AVENUE**  
 BETWEEN BROCKTON AVE. & MAGNOLIA AVE  
 RIVERSIDE - CALIFORNIA  
 FB.474 PG.13      SCALES AS SHOWN

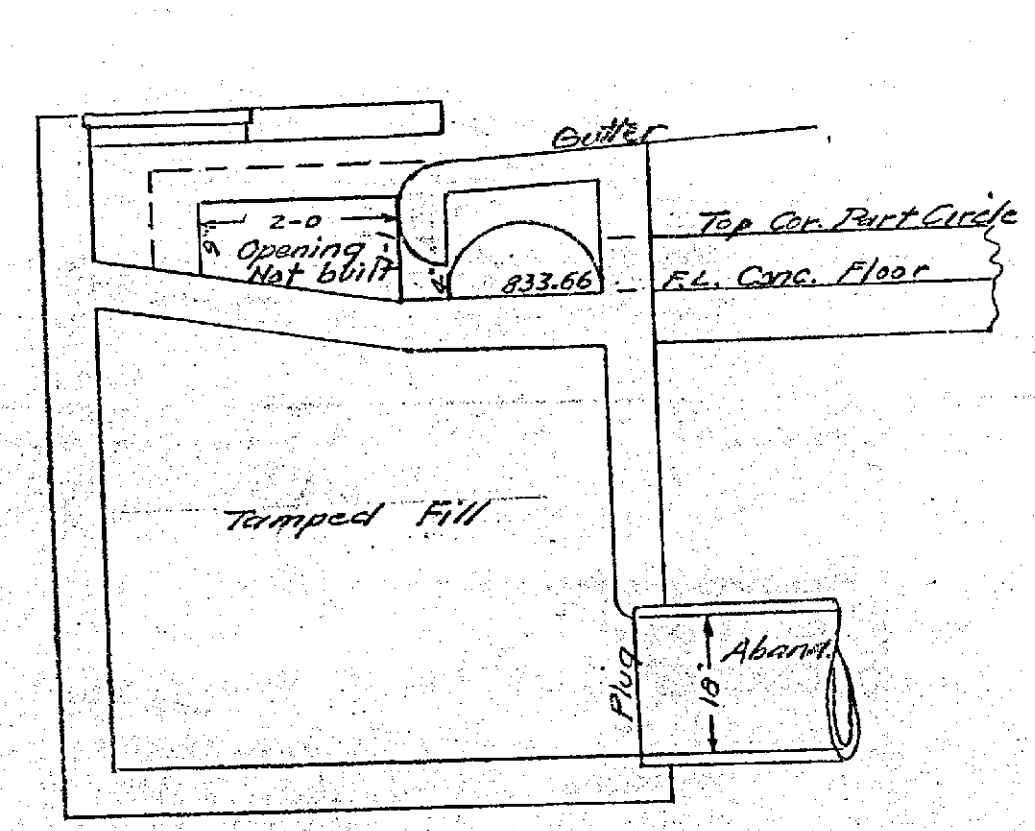
APPROVED \_\_\_\_\_  
 CITY ENGINEER



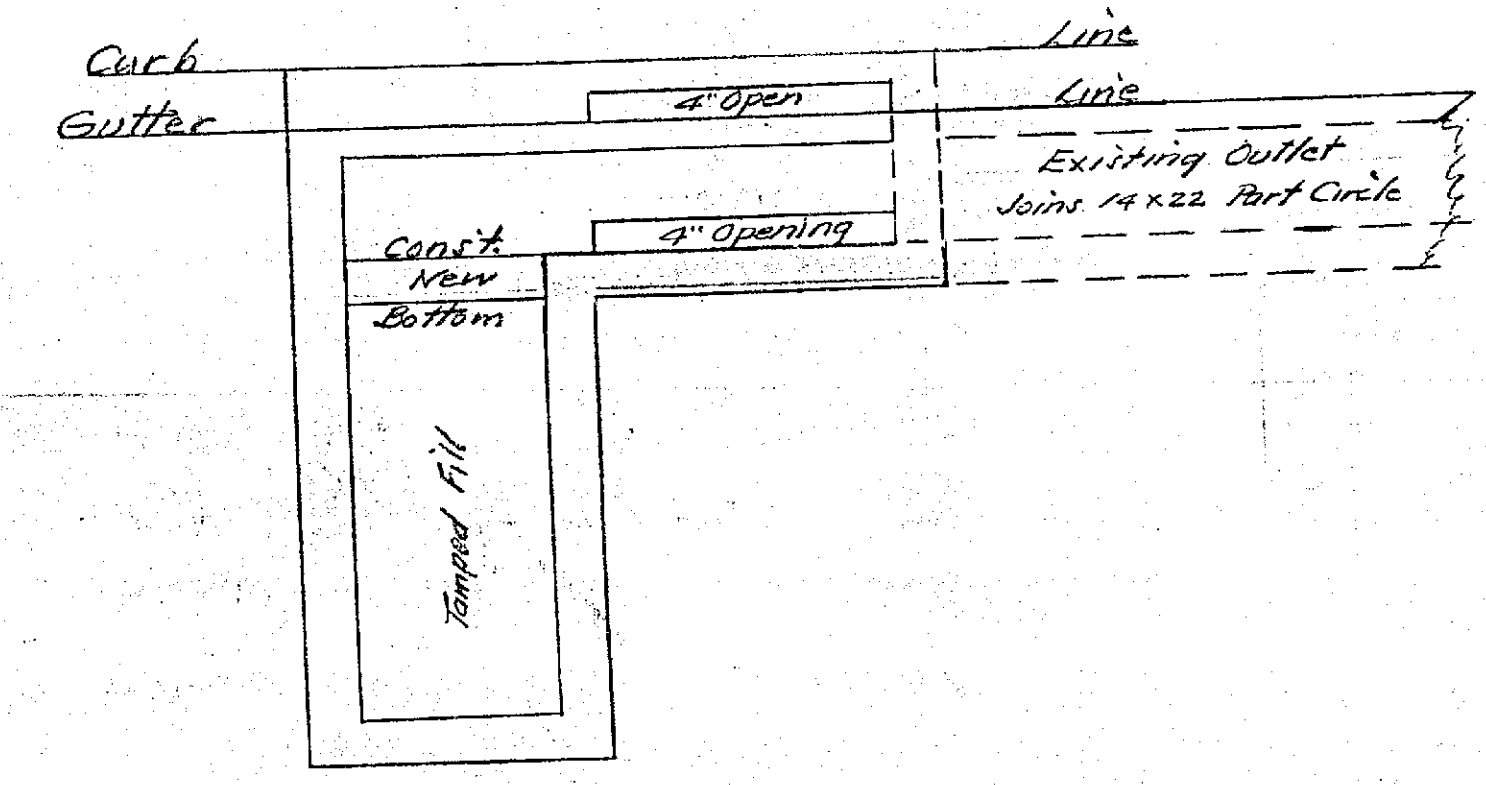
SECTION A-A  
**DETAILS OF DROP MANHOLE**  
 SCALE: 1/4" = 2 FT.



SECTION A-A  
**DETAILS OF CATCH BASINS NO. 3 & 4**  
 SCALE: 1/4" = 2 FT.

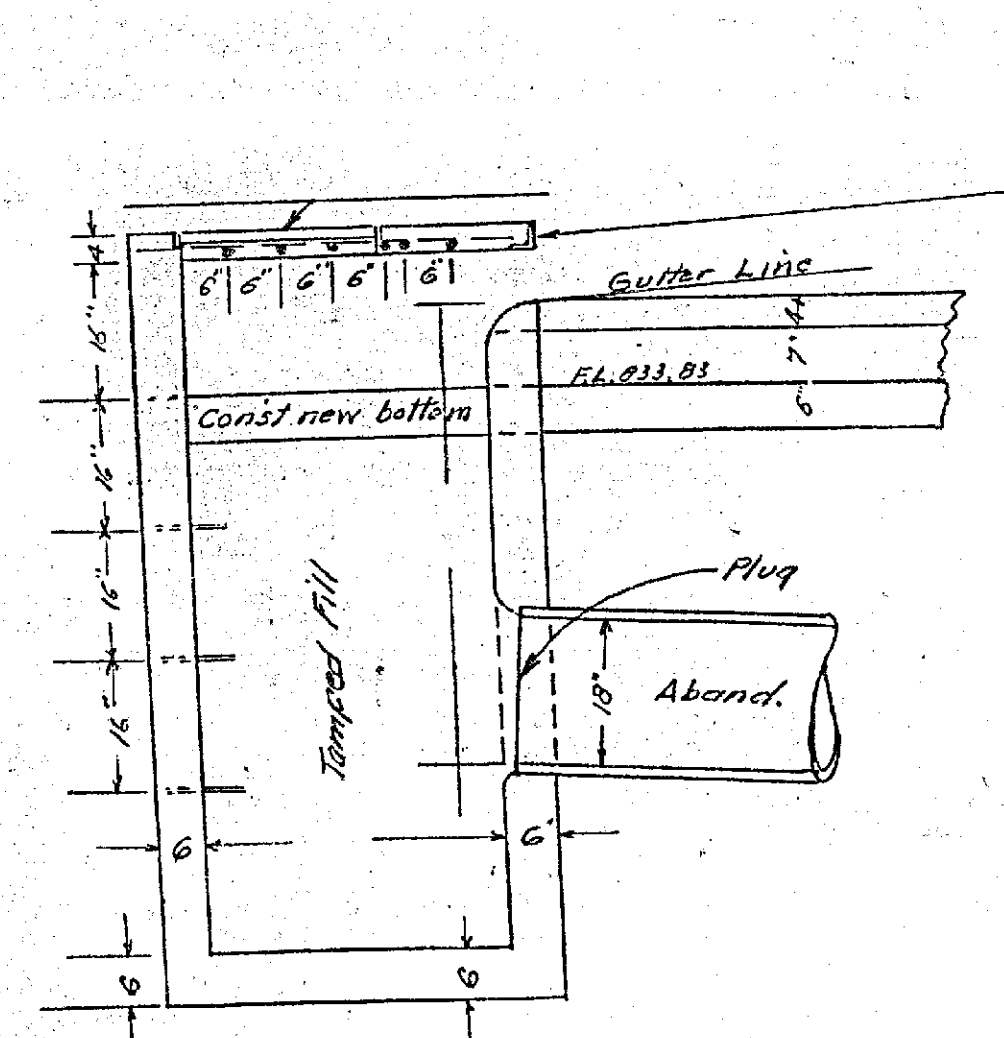


SECTION B-B



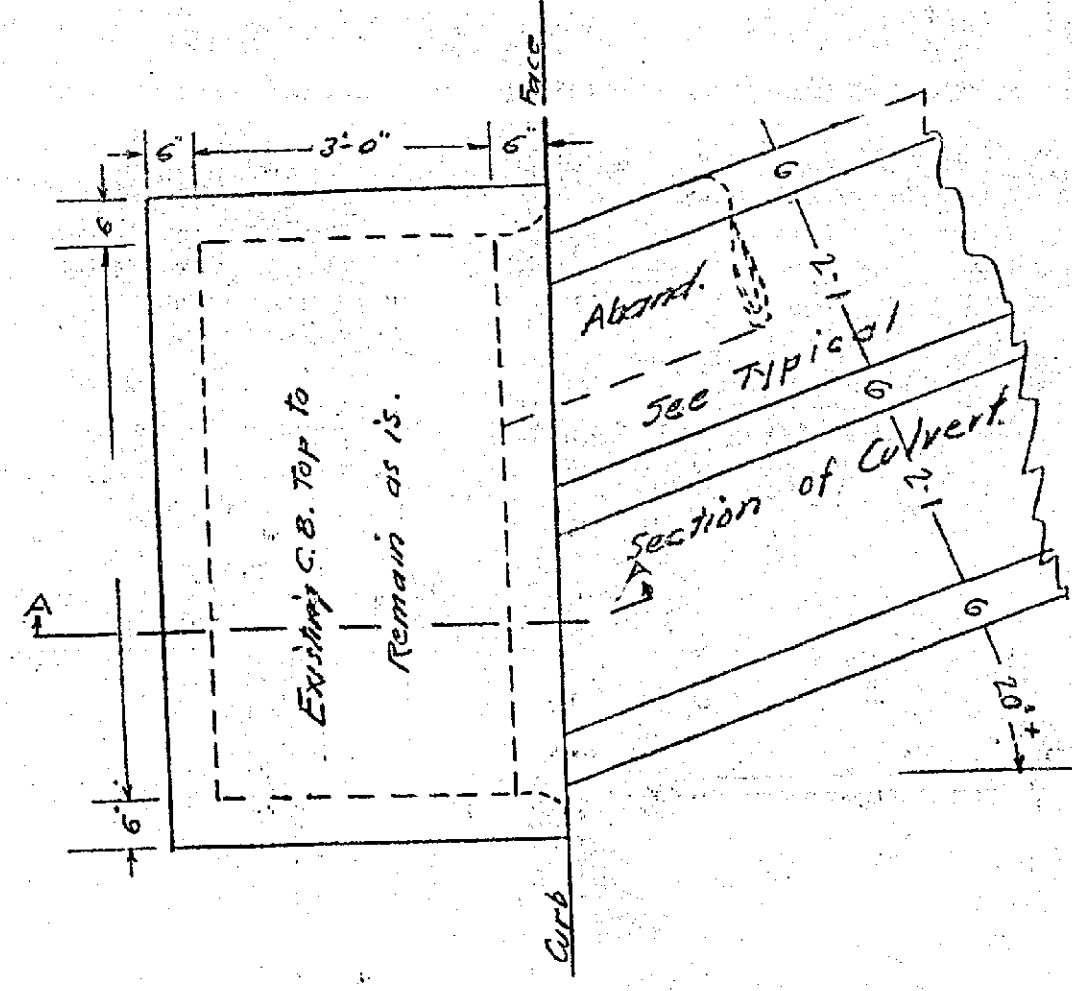
SECTION A-A

**DETAILS - CATCH BASIN NO. 2**  
 SCALE: 1/4" = 2 FT.

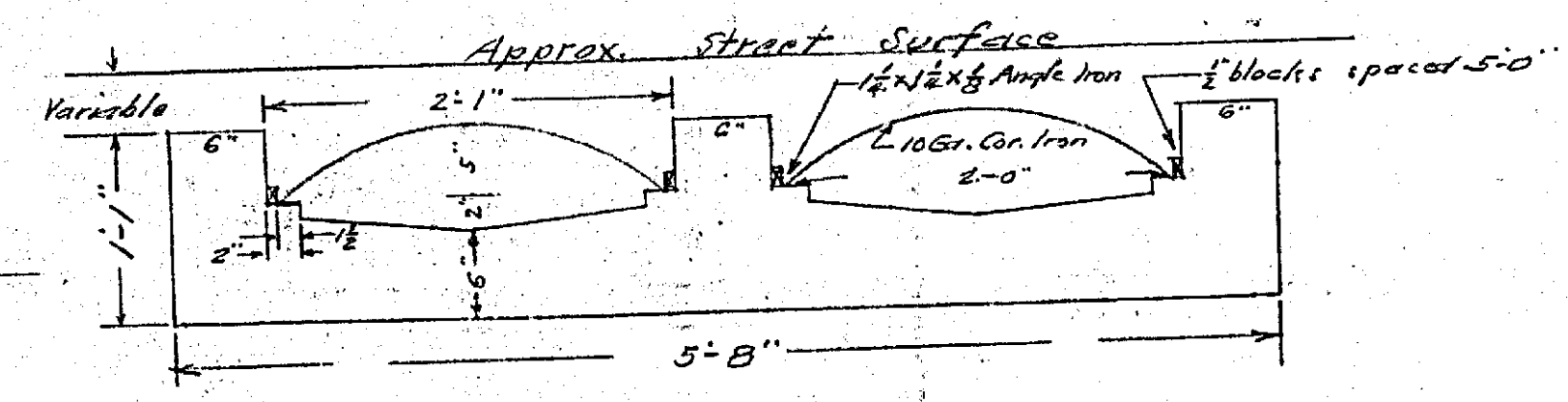


SECTION A-A

**DETAILS - CATCH BASIN NO. 1**  
 SCALE: 1/4" = 2 FT.

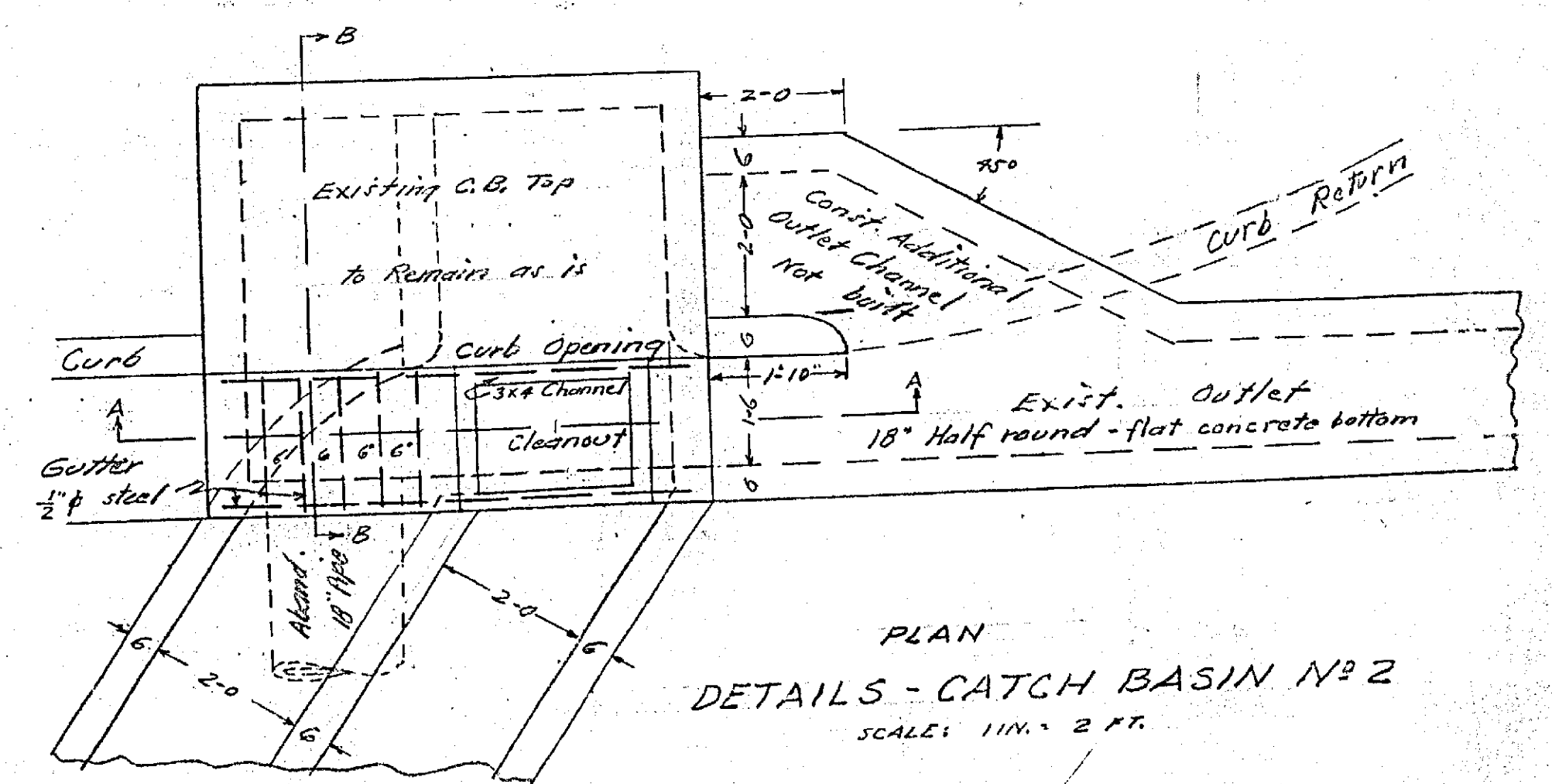


PLAN



TYPICAL SECTION  
**PART CIRCLE CULVERT**  
 SCALE: 1/4" = 1 FT.

Note: Where cover over arch is less than 6"  
 place 3x3 wire mesh in concrete top.



PLAN  
**DETAILS - CATCH BASIN NO. 2**  
 SCALE: 1/4" = 2 FT.